

Before the first use

Warning: Damage resulting from incorrect installation and connection. Installing and connecting the washing machine incorrectly will cause serious damage to property. See "Installation".

Warning: Damage resulting from failure to remove the transit bars. Failure to remove the transit bars can result in damage to the washing machine and to adjacent cabinetry or appliances. Remove the transit bars as described in "Installation".

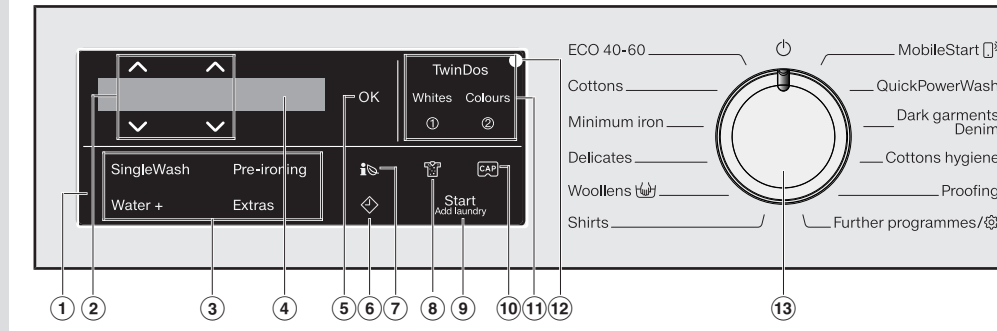
Switching on the washing machine
 ■ Turn the programme selector to the *Cottons* programme.

The welcome tone will sound and the welcome screen will light up. The display will guide you through the initial commissioning, which is divided into 5 steps.

For further information please refer to the separate operating instructions.

Operation with cold or hot water
 This washing machine is programmed at the factory for use with cold water only. If you want to use hot water as well, you will need to re-programme the washing machine as described in "Settings - Water intake".

Operating the washing machine



- Control panel**
The control panel consists of a display and various sensors.
- ^ v sensors**
The values in the display can be changed with the ^ v sensors.
- Sensors for Extras**
You can supplement the wash programmes with Extras.
- Display**
Different values are displayed and/or selected in the display.
- OK sensor**
The OK sensor is used to confirm selected values.
- ◇ sensor**
The ◇ sensor starts the Delay start function.
- 👁 sensor**
You can view information about the energy and water consumption of your washing machine with the 👁 sensor.
- 👤 sensor**
You can specify the level of soiling of the load in three settings. This sensor is only active with the TwinDos option activated.
- Start/Add laundry sensor**
 - Touching the *Start/Add laundry* sensor starts a programme. The sensor lights up constantly.
 - Once the programme has started, the *Start/Add laundry* sensor allows you to add laundry.

Washing environmentally and economically

- Programmes that are more efficient with regard to energy and water consumption generally have a longer running time. By extending the programme running time, the wash temperature that is actually reached can be reduced while still providing the same wash results.
- For example, the *ECO 40-60* programme has a longer running time than *Cottons 40°C* or *60°C*, but the *ECO 40-60* programme is more efficient in terms of energy and water consumption.

Operating the sensors
 The sensors react to fingertip contact. Selection is possible as long as the respective sensor is illuminated.
If a sensor is brightly lit, this means: currently selected
If a sensor is dimly lit, this means: selection possible

- 👁 sensor**
Activates detergent dispensing with a capsule.
- TwinDos sensors with options for Whites and Colours**
The TwinDos sensor is used for deactivating and activating automatic detergent dispensing.
- Optical interface**
For service technicians.
- Programme selector**
for selecting programmes and for switching the washing machine off. The washing machine is switched on by selecting a programme, and switched off by turning the programme selector to the 0 position.

- To get the most out of your machine, load the maximum dry load for the programme you are using.
- Use the *Express 20* programme for small, lightly soiled loads.

Preparing the laundry

- 1. Preparing the laundry**
 - Empty all pockets.
 - ⚠ **Damage due to foreign objects.** Nails, coins, paper clips, and so on can cause damage to garments and components in the machine. Check the laundry before washing and remove any foreign objects.

2. Selecting a programme

There are three possible ways to select a programme:

- 1. Selecting standard programmes via the programme selector**
 - Turn the programme selector to the required programme. The selected programme will appear in the display. This will then be replaced by the standard display.
- 2. Selecting additional programmes by turning the programme selector to "Further programmes/👤" and using the display:**
 - Turn the programme selector to the *Further programmes/👤* position. The following appears in the display: Silks 👤
 - Touch the ^ v sensors until the programme you want appears in the display.
 - Confirm the programme with the OK sensor.
- 3. Selecting programmes via the MobileStart 📱 function and the Miele App**
 - Turn the programme selector to the *MobileStart 📱* position.

The following appears in the display:
 Load laundry, close the door and press 'Start'. Appliance can be remotely controlled

The following appears in the display: 📱 MobileStart 📱
 The washing machine can now be operated with the Miele App.

Selecting a programme

3. Loading the washing machine

- Opening the door**
- Take hold of the door and pull it open.
 - Unfold the laundry and load loosely in the drum.

Closing the door

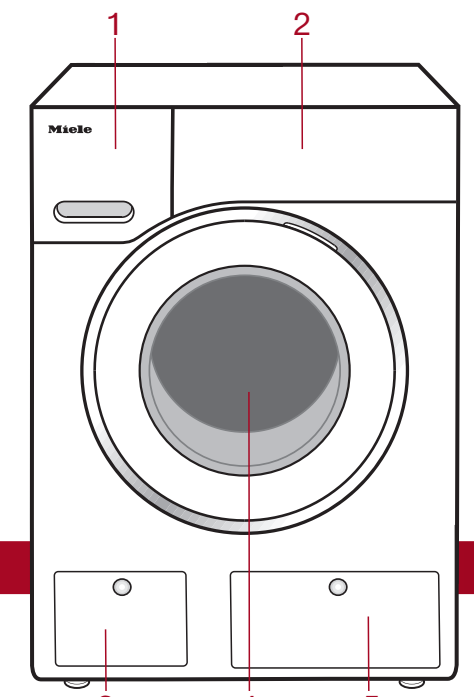
- Make sure that no items are caught between the door and the seal.
- Shut the door with a gentle swing.

4. Selecting programme settings

- Selecting a temperature/spin speed**
- Touch the ^ v sensors above or below the temperature or spin speed value in the display until the temperature/spin speed you want appears in the display.

Selecting Extras
 There are two ways of selecting Extras.

- 1. Directly above the sensor**
 - Touch the sensor for the Extra you want. It then lights up brightly.
- 2. Via the Extras sensor and the display**
 - Touch the Extras sensor. The following appears in the display: No Extras
 - Touch the ^ v sensors until the Extra you want appears in the display and confirm this with the OK sensor.



- 1 Detergent dispenser drawer**
- 2 Control panel**
- 3 Access to drain filter, drain pump and emergency release**
- 4 Door**
- 5 Access panel for TwinDos containers**

Selecting a programme

Degree of soiling

The 👤 sensor is only active when the *TwinDos* option is activated.

- 📄 **Light**
No visible soiling or stains
- 📄 **Normal**
Visibly soiled and/or just a few slight stains
- 📄 **Heavy**
Heavily soiled and/or clearly visible stains

Delay start

Delay start
 With Delay start you can delay the start of a programme. The start of the programme can be delayed from 15 minutes up to a maximum of 24 hours.

SmartStart
 The SmartStart function (only functional in selected countries) lets you define a period of time during which your washing machine will start automatically. The appliance will start on receipt of a signal, e.g. from your energy supplier, that indicates that the electricity tariff is particularly economical.

5. Adding detergent

There are several options for adding detergent.

TwinDos
 TwinDos dispensing is automatically activated for all programmes in which dispensing is possible.

Changing TwinDos dispensing
 You can change the suggested colour composition of the laundry.

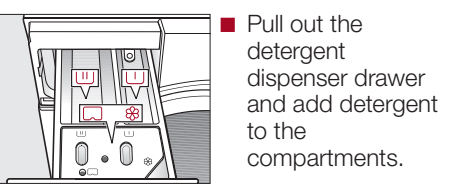
- Touch the sensor for *Whites* or *Colours*.

Deactivating TwinDos dispensing
 ■ Touch the *TwinDos* sensor. The sensor is only dimly lit and dispensing is deactivated.

Adding detergent

Any detergent suitable for automatic front loading washing machines can be used with this appliance. Please observe the instructions for use and dosage on the detergent packaging.

Ensure that TwinDos dispensing is deactivated.



- 📄 Detergent for the pre-wash
- 📄 Detergent for the main wash and soaking
- 📄 / Fabric softener, liquid starch or capsules

Activating CapDosing

- Touch the 📄 sensor. The following appears in the display: No Cap ✓
- Touch the ^ v sensors until the capsule you want appears in the display.
- Confirm the capsule with the OK sensor.

See "Detergent" in the operating instructions for more information on detergents, capsules and dosage.

Using detergent tablets or pods
 Always put detergent tablets or pods directly in the drum with the laundry. They cannot be added via the detergent dispenser drawer.

Starting the programme

6. Starting the programme

Touch the flashing *Start/Add laundry* sensor.

The door will lock and the programme will start. The programme status is displayed.

Energy savings

After 10 minutes the indicators will dim. The *Start/Add laundry* sensor flashes slowly.

You can reactivate the indicators:
 ■ Touch the *Start/Add laundry* sensor (this does not have any effect on a running programme).

Adding laundry during a programme sequence (AddLoad)

Laundry can be added or removed at any time, provided that the 📄 symbol is not lit up in the display.

- Touch the *Start/Add laundry* sensor.
- The following appears in the display:
 ⋯ Please wait
 ■ Wait until the following display lights up:
 ■ Door can be opened
 ■ Open the door and add or remove laundry.
 ■ Close the door.
 ■ Touch the *Start/Add laundry* sensor.
 The wash programme will continue.

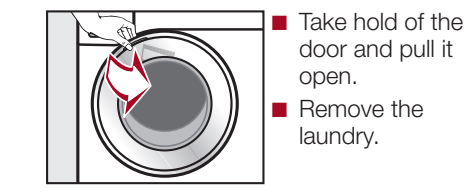
Useful tip: For safety reasons close the door.
 ■ Remove any used capsules from the detergent dispenser drawer.
Useful tip: Leave the detergent dispenser drawer slightly open to allow it to dry.

7. At the end of the programme

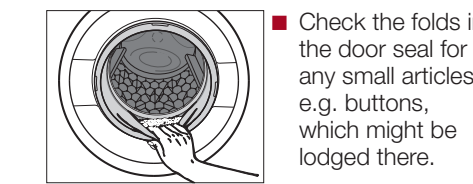
The door is locked in the Anti-crease phase. The display will change to show: *Finish/Anti-crease* and 📄 Press Start button

- Unlock the door either by touching the *Start/Add laundry* sensor or by turning the programme selector to the 0 position.

The door will be unlocked.
Useful tip: After the Anti-crease phase, the door will unlock automatically.



Items left in the drum could discolour other items in the next wash or become discoloured themselves. Check that all items have been removed from the drum.



- Check the folds in the door seal for any small articles, e.g. buttons, which might be lodged there.

Extras

Extras
 You can use the Extras sensor to augment the wash programmes.

SingleWash
 For efficiently washing a very small load (< 1 kg) in a normal wash programme. The wash duration is reduced. Please note the following advice:

- Use liquid detergent
- Reduce the dosage to a maximum of 50% of the amount quoted for a ½ load

Pre-ironing
 In order to reduce creasing, the laundry undergoes a smoothing process at the end of the programme. For optimal smoothing reduce the maximum load by 50%. Follow the instructions in the display. Small loads achieve a better result. The garments must be suitable for drying in a tumble dryer 📄 and suitable for ironing 📄.

Water +
 The water level in the wash and rinse stages is increased and a second rinse is carried out in the "Separate rinse/Starch" programme.

You can select other functions for the *Water +* sensor. These are described in "Settings".

Quick
 The programme duration is reduced. Mechanical action and energy usage are increased.

Stains
 For cleaning stained laundry. The programme sequence is altered with this option.

Pre-wash
 For laundry with large amounts of dirt, e.g. dust and sand.

Soak
 For heavily soiled and stained items with protein stains. A duration of between 30 minutes and 6 hours can be chosen for the soak process. See "Settings" for more information.
 The factory default setting is 30 minutes.

Intensive
 For hard-wearing laundry that is very heavily soiled. Cleaning efficiency is increased through more intense mechanical action and the application of more heat energy.

Extra quiet
 This option reduces noise levels during the wash programme. Use this if you want to wash during quiet periods (for instance, when children are sleeping). The final spin is automatically reduced to 📄 (Rinse hold). The programme duration is increased.

Extra gentle
 Drum rotation and wash duration are reduced. Lightly soiled fabrics are washed more gently.

AllergoWash
 This option should be used where high standards of hygiene are required. More energy is used to lengthen temperature holding times and more water is used to increase rinsing efficiency. The items must be suitable for drying in a tumble dryer 📄 and suitable for ironing 📄.

Programme chart

Programme	Load (in kg)	Temperature	Items	Extra
ECO 40-60	8.0		For normally soiled cotton garments A laundry load consisting of mixed cottons that are intended for washing at 40°C or 60°C can be washed in the same wash cycle. These settings are the most efficient in terms of energy and water consumption for washing cottons. Cottons, linens or cotton mix fabrics, e.g. table linen, towelling, underwear, T-shirts etc. Synthetic and mixed fibre textiles and easy care cotton.	A, B, C, D, E, F, G, H, I, J, K
Cottons	8.0	Cold to 60°C		A, B, C, D, E, F, G, H, I, J, K
Minimum iron	4.0	Cold to 60°C		A, B, C, D, E, F, G, H, I, J, K
Delicates	3.0	Cold to 40°C	Delicate garments made from synthetic fibre, mixed fibre, rayon and viscose.	A, B, C, D, E, F, G, H, I, J, K
Woolens	2.0	Cold to 40°C	Machine-washable or hand-washable wool or wool blend fabric. If the care label does not specify a temperature, wash using the cold setting. Shirts and blouses made of cotton and mixed fibre. Wash silk shirts and blouses in the Delicates programme.	A, B, C, D, E, F, G, H, I, J, K
Shirts	1.0/2.0	Cold to 60°C		A, B, C, D, E, F, G, H, I, J, K
MobileStart			The Miele App is used for selecting programmes and operating the machine.	
QuickPowerWash	4.0	40°C – 60°C	Moderately soiled garments which are also suitable for washing in the Cottons programme.	A, B, D
Dark garments/Denim	3.0	Cold to 60°C	Black and dark garments made from cotton, mixed fibres and denim.	A, B, C, D, E, F, G, H, I, J, K
Cottons hygiene	8.0	60°C to 90°C	Cotton or linen fabrics with direct skin contact or for which special hygiene requirements apply.	B, C, D, E, F, G, H, I, J, K
Proofing	2.5	40°C	For treating microfibre fabric, skiwear and table linen made from mainly synthetic fibres to provide a water and dirt resistant finish.	
Silks	1.0	Cold to 30°C	Silks and other hand-washable fabrics with no wool content, e.g. satin, lace and silk.	A, I
Outerwear	2.5	Cold to 40°C	Performance outerwear (e.g. jackets and trousers) made from membrane fabric such as Gore-Tex®, SYMPATEX®, WINDSTOPPER®, etc.	C, D, E, F, G, H, I, J, K
Express 20	3.5	Cold to 40°C	Cotton garments that have hardly been worn or are only very lightly soiled.	B, D
Sportswear	3.0	Cold to 60°C	Sportswear such as jersey shirts and leggings, and microfibre and fleece garments.	A, B, C, D, E, F, G, H, I, J, K
Automatic plus	6.0	Cold to 40°C	Mixed loads of garments sorted according to colour which are suitable for the Cottons and Minimum iron programmes.	A, B, C, D, E, F, G, H, I, J, K
Pillows	2 (40x60cm) 1 (60x60 cm)	Cold to 60°C	Synthetic filled washable pillows.	C, D, E, F, G, H, I, J, K
Curtains	2.0	Cold to 40°C	Curtains, including net curtains, specified as machine-washable by the manufacturer.	C, D, E, F, G, H, I, J, K
Down filled items	2.0	Cold to 60°C	Jackets, sleeping bags, pillows and other down-filled items.	C, D, E, F, G, H, I, J, K
First wash	2.0	Cold to 40°C	New items made of cotton, towelling and polyester fabric.	A, B, C, D, E, F, G, H, I, J, K
Down duvets	2.5	Cold to 60°C	Quilts, duvets and pillows with feather or down filling.	C, D, E, F, G, H, I, J, K
Clean machine	No load	85°C	With frequent washing at low temperatures there is a danger of a build-up of bacteria in the washing machine. Cleaning the washing machine will significantly reduce bacteria, mould, and biofilm, and prevent the build-up of unpleasant odours.	D

Ⓐ = SingleWash; Ⓑ = Pre-ironing; Ⓒ = Water +; Ⓓ = Quick; Ⓔ = Stains; Ⓕ = Soak; Ⓖ = Pre-wash; Ⓗ = Intensive;

Ⓛ = Extra quiet; Ⓜ = Extra gentle; Ⓝ = AllergoWash

PROGRAMME CHART

Detergent

	Miele recommended detergents		Miele capsules	
	UltraPhase 1 and 2			
ECO 40-60	✓		☒	☒
Cottons	✓		☒	☒
Minimum iron	✓		☒	☒
Delicates	✓		☒	☒
Woolens	-		☒	-
Shirts	✓		☒	☒
QuickPowerWash	✓		☒	-
Dark garments/Denim	✓		☒	-
Cottons hygiene	✓		☒	☒
Silks	-		☒	-
Outerwear	-		☒	-
Express 20	✓		☒	-
Sportswear	-		☒	-
Automatic plus	✓		☒	☒
Pillows	✓		☒	-
Curtains	✓		☒	☒
Down filled items	-		☒	-
First wash	✓		☒	-
Down duvets	-		☒	-
Separate rinse/Starch	-/-		☒/-	-/-

✓ Recommended
- Not recommended

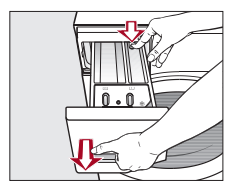
☒ Specialist detergents (e.g. WoolCare)
☒ Fabric care (e.g. fabric softener)
☒ Additive (e.g. booster)

Cleaning and care

Cleaning the detergent dispenser drawer

Washing at low temperatures and the use of liquid detergent can lead to a build-up of mould and bacteria in the detergent dispenser drawer.

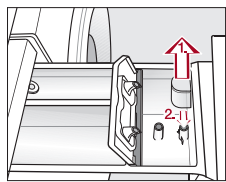
■ For hygiene reasons, clean the entire drawer at regular intervals.



■ Pull out the detergent dispenser drawer until a resistance is felt.

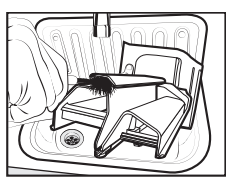
■ Press down the release button and, at the same time, pull the drawer right out of the machine.
■ Clean the detergent drawer with warm water.

Cleaning the siphon tube and the fabric softener channel



■ Pull the siphon out of the compartment and clean it under warm running water.

■ Clean the siphon tube in the same way.
■ Refit the siphon.

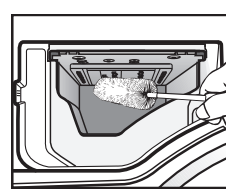


■ Clean the fabric softener channel using a brush and warm water.

Liquid starch results in clogging. If clogged, the siphon in the compartment will not work and the compartment can overflow.

Clean the siphon particularly thoroughly after using liquid starch a few times.

Cleaning the detergent dispenser drawer housing



■ Use a bottle brush to remove detergent residues and limescale from the jets inside the detergent dispenser drawer housing.

■ Replace the detergent dispenser drawer slightly open to allow it to dry.

Cleaning the drum (Hygiene info)

Washing at low temperatures and/or using liquid detergents can cause bacteria and odours to build up in the washing machine. Use the *Clean machine* programme to clean the machine. Note the message in the display: Hygiene info: Run a programme at min. 75°C or "Clean machine" programme

TwinDos maintenance

⚠ Damage resulting from dried laundry detergent.

If the system has not been used for a long time (more than two months), detergent in the hoses can become viscous or dry out. The hoses can become blocked and would then need to be cleaned by a service technician.

Clean the TwinDos system.

To clean the system, you need a "TwinDosCare" cleaning cartridge. These are available from shop.miele.com

Problem solving guide

Problem	Possible cause and remedy
The control panel remains dark.	There is no power to the machine. ■ Check whether the mains plug is plugged in and switched on. ■ Check whether the circuit breaker has tripped. The washing machine has switched off automatically to save energy. ■ Switch the washing machine on again by turning the programme selector.
The following appears in the display: ⚠ Service Door release fault F35	The door is not closed properly. The door lock could not engage. ■ Close the door again. ■ Start the programme again. If the fault message appears again, contact Miele.
⚠ Check drainage. See	The water outlet is blocked or restricted. The drain hose has been fixed too high. ■ Clean the filters and the drain pump. ■ The maximum drain height is 1 m.
⚠ Water intake. See	The water inlet is blocked or restricted. ■ Check whether the tap is turned on properly. ■ Check whether the inlet hose is kinked. ■ Check whether there is sufficient water pressure.
⚠ Waterproof system. Turn off Service.	The water protection system has reacted. ■ Turn off the tap. ■ Call Miele.
⚠ Service Fault F	There is a fault. ■ Disconnect the washing machine from the electricity supply. Switch off at the wall and withdraw the plug from the socket, or switch off the mains circuit breaker. ■ Wait at least 2 minutes before reconnecting the washing machine to the electricity supply. ■ Then switch the washing machine on again. ■ Restart the programme. If the fault message appears again, contact Miele.
ⓘ Check hot water intake	The water inlet for hot water is blocked or turned off. The programme was carried out using cold water. ■ Check whether the tap is turned on properly. ■ Check whether the inlet hose is kinked. ■ Check whether there is sufficient water pressure.

Problem	Possible cause and remedy
ⓘ Check detergent	Excessive foam has built up during washing. ■ With TwinDos, check the dosage amount set. ■ Reduce the amount set in 10% increments. ■ Use less detergent next time and follow the manufacturer's instructions on dosage given on the packaging.
ⓘ Hygiene info: Run a programme at min. 75°C or "Clean machine" programme	A programme using a temperature above 60°C has not been run for a long time. ■ Turn the programme selector to <i>Further programmes</i> and select the Clean machine programme in the Maintenance submenu. ■ Run the Clean machine programme using the Miele IntenseClean machine cleaner or a universal powder detergent. This will clean the washing machine and prevent a build-up of bacteria and odours.
ⓘ Align the washing machine	The <i>Pre-ironing</i> Extra at the end of the programme could not be carried out properly. ■ Check whether the washing machine is aligned correctly (see "Installation – Levelling the machine"). ■ Check whether the maximum drain height of 1 m has been exceeded.
ⓘ ① is almost empty. Only a few more programmes are possible	If the fault message appears again, contact Miele. The washing machine can still be used, but without the <i>Pre-ironing</i> Extra. The detergent in the cartridge is running low. The remaining detergent is sufficient for another 4 to 8 wash programmes. ■ Order a new cartridge.
ⓘ Use "TwinDos" or start Mainten. See	TwinDos or automatic dispensing via compartment ① and/or ② has not been used for a long time. ■ Use TwinDos for one of your next loads. ■ Carry out the TwinDos maintenance programme as described in "Cleaning and care - TwinDos maintenance".
⚠ Start TwinDos Maint. for comp. ①. See	TwinDos or automatic dispensing via compartment ① and/or ② has not been used for a long time. It is possible that detergent has dried inside the hoses. ■ Carry out the TwinDos maintenance programme immediately as described in "Cleaning and care - TwinDos maintenance".

Miele

Quick Start Guide

Washing machine



PROBLEM SOLVING GUIDE

These short instructions are not a substitute for the operating instructions supplied with the appliance. Please read the operating instructions supplied with your washing machine before using it for the first time and take note of the Warning and Safety instructions, as well as the full descriptions on how to use your appliance.