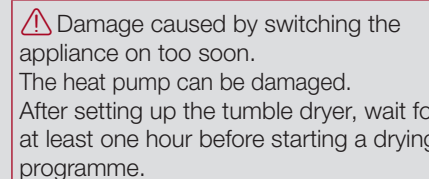
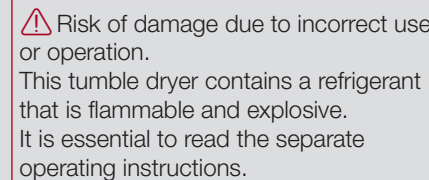
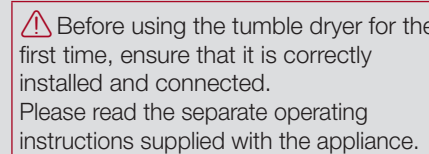
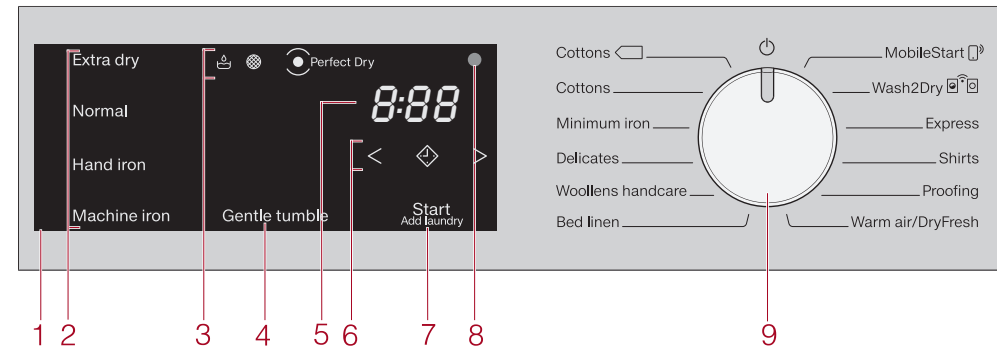


Using for the first time



Operation



1 Control panel

The 2, 4, 6 and 7 sensors react to fingertip contact. Selection is possible as long as the respective sensor is **brighly** lit, this means: currently selected.

- If a sensor is **dimly** lit, this means: selection possible.

2 Sensors for the drying levels

After selecting a drying level programme with the programme selector: touch one of the sensors to select a drying level.

3 Indicator lights

- ☼ light up if necessary: see "Problem solving guide".
- ☼ **Perfect Dry**: The Perfect Dry system measures the residual moisture present in the laundry and provides a more precise drying result. This indicator ...
 - ... will flash until the programme duration has been determined, and then go out.
 - ... will light up when the selected drying level is reached near the end of the programme.
 - ... will remain dark with the following programmes: *Woollens handcare*, *Warm air/DryFresh*.
- 4 **Gentle tumble sensor** For drying temperature-sensitive textiles with the ☼ symbol.

5 Time display

The remaining programme duration will be displayed in hours and minutes.

6 < > sensors

- After touching the < sensor, a later start time for the programme can be selected.
- The < and > sensors are used for selecting the duration of the Delay start period or the duration of the *Warm air* programme.

7 Start/Add laundry sensor

Touching the *Start/Add laundry* sensor starts the selected programme. The current programme can be interrupted to add laundry. The sensor flashes slowly as soon as it is possible for a programme to be started and then lights up constantly after the programme has started.

8 Optical interface

For service technicians.

9 Programme selector

The programme selector can be turned clockwise or anti-clockwise. The dryer is switched on by selecting a programme, and switched off by turning the programme selector to the ☼ position.

- *MobileStart* ☼: Remote control via the App.
- *Wash2Dry* ☼: Programme selection based on a connected washing machine.

Energy saving tips

To avoid unnecessarily long drying times and high consumption of energy:

- Spin the laundry at the maximum spin speed in the washing machine.
- Load according to the optimum amount of laundry recommended for the programme being used. This will mean that the energy consumption for the amount of laundry is at its most economical.

- Make sure the room temperature is not too high. If there are other heat producing appliances in the room in which the tumble dryer is located, make sure the room is well-ventilated and switch the other appliances off, if possible.

- Clean the fluff filters in the door and in the door opening after every drying cycle.

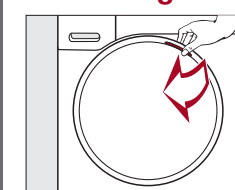
Drying

1. Notes on correct laundry care

⚠ Damage due to foreign objects. Foreign objects left in the laundry can melt, burn, or explode. Ensure that any foreign objects (e.g. detergent dispensing balls, lighters, etc.) have been removed from the laundry.

- Sort the laundry according to the type of fibre and weave, size, garment care label symbol and the drying level required.
- Untangle the laundry.
- Check seams and stitching to ensure that padding and linings are intact.
- Fasten duvet covers and pillow cases to prevent small items from being rolled up inside them.
- Fasten hooks and eyes.
- Tie together textile belts and apron ties.
- Sew in or remove loosened underwiring from bras.

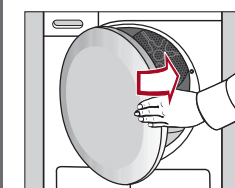
2. Loading the tumble dryer



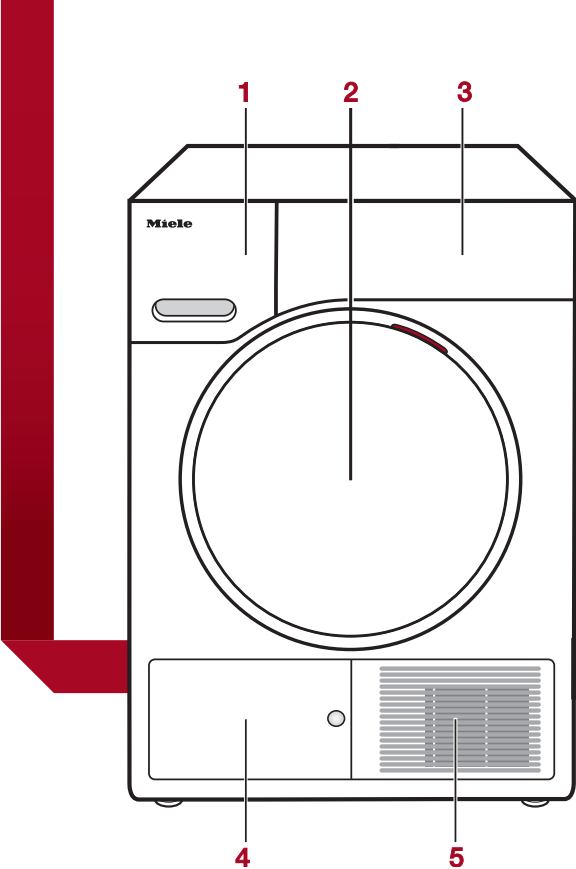
- Open the door.
- Unfold the laundry and load loosely into the drum.



Do not overload the drum. Overloading can cause unnecessary wear and tear of the laundry, give a disappointing drying result and cause more creasing.



- If you are not using a fragrance flacon: push the tab down completely (see arrow) so that the socket is closed.
- Shut the door with a gentle swing.
- When closing the door, make sure that laundry does not get trapped in the door opening.



1 Condensed water container

- empty after every drying programme

2 Door

3 Control panel

4 Access panel for the heat exchanger and plinth filter

- Do not open during drying

5 Cool air intake grille

- Do not obstruct with a laundry basket or other objects

3. Selecting a programme and starting it

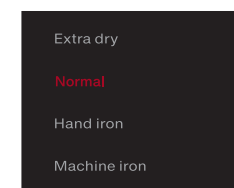
There are 3 possible ways to select a programme:

- Touch the programme selector.
- 1. **Selecting a programme using the programme selector**
 - A drying level may light up and durations will appear in the time display.
- Select programme settings
- 2. **MobileStart** ☼ programme selector position
 - The tumble dryer is operated via the App.
- 3. **Wash2Dry** ☼ programme selector position
 - Programme selection is determined by the washing machine. No further programme setting is necessary.
 - Once the washing machine programme has finished, the drying time will be displayed in the tumble dryer time display.
- Once the wash programme has ended, place the clean laundry in the tumble dryer and start the drying programme.

Selecting programme settings

Programmes with drying levels

- *Cottons*, *Minimum iron*, *Delicates*, *Shirts*, *Express*, *Bed linen*



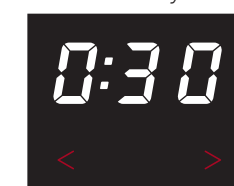
- Touch the sensor for the drying level you want. It then lights up brightly. Any drying level can be selected for the *Cottons*, *Express*, and *Bed linen* programmes. A limited range is available with the other programmes.

Other programmes

- *Cottons* ☼, *Woollens handcare*, *Proofing*

The drying level/duration is preset by the dryer automatically and cannot be altered.

- *Warm air/DryFresh*



- You can reduce the duration with the < sensor.

Selecting Gentle tumble (if required)

Delicate fabrics (with the ☼ symbol on the care label, e.g. acrylic garments) are dried at a lower temperature and with a longer programme duration.

- Touch the *Gentle tumble* sensor. It then lights up brightly.

Selecting Delay start (if required)

With Delay start you can delay the start of the programme by up to a maximum of 24 hours.

Delay start cannot be used with the *Warm air/DryFresh* programme.



Starting a programme

- Touch the flashing *Start/Add laundry* sensor. It will light up.

Energy saving: After 10 minutes the indicators dim and the *Start/Add laundry* sensor starts flashing.

- Touch the *Start/Add laundry* sensor to switch the indicators on again (this does not have any effect on a running programme).

Adding laundry

You can add laundry.

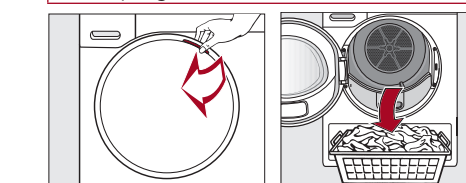
- Follow the instructions in "Changing the programme sequence".

4. Removing the laundry at the end of the programme

End of programme: 0:00 lights up in the time display and the *Start/Add laundry* sensor goes out.

- Energy saving: After 10 minutes the indicators dim and the *Start/Add laundry* sensor starts flashing.
- The dryer will switch off automatically 15 minutes after the end of the Anti-crease phase (with programmes without an Anti-crease phase it will switch off 15 minutes after the end of the programme).

⚠ Do not open the door before the end of the programme.



- Open the door.
- Remove the laundry.

⚠ Check that all items have been removed from the drum. If items are left in the dryer, they could be damaged by overdrying when the dryer is used the next time.

If the dryer is switched on at the mains and the door is opened, the drum lighting will come on. It will go out after a few minutes to save energy.

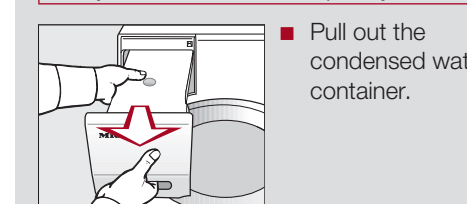
- Turn the programme selector to ☼.
- Clean the fluff filters.
- Shut the door with a gentle swing.
- Empty the condensed water container.

Emptying the condensed water container

Empty the condensed water container after every drying programme.

The ☼ indicator will light up when the maximum level in the condensed water container is reached. To switch the ☼ indicator light off: Open and close the door while the dryer is switched on.

Damage to the door and fascia panel. The door and the fascia panel can be damaged when removing the condensed water container. Always close the door completely.



- Pull out the condensed water container.
- To prevent water running out, keep it in a horizontal position when carrying it. Hold it at the front and at the back.
- Empty the condensed water container.
- Replace the container in the dryer.

Do not drink condensed water. It can cause health problems in people and animals.

Changing

Adding or removing laundry

You have forgotten an item of laundry, but the programme has already started.

- Touch the *Start/Add laundry* sensor. The programme will start.
- Open the door.
- Add or remove laundry.
- Close the door.
- Touch the *Start/Add laundry* sensor. The programme will start.

* Exceptions:

In some cases, e.g. during the cooling phase or in the *Proofing* programme, you cannot add laundry.

- In these cases *Add* will not light up.

Cancelling or changing the current programme

It is no longer possible to change the selected programme. This prevents the appliance being operated unintentionally, e.g. by children. If you adjust the programme selector, -0- will light up in the time display. -0- goes out when you select the original programme again.

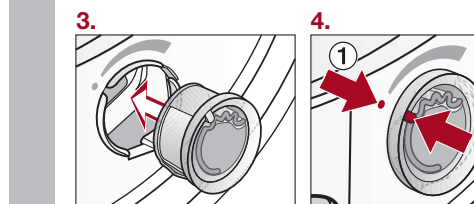
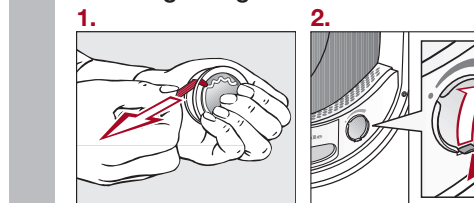
- Turn the programme selector to the ☼ position.
- The programme is cancelled.
- Select a new programme.
- Touch the *Start/Add laundry* sensor.

Fragrance flacon

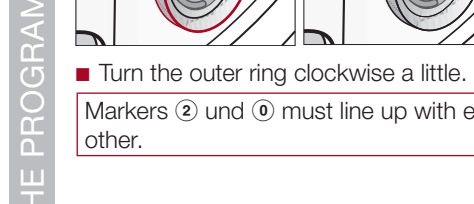
Tip: Using a fragrance flacon (optional accessory) will add a pleasant fragrance to your laundry.

Before using a fragrance flacon, please read "Warning and Safety instructions - Using a fragrance flacon (optional accessory)" and "Fragrance flacon" in the operating instructions.

Inserting a fragrance flacon



Markers ① and ② must line up with each other.



Markers ② and ③ must line up with each other.

Before drying

The further you open the flacon, the more intense the fragrance.

- Turn the outer ring clockwise.

After drying

To avoid the fragrance escaping needlessly:

- Turn the outer ring anti-clockwise until marker ② is in position ①.

When not in use, you can store the fragrance flacon in its original packaging. Ensure that it is positioned so that it does not leak.

Before cleaning the fluff filters

Remove the fragrance flacon.

- Only store the fragrance flacon in its original packaging.

Never lay the fragrance flacon down. Otherwise, the fragrance will leak out.

Programme overview

Programme	Load*	Items	Gentle tumble
Cottons	8 kg	Cotton items such as those described under <i>Cottons Normal</i> with normal residual moisture.	-
Cottons	8 kg	Towelling, jersey wear, T-shirts, underwear, baby clothes, workwear, covers, jackets, bathrobes, and flannelette bed linen Warning: Do not use <i>Extra dry</i> for jersey fabrics (e.g. T-shirts, underwear, baby clothes), as they have a tendency to shrink.	X
Minimum iron	4 kg	Workwear, overalls, pullovers, dresses, trousers, leggings and table linen.	X
Delicates	2.5 kg	Shirts, blouses, lingerie, appliquéd garments.	-
Woolens handcare	2 kg	Pullovers, cardigans, socks, stockings.	-
Bed linen	4 kg	Bed linen	-
MobileStart	The Miele@mobile App is used for selecting programmes and operating the machine.		
Wash2Dry	The programme is selected automatically in conjunction with the programme selection on the connected washing machine.		
Express	4 kg	Garments suitable for the <i>Cottons</i> programme.	X
Shirts	2 kg	Shirts and blouses.	X
Proofing	2.5 kg	Microfibre fabric, skiwear, outerwear, fine close weave cotton garments (poplin), tablecloths.	-
Warm air / DryFresh	8 kg	Fire hazard! Do not use proofing agents containing paraffin. <i>Warm air</i> (for drying): Thick and multi-layered jackets, pillows, sleeping bags, blankets. <i>DryFresh</i> (for freshening up): All fabrics. Use the DryFresh flacon and select a programme duration of 60 minutes.	X

* Weight of dry laundry

Garment care label symbols

Drying

- Normal / Higher temperature
- Reduced temperature: select *Gentle tumble* (for delicate fabrics).
- Do not tumble dry

Ironing

- Very hot
- Hot
- Warm
- Do not iron

Tips on drying

- Always observe the maximum recommended loads given in the Programme chart.

Overloading can cause unnecessary wear and tear to the laundry. It can give a disappointing drying result and cause more creasing.

- Do not load the drum with items that are still soaking wet. Make sure your laundry is spun at the maximum spin speed in the washing machine before drying.
- Minimum iron fabric tends to crease more, the larger the load. This is particularly the case for garments made from very fine weave fabric, such as shirts or blouses.

X = Yes, - = No

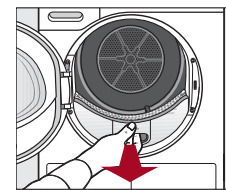
Cleaning and care

Fluff filters

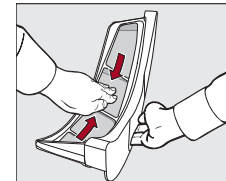
Removing visible fluff

Clean the 2 fluff filters in the door opening after every drying cycle.

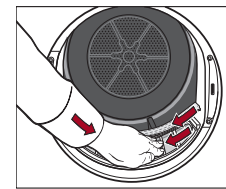
Remove the fragrance flacon first (if fitted).



- Pull the upper fluff filter forwards to remove it.



- Use your fingers or a vacuum cleaner to remove the fluff from the surface of the filter.

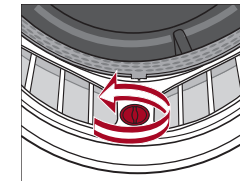


- Push the upper fluff filter back in until it clicks into position.
- Close the door.

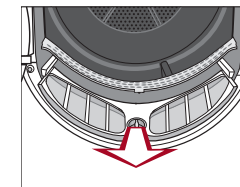
Cleaning the fluff filters and air flow openings thoroughly

If the drying duration has become longer or the surface of the filters is visibly compacted with fluff, you should carry out the following cleaning procedure.

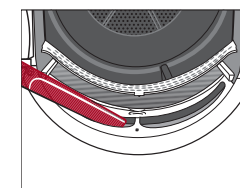
- Pull the upper fluff filter forwards to remove it.



- Turn the yellow dial on the lower fluff filter in the direction of the arrow (until you hear it click).



- Hold the dial and pull the fluff filter forwards to remove it.



- Use a vacuum cleaner with a long crevice nozzle attached to remove any visible fluff from the upper air flow openings.

- Flush the fluff filters through with warm running water.
- Shake the fluff filters thoroughly and then dry them carefully.

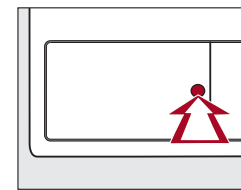
Ensure the filters are dry before replacing them. Wet filters could cause operational faults.

- Refit all of the fluff filters and close the door.

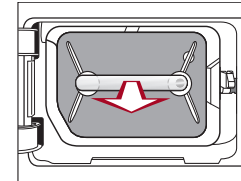
Plinth filter

Clean the plinth filter whenever the indicator light comes on or when the programme duration is longer than usual.

Switch the indicator light off: Open and close the door while the dryer is switched on.

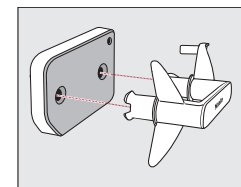


- Press the round, indented area on the heat exchanger access panel to open it.



- Pull the plinth filter out by the handle.

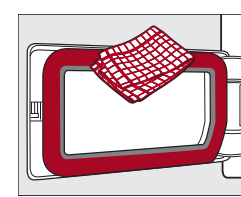
Removing the plinth filter will cause a guide pin in the dryer to come out. This pin ensures that the heat exchanger access panel can only be closed if the plinth filter is fitted.



- Pull the handle out of the plinth filter.
- Clean the plinth filter thoroughly under running water.

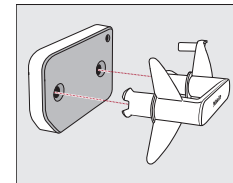
- Carefully squeeze the water out of the plinth filter.

The plinth filter must not be refitted dripping wet.

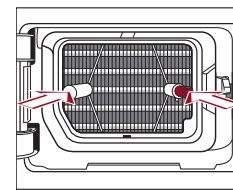


- Use a damp cloth to remove any fluff from the access panel.

Refitting the plinth filter



- Fit the filter back on the handle the right way.



- Insert the handle with the plinth filter attached over the two guide pins.

- Close the heat exchanger access panel.

Problem solving guide

Problem/Fault message	Possible cause and remedy
lights up after a programme is cancelled	The condensed water container is full or there is a kink in the drain hose. <ul style="list-style-type: none">Empty the condensed water container.Check the drain hose. To switch off : <ul style="list-style-type: none">Open and close the door (with the dryer switched on).
lights up at the end of a programme	There is a build-up of fluff (see "Cleaning and Care"). <ul style="list-style-type: none">Clean the fluff filters.Clean the plinth filter. To switch off : <ul style="list-style-type: none">Open and close the door (with the dryer switched on).
-0- lights up	The programme selector has been moved. <ul style="list-style-type: none">Select the original programme again. The time remaining will appear in the display.
Bars flash in the display at the end of a programme: 1.1.1...1.1.1...1.1.1...	The programme has finished but the laundry has not yet cooled down. <ul style="list-style-type: none">Either remove the laundry and spread it out to cool down or leave it in the tumble dryer to cool down during the cooling phase.
-... flashes/lights up after the tumble dryer is switched on and a programme cannot be selected	Access via a code has been activated. <ul style="list-style-type: none">You must enter the correct code to use the tumble dryer. See "Programmable functions - <i>P07</i> PIN Code" in the operating instructions.
The display is dark and only the Start/Add laundry sensor is flashing	This is not a fault, but a normal function. <ul style="list-style-type: none">Touch a sensor to switch on the indicators. See "Programmable functions - <i>PII</i> Control panel switch-off status" in the operating instructions. The drum will turn at intervals in the Anti-crease phase.

Problem/Fault message	Possible cause and remedy
The dryer is switched off at the end of the programme	The tumble dryer switches off automatically. This is not a fault, but a normal function.
The laundry is not sufficiently dry	The load consisted of different types of fabric. <ul style="list-style-type: none">Finish drying using the <i>Warm air</i> timed drying programme.Select a more suitable programme next time. Tip: You can alter the drying levels for some programmes. See "Programmable functions - <i>P01</i> Cotton drying levels" and "<i>P02</i> Minimum iron drying levels" in the operating instructions.
Items made of synthetic fibres are charged with static electricity after drying	Synthetic fibres tend to attract static charge. Static charge can be reduced by adding fabric softener to the final rinse in the washing programme.
There is a build-up of fluff	Fluff is principally the result of friction when garments are being worn and to some extent when they are being washed. Machine drying hardly causes any fluff to form. Fluff is collected by the fluff filters and the plinth filter and can be removed easily. See "Cleaning and care".
There are humming noises	This is not a fault. The compressor is operating. These noises are normal and caused by the operation of the compressor.

Quick Start Guide
Heat pump tumble dryer



These short instructions are not a substitute for the operating instructions supplied with the appliance. Please read the operating instructions supplied with your tumble dryer before using it for the first time. Take note of the Warning and Safety instructions, as well as the full descriptions on how to use your appliance.