

PLW 6111 SLIMLINE LABWASHERS

Compact dimension, high capacity. Miele's SlimLine lab washers offer a comprehensive and systematic solution to reprocessing laboratory glassware for analytical experiments.



- Slim design, 25 ⁹/₁₆ in. (650mm) wide
 - SmartLoad 3 Racks, 4 Levels
 - Up to 126 narrow-necked glasses or 121 pipettes
 - 50L carboy
 - 3.5" display with intelligent controls
 - Rear basket docking
 - Steam condenser
 - Auto liquid dispensing
 - Variable speed pump
 - Multi-stage filtration system
 - Spray arm monitoring
 - DryPlus - hot air HEPA drying
- Test Certificate**
- cULus Certified
- Optional Features**
- Conductivity sensor
 - Sampling tap
 - Boiler (US version)
 - USB Port (CDN version)
 - IO/Q Validation

Business Benefits



- Flexibility of the chamber design makes it ideal for glassware reprocessing needs of a wide array of lab applications, providing a safe and efficient solution to any washing by hand.
- Basket configurations (injection and/or larger flat glasswares) to accommodate all types and sizes of glasswares using 3 baskets on telescopic racks.
- Rear basket docking system guarantees streamlined and efficient water and air circuit usage.



Labor Savings



- No manual pre-rinse required. Reduces staff resources, water consumption and glassware breakage.
- Reprocess the smallest lab glassware items to the very large (up to 50L).



Ultimate Protection



- Chamber is made from high-grade stainless steel (DIN 1.440/AISI 316L).
- Laser welded and crevice free hygienic chamber enables high standards of hygiene and purity.
- Conductivity monitoring ensures high-level process security.
- Cleaning process with the use of ProCare Lab chemicals.



For more information on product, scan the QR code.



PLW 6111 SLIMLINE LABWASHER



PLW 6111
10959290
(62611177US)

PLW 6111 CS
10959280
(62611176US)

Program	Max. Temperature	
Mini	140°F (60°C)	W1, FR
Standard	158°F (70°C)	W1, FR
Universal	167°F (75°C)	W1, FR
Intensive	176°F (80°C)	W1
Inorganic	167°F (75°C)	W1
Organic	185°F (85°C)	W2
Plastics	131°F (55°C)	W1, FR
Pipettes	158°F (70°C)	W1, FR
Oil	185°F (85°C)	W1
Disin 93C-10	199°F (93°C)	W1

Legend:

W1 - Wash 1

W2 - Wash 2

FR - Final Rinse

Unit Dimensions

Machine dimensions H x W x D [mm, in.]	1870, 73 5/16 x 650, 25 9/16 x 687, 27 1/16	Chamber size [L, cu.ft]	210, 7.42
Usable wash cabinet H x W x D [mm, in.]	665, 26 3/16 x 540, 21 1/4 x 585 23 1/16		

Electrical

Default	3AC 208V 30A 60Hz / 8.25KW / 4 x AWG 8
Option	-

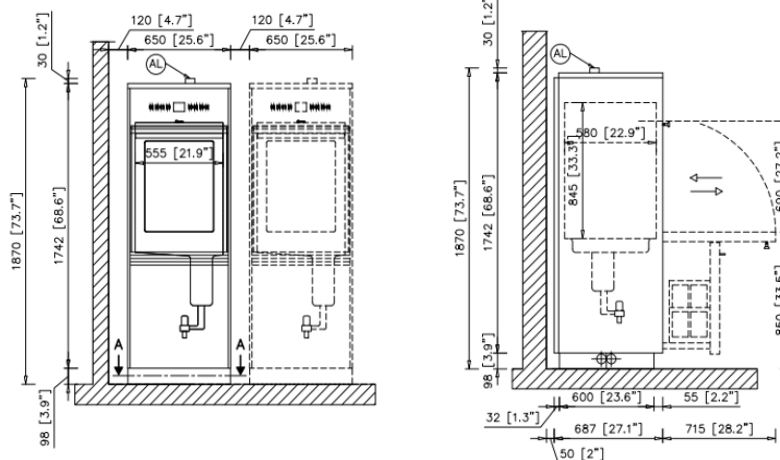
Plumbing

Cold water	1 x 3/4 in. MGHT required on site / Flow rate 3.2 gpm (12.1L/min.) / Water pressure 29-116 psi (199-799 KPa), pressurized
Hot water	1 x 3/4 in. MGHT required on site / Flow rate 3.2 gpm (12.1L/min.) / Water pressure 14.5-116 psi (99-799 KPa), pressurized
DI water	1 x 3/4 in. MGHT required on site / Flow rate 3.2 gpm (12.1L/min.) / Water pressure 14.5-116 psi (99-799 KPa), pressurized. Below 29 psi = booster pump
Drain connection	1 x 3/4 in. Barbed connector required on site / Flow rate 13.2 gpm (49L/min.)

Shipping

Dimensions H x W x D [mm, in.]	1,870, 73 5/16 x 650, 25 9/16 x 687, 27 1/16	Weight [kg, lbs.]	250, 553
--------------------------------	----------------------------------------------	-------------------	----------

For more information, refer to Installation Manual, and for design specs, visit [Miele Professional Specs | ARCAT](#).



Miele Inc., 9 Independence Way, Princeton, NJ 08540, USA

P | 800.991.9380 | E | prosales@mieleusa.com | mieleusa.com/professional



Miele Ltd., 161 Four Valley Dr., Vaughan, ON L4K 4V8, Canada

P | 888.325.3957 | E | professional@miele.ca | mieleprofessional.ca