

Installation Plan  
**Tumble dryer**



PT 8337 EL (Electrically Heated)

---

**U.S.A.**

**Miele, Inc.**

**National Headquarters**

9 Independence Way  
Princeton, NJ 08540

Phone: 800-991-9380

Fax: 609-419-4241

[www.mieleusa.com](http://www.mieleusa.com)

**Technical Service & Support**

**Nationwide**

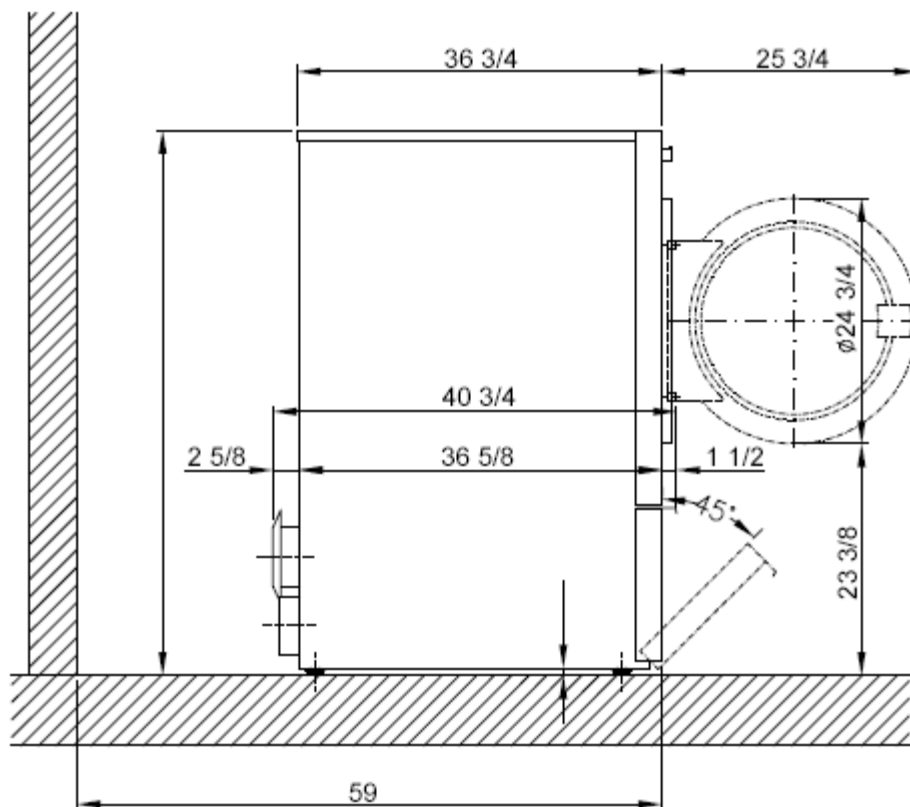
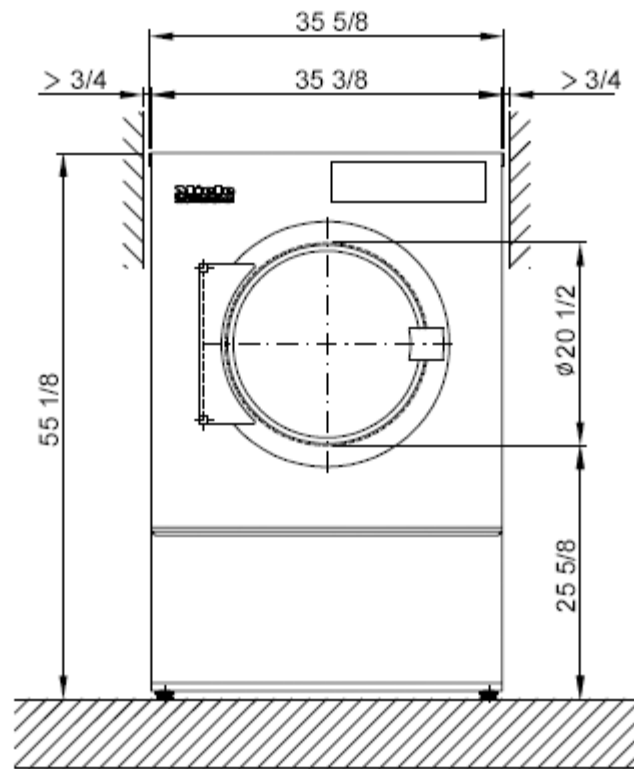
Phone: 800-991-9380

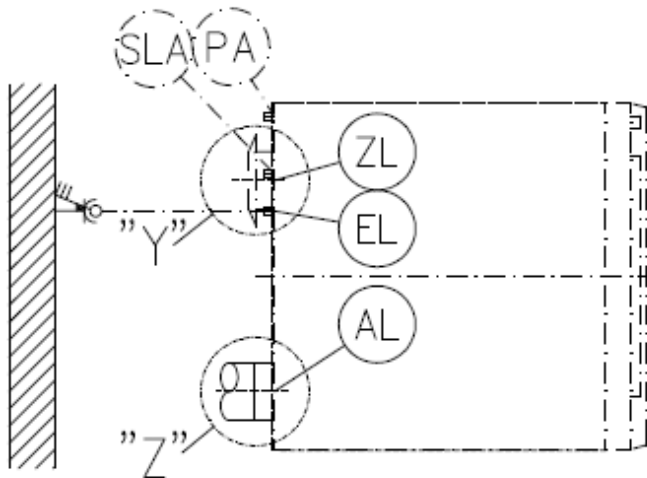
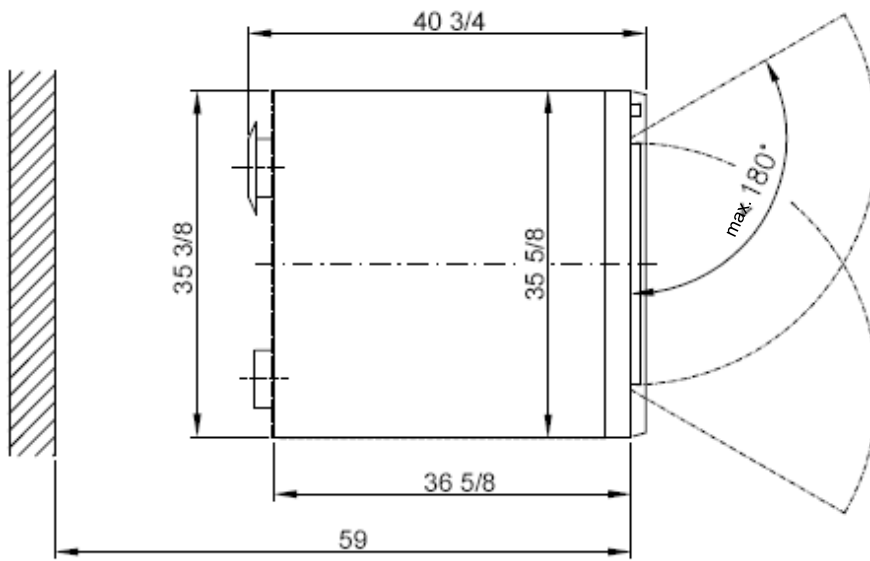
Fax: 800-220-1348

[proservice@mieleusa.com](mailto:proservice@mieleusa.com)

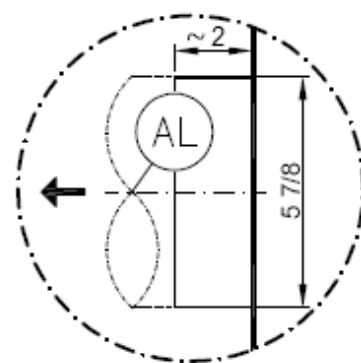
It is essential to read the operating and installation instructions before installing,  
commissioning or using the machine.  
This avoids the risk of accidents or damage.

All rights reserved.

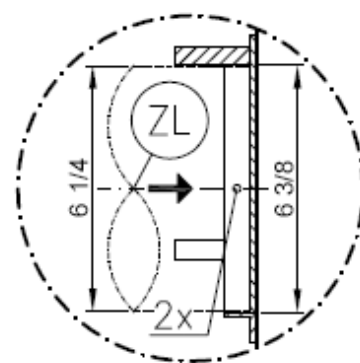


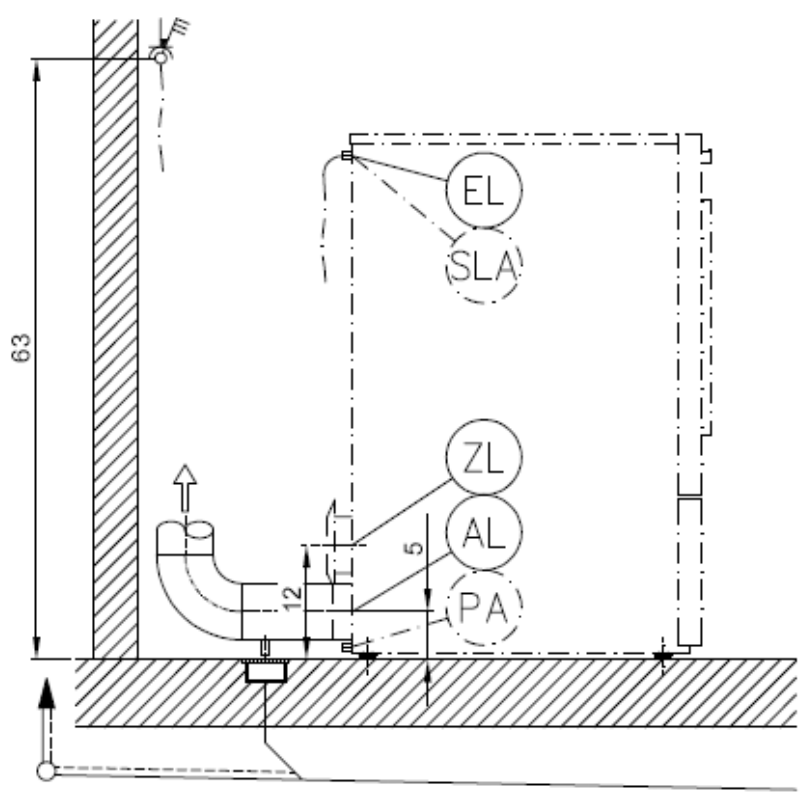
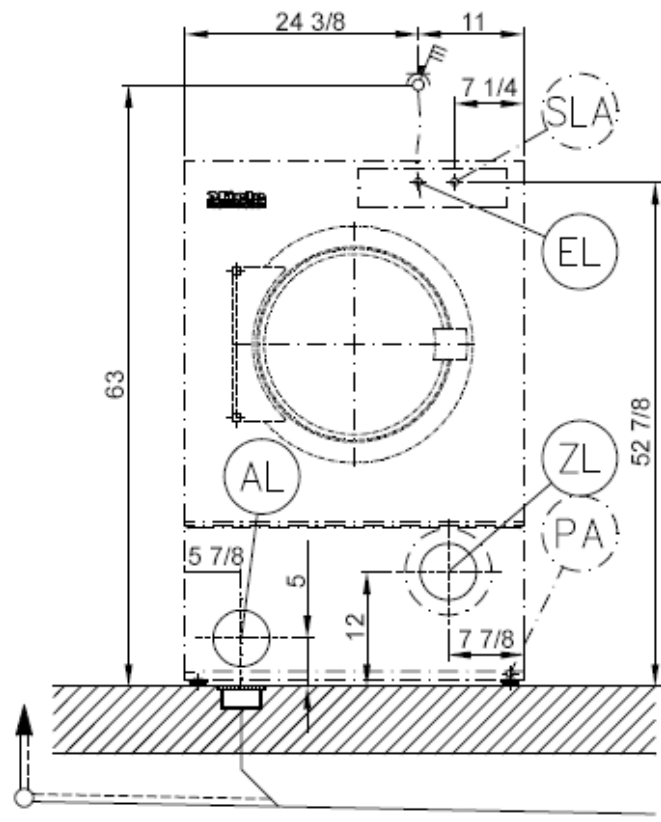


"Z"

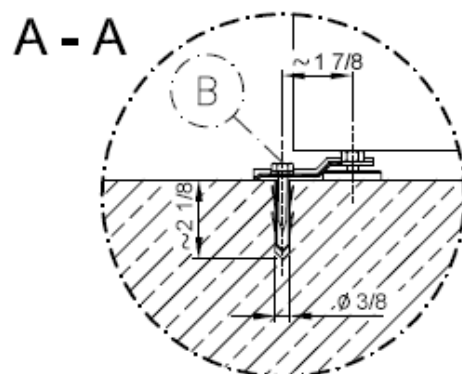
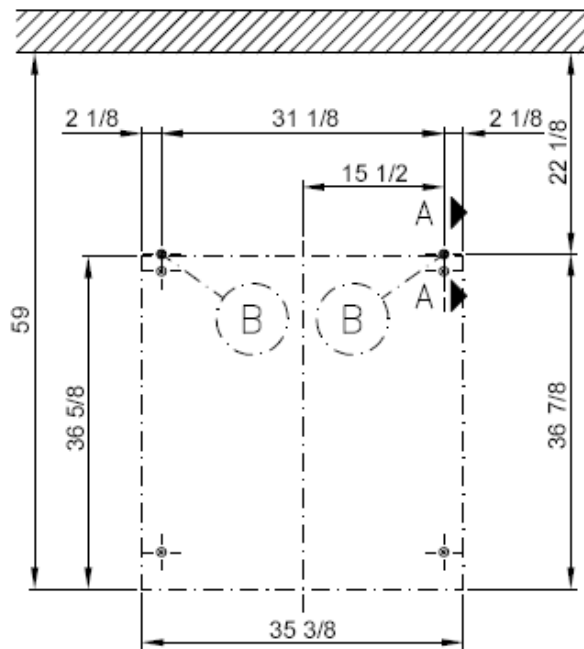
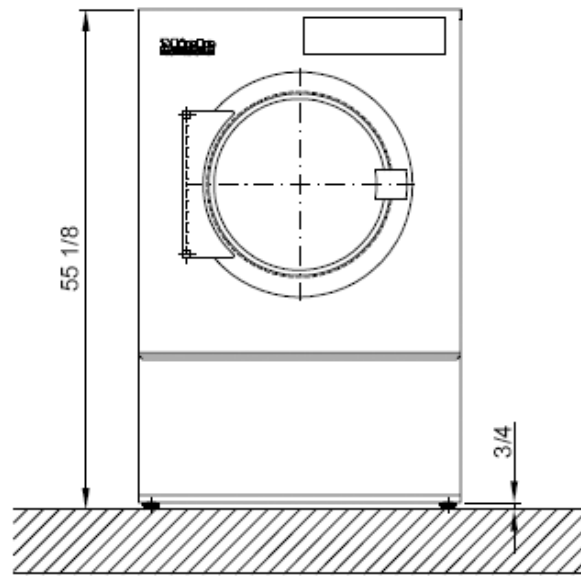


"Y"

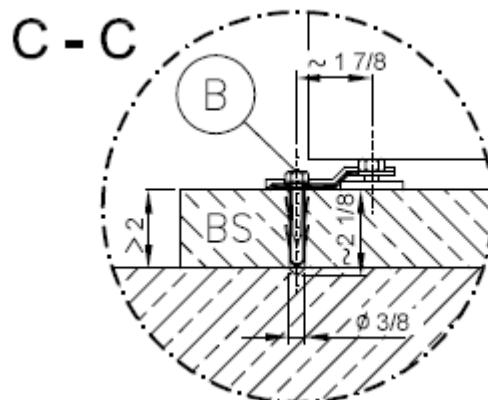
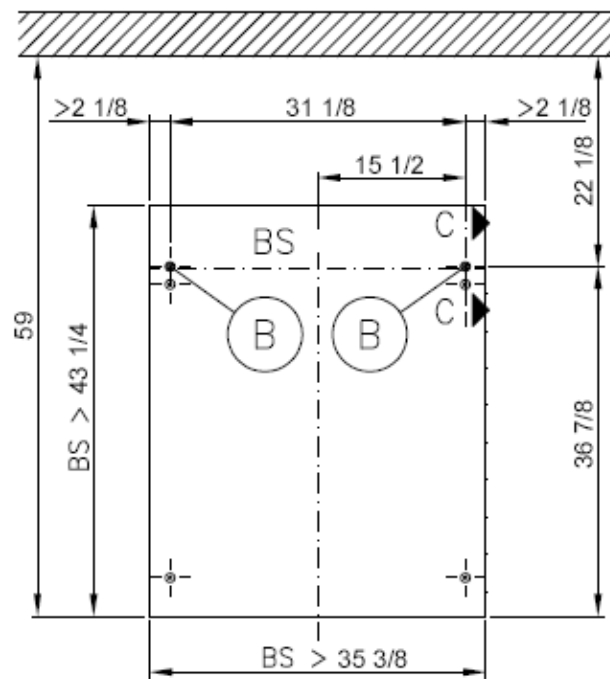
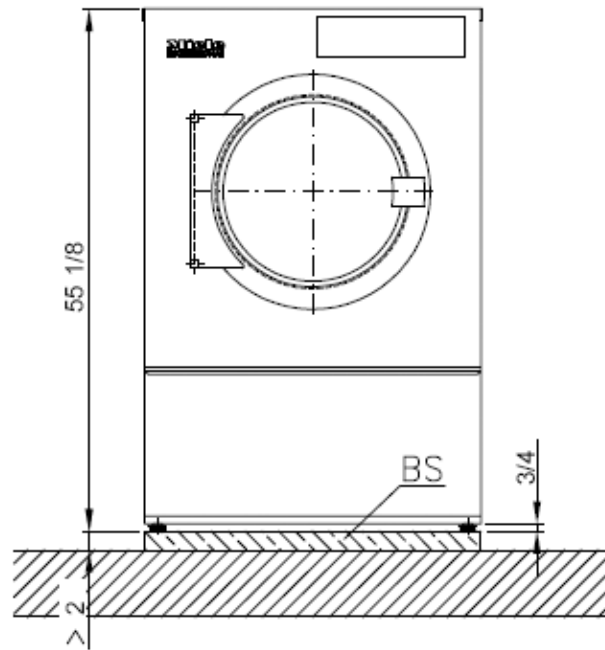


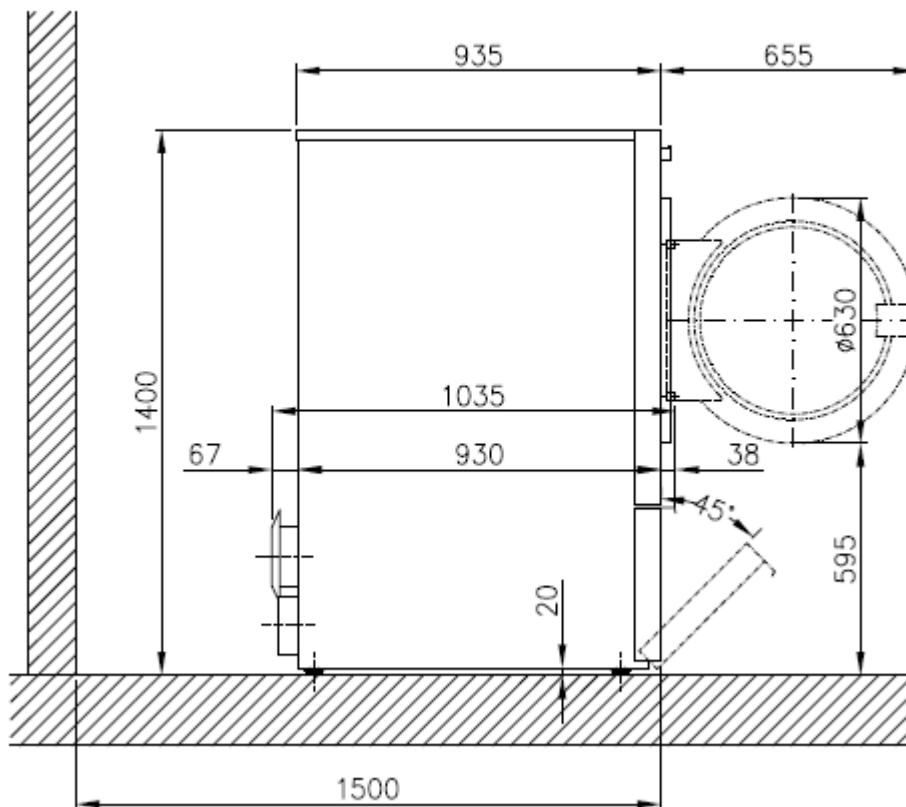
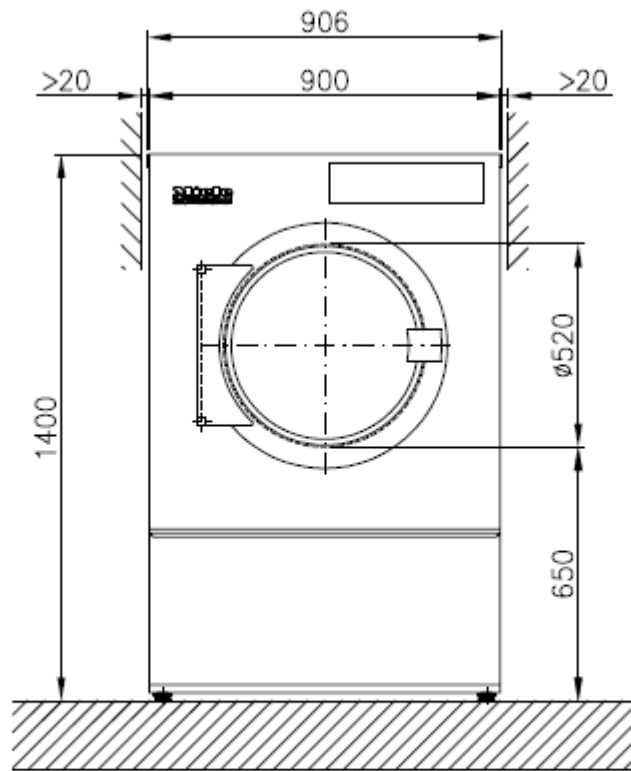


# Standard installation

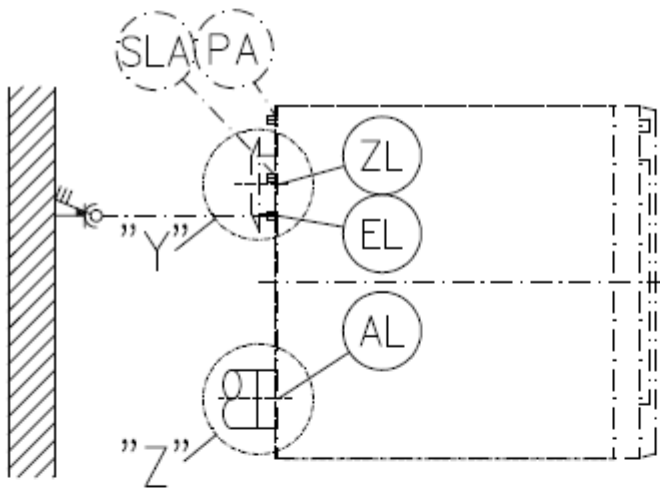
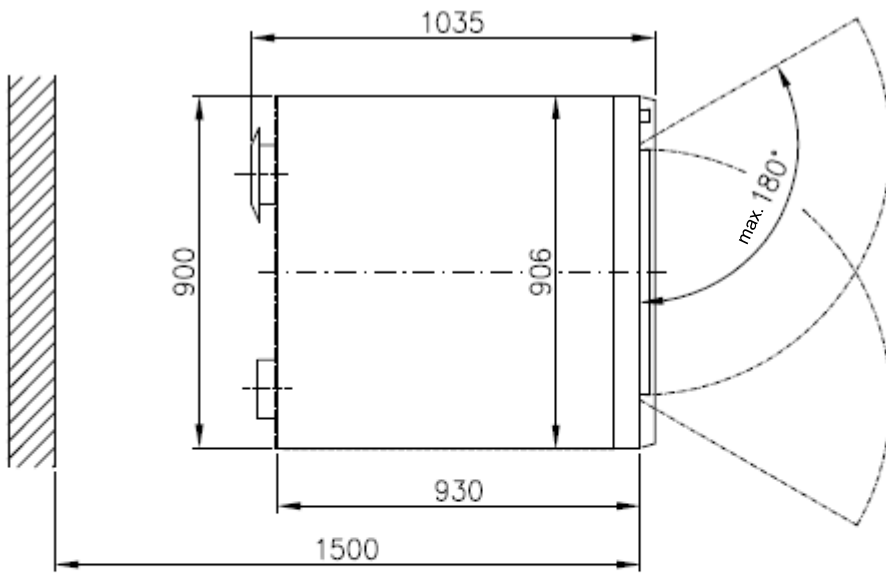


Option: Installation on concrete platform (BS)

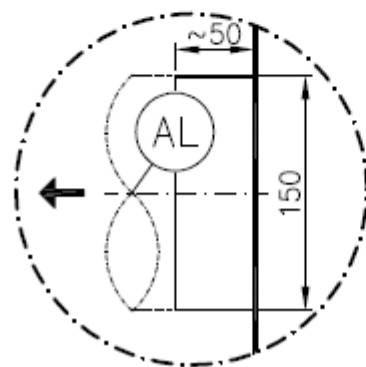




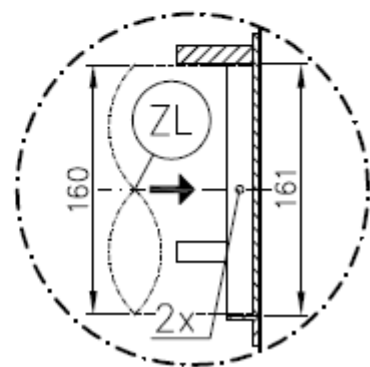


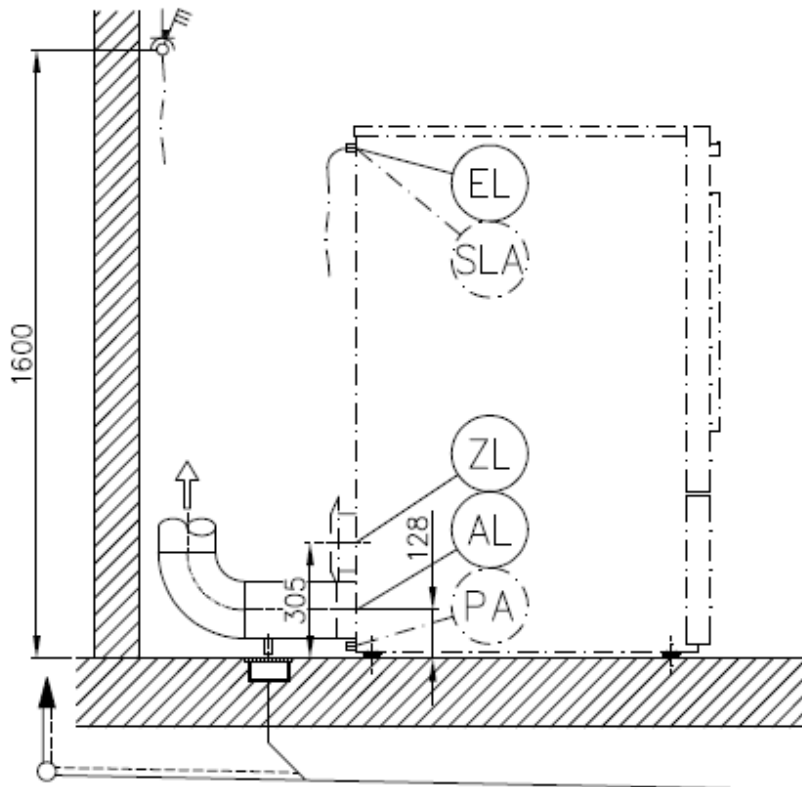
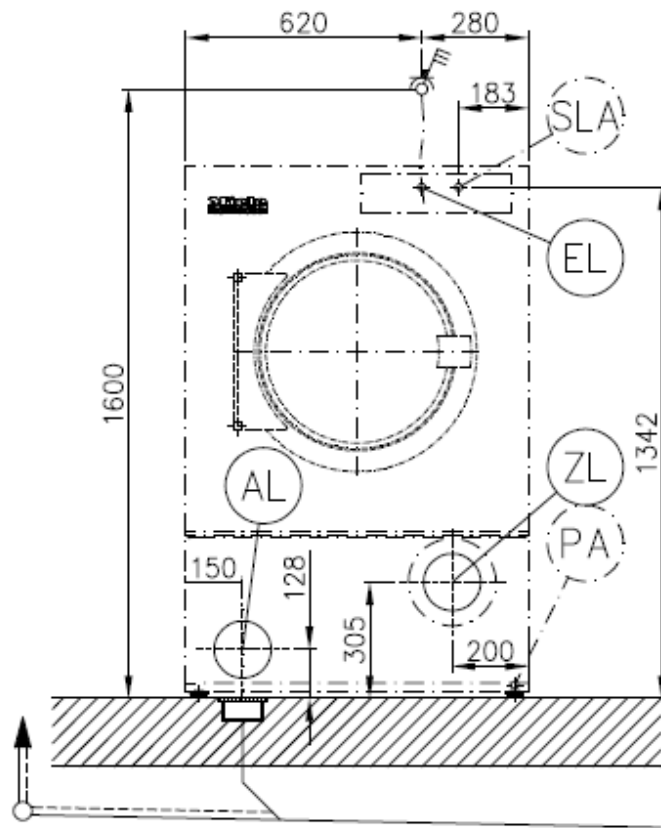


"Z"

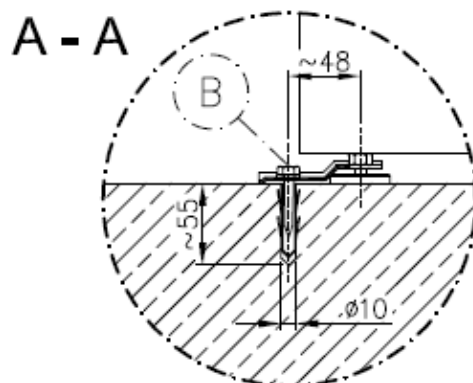
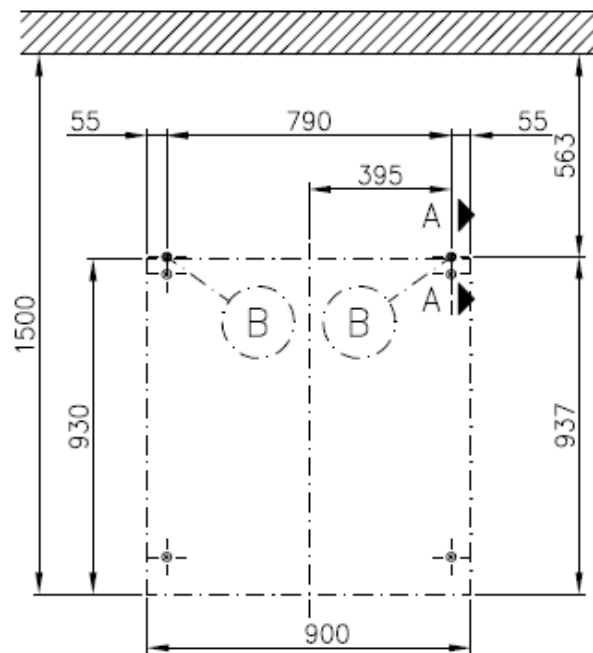
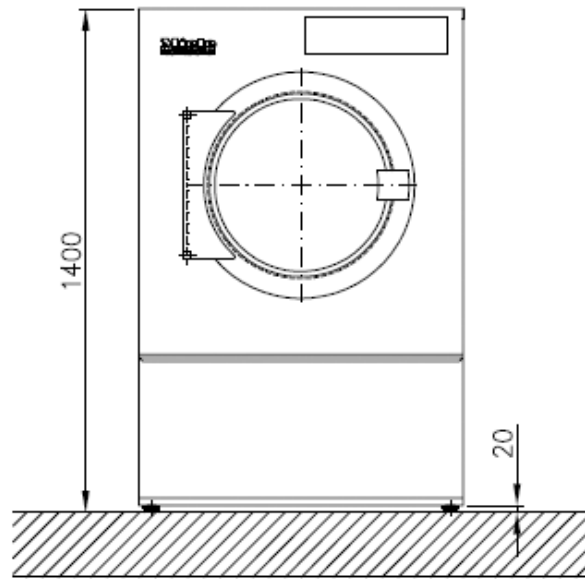


"Y"

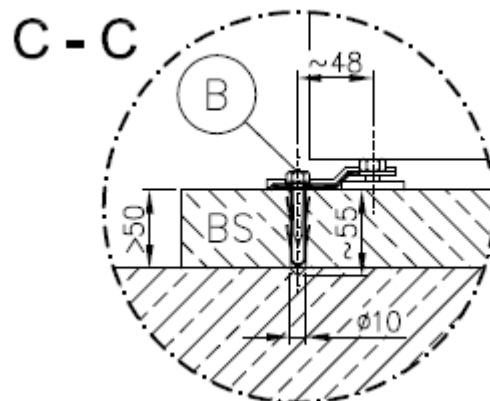
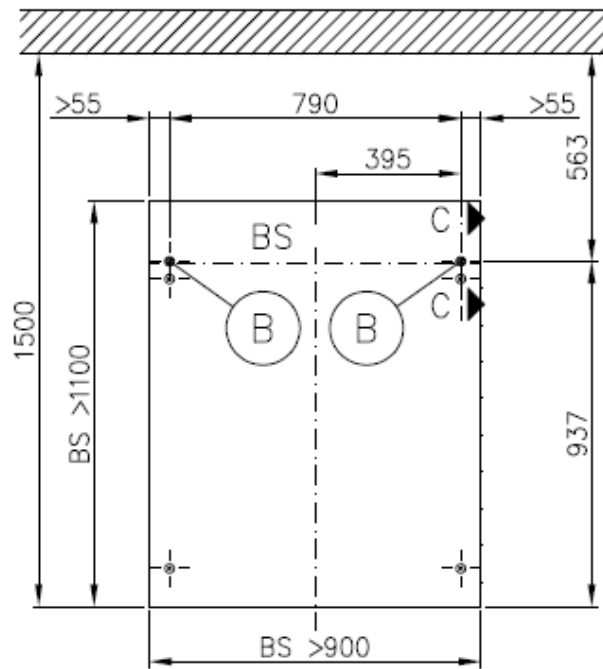
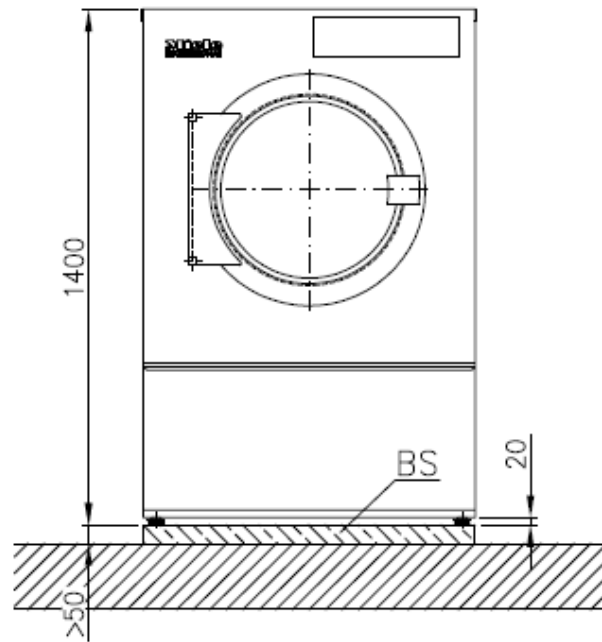




# Standard installation



Option: Installation on concrete platform (BS)



# Technical datasheet



Tumble dryer:  
Heating:

PT 8337  
Electric (EL)

Legend:



Abbreviations in bold type:  
Connection required



Abbreviations in circle with dashes:  
Connection optional or required depending on model version

en - US

## Optional extras:

<b>BS</b>	<b>Concrete base</b>	Quality and density of concrete must comply with load. <b>Concrete base must be firmly secured to floor!</b>  Recommended height Minimum height Minimum width Minimum depth	4" 2" 35 3/8" 43 1/4"	100 mm 50 mm 900 mm 1100 mm
-----------	----------------------	---	--------------------------------	--------------------------------------

## Machine connections:

<b>EL</b>	<b>Electrical connection</b>	<b>Standard voltage</b> Frequency Rated load Fuse rating Connection cable, min. cross-section  Connection cable to be ordered separately	3 AC 208 V 60 Hz 52582 BTU/h 3 x 65 A 4 x AWG 6	15.4 kW  4 x 10 mm <sup>2</sup>
		<b>Convertible to</b> Frequency Rated load  Fuse rating Connection cable, min. cross-section  Connection cable to be ordered separately	3 AC 220 - 240 V 60 Hz 59070 - 69654 BTU/h 3 x 65 A 4 x AWG 6	17.3 - 20.4 kW  4 x 10 mm <sup>2</sup>
	<p>Electrical connection must comply with national regulations.</p> <p>Connection using multi-pole wall socket in compliance with IEC/EN 60309 and IEC/EN 60947 is recommended in order to simplify electrical tests.</p> <p>If machines are hard-wired, a multi-pole switch must be provided on site.</p> <p>A wall socket or isolator must be accessible after installation.</p>			

PA	<b>Equipotential bonding</b>	<p>Connection with male thread Connection with washers and nut.</p> <p>Accessories not included</p> <p>If necessary, equipotential bonding with good galvanic contact must be provided in accordance with all appropriate national and local regulations.</p>	3/8" x 1 3/8" 3/8"	10 mm x 35 mm M 10
SLA	<b>Peak load energy management</b>	<p>Control contact voltage Connection cable, min. cross-section</p> <p>Connection cable to be ordered separately</p> <p>Connection via a flexible supply lead with a separate isolator is recommended. The isolator should be visible and easily accessible after machine installation.</p>	AC 230V 5 x AWG 14	5 x 1.5 mm <sup>2</sup>
AL	<b>Air outlet</b>	<p>Max. nominal air flow in vented mode Max. permissible pressure loss</p> <p>Connection on machine side (ext. diameter) Connection pipe provided on site (int. diameter) Max. temperature</p> <p>As relative humidity inside the vent duct can be as high as 100%, suitable measures must be taken to prevent a backflow of condensate into the machine.</p>	21188.8 cu ft/h 0.03 psi  6" 6" 176 °F	600 m <sup>3</sup> /h 200 Pa  150 mm 150 mm 80 °C
ZL	<b>Air intake</b>	<p><b>Standard connection:</b> Air intake from installation site Unobstructed air intake into room recommended (corresponding to 3 times the vent cross-section of machine) A sufficient supply of fresh air should be ensured to replace the air extracted.</p>	82.3 in <sup>2</sup>	531 cm <sup>2</sup>
		<p><b>Alternative connection:</b> Ducted air intake (from outside building) Connector on machine (int. diameter) Connection pipe provided on site (ext. diameter)</p> <p>Lid removal exposes live components! For safety reasons, the pipe connected for central air intake should be at least 35.43" [900 mm] long and secured with two screws.</p>	6 3/8" 6 1/4"	161 mm 160 mm
B	<b>Fittings</b> (supplied)	<p><b>Without base:</b> 2 x clamps 2 x screws DIN 571 (Ø x length) 2 x rawl plugs (Ø x length) Machine should be bolted to the floor. Fixing materials for floor screed have to be provided on site.</p>	1/4" x 1 5/8" 3/8" x 2"	6 mm x 40 mm 10 mm x 50 mm
		<p><b>On concrete platform:</b> 2 x clamps 2 x screws DIN 571 (Ø x length) 2 x rawl plugs (Ø x length)</p> <p><b>Machine must be bolted to the platform!</b> Fixing materials for floor screed have to be provided on site.</p>	1/4" x 1 5/8" 3/8" x 2"	6 mm x 40 mm 10 mm x 50 mm
		<p><b>Miele base UG 8350:</b> 4 x fixing sets (to secure machine to base) 4 x screws DIN 571 (Ø x length) 4 x rawl plugs (Ø x length)</p> <p><b>Machine must be secured to base!</b> Fixing materials for floor screed have to be provided on site.</p>	1/4" x 1 5/8" 3/8" x 2"	6 mm x 40 mm 10 mm x 50 mm

	<b>Machine data</b>	Machine width Machine depth Machine height Casing width Casing depth  Minimum width of delivery access to installation site Recommended rear wall gap (measured to front of machine) Min. wall gap (to rear edge of lid)  Net weight Dynamic floor load, max. Average heat dissipation (depends on ambient room temperature and selected program) Noise level Sound pressure level (measured at a distance of 39.37" from the machine and at a height of 63").	35 5/8" 40 3/4" 55 1/8" 35 3/8" 36 5/8"  36 1/4" 59" 19 3/4"  364 lbs 419 lbf 2013 BTU  67.6 dB (A) 55 dB (A)	906 mm 1035 mm 1400 mm 900 mm 930 mm  920 mm 1500 mm 500 mm  165 kg 1860 N 590 W
<b>Installation should only be carried out by authorized installers in accordance with all local and national regulations!</b> Follow installation instructions when installing machine. All rights reserved.				