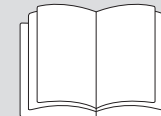


## Using for the first time

⚠ Before commissioning the tumble dryer for the first time, make sure it has been installed correctly. Connect it correctly. Please read the separate operating instructions supplied with the appliance.



⚠ Damage caused by switching the appliance on too soon. The heat pump can be damaged. After setting up the tumble dryer, wait for at least one hour before starting a drying programme.

### Switching on the tumble dryer

- Press the sensor.

The welcome screen will light up.

The display will guide you step by step through the initial commissioning process.

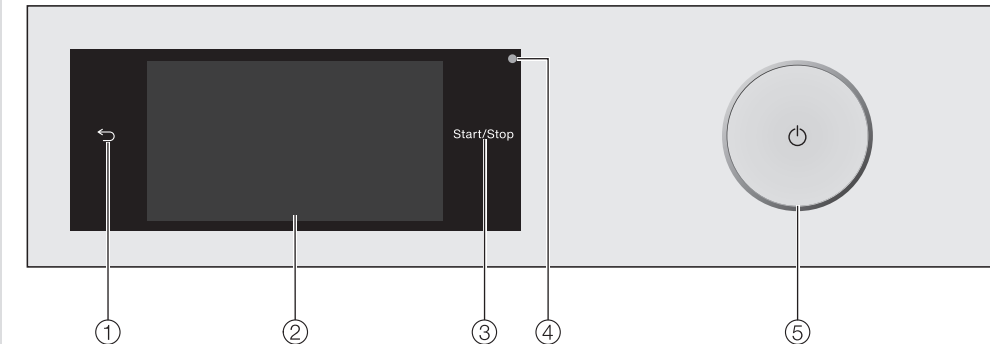
For further information, please refer to the separate operating instructions.

### Energy savings

By taking these measures, you can reduce energy consumption:

- Spin the laundry at the maximum spin speed in the washing machine
- Dry a full load size
- Ventilate well at high room temperature
- Clean the fluff filters.

## Operation



- ① **sensor**  
Takes you back one level in the menu.
- ② **Touch display**

- ③ **Start/Stop sensor**  
Touching the Start/Stop sensor starts the selected programme or cancels a programme that has already started. The programme can be started as soon as the sensor is flashing on and off. The sensor lights up constantly once the programme has started.
- ④ **Optical interface**  
For service technicians.

### Touch display and sensors

The and **Start/Stop** sensors and the sensors in the display react to fingertip contact.

The touch display can be scratched by pointed or sharp objects, e.g. pens. Only touch the display with your fingers.

- ⑤ **sensor**  
For switching the tumble dryer on and off. The tumble dryer switches off automatically to save energy. This occurs 15 minutes after the end of the programme/Anti-crease phase, or after being switched on if no further selection is made.

### Main menu

After switching on the tumble dryer, the main menu will appear in the display. You can access all important sub-menus from the main menu. Touch the sensor at any time to return to the main menu. Values that have not yet been confirmed are not saved when you return to the main menu.

### Programmes

For selecting drying programmes.

### Favourites

You can save your own customised drying programmes.

### Wash2Dry

A drying programme tailored to the laundry is set in conjunction with the connected washing machine.

### MobileStart

With *MobileControl* you can operate your tumble dryer remotely with the Miele App.

### Drying assistant

The Drying assistant guides you step by step so that you can select the optimum drying programme for your laundry.

### Settings

You can alter the tumble dryer's electronics to suit changing requirements in the *Settings* menu.

### Operating the touch display

#### Scrolling through menus

You can scroll to the right or the left by swiping your finger across the screen. The orange scroll bar under the pictures shows that there are additional options to choose from.

#### Options

Touch an option in the menu to select it. If there are multiple options, the selected option will be highlighted in orange.

#### Pull-down menu

Touch the top edge of the screen in the middle and drag down with your finger.

## Drying

### Preparing the laundry

⚠ Damage due to foreign objects which were not removed from the laundry. Foreign objects can melt, burn, or explode.

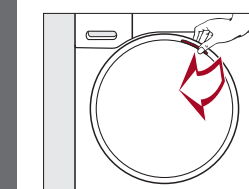
- Remove foreign objects (e.g. detergent dispenser, loose bra hangers, lighter and all objects) from the laundry.
- Fasten duvet covers and pillow cases to prevent small items from being rolled up inside them.

#### Care symbols in textiles

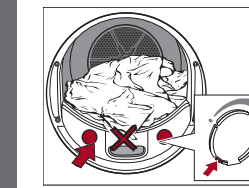
- ☒ Do not tumble dry
- ☑ Suitable for tumble drying
- ☑ *DryCare 40* or *Gentle tumble*
- ☑ Ironing (●●● hot, ●● moderate, ● warm)

### Loading the tumble dryer

Do not overload the drum. Overloading can give a disappointing drying result and cause unnecessary wear and tear to the laundry. It can also cause more creasing.

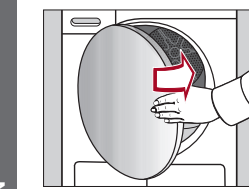


- Loosen the laundry.
- Open the tumble dryer door.
- Check that the drum is empty.
- Load the laundry in the drum.
- Insert the fragrance flacon.

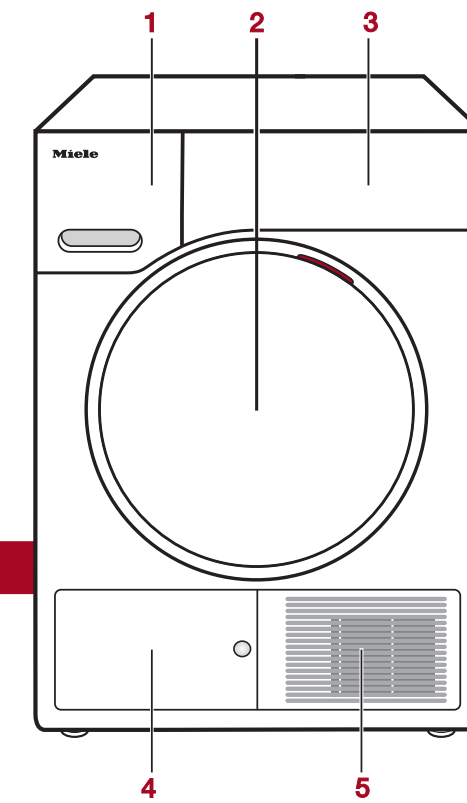


If you are drying without a fragrance capsule, close both sockets. Slide the tab of each slider downwards (arrows).

- Shut the door with a gentle swing.



Risk of damage to laundry. When closing the door, make sure that laundry does not get trapped in the door opening.



- 1 **Condensed water container**  
2 **Door**  
3 **Control panel**  
4 **Plinth filter access panel**  
5 **Cold air intake grille**

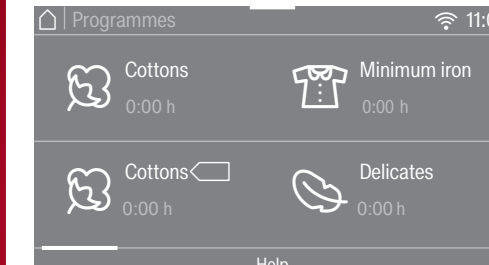
### When selecting Wash2Dry

After the programme has finished in the washing machine, the tumble dryer display will show the most appropriate drying programme for the laundry.

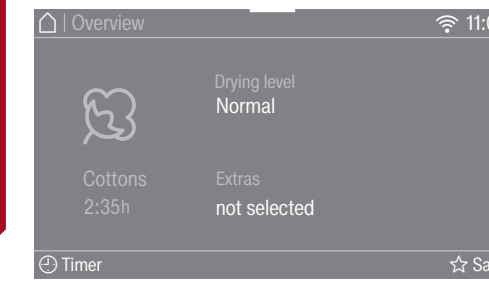
- Once the wash programme has ended, place the clean laundry in the tumble dryer and close the door.
- To start the programme, all you need to do is press the **Start/Stop** sensor on the tumble dryer.

### 1. Selecting a programme

- Touch the Programmes sensor.



- Scroll to the right of the display until the programme you want appears.



- Touch the sensor for that programme.

- You can change the drying level or the Duration (only in timed drying programmes).

The display will change to show the Overview menu.

There are 4 further ways of selecting a programme.

1. The Wash2Dry function
2. Favourites
3. Drying assistant
4. MobileStart

### 2. Selecting programme settings

**Useful tip:** The condensed water container must be filled to use certain programmes.

#### Selecting the drying level

Drying levels can be selected for certain programmes as per the "Programme chart".

- Touch the Drying level sensor.
- Scroll in the display until the drying level you want appears.
- Touch the sensor for the drying level.

**Useful tip:** *HygieneDry*: reduce laundry load by half.

### Selecting the programme duration

You can select a programme duration for the programmes *Cool air*, *Warm air*, *Basket programme*.

- Touch the Duration sensor (only in the *Warm air* programme).
- Place your finger on the number that you want to change and move your finger in the desired direction.
- Confirm with the OK sensor.

#### Selecting an Extra

Extras can be selected as per the "Programme chart", but are not available for all drying levels.

- Touch the Extras sensor.
- Scroll through the display to see more Extras.
- Touch the sensor for the Extra you want.
- Confirm with the OK sensor.

#### DryFresh

Refreshing without steam. Tip: use the *DryFresh* fragrance flacon, reduce the load size.

#### PowerFresh

Refresh using steam. Tip: use the *DryFresh* fragrance flacon, reduce the load size.

#### DryCare 40

Gentle temperature for all fabrics that are free of wool and are washable at temperatures of 40°C and above. Tip: reduce the amount of laundry for the load.

#### Gentle tumble

Temperature protection of textiles with the care symbol .

#### Freshen up

Refreshing of damp textiles. Tip: use a fragrance flacon.

#### Quick

Shortening of the programme time, for robust fabrics .

#### Eco

Energy saving due to reduced compressor power, with an extension of the programme running time.

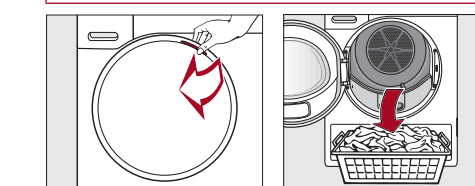
## End of the programme

### At the end of the programme

The programme is finished when Finish/Anti-crease appears in the display. The **Start/Stop** sensor will no longer light up.

- 10 minutes after the end of the programme the **Start/Stop** sensor will begin to flash slowly and the display will go out.
- The tumble dryer switches off automatically.

Do not open the tumble dryer door before the end of the programme.



- Open the door.
- Remove the laundry.

Items left in the dryer could be damaged by overdrying when the dryer is used the next time. Always remove all items from the drum.

If the dryer is switched on and the door is opened, the drum lighting will come on. The drum lighting will go out after a few minutes to save energy.

### Filling the condensed water container

For some programme applications, the condensed water container must be filled to at least the -min- mark.

- Switch the tumble dryer off with the sensor.
- Clean the fluff filters.
- Close the drum door.
- Empty the condensed water container.

#### Emptying the condensed water container

- Pull out the condensed water container.
- To prevent water running out, hold the condensed water container by the front panel and at the back to keep it in a horizontal position.
- Empty the container.
- Replace the container in the dryer.



To stop the spray jet becoming calcified, only fill with tap water in exceptional circumstances.

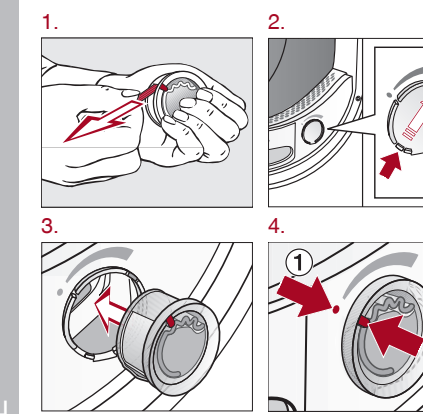
## FragranceDos

**Useful tip:** This tumble dryer has 2 sockets for inserting fragrance flacons. You can use one or both sockets to give your laundry a pleasant fragrance.

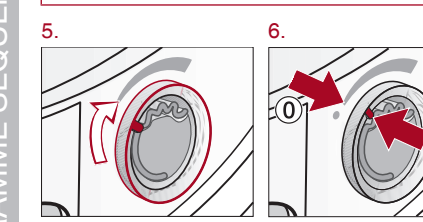
Close the unused socket.

Before using a fragrance flacon, please read "Warning and Safety instructions - Using a fragrance flacon (optional accessory)" and "Fragrance flacon" in the operating instructions.

### Inserting a fragrance flacon



Marker ② must be in position ①.



Marker ② must be in position ①.

### Setting the fragrance intensity

The further you turn the outer ring of the fragrance flacon clockwise, the more intense the fragrance.

### Closing the fragrance flacon

Turn the outer ring anti-clockwise until marker ② is in position ①.

### Removing the fragrance flacon

Turn the outer ring until marker ② is in position ①.

### Removing the fragrance flacon

Remove the fragrance flacon.

To prevent any fragrance running out of the flacon, do not lay it down on any surface.

Only store the fragrance flacon in its original packaging.



