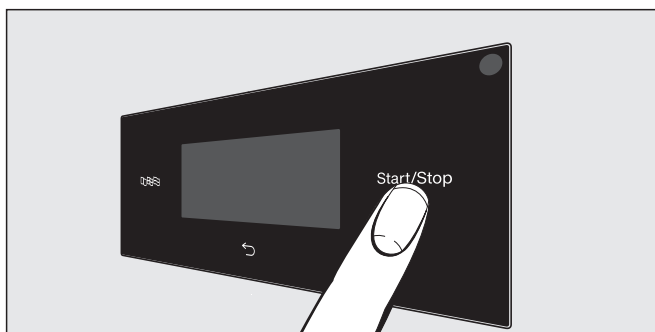
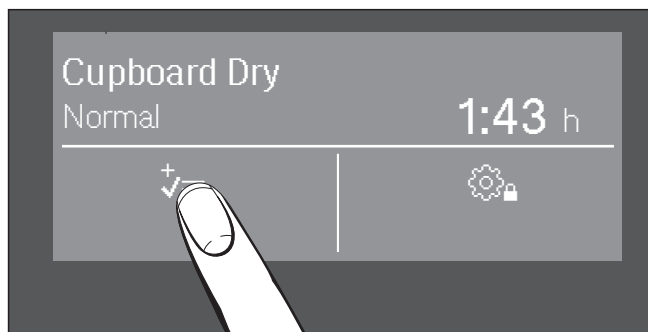


Touch display with sensor controls



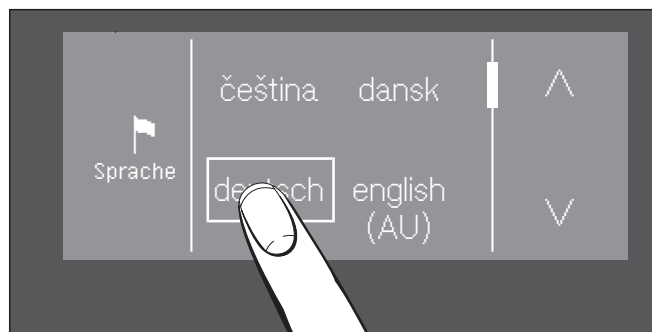
- To switch on: press the ① button. The , and *Start/Stop* sensor controls and the sensor controls in the display react to finger tip contact.



Example: Selecting extra options

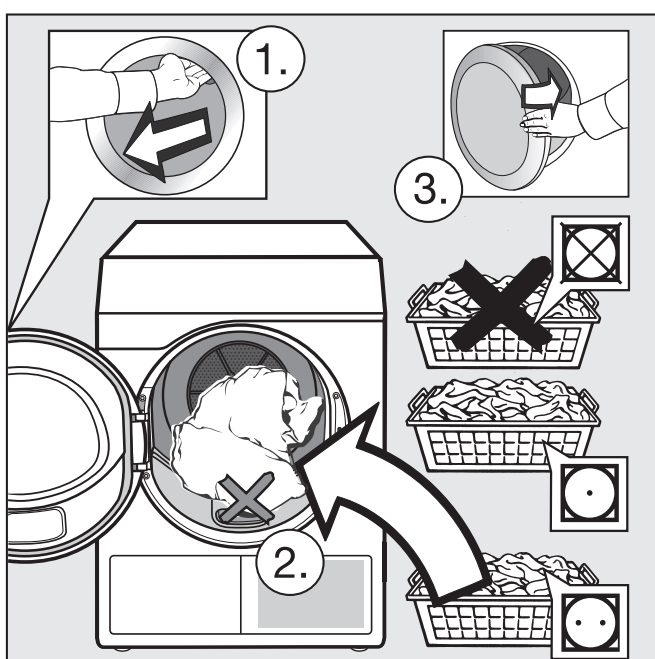
- Touch the sensor control.
- Touch the sensor control for the extra you want: and/or .

1 Select language



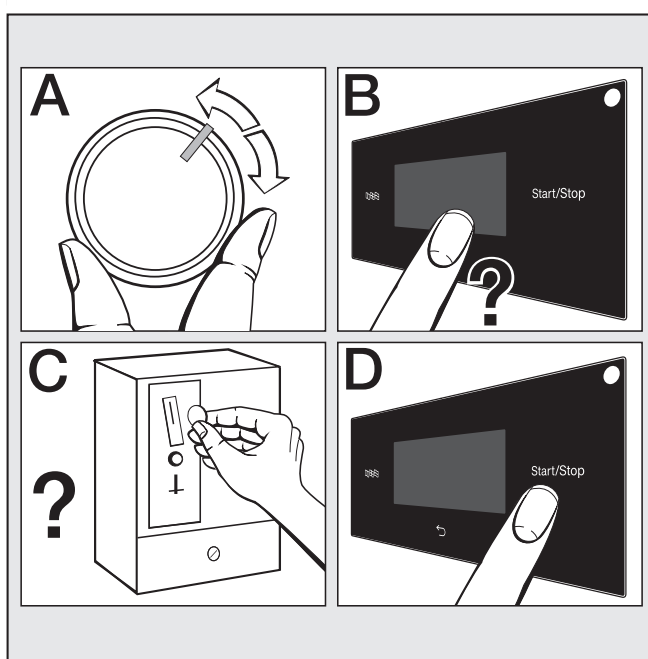
- Touch the sensor control.
- Touch the or sensor control until the language you want appears in the display.
- Select the language.

2 Sort the laundry and load the drum



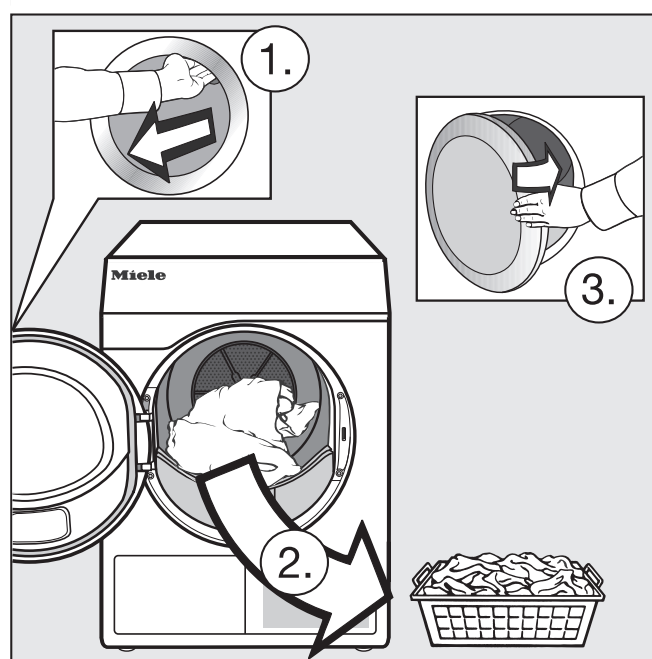
- = do not tumble dry,
- = normal/higher temperature
- = select *Low temperature*
- Load the laundry

3 Select and start the programme



- Select a programme (A).
- Select any additional programme settings (B).
- Insert payment (C).
- Touch the *Start/Stop* sensor control (D).

4 Unload the laundry



- Finish* appears in the display.
- Open the door.
- Unload the drum.

Programmes	max.*	Items / Hints / Tips		
Express Cupboard Dry	4 kg	Items suitable for the <i>Cottons</i> programme.	–	
Minimum iron + Cupboard Dry plus Cupboard Dry Hand iron	4 kg	Workwear, overalls, tops, dresses, trousers, table linen, tights – Select the <i>Automatic plus</i> programme for a mixed load (minimum iron and cottons).		
Woollens	2 kg	Tops, cardigans, wool leggings	–	–
Timed drying cool air	7 kg	Any item which only needs airing.	–	–
Timed drying warm air	7 kg	Jackets, pillows, sleeping bags, items made up of multiple layers, heavy cotton table cloths, small items of laundry – Select time: Touch – Select time with – Touch OK.		
Cottons + Cupboard Dry plus Cupboard Dry Hand iron Machine iron	7 kg	Jackets, workwear, overalls, aprons, baby clothes, t-shirts, underwear, cotton blankets, tea towels, hand towels, bath towels, towelling bathrobes, jersey bed linen, boil-proof table linen – To prevent laundry from drying out, it should be rolled up until you are ready for ironing. – For items that are 100 % towelling: select the <i>Towelling</i> programme.		
PRO Cupboard Dry	7 kg	Cotton items with normal residual moisture such as those described under <i>Cottons</i> .	–	
Large items + Cupboard Dry plus Cupboard Dry Hand iron Machine iron	7 kg	Robust, larger items for the <i>Cottons</i> programme. These include, for example, blankets, multi-layered covers, large voluminous items.	–	

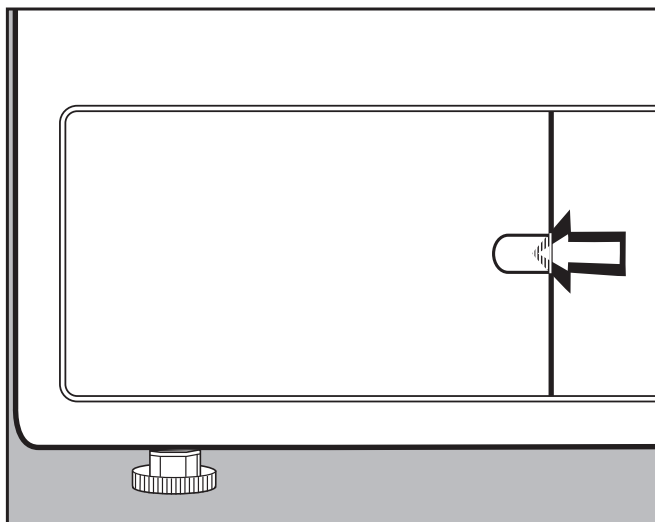
* Weight of dry laundry

Extra *Low temperature* = reduced temperature for drying.

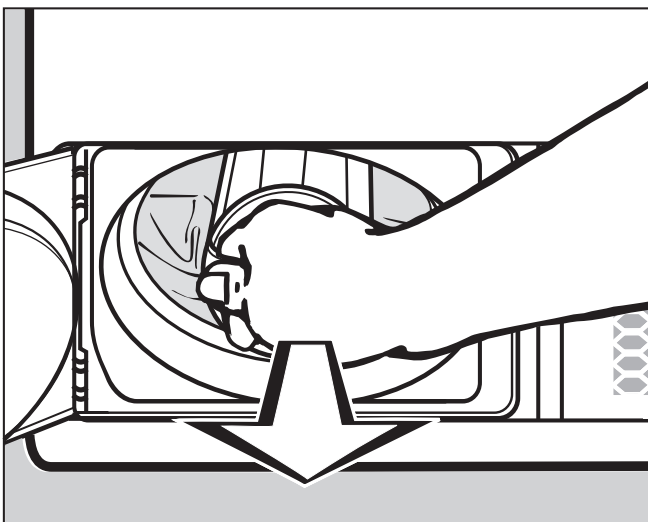
Extra *Anti-crease* (if enabled) = will reduce creasing if the laundry is not removed immediately at the end of a programme.

Tip: Have a vacuum cleaner ready

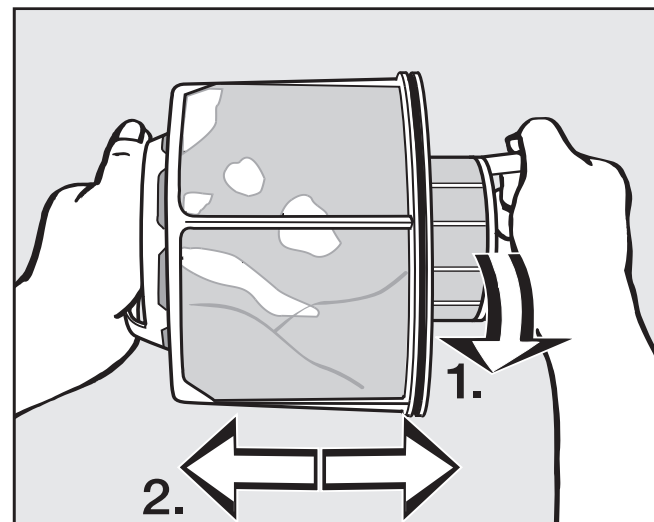
Cleaning: After drying – and whenever Clean out airways or Clean the filters appears in the display



The tumble dryer stays switched on.
 ■ Open the fluff filter flap.
 Reminder goes out after 10 seconds.

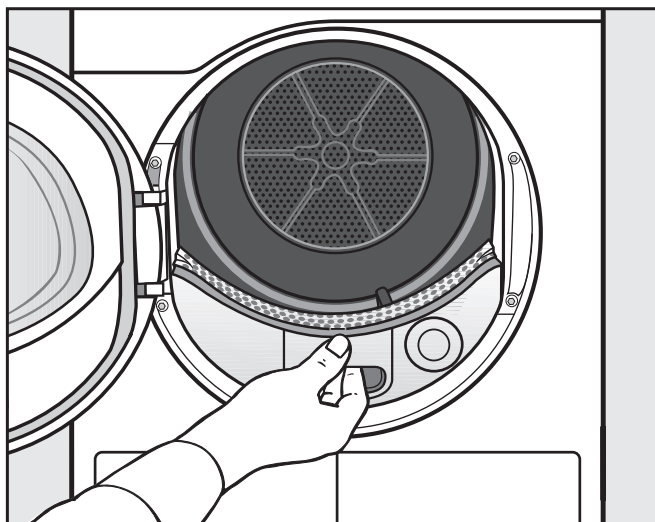


■ Remove the fluff filter.
 ■ Check the fluff filter at regular intervals for signs of wear.

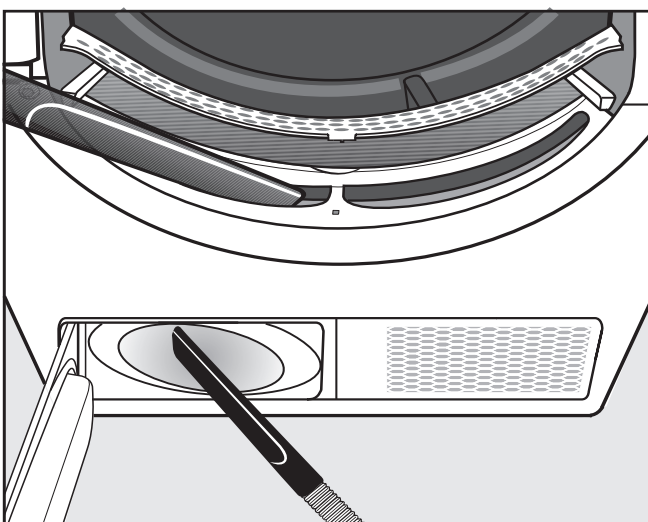


■ Take the fluff filter apart.
 ■ Remove the fluff from both sections with your fingers or with a vacuum cleaner.

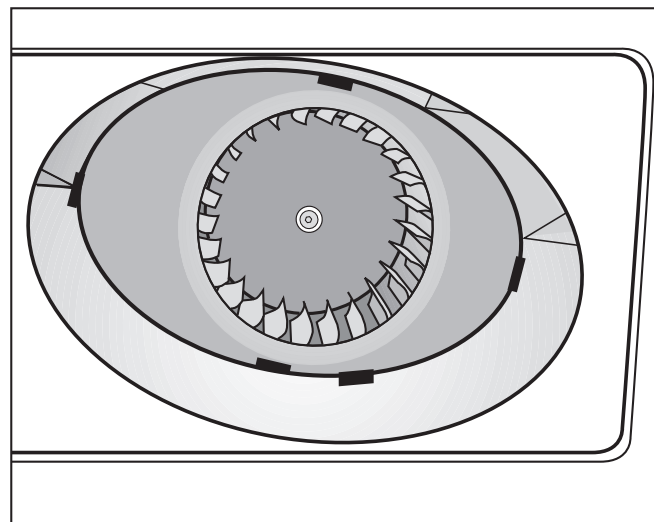
– Also check and clean if necessary



■ Remove the cover.
 ■ Use a damp cloth to remove fluff from the cover.

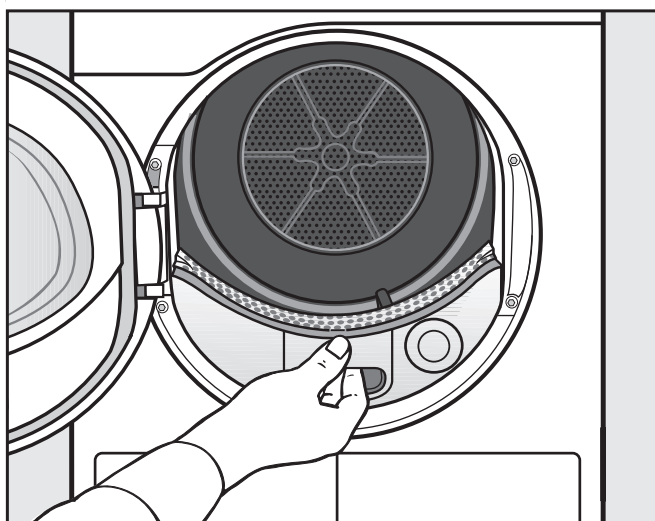


■ Use a vacuum cleaner and crevice nozzle to remove fluff.

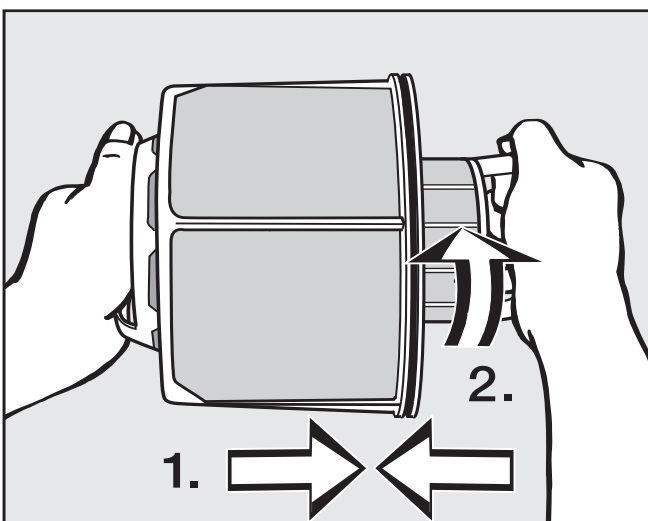


■ Carefully remove the following with a damp cleaning cloth:
 ... deposits on the fan wheel
 ... fluff from the area in front of the fan wheel

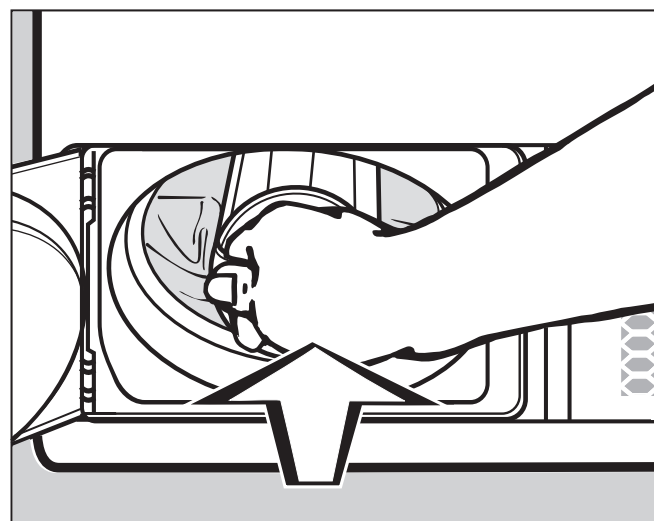
Refitting the cover and fluff filter



■ Slide in the cover.



■ Put the fluff filter back together.



■ Slide in the fluff filter.
 ■ Close the fluff filter cap.

