

## THE BENCHMARK MACHINES

**OPL** | ON-PREMISE LAUNDRY

 **Electric Heating**

**Up to 7 Years Warranty**



## PWM 909 | 20 lbs. PERFORMANCE PLUS

### FEATURES

- M Touch Pro Plus freely programmable color display
- Short program cycles
- Patented Honeycomb Drum
- 3D imbalance monitoring
- G-force of 518
- High durability: tested for 30,000 operating hours
- Safe disinfection
- Low consumption values

#### Exclusive to Miele



### Patented Honeycomb Drum

The Honeycomb drum creates a thin film of water between the drum wall and the laundry. Textiles are treated more gently. Garments keep their shape and last longer.



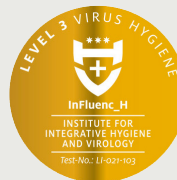
### Short Program Cycles

Premium commercial technology allows you to benefit from quick and efficient program cycles.



### EcoSpeed Patented Wash Process

The EcoSpeed washing process features an optimized drum rhythm and enhanced washing action, allowing intensive cleaning performance with reduced water usage.



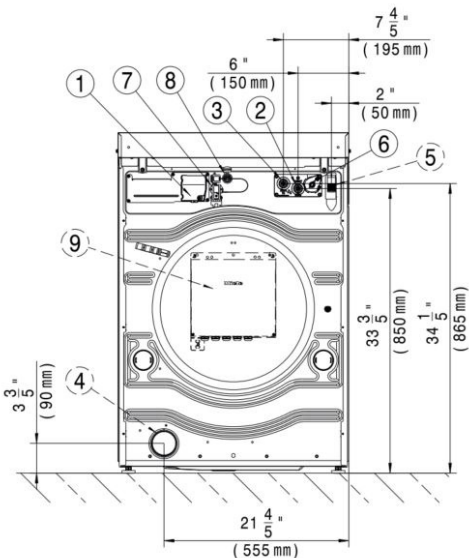
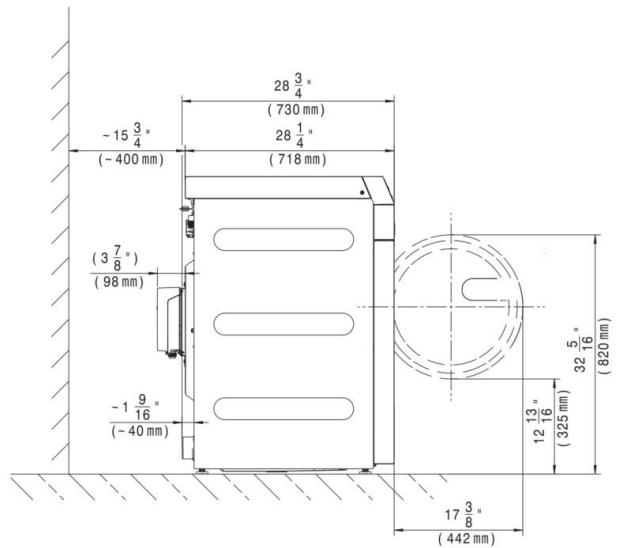
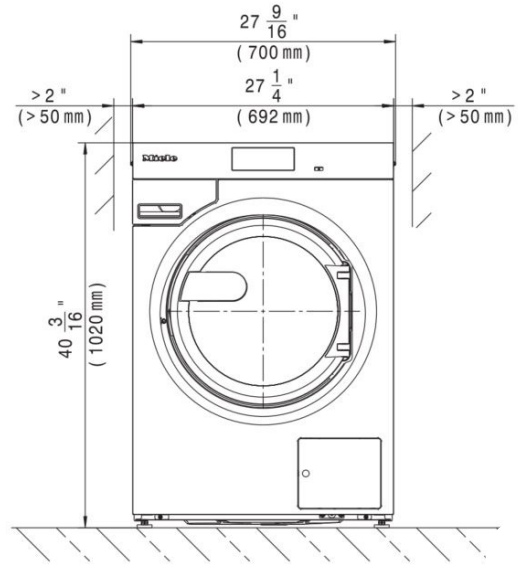
### Proven Hygiene

Our washing machines in the Benchmark series remove more than 99.9% of all viruses (including coronaviruses).

Model	Heat Type	Electrical Specification Voltage/Hz/Phase (Amp)	Color	Material No.	Article No.
PWM 909, Drain Pump	Electric	208,240/60/1 (2 x 30 A)	Iron Grey	12271880	51909034NAM
PWM 909, Drain Valve	Electric	208,240/60/1 (2 x 30 A)	Iron Grey	12271900	51909035NAM

## Specifications

Capacity	20 lbs. (9 kg)
Cylinder Diameter	21 <sup>9</sup> / <sub>16</sub> in. (548 mm)
Cylinder Depth	12 <sup>1</sup> / <sub>4</sub> in. (312 mm)
Cylinder Volume	2.8 cu.ft. (80 l)
Machine Dimensions (WxDxH)	27 <sup>9</sup> / <sub>16</sub> x 28 <sup>3</sup> / <sub>4</sub> x 40 <sup>3</sup> / <sub>16</sub> in. (700 x 730 x 1,020 mm)
Door Opening	14 <sup>9</sup> / <sub>16</sub> in. (370 mm)
Floor to Door	12 <sup>13</sup> / <sub>16</sub> in. (326 mm)
Reversible Door	No
Shipping Dimensions (WxDxH)	29 <sup>1</sup> / <sub>2</sub> x 32 <sup>3</sup> / <sub>16</sub> x 47 <sup>13</sup> / <sub>16</sub> in. (750 x 817 x 1,214 mm)
Net Weight	340 lbs. (155 kg)
Crated Weight	357-368 lbs. (162-167 kg)
Wash Speed	46 rpm
Extract Speed	1,300 rpm
G-force	518
Water Inlets	2 x 3/4 in. (203 x 19 mm)
Drain Diameter Drain Pump	7/8 in. (22 mm)
Drain Diameter Drain Valve	2 <sup>3</sup> / <sub>4</sub> in. (70 mm)
Recommended Water Pressure	14.5-145 psi
Water Flow Drain Pump	6.9 gal/min. (261 l/min.)
Water Flow Drain Valve	52.8 gal/min. (200 l/min.)
Min. Recommended Distance Between Machines	2 in. (50 mm)
Plug/connection cable	NEMA plug: Twist Lock L6-30
Agency Approvals	Intertek



Heating	Voltage (Voltage/Hz/Phase)	Wire	Circuit Breaker Amps	Running Amps	Total Power (kW)
Electric	208, 240/60/1	2 Wire + Ground	30	22.4	5.2

Specifications subject to change without notice or obligation.  
Contact Miele USA at (800) 991-9380 or Miele Canada at (888) 325-3957 for dimensions not shown or for clarification.