

THE BENCHMARK MACHINES





PDR 922 | 50 lbs. PERFORMANCE PLUS

Features

- Programmable controls
- Short program cycles
- Patented Honeycomb Drum
- PerfectDry system – residual moisture sensors
- Intelligent dryers – gentle and uniform
- Perfect anti-crease
- Economical and efficient
- LAN/WiFi capable (accessory required)

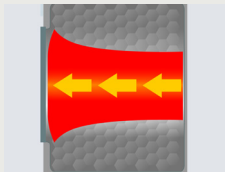
OPL ON-PREMISE LAUNDRY

 **Steam Indirect**

 **Hot Water Heating**

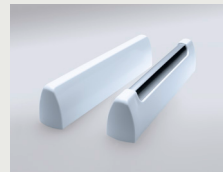
 **Electric Heating**

Up to 7⁺ Years Warranty



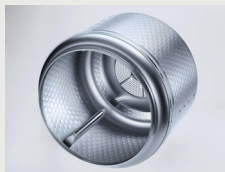
Axial airflow

For perfect drying results, air is passed through the drum according to the principle of longitudinal air flow.



SoftLift drum ribs ensure gentle fabric care

The SoftLift drum ribs allow laundry to be dried gently and evenly.



Honeycomb Drum

Less folding, easy finishing: laundry is dried very gently and evenly in the Honeycomb Drum.



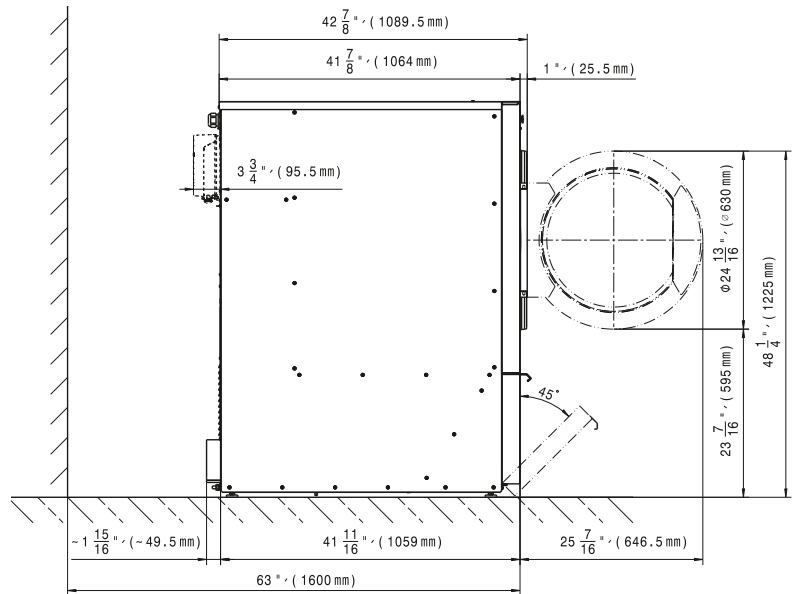
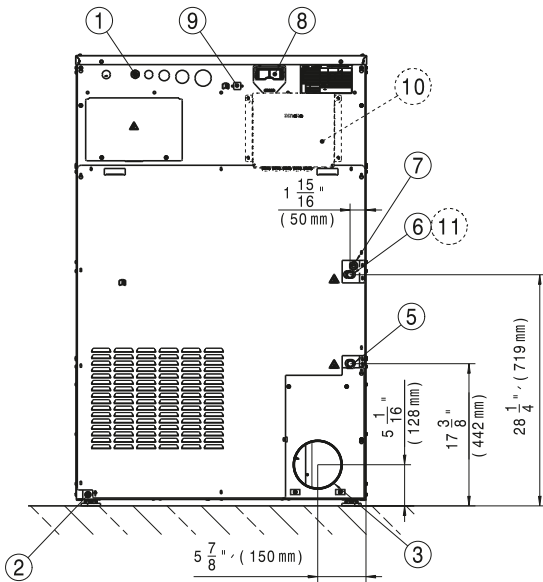
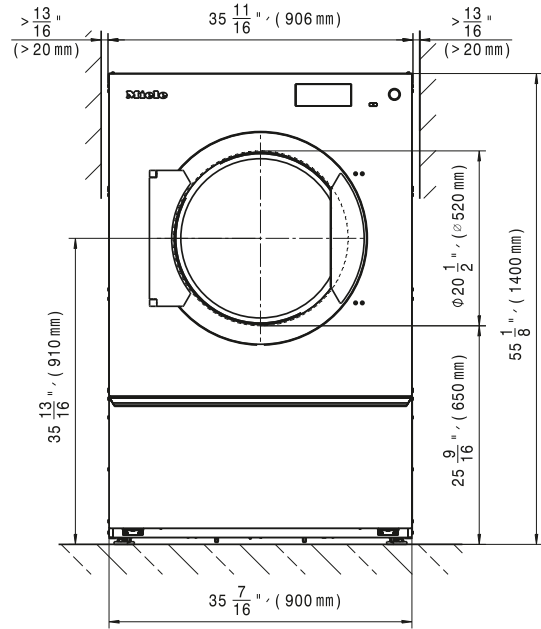
Large fluff filter

The very large filter surface is particularly easy to clean.

Model	Heat Type	Electrical Specification Voltage/Hz/Phase (Amp)	Color	Material No.	Article No.
PDR 922	Steam	208, 240/60/1 (2 x 15 A)	Iron Grey	12012300	52922028NAM
PDR 922	Steam	208, 240/60/1 (2 x 15 A)	Stainless Steel	12012290	52922027NAM
PDR 922	Hot Water	208, 240/60/1 (2 x 15 A)	Stainless Steel	12012310	52922029NAM
PDR 922	Electric	208, 240/60/3 (3 x 70 A)	Stainless Steel	12012280	52922025NAM

Specifications

Capacity	50 lbs. (22.5 kg)
Cylinder Diameter	33 ^{7/16} in. (850 mm)
Cylinder Depth	29 ^{1/16} in. (742 mm)
Cylinder Volume	14.13 cu.ft. (400 l)
Machine Dimensions (WxDxH)	35 ^{11/16} x 45 ^{3/4} x 55 ^{1/8} in. (906 x 1,162 x 1,400 mm)
Door Opening	20 ^{1/2} in. (520 mm)
Floor to Door	23 ^{7/16} in. (595 mm)
Reversible Door	Yes
Shipping Dimensions (WxDxH)	42 ^{15/16} x 49 ^{3/8} x 60 ^{1/16} in. (1,090 x 1,254 x 1,526 mm)
Net Weight EL Steam	439 lbs. (199 kg) 512 lbs. (232 kg)
Crated Weight EL Steam	470 lbs. (213 kg) 543 lbs. (246 kg)
Steam Inlets (Steam version)	2 x 1/2 in. (51 x 13 mm)
Hot Water Inlets (HW version)	2 x 1/2 in. (51 x 13 mm)
Flow Rate Operating Range (HW version)	1.3-6.6 gal/min. (0.3-1.5 m3/h)
Hot Water Return (HW version)	1/2 in. (13 mm)
Recommended Water Pressure	87-145 psi
Min. Recommended Distance Between Machines	13/16 in. (20 mm)
Agency Approvals	Intertek



Heating	Voltage (Voltage/Hz/Phase)	Wire	Circuit Breaker Amps	Running Amps	Total Power (kW)
Steam	208, 240/60/1	2 Wire + Ground	15	7	1
Hot Water	208, 240/60/1	2 Wire + Ground	15	7	1
Electric	208, 240/60/3	3 Wire + Ground	70	51.2	20.2

Specifications subject to change without notice or obligation.
Contact Miele USA at (800) 991-9380 or Miele Canada at (888) 325-3957 for dimensions not shown or for clarification.