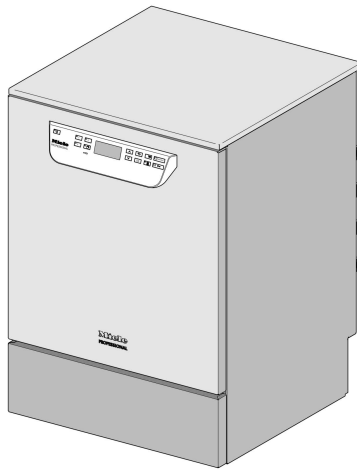


# Miele



## Installation plan

### PG 8063

---

To avoid the risk of accidents or damage to the machine, it is **essential** to read these instructions as well as the service documents before it is installed, commissioned and used for the first time.

en - GB, IE, AU, NZ

M.-Nr. 11 486 561

## Installation notes

---

<b>Installation requirements</b>	<p>This machine must be installed by a <b>suitably qualified person with the appropriate electrical and plumbing qualifications</b> in accordance with the installation instructions supplied.</p> <p>This machine must be installed in accordance with all applicable standards and guidelines, including legal requirements and health and safety regulations.</p> <p>This machine must be <b>commissioned</b> and operatives trained in its use by Miele Service or by an approved Miele Service Partner only.</p>
<b>Environmental requirements</b>	<p><b>Condensate</b> can build up in the area surrounding the machine. Any furniture and fittings in the room must therefore be suitable for purpose.</p>
<b>Electrical connection</b>	<p>Connection to the electrical supply must be carried out in accordance with local and national safety regulations. The power cord must be protected from the risk of thermal damage.</p> <p>It is recommended to make electrical connection via a <b>plug and socket</b> so that electrical safety checks can be carried out easily.</p> <p>For <b>hard-wired</b> machines, connection must be via a main switch to be provided on site, which must completely isolate the machine from the power supply with a contact gap of at least 3 mm.</p> <p>The plug and socket as well as the main switch must be easily accessible after the machine has been installed.</p> <p><b>Faulty components must only be replaced by genuine Miele original spare parts.</b> Only when these parts are fitted can the safety standards of the machine be guaranteed. If the connection cable is faulty it must only be <b>replaced by a Miele approved service</b> technician to protect the user from danger.</p>
<b>Equipotential bonding and earthing</b>	<p>For added safety the machine should be protected with a <b>residual current device</b> with trip current of 30 mA.</p> <p><b>Equipotential bonding</b> should be carried out if required. A screw connection for equipotential bonding is provided at the back of the machine. Equipotential bonding and earthing must be completed before the machine is commissioned.</p>
<b>Plumbing</b>	<p>This machine can be connected directly to a cold water supply or a hot water supply using the supplied double check valves or to a demineralised water supply. If a hot water supply is not available, both inlet hoses (KW/WW) must be connected to the cold water supply with a <b>Y-connector</b>. The stopcocks must be easily accessible.</p>

### **Liquid agents: position of external containers**

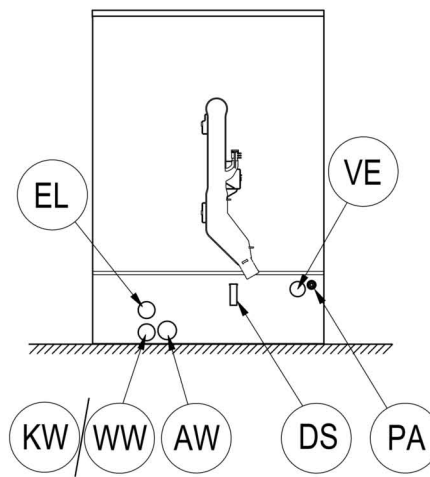
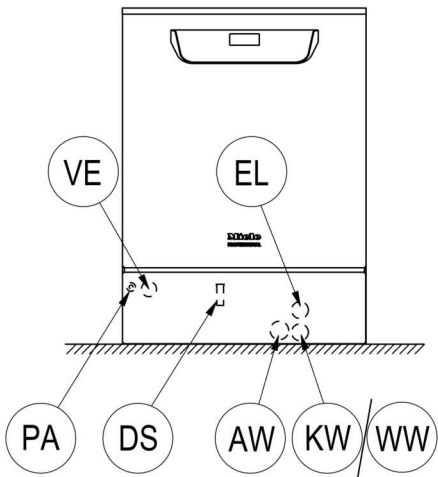
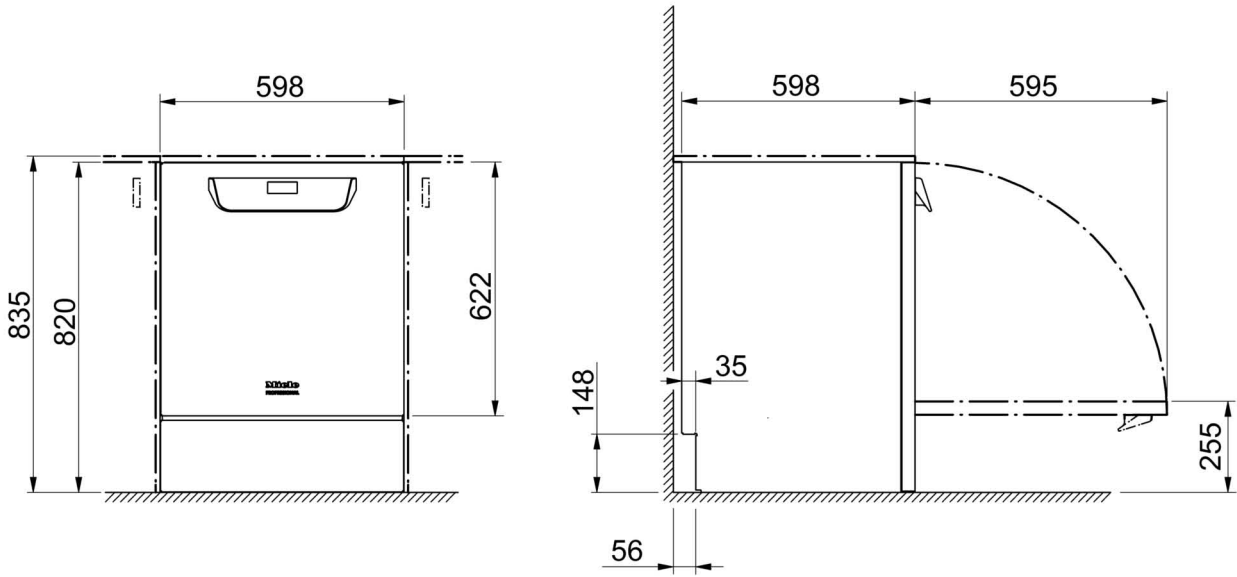
The liquid agent container for external dispensing must be positioned either **next to or underneath** the machine only. The container may be placed on the floor or in an adjacent cabinet. Do not place the container on top of or above the machine. Make sure that the dispensing hose does not get kinked or trapped.

### **Compressed air**

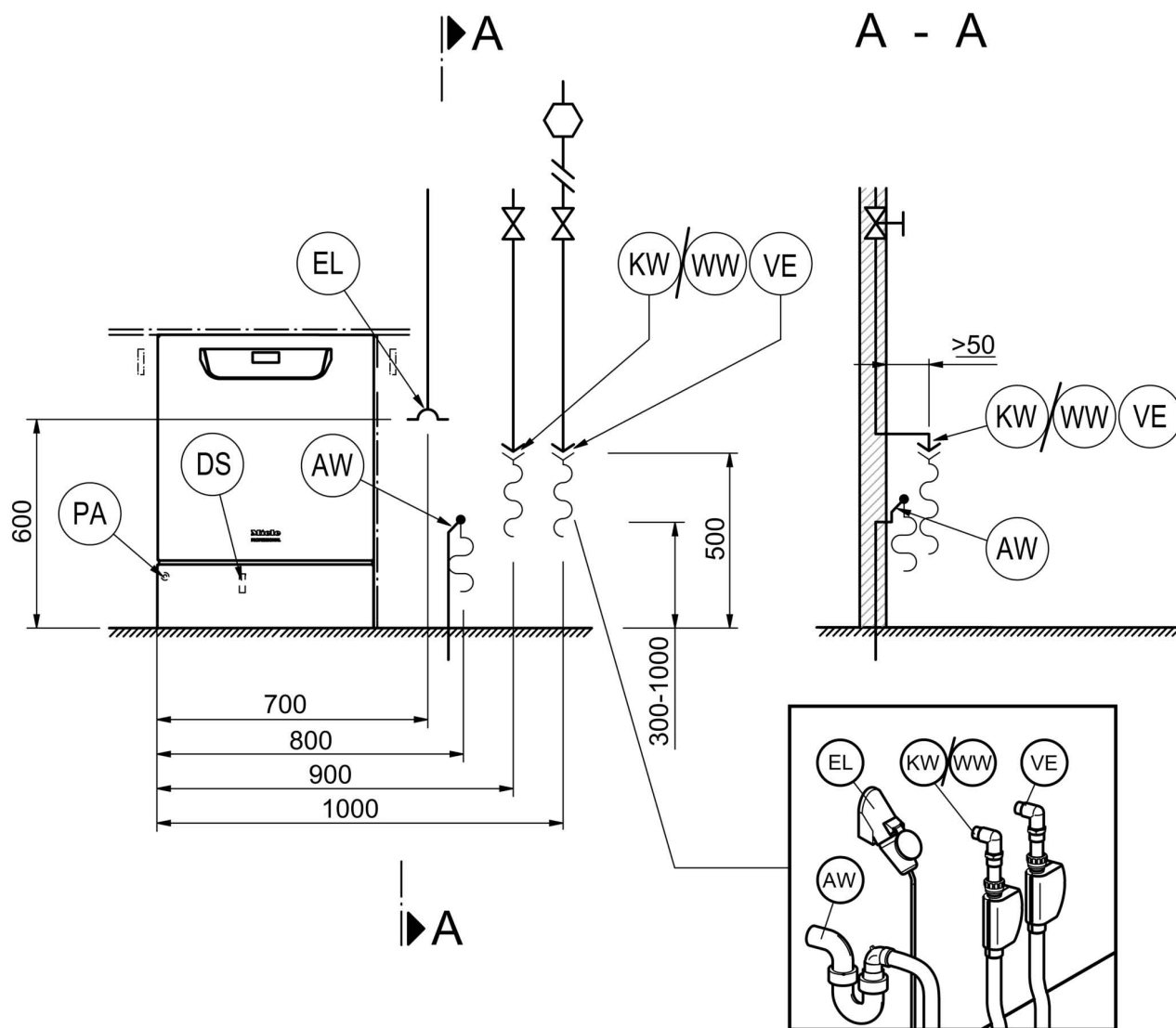
A flexible compressed air connection must be provided on-site for re-processing air regulators. The air quality must comply with the specifications issued by the manufacturer of the breathing apparatus. The pressure must be at least 400 kPa and should not exceed 600 kPa. The compressed air connection must be equipped with one of the following quick-release couplings:

- CEJN series 341
- Parker Rectus series 25S

# Figures



KW	Cold water connection	EL	Electrical connection
WW	Hot water connection	DK	Cold water connection, steam condenser
VE	DI water connection	DS	Dispensing system
AW	Drain connection	PA	Equipotential bonding

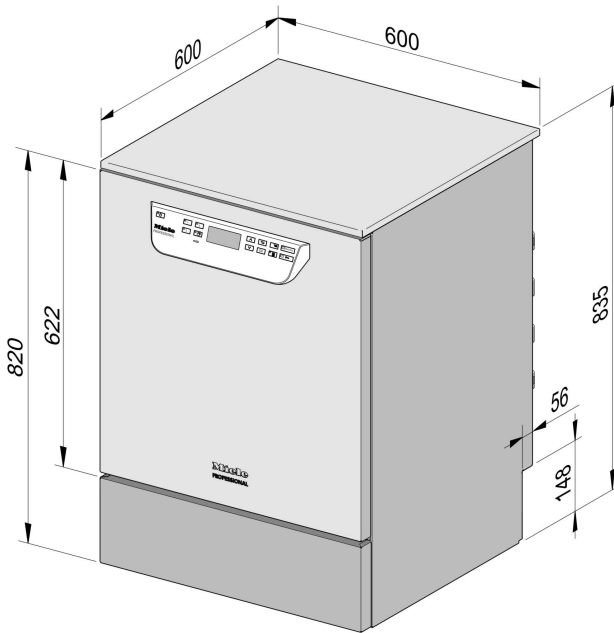


KW	Cold water connection	EL	Electrical connection
WW	Hot water connection	DK	Cold water connection, steam condenser
VE	DI water connection	DS	Dispensing system
AW	Drain connection	PA	Equipotential bonding

# Figures

---

## Machine version



PG 8063

## Electrical connection

Voltage	3N AC 400/50
Power rating	9.2 kW
Fuse rating	3 x 16 A
Mains connection cable, min. cross-section	5 x 2.5 mm <sup>2</sup>
Length of connection cable	1.8 m

Voltage	AC 230V/50Hz
Power rating	5.9 kW
Fuse rating	1 x 30-32 A
Mains connection cable, min. cross-section	3 x 4 mm <sup>2</sup>
Length of connection cable	1.8 m

Voltage	AC 230V/50Hz
Power rating	2.9 kW
Fuse rating	1 x 13-16 A
Mains connection cable, min. cross-section	3 x 1.5 mm <sup>2</sup>
Length of connection cable	1.8 m

## Cold water

Maximum temperature	20 °C
Max. permitted water hardness	12.6 mmol/l
	70 °dH
Recommended flow pressure	200 kPa
Minimum flow pressure with extended water intake	100 kPa
Maximum pressure	1,000 kPa
Flow rate	7.5 l/min
On-site threaded union in accordance with DIN 44991 (flat sealing)	3/4 inch
Length of cold water inlet hose	1.7 m

## Hot water

Maximum temperature	60 °C
Max. permitted water hardness	12.6 mmol/l
	70 °dH
Recommended flow pressure	200 kPa
Minimum flow pressure with extended water intake	40 kPa
Maximum pressure	1,000 kPa
Flow rate	7.5 l/min
On-site threaded union in accordance with DIN 44991 (flat sealing)	3/4 inch
Length of hot water inlet hose	1.7 m

## Technical data

---

### Demineralised water

Maximum temperature	60 °C
Recommended flow pressure (DI pressure-resistant)	200 kPa
Minimum flow pressure with extended water intake	30 kPa
Maximum pressure (AD pressure resistant)	1,000 kPa
Flow rate	7.5 l/min
On-site threaded union in accordance with DIN 44991 (flat sealing)	3/4 inch
Length of demineralised water inlet hose	1.7 m

**Machines with a feed pump for demineralised water (ADP) are only suitable for connection/use with a non-pressurised system.**

Minimum flow pressure with extended water intake	8.5 kPa
Maximum pressure (AD unpressurised)	60 kPa
Machine connection nipple (outer diameter x l)	6 x 30 mm

### Waste water

Waste water temperature	60 °C
Drain hose length, standard	1.4 m
Drain hose, max. drainage length	4.0 m
Max. drain pump delivery head from bottom edge of appliance	1.0 m
Max. transient flow rate	16 l/min
On-site sleeve for drain hose (dia. x length)	22 x 30 mm

### Machine foot

Height-adjustable machine foot	0 - 60 mm
Diameter of machine foot	35 mm
Connector for machine feet, size of thread	M 8

### Machine data

Building-under height	820 mm
Height including lid	835 mm
Width	598 mm
Depth	598 mm
Door height	622 mm
Net weight	72 kg
Floor load in operation	1,200 N
Min. access width, incl. transport pallet	670 mm
Min. access depth, incl. transport pallet	740 mm
Min. access height, incl. transport pallet	920 mm
Noise level in dB (A) Sound pressure LpA during cleaning and drying	< 70 dB



### Heat dissipation rate to installation site

From heat radiation during operation	0.35 kWh
From load items whilst unloading	0.40 kWh

### Ambient conditions

Permissible ambient operating temperature	5 - 40 °C
Max. relative humidity up to 31 °C	80 %
Rel. humidity, declining proportionally to 40 °C	50 %
Transport conditions – permitted temperature range	-20 - 60 °C
Transport conditions – permitted relative humidity	10 - 85 %
Transport conditions – permitted air pressure	500 - 1060 hPa
Max. installation altitude above sea level	2,000 m





## United Kingdom

Miele Co. Ltd., Fairacres, Marcham Road  
Abingdon, Oxon, OX14 1TW  
Professional Sales, Tel: 0845 365 6608  
E-mail: professional@miele.co.uk  
Internet: www.miele.co.uk/professional

## Australia

Miele Australia Pty. Ltd.  
ACN 005 635 398, ABN 96 005 635 398  
Level 4, 141 Camberwell Road, Hawthorn East, VIC 3123  
Tel: 1300 731 411  
Internet: www.miele.com.au/professional  
E-mail: professional.sales@miele.com.au

## China Mainland

Miele Electrical Appliances Co. Ltd.  
No. 82, Shimenyi Road, JingAn District,  
Shanghai, China, P.R.C, Post Code: 200040  
Phone: +86 21 6157 3500, Fax: +86 21 6157 3511  
E-mail: info@miele.cn, Internet: www.miele.cn

## Hong Kong, China

Miele (Hong Kong) Ltd.  
41/F - 4101, Manhattan Place  
23 Wang Tai Road, Kowloon Bay, Hong Kong  
Tel: (852) 2610 1025, Fax: (852) 3579 1404  
Email: customerservices@miele.com.hk  
Website: www.miele.hk

## India

Miele India Pvt. Ltd.  
1st Floor, Copia Corporate Suites,  
Commercial Plot 9, Mathura Road, Jasola,  
New Delhi - 110025  
E-mail: customercare@miele.in, Website: www.miele.in

## Ireland

Miele Ireland Ltd.  
2024 Bianconi Ave., Citywest Business Campus,  
Dublin 24  
Tel: (01) 461 07 10, Fax: (01) 461 07 97  
E-Mail: info@miele.ie, Internet: www.miele.ie

## Malaysia

Miele Sdn Bhd  
Suite 12-2, Level 12  
Menara Sapura Kencana Petroleum  
Solaris Dutamas No. 1, Jalan Dutamas 1  
50480 Kuala Lumpur, Malaysia  
Phone: +603-6209-0288  
Fax: +603-6205-3768

## New Zealand

Miele New Zealand Limited  
IRD 98 463 631  
8 College Hill  
Freemans Bay, Auckland 1011, NZ  
Tel: 0800 464 353  
Internet: www.miele.com.au/professional  
E-mail: professional.sales@miele.com.au

## Singapore

Miele Pte. Ltd.  
29 Media Circle, #11-04 ALICE@Mediapolis  
Singapore 138565  
Tel: +65 6735 1191, Fax: +65 6735 1161  
E-Mail: info@miele.com.sg  
Internet: www.miele.sg

## South Africa

Miele (Pty) Ltd  
63 Peter Place, Bryanston 2194  
P.O. Box 69434, Bryanston 2021  
Tel: (011) 875 9000, Fax: (011) 875 9035  
E-mail: info@miele.co.za  
Internet: www.miele.co.za

## United Arab Emirates

Miele Appliances Ltd.  
Showroom 1, Eiffel 1 Building  
Sheikh Zayed Road, Umm Al Sheif  
P.O. Box 114782 - Dubai  
Tel. +971 4 3044 999, Fax. +971 4 3418 852  
800-MIELE (64353)  
E-Mail: info@miele.ae  
Website: www.miele.ae



Manufacturer: Miele & Cie. KG, Carl-Miele-Straße 29, 33332 Gütersloh, Germany