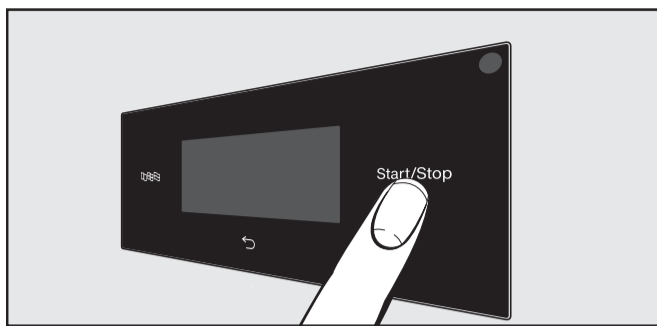
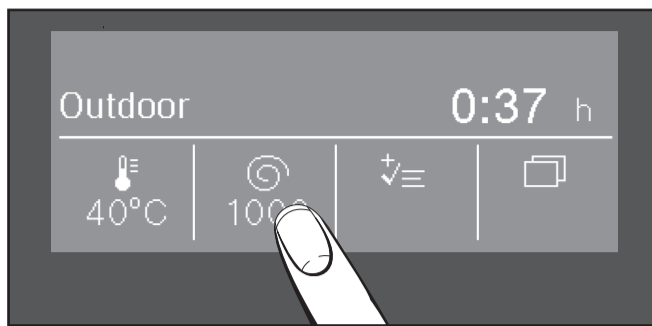


⚠ It is a mandatory requirement to read the operating instructions and pay particular attention to the warnings and safety instructions.

Touch display and sensor controls

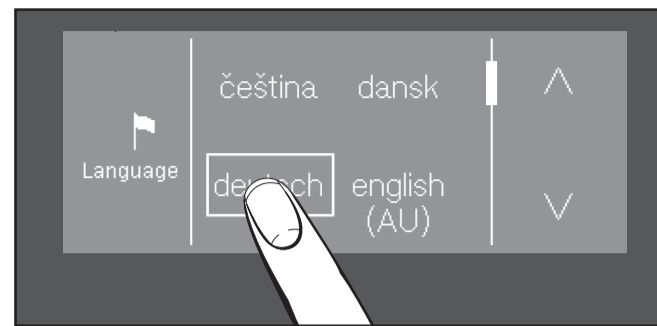


- To switch on: press the **⏻** button. The **🔊**, **↶** and **Start/Stop** sensor controls and the sensor controls in the display react to finger tip contact.



You can change the temperature, spin speed or Extras by touching the **🌡**, **🌀** and **⚙** sensor controls.

1 Selecting the language



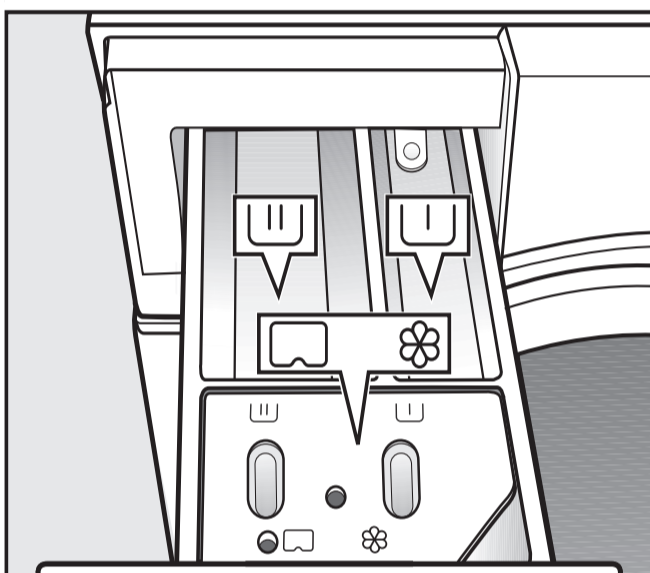
- Touch the **🔊** sensor control.
- Touch the **^** or **v** sensor control until the language you want appears in the display.
- Select the language.

2 Loading the laundry



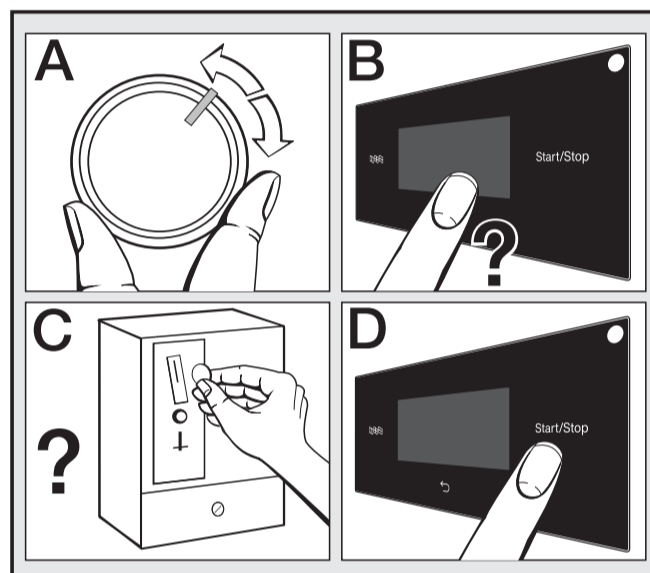
- Open the door.
- Load the laundry, sorted by colour and care label.
- Shut the door with a gentle swing. Do not trap items in the door.

3 Adding detergent



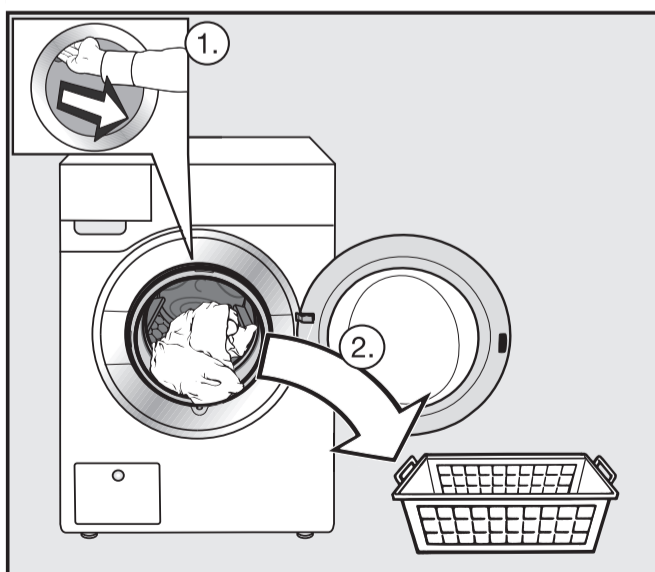
- 🧴** Detergent for the pre-wash.
- 🧴** Detergent for the main wash.
- 🌸/🗂** Fabric softener, liquid starch or capsules.

4 Selecting and starting the programme



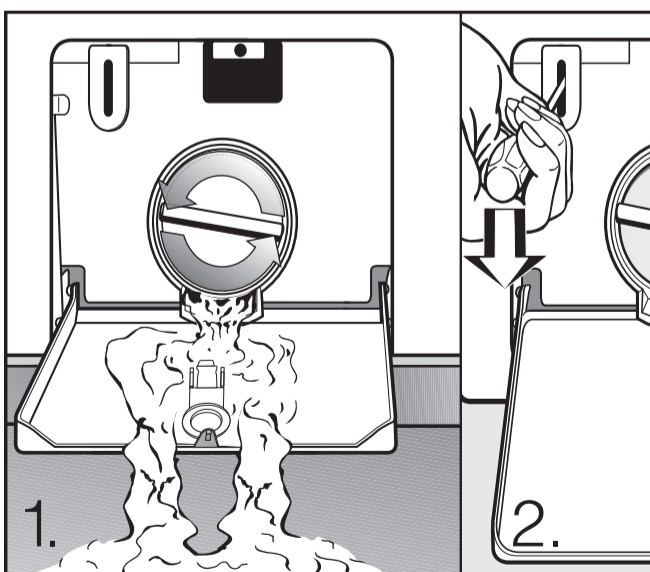
- Select a programme (A).
- Select the temperature, spin speed and Extras (B).
- Insert payment (C).
- Touch the **Start/Stop** sensor control (D).

5 Unloading the laundry



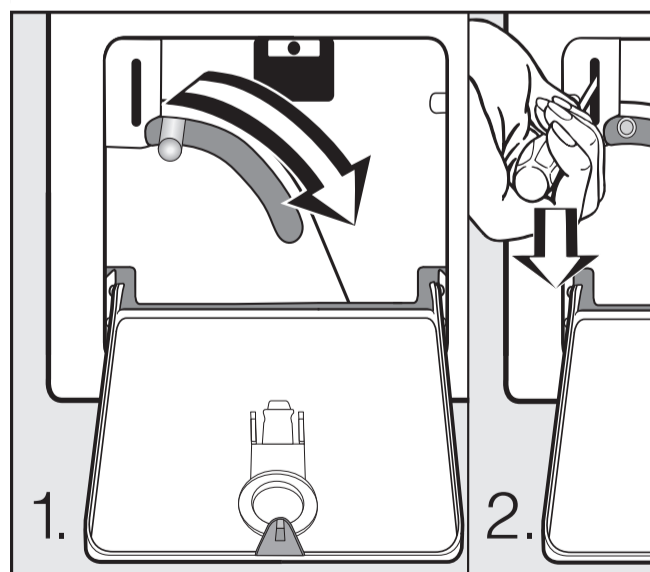
- Anti-crease/Finish* appears on the display.
- Release the door with the **Start/Stop** sensor control.
 - Open the door and remove the laundry.

Opening the door in the event of a power failure ... Drain pump





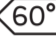





- Open the access panel to the drain system.
- Allow the water to drain off. Be careful: the water may be hot.
- Release the door with a screwdriver.

Opening the door in the event of a power failure ... Drain valve



- Open the access panel to the drain system.
- Allow the water to drain off.
- Release the door with a screwdriver.

| Programme | | Load |
|--|--|--------------------|
|  Cottons 20 °C to 90 °C | | max. 8.0 kg |
| Items | Cotton, linen and mixed fibre textiles. | |
| Tip | <ul style="list-style-type: none"> – Select the temperature according to the instructions on the care label, the detergent, the type of soiling and the hygiene requirements. – For dark-coloured fabric, use a colour detergent or liquid detergent. | |
|  Cottons Eco  /  | | max. 8.0 kg |
| Items | Normally soiled cotton items. | |
| Tip | <ul style="list-style-type: none"> – These settings are the most efficient in terms of energy and water consumption for washing cottons. With , the wash temperature reached is below 60 °C. | |
|  Express 30 °C | | max. 3.5 kg |
| Items | Cotton garments that have hardly been worn or are only very lightly soiled. | |
|  Minimum iron 30 °C to 40 °C | | max. 4.0 kg |
| Items | Synthetic and mixed fibre textiles as well as easy care cotton. | |
| Tip | <ul style="list-style-type: none"> – Reduce the spin speed for fabric that creases easily. | |
|  Delicates 30 °C | | max. 3.0 kg |
| Items | Delicate garments made from synthetic fibre, mixed fibre and viscose. | |
| Tip | <ul style="list-style-type: none"> – Wash textiles containing wool or silk in the Woollens or Silks programme. – Deselect the spin speed for fabric that creases easily. – Use detergent for delicates. | |
| ECO 40-60 | | max. 8.0 kg |
| Items | Normally soiled cotton garments. | |
| Tip | <ul style="list-style-type: none"> – A laundry load consisting of mixed cottons that are intended for washing at 40 °C or 60 °C can be washed in the same wash cycle. – This programme is the most efficient in terms of energy and water consumption for washing cottons. | |
| Towelling 40 °C to 60 °C | | max. 8.0 kg |
| Items | Towels and bathrobes made from terrycloth. | |
| Tip | <ul style="list-style-type: none"> – For dark-coloured fabric, use a colour detergent or liquid detergent. | |
| Shirts 20 °C to 60 °C | | max. 3.0 kg |
| Items | Shirts and blouses. | |
| Tip | <ul style="list-style-type: none"> – Wash silk shirts and blouses in the Silks programme. – Reduce the maximum load size by half if you have selected the <i>Pre-ironing Extra</i>. | |
| Dark garments 30 °C to 60 °C | | max. 4.0 kg |
| Items | Black and dark items made from cotton or mixed fibres. | |
| Tip | <ul style="list-style-type: none"> – Wash inside out. – Use colour detergents. | |
| Woollens cold to 30 °C | | max. 3.0 kg |
| Items | Machine-washable woollens and woollen blends. | |
| Tip | <ul style="list-style-type: none"> – Use detergent formulated for woollens. | |

The list represents only a selection of possible programmes. Further programmes are described in the operating instructions.

