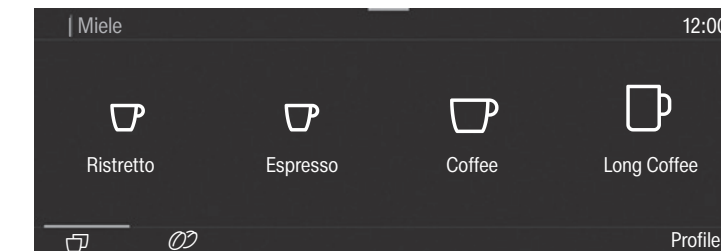


## Operation

### Touchdisplay



<b>Selecting/Accessing a menu</b>	Touch the desired entry or value in the display.
<b>Scrolling</b>	Swipe across the screen. To do this, place a finger on the touch display and swipe it in the direction you want.
<b>Exiting a menu level</b>	Tap $\rightarrow$ . Alternatively, tap the higher-level menu name within the menu path. Entries made before this which have not been confirmed with <i>OK</i> will <b>not</b> be saved.
<b>Entering numbers</b>	You can enter numbers by scrolling through and touching the roller, or by using the numeric keypad. <b>Number roller:</b> Swipe the roller up or down until the value you want is displayed centrally in orange. Confirm with <i>OK</i> . <b>Numerical keypad:</b> Touch the orange colored value in the center and keep your finger on it until the numerical keypad appears. Select the value you want: As soon as you enter a valid value, <i>OK</i> turns green. Use the $\leftarrow$ arrow to delete the last entered number. Confirm with <i>OK</i> .
<b>Entering letters</b>	Names are entered using a keyboard. It is best to select short, memorable names. Tap the letters or characters you want. Tap <i>Save</i> .
<b>Displaying the context menu</b>	When you are in certain menus, a context menu can be displayed, e.g., for configuring drinks. For instance, you can tap the name of a drink and keep your finger on it until the context menu opens. To close the context menu, touch an area of the display located outside of the menu window.
<b>Help display</b>	Context-sensitive help is available for certain functions. Help is shown in the display. Tap <i>Help</i> to display information in text and pictures.

## Drinks overview

### Coffee drinks

- **Ristretto** is a concentrated, stronger espresso. It is prepared with the same amount of coffee as for an espresso but with a lot less water.
- **Espresso** is a strong aromatic coffee with a thick, hazelnut-brown colored froth – known as the crema – on top.
- **Coffee** differs from espresso by the increased amount of water and the roast of the beans.
- **Lungo** is a coffee with significantly more water.
- **Long black** is made with hot water and two shots of espresso.
- **Caffè Americano** consists of equal proportions of espresso and hot water. The espresso is made first, then the hot water is dispensed.

### Coffee drinks made with milk

- **Cappuccino** consists of approx. 2 thirds milk froth and 1 third espresso.
- **Latte macchiato** consists of 1 third each of hot milk, milk froth, and espresso.
- **Caffè latte** consists of espresso and hot milk.
- **Cappuccino Italiano** has the same proportions of milk froth and espresso as a cappuccino. The difference is that the espresso is added first and then the milk froth.
- **Espresso macchiato** is an espresso with a small amount of milk froth on top.

- **Flat white** is a special variety of cappuccino that contains significantly more espresso than milk froth for an intensive coffee aroma.
- **Café au lait** is a French style of coffee consisting of coffee and milk froth. Café au lait is usually served in a bowl.

### Tea drinks

- (hot water at the optimum temperature)
- White tea
  - Japanese tea
  - Green tea
  - Herbal tea
  - Fruit tea
  - Black tea
  - **Chai Latte** is a tea speciality with milk.

### Other drinks

- Hot milk
- Milk froth
- Hot water
- Warm water

### Pot function

- (3 to 8 cups can be selected)
- Coffee pot
  - Teapot for all types of tea

Your coffee machine may be different from the illustrations in the Quick Start Guide, depending on the model.

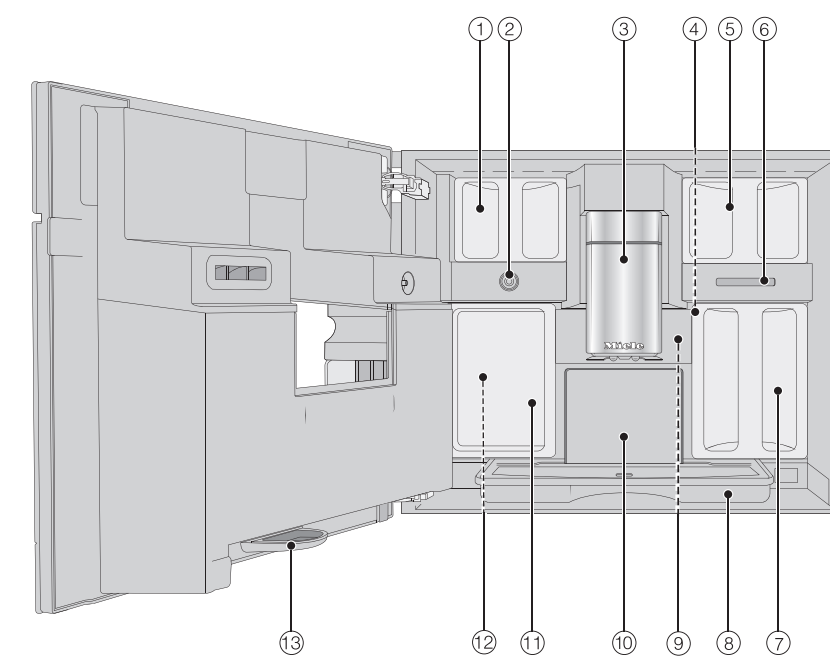
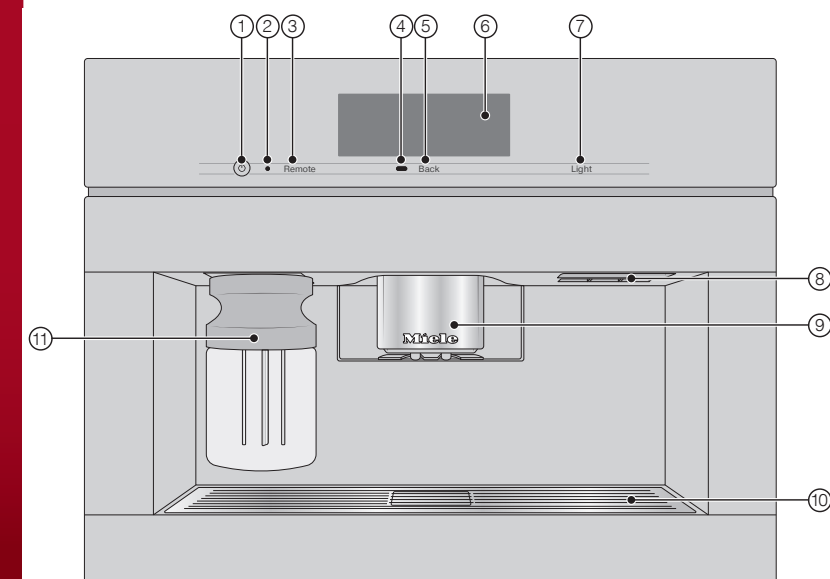
## Description

### Front view

- 1 On/Off button
- 2 Optical interface (for Miele Techni-Service only)
- 3 Remote sensor button (MobileStart)
- 4 Movement sensor
- 5 Back sensor button
- 6 Touch display
- 7 Light sensor button
- 8 Fan outlet
- 9 Height-adjustable main dispenser with lighting
- 10 Drip tray cover
- 11 Milk flask

### Interior view

- 1 Bean containers (Type A and Type C)
- 2 Milk valve
- 3 Height-adjustable main dispenser with lighting
- 4 Grinder setting
- 5 Bean container (Type B)
- 6 Fan outlet
- 7 Water container
- 8 Drip tray with lid
- 9 Brew unit
- 10 Grounds container
- 11 Maintenance container
- 12 Holders for cleaning and descaling cartridges (including adapters)
- 13 Drip tray



## Preparing for use

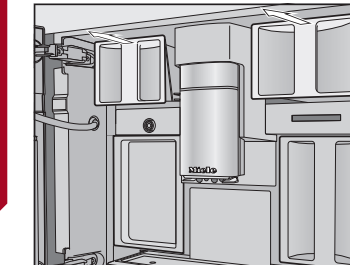
### Filling the water container

- Open the appliance door.
- Pull the water container forward to remove it.
- Fill the water container with fresh, cold drinking water up to the *max.* mark.
- Push the water container back into the coffee machine and close the appliance door.

### Filling the bean containers

Only put roasted coffee beans in the bean containers.

- Open the appliance door.



- Pull the bean containers out and take off the lids.
- Fill the bean containers with coffee beans and put the lids back on the bean containers to seal them.
- Push the bean containers all the way back into the coffee machine.
- Close the appliance door.

See the operating instructions for more information on the bean system.



GUIDE TO THE APPLIANCE/PREPARING FOR USE

## Making a drink

- Place a cup under the main dispenser.
- Select a drink.

### Canceling a drink

- Press Stop or Cancel.

### DoubleShot

- Select the DoubleShot  $\infty$  function if you would like a particularly strong and aromatic coffee. In this case, more coffee beans will be ground and brewed halfway through brewing.
- Touch  $\infty$  while making your coffee.

### Making two portions (☞ sensor control)

To fill 2 cups at the same time:

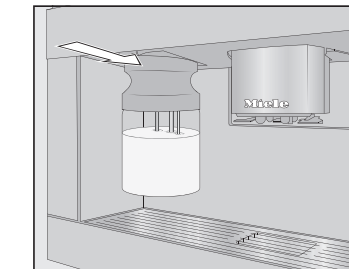
- Place a cup under each of the coffee dispensers in the main dispenser.
- Tap  $\square$ .
- Select a drink.

GUIDE TO THE APPLIANCE/PREPARING FOR USE

## Using the milk flask

Milk is not cooled in the milk flask. Therefore, place the milk flask in the refrigerator if you are not going to use milk for a while. Good milk froth can only be made with cold milk (< 50°F/10°C).

- Fill the milk flask with milk up to a maximum of 3/4" (2 cm) below the rim.



- Push the milk flask back into the coffee machine until it clicks into place.

You can now make drinks with milk.

### Making tea

- Hot water is heated to the optimum temperature for different types of tea.
- Place the tea filter or the tea bag in the tea cup.
  - Place the tea cup under the main dispenser.
  - Select the type of tea on the display.
- Hot water will be dispensed into the cup.
- Remove the tea filter or tea bag when the desired brewing time has elapsed.

**Tip:** You can use the TeaTimer function to start a kitchen timer when making tea (see the operating instructions).

- Place a cup under each of the coffee dispensers in the main dispenser.
- Tap  $\square$ .
- Select a drink.

GUIDE TO THE APPLIANCE/PREPARING FOR USE

## Making drinks

### Pot function

You can make several cups of coffee or tea one after the other automatically with the pot function (maximum of 1 l). Up to 8 cups can be made in this way.

### Preparing the pot

- The drinks menu is displayed.
- Place a sufficiently large container under the main dispenser.
  - Select the required pot function.
  - Select the number of cups you want (3 to 8).
  - Follow the instructions in the display.

### Expert mode

In Expert mode, you can allocate a bean type temporarily and change the portion size while the drink is being made. Expert mode must be activated for this (in the pull-down menu, the word Expert Mode is highlighted in orange).

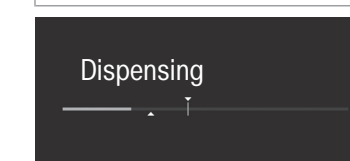
The setting will **not** be saved and will only apply to the current drink.

### Allocating bean containers temporarily

- Tap the top edge of the screen and open the pull-down menu.
- Now select the bean container containing the beans you want to use for the current drink.
- To close the menu window, drag it back up to the top.
- Now start making the drink.

### Changing the portion size

The portion size can only be changed during the individual preparation stages.



- Tap the bar and adjust the indicator (small triangle) as you wish.

GUIDE TO THE APPLIANCE/PREPARING FOR USE

Please observe the detailed information on cleaning and care in the operating instructions. Carefully clean the coffee machine regularly.

Recommended frequency	What do I have to clean/maintain?
<b>Daily</b> (at the end of the day)	- Milk flask and lid - Milk valve - Water container - Drip tray cover - Drip tray and grounds container
<b>Once a week</b> (more often if heavily soiled)	- Main dispenser - Cup rim sensor - Interior - Brew unit - Drip tray - Appliance front
<b>Once a month</b>	- Bean containers
<b>As and when required/after prompt appears in display</b>	- Milk pipework - Degrease the brew unit - Descale the appliance

### Cleaning by hand or in the dishwasher

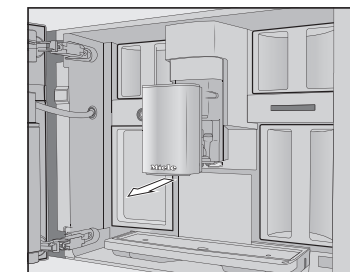
- Clean the following by hand only:**
- Stainless steel cover of the main dispenser
  - Brew unit
  - Bean containers and lids
- The following parts are dishwasher-safe:**
- Drip tray, lid, and grounds container
  - Drip tray cover
  - Main dispenser (without stainless steel cover)
  - Milk flask and lid
  - Cup rim sensor
  - Drip tray
  - Maintenance container
  - Water container

GUIDE TO THE APPLIANCE/PREPARING FOR USE

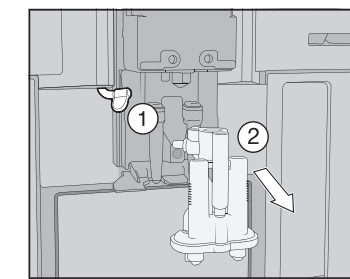
**Cleaning the main dispenser**

Clean the main dispenser stainless steel cover **by hand** only.

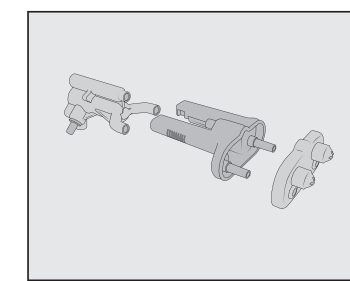
- Open the appliance door.



- Remove the main dispenser stainless steel cover and clean it.



- Detach the milk pipework from the dispensing unit ①. Pull the dispensing unit down to remove it ②.



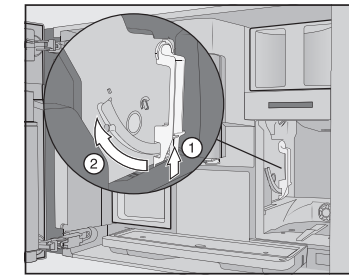
- Disassemble the dispensing unit into 3 parts.
- Clean all parts thoroughly. Clean the surfaces of the main dispenser with a damp cloth.

- Reassemble the dispensing unit.
- Push the dispensing unit back into the main dispenser and replace the stainless steel cover.
- Confirm the message with **OK**.

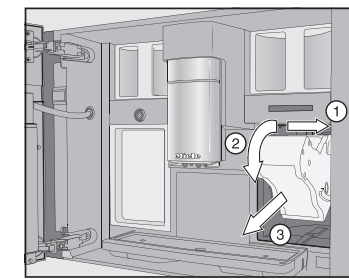
**Removing the brew unit and cleaning it by hand**

Only clean the brew unit by hand with warm water. Do not use any cleaning agents.

- Open the appliance door and remove the water container.



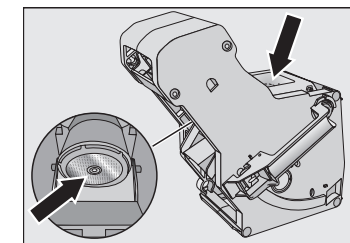
- Press the button under the handle of the brew unit ① and, while doing so, turn the handle forward ②.



- Pull the brew unit to the side ① first and then pull out to the front ②. Tilt the brew unit forward ③.

Once you have removed the brew unit, do not change the position of the handle on the brew unit.

- Clean the brew unit **by hand** under warm running water.



- Wipe any remaining coffee off the filters (see arrows).
- Dry the funnel in the brew unit.
- Carefully clean the inside of the coffee machine.
- Push the brew unit back into the coffee machine.
- Lock the brew unit: Press and hold the button under the brew unit handle and, while doing so, turn the handle to the right.
- Close the appliance door.
- Follow the additional instructions given in the display.

The process is complete when rinsing has finished.

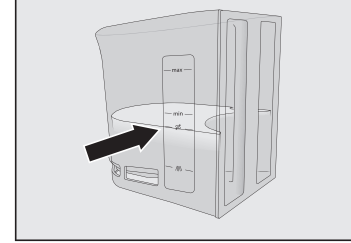
**Descaling the appliance**

You will need 2 descaling tablets for the descaling program.

- Descale appliance will appear in the display.
- Tap **OK**.

The maintenance program will then start.

- Follow the instructions in the display.



- Fill the water container to the descaling symbol with lukewarm water.
- Drop 2 descaling tablets in the water.
- Reinsert the water container.
- Follow the additional instructions given in the display.

When Rinse the water container, refill to the symbol and insert. Close the door appears in the display, proceed as follows.

- Remove the water container and rinse it thoroughly with clean water. Fill the water container to the descaling symbol with fresh drinking water.

The descaling process is complete when rinsing has finished.

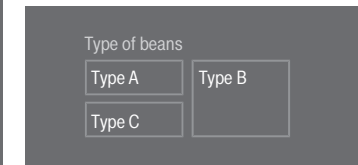
**Bean system**

You can change the names for the types of coffee bean and/or reallocate the types of bean under Settings | Type of beans.

If you do not allocate a type of bean, you will be asked what type of bean you want to use for the coffee as you make it.

**Renaming bean types**

The 3 bean containers are shown in the display as follows and are pre-named.



If you are using the same type of beans in two of or all the bean containers at the same time (for instance, because you only use one bean type), make sure you name them in the exact same way.

- Select Change name.
- Enter the name you want and then tap **Save**.

**Allocating the bean types**

If you have set up at least one profile and at least one coffee drink, first select the profile.

- Select Change allocation.

**Tip:** If you tap All drinks, you will highlight all coffee drinks and you can deselect the ones you do not want.

**Drink parameters**

You can set the amount of coffee, the brewing temperature, and pre-brewing for each drink individually.

- Touch the drink entry and keep your finger on it until the context menu opens.
- Select Parameters.
- Select Amount of coffee, Brew temperature, Pre-brewing or Type of beans.
- Select the setting you want and tap **OK**.
- Tap **OK** again to save your changed settings.

**Portion size**

You can adjust the portion size for all coffee drinks, hot water, all types of tea, and drinks with milk.

- Place a cup under the main dispenser.
- Touch the drink entry and keep your finger on it until the context menu opens.
- Tap Portion size.

The drink will be made and Save will appear in the display, as soon as the minimum dispensing amount is reached.

- When the container is filled to the desired level, tap **Save**.

If you want to change the portion size for coffee drinks made with milk or hot water, the ingredients which make up the drink will be saved one after the other while the drink is being made.

**Performance mode**

You can select the appropriate mode to suit your personal preferences under Settings | Performance Mode. The energy consumption varies depending on the selected mode.

- **Eco Mode:** This is an energy-saving mode.
- **Barista Mode:** This mode is optimized for espresso and coffee drinks.
- **Latte Mode:** In this mode, milk-based drinks can be prepared within a much shorter space of time.

In addition, you can activate **Party Mode** for the occasional intensive use of the coffee machine, e.g., for family get-togethers (see the operating instructions).

**Profiles**

In addition to the Miele drinks menu (Miele profile), you can create individual profiles to cater for different tastes and preferences.

- Select Profiles and then Create profile.
- The editor will open in the display.
- Enter the name you want and then tap **Save**.

The profile is created. You can now prepare drinks.

**Editing profiles**

Once you have created a profile, you can rename, delete, or move profiles via the context menu.

**Setting when the profile should change**

You can choose between the following options:

- **Manual:** The selected profile will remain active until you select another one.
- **After each use:** The machine will revert to the Miele profile whenever a drink is dispensed.

**Creating and processing drinks in a profile**

You can create new drinks based on existing drinks. A maximum of nine drinks can be saved under one profile.

- Start by accessing the profile you want as follows: Tap Profiles and select the profile.
- Tap Create drink and select a drink.
- Change the portion size or drink parameters.

Preparation will begin and you can save the portions for each component as you wish.

- Enter a name for the new drink and tap **Save**.

Once you have created some drinks, you can edit these entries in the context menu.

You can personalize your coffee machine by adapting the factory default settings to suit your requirements.

Factory default settings are marked in italics.

**Language**

- deutsch | ... and other languages
- Location

**Time**

- Display: On | Off | Night dimming
- Clock type: Analog | Digital
- Clock format: 24 h | 12 h (am/pm)
- Set

**Tip:** If you touch the time of day on the top right of the display, you can set the time directly.

**Date**

The date appears if the Time | Clock type | Digital setting is selected.

**Start screen**

- Main menu | Drinks | Profiles | MyMiele

You can select the menu that is displayed when the coffee machine is switched on.

**Timer**

- Appliance timer: On at | Off at | Off after (00:20)
- TeaTimer: Automatic | Manual
- Maintenance timer

**Volume**

- Buzzer Tones
- Keypad Tone
- Welcome Melody: On | Off

**Display**

- Brightness
- Color scheme: Bright | Dark
- QuickTouch: On | Off

**Lighting**

Coffee machine switched on: You can use the sensor control to switch the lighting on or off at any time.

Coffee machine switched off: You can still switch the lighting on or off whenever you like, but you will need to select the following settings first:

- Time | Display | On, or Night dimming (time of day is displayed)
- Display | QuickTouch | On

**Info**

- Number of drinks (Total drinks | Total coffee drinks | ...)
- No. of uses until maintenance: Descalce Appliance | Degrease the brew unit
- Fill levels (of cartridges)

**Fresh water (CVA 7x45)**

- On | Off

**Altitude**

0–250 m, 251–500 m, ...

**Performance mode**

- Eco Mode | Barista Mode | Latte Mode | Party Mode

Party mode is a Performance mode for the occasional intensive use of the coffee machine (see the operating instructions).

**Water hardness**

Set to 22 gpg (21 °dH) at the factory.

**Automatic cleaning**

- On | Off

**Bean types**

- Types A, B, and C: Change name | Change allocation

**Motion sensor**

- Switch the light on: Appliance turned on (On | Off) | Appliance turned off (On | Off)
- Switch the appliance on: On | Off
- Acknowledge buzzer: On | Off

**System lock**

- On | Off

When the system lock is activated, the On at timer and MotionReact cannot be selected.

**Miele@home**

- Set up | Deactivate / Activate | Connection status | Set up again
- Remote Control (On | Off)
- SuperVision: SuperVision display (On | Off), Display in standby (On | Off), Appliance list
- RemoteUpdate (On | Off)

Some menu options only appear if Miele@home has been set up and the coffee machine is connected to a WiFi network.

**Software version**

For Customer Service

**Legal information**

- Open Source Licenses

**Showroom program**

- Demo Mode: On | Off

Quick Start Guide

Coffee machine



This Quick Start Guide is not a substitute for the operating instructions supplied with the appliance. It is essential to familiarize yourself with the coffee machine before using it for the first time. Please read the operating instructions carefully and pay particular attention to the IMPORTANT SAFETY INSTRUCTIONS.