

Using for the first time

⚠ Before commissioning the tumble dryer for the first time, make sure it has been installed correctly. Connect it correctly. Please read the separate operating instructions supplied with the appliance.



⚠ Risk of damage due to incorrect use or operation. This tumble dryer contains a refrigerant that is flammable and explosive. It is essential to read the separate operating instructions.

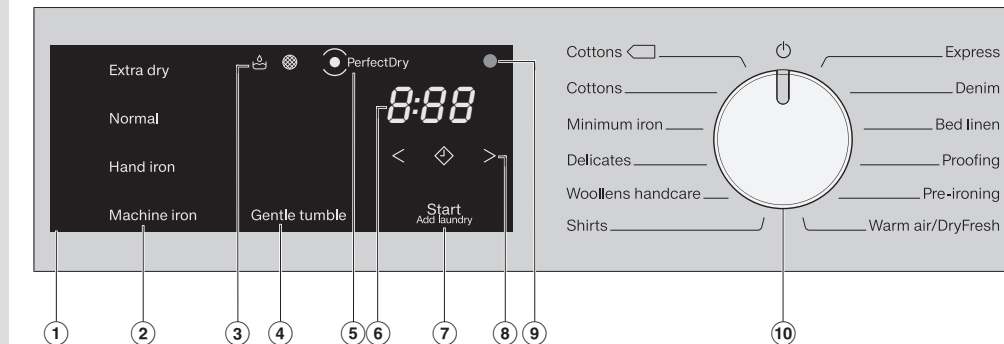
⚠ Damage caused by switching the appliance on too soon. The heat pump can be damaged. After setting up the tumble dryer, wait for at least one hour before starting a drying programme.

Switching on the tumble dryer

■ Turn the programme selector to a programme.

The tumble dryer is switched on by selecting a programme and switched off by turning the programme selector to the position.

Operation



1 Control panel

The , , , and sensors react to fingertip contact. Selection is possible as long as the respective sensor is illuminated.

– If a sensor is brightly lit, this means it is currently selected.
– If a sensor is dimly lit, this means it can be selected.

2 Sensors for the drying levels

After selecting a programme with a selectable drying level using the programme selector, the recommended drying level lights up. The drying levels that can be selected for the corresponding programme are dimly lit.

3 Indicator lights

– Empty the condensed water container
– Clean the fluff and plinth filters

4 **Gentle tumble sensor**
For temperature-sensitive fabrics with the symbol.

5 **PerfectDry indicator**
For programmes with drying levels.

6 Time display

The remaining programme running time is displayed in hours and minutes.

7 Start/Add laundry sensor

Touching the *Start/Add laundry* sensor starts the selected programme. The current programme can be interrupted to add laundry. The programme can be started as soon as the sensor is flashing on and off. The sensor lights up constantly once the programme has started.

8 Sensors

– for the Delay start function
– for the duration of the Delay start function or the *Warm air/DryFresh* programme running time

9 Optical interface

For service technicians.

10 Programme selector

The programme selector can be turned clockwise and anti-clockwise.

Energy savings

There are various steps you can take to avoid unnecessarily long drying times and high energy consumption:

– Make sure your laundry is spun at the maximum spin speed before drying.

– Load according to the optimum amount of laundry recommended for the drying programme. This will mean that the energy consumption for the amount of laundry is the most economical.

– Make sure the room temperature is not too high. If there are other heat producing appliances in the room in which the

tumble dryer is located, make sure the room is well ventilated and switch the other appliances off if possible.

– Clean the fluff filters after every drying cycle.

Drying

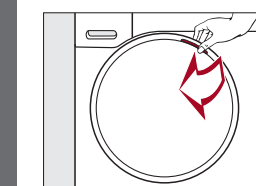
Preparing the laundry

⚠ Damage due to foreign objects which were not removed from the laundry. Foreign objects can melt, burn, or explode.

■ Remove foreign objects (e.g. detergent dispenser, loose bra hangers, lighter and all objects) from the laundry.
■ Fasten duvet covers and pillow cases to prevent small items from being rolled up inside them.

Loading the tumble dryer

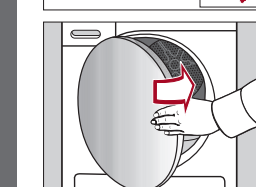
Do not overload the drum. Overloading can give a disappointing drying result and cause unnecessary wear and tear to the laundry. It can also cause more creasing.



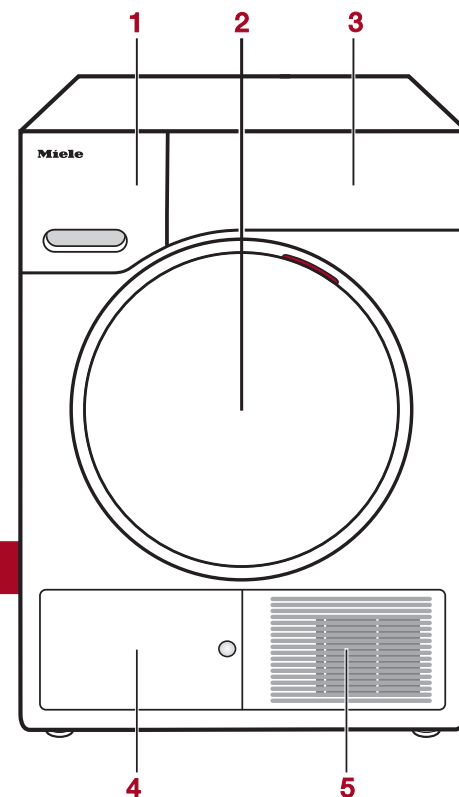
■ Loosen the laundry.
■ Open the tumble dryer door.
■ Check that the drum is empty.
■ Load the laundry in the drum.
■ Insert the fragrance flacon.



If you are drying without a fragrance flacon, close the socket. Push the tab on the cover to the bottom (see arrow).
■ Shut the door with a gentle swing.



Risk of damage to laundry. When closing the door, make sure that laundry does not get trapped in the door opening.



- 1 Condensed water container
- 2 Door
- 3 Control panel
- 4 Plinth filter access panel
- 5 Cold air intake grille

1. Selecting a programme

■ Turn the programme selector.
– The interior drum lighting will come on.
– A suggested drying level may also light up brightly and durations will appear.

2. Selecting programme settings

Selecting the drying level

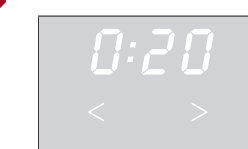
Drying levels can be selected for certain programmes as per the "Programme chart".



■ Touch the sensor for the drying level you want. It then lights up brightly.

Selecting the programme duration

Applies only to *Warm air/DryFresh*.



■ Touch the > sensor repeatedly until the required programme duration lights up.
■ You can reduce the duration with the < sensor.

You can set the duration in 10-minute increments from 20 minutes to 2 hours.

Gentle tumble

Sensitive textiles with care symbol , e.g. made of acrylic, are dried gently.

■ Touch the sensor. It then lights up brightly.

In some programmes, *Gentle tumble* is switched on and cannot be deselected.

Delay start

With Delay start you can delay the start of a programme. The start of the programme can be delayed from 30 minutes up to a maximum of 24 hours.



■ Touch the sensor. It then lights up brightly.
■ Touch the > or < sensor to delay the start of the programme.

Delay start is not possible with *Warm air/DryFresh*.



■ Touch the > sensor repeatedly until the required programme duration lights up.
■ You can reduce the duration with the < sensor.

You can set the duration in 10-minute increments from 20 minutes to 2 hours.

3. Starting the programme

■ Touch the flashing *Start/Add laundry* sensor.

The *Start/Add laundry* sensor lights up and the programme starts. When Delay start is being used, the programme duration will appear after the Delay start time has elapsed.

Adding or removing laundry

You have forgotten an item of laundry, but the programme has already started.

■ Touch the *Start/Add laundry* sensor.

Add will light up in the time display.

■ Open the tumble dryer door.

■ Add or remove laundry.

■ Close the door.

■ Touch the *Start/Add laundry* sensor.

The programme will start.

* Exceptions

In some cases – for example, during the cooling phase or the *Proofing* programme – it is not possible to add laundry items. *Add* does not light up in this case.

Cancelling the current programme

You cannot change to another programme once a programme has started. This prevents the appliance being operated unintentionally.

If you adjust the programme selector, the *-D-* symbol will light up in the time display. This indicator goes out when you select the original programme.

■ Turn the programme selector to the position.

The programme is cancelled. You can now select a new programme.

End of the programme

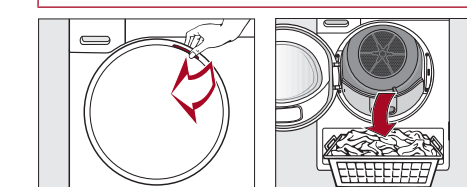
At the end of the programme

End of programme: **0:00** lights up and the *Start/Add laundry* sensor goes out.

– 10 minutes after the end of the programme the *Start/Add laundry* sensor will begin to flash slowly and the display will go out.

– The tumble dryer switches off automatically.

Do not open the tumble dryer door before the end of the programme.



■ Open the door.
■ Remove the laundry.

Items left in the dryer could be damaged by overdrying when the dryer is used the next time. Always remove all items from the drum.

If the dryer is switched on and the door is opened, the drum lighting will come on. The drum lighting will go out after a few minutes to save energy.

■ Turn the programme selector to .
■ Clean the fluff filters.
■ Close the drum door.
■ Empty the condensed water container.

Emptying the condensed water container

Empty the condensed water container after every drying programme.

The indicator light will light up if the maximum level of the condensed water container is reached.

■ Open and close the door to deactivate this message.



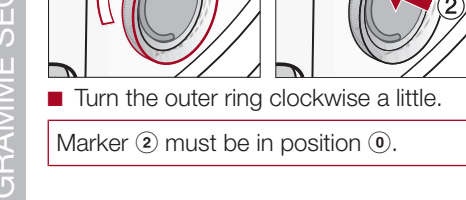
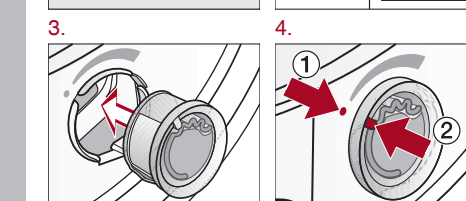
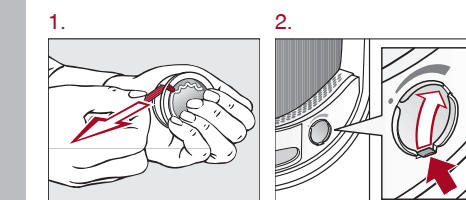
■ Pull out the condensed water container.
■ To prevent water running out, hold the condensed water container by the front panel and at the back to keep it in a horizontal position.
■ Empty the container.
■ Replace the container in the dryer.

FragranceDos

Useful tip: You can use a fragrance flacon to give your laundry a pleasant fragrance.

Before using a fragrance flacon, please read "Warning and Safety instructions - Using a fragrance flacon (optional accessory)" and "Fragrance flacon" in the operating instructions.

Inserting a fragrance flacon

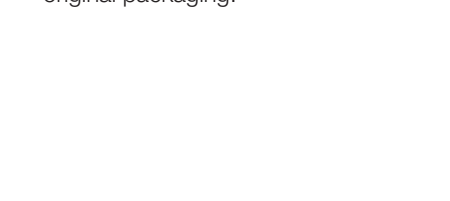
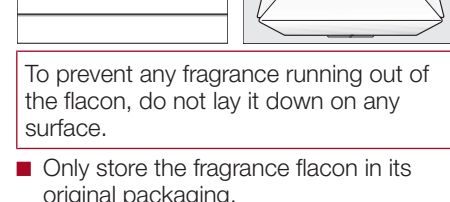
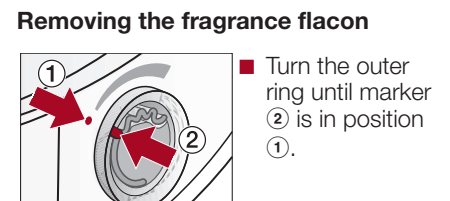
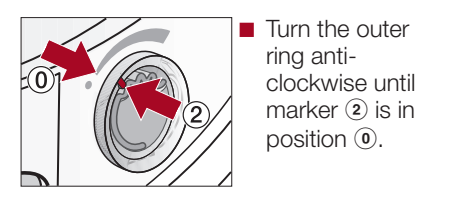


Marker must be in position .

Setting the fragrance intensity

■ The further you turn the outer ring of the fragrance flacon clockwise, the more intense the fragrance.

Closing the fragrance flacon



■ Turn the outer ring anti-clockwise until marker is in position .

■ Turn the outer ring until marker is in position .

■ Remove the fragrance flacon.

■ To prevent any fragrance running out of the flacon, do not lay it down on any surface.

■ Only store the fragrance flacon in its original packaging.

Programme overview

Programme	Load (weight of dry laundry)	Items	Machine iron	Hand iron	Normal	Extra dry
Cottons	8 kg	Cotton items such as those described under <i>Cottons Normal</i> with normal residual moisture.				
Cottons	8 kg	Towelling, jersey wear, T-shirts, underwear, baby clothes, workwear, covers, jackets, bathrobes, and flannelette bed linen. Do not use <i>Extra dry</i> for jersey fabrics (e.g. T-shirts, underwear, baby clothes), as they have a tendency to shrink.				
Minimum iron	4 kg	Workwear, overalls, pullovers, dresses, trousers, leggings and table linen.				
Delicates	2.5 kg	Shirts, blouses, lingerie, appliquéd garments.				
Woolens handcare	2 kg	Pullovers, knitted jackets, socks, stockings.				
Shirts	2 kg	Shirts and blouses.				
Express	4 kg	Garments suitable for the <i>Cottons</i> programme.				
Denim	3 kg	Denim garments, e.g. jackets, jeans, shirts, and skirts.				
Bed linen	4 kg	Bed linen				
Proofing	2.5 kg	Microfibre fabric, skiwear, outerwear, fine close weave cotton garments (poplin), tabiclotis.				
Pre-ironing	1 kg	Cotton trousers, anoraks, shirts.				
Warm air/DryFresh	8 kg	- Warm air (for drying): Thick and multi-layered jackets, pillows, sleeping bags, blankets. - DryFresh (for freshening up): All fabrics. - Use DryFresh bottle. - Select min. 60 minutes.				

X = Yes, - = No

Care symbols

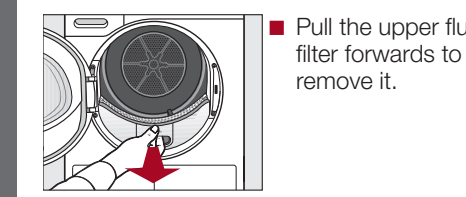
	Drying	Ironing
	Very hot	
	Hot	
	Warm	
	Do not treat with heat	

Cleaning and care

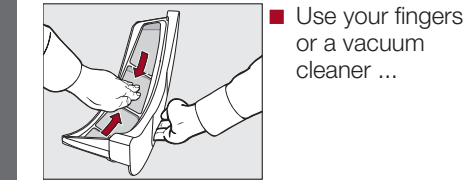
Fluff filter

Removing visible fluff
Clean the 2 fluff filters in the door opening at the end of every programme.

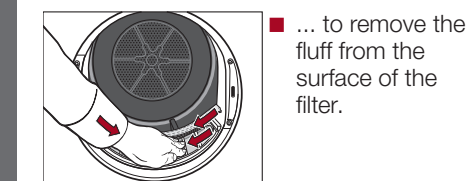
Remove the fragrance flacon.



- Pull the upper fluff filter forwards to remove it.



- Use your fingers or a vacuum cleaner ...



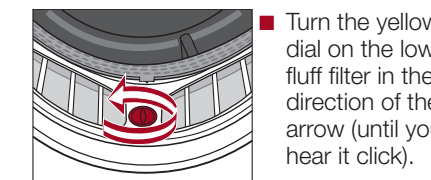
- ... to remove the fluff from the surface of the filter.

- Push the upper fluff filter back in until it clicks into position.
- Close the door.

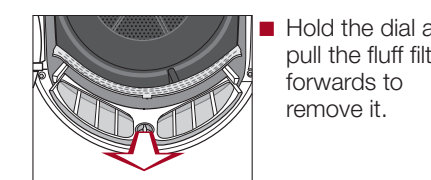
Cleaning the fluff filters and air flow openings thoroughly

If the drying duration has become longer or the surface of the filters is visibly compacted with fluff, you should carry out the following cleaning procedure.

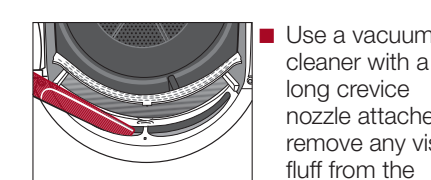
- Pull the upper fluff filter forwards to remove it.



- Turn the yellow dial on the lower fluff filter in the direction of the arrow (until you hear it click).



- Hold the dial and pull the fluff filter forwards to remove it.



- Use a vacuum cleaner with a long crevice nozzle attached to remove any visible fluff from the upper air flow openings.

- Flush the fluff filters through with warm running water.
- Shake the fluff filters thoroughly and then dry them carefully.

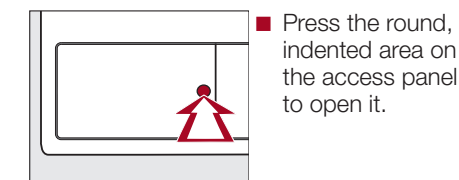
Ensure the filters are dry before replacing them. Wet filters could cause operational faults.

- Refit all of the fluff filters and close the door.

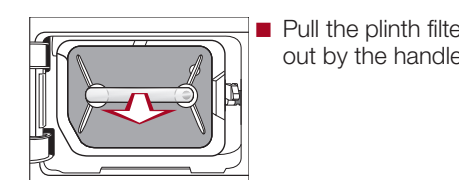
Plinth filter

Clean the plinth filter when the programme duration is longer than usual or whenever the indicator light comes on.

Open and close the door to clear the message.

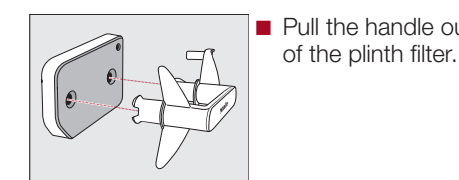


- Press the round, indented area on the access panel to open it.



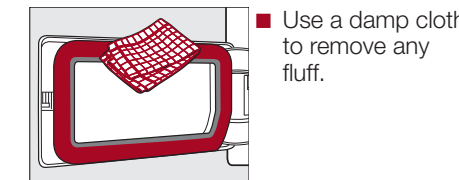
- Pull the plinth filter out by the handle.

When the plinth filter is pulled out, the right guide pin will slide out. The guide pin prevents the flap from being closed without the plinth filter in place.



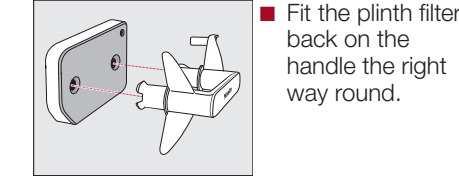
- Pull the handle out of the plinth filter.

- Clean the filter thoroughly under running water.
- Squeeze the plinth filter carefully several times as you rinse it.
- Rinse the plinth filter until all visible residues have been removed.

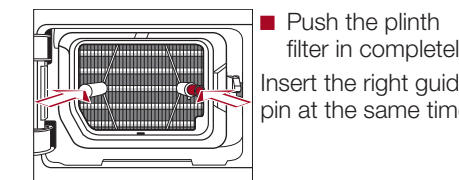


- Use a damp cloth to remove any fluff.

Refitting the plinth filter



- Fit the plinth filter back on the handle the right way round.



- Push the plinth filter in completely. Insert the right guide pin at the same time.

- Close the panel.

Problem solving guide

Problem	Possible cause and remedy
lights up after a programme has been cancelled.	The condensed water container is full or there is a kink in the drain hose. ■ Open and close the door with the tumble dryer switched on to clear the fault. ■ Empty the condensed water container. ■ Check the drain hose.
lights up at the end of a programme.	There is a build-up of fluff. ■ Open and close the door with the tumble dryer switched on to clear the fault. ■ Clean the fluff filter. ■ Clean the plinth filter.
lights up and 055 flashes; the programme is cancelled.	There is a very significant build-up of fluff. ■ Switch the tumble dryer off to deactivate the message. ■ Clean the fluff filter. ■ Clean the plinth filter.
-0- lights up.	The programme selector has been moved. ■ Select the original programme again. The time remaining will appear in the display.
Bars flash in the display at the end of a programme: []...[]... []...	The laundry is cooled down at the end of the programme. ■ Either remove the laundry and spread it out to cool down or leave it in the tumble dryer to cool down during the cooling phase.
[]... flashes/lights up after the tumble dryer is switched on and a programme cannot be selected.	Access via a code has been activated. ■ You must enter the correct PIN code to use the tumble dryer. See "Programmable functions" in the operating instructions.

Problem	Possible cause and remedy
The display is dark and the Start/Add laundry sensor is flashing slowly.	This is not a fault, but a normal function. ■ Touch a sensor to switch on the indicators.
The dryer is switched off at the end of the programme.	The tumble dryer switches off automatically. This is not a fault, but a normal function.
The laundry is not sufficiently dry.	The load consisted of different types of fabric. ■ Finish drying using the <i>Warm air/DryFresh</i> programme. ■ Select a more suitable programme next time.
Items made of synthetic fibres are charged with static electricity after drying.	Items made of synthetic fibre can become charged with static electricity in the tumble dryer. ■ Static charge can be reduced by adding fabric softener to the final rinse in the washing programme.
There is a build-up of fluff.	Fluff is principally the result of friction when garments are being worn and to some extent when they are being washed. Tumble drying hardly causes any fluff to form. Fluff is collected by the fluff filters and the plinth filter. ■ See "Cleaning and care" in the operating instructions.
There are operating noises (whirring/humming).	This is not a fault. The compressor (heat pump) is operating. ■ No action is required.

Miele

Quick Start Guide

Heat pump tumble dryer



These short instructions are not a substitute for the operating instructions supplied with the appliance. Please read the operating instructions supplied with your tumble dryer before using it for the first time and take note of the Warning and Safety instructions, as well as the full descriptions on how to use your appliance.