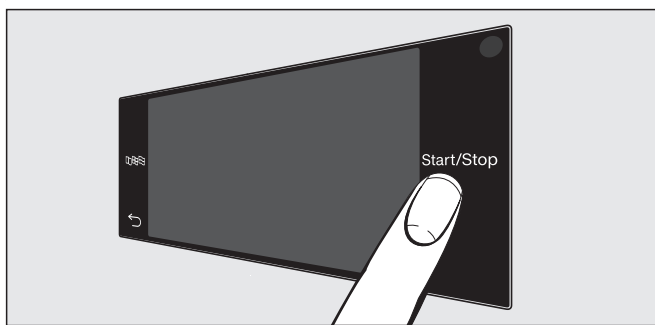
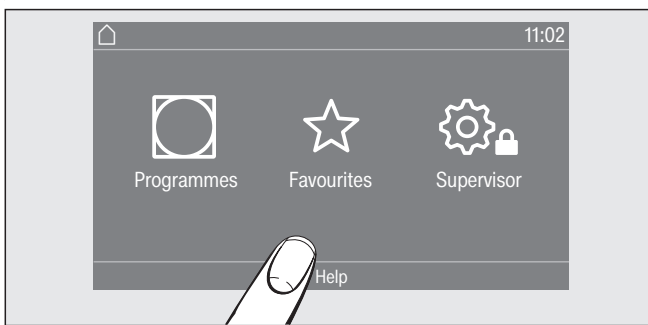


### Touch display with sensor controls



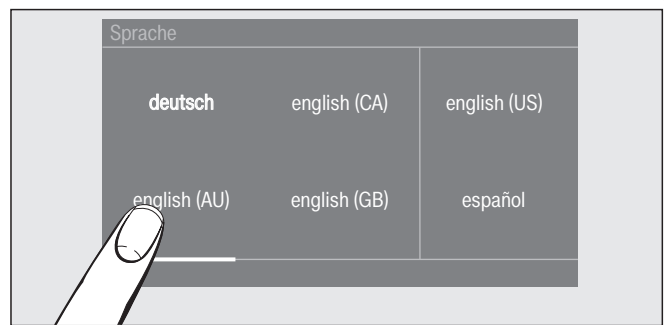
- To switch on: press the ① button. The , and *Start/Stop* sensor controls and the sensor controls in the display react to finger tip contact.

### Help with operation



- Tips for operation can be shown in the display.
- Touch the *Help* sensor control.
  - Swipe right to left across the display.

### ① Select language



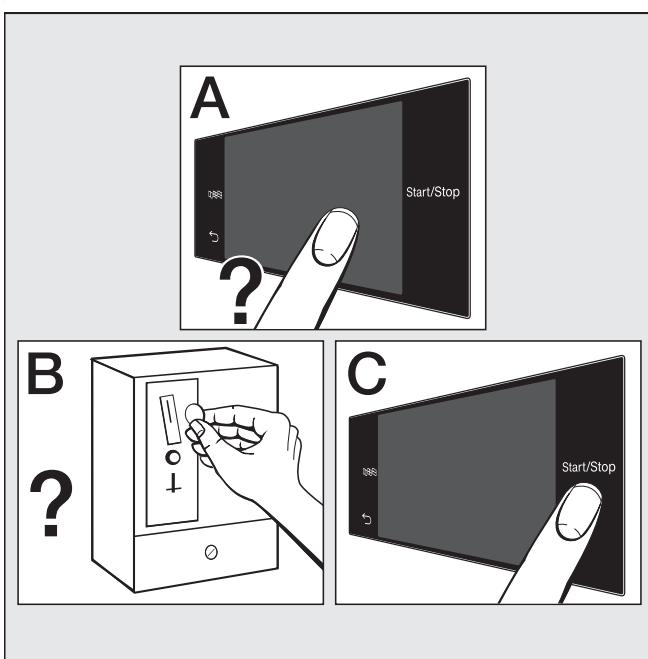
- Touch the sensor control.
- Swipe right or left across the display until the language you want appears.
- Select the language.

### ② Sort the laundry and load the drum



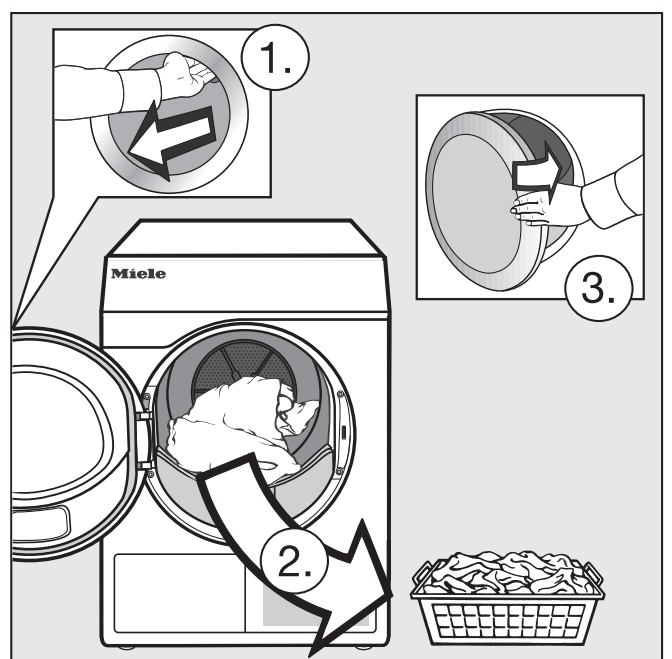
- ☒ = do not tumble dry,
- ⦿ = normal/higher temperature
- ⊗ = select the *Low temperature extra*
- Load the laundry.

### ③ Select and start the programme



- Select a programme (A). Then select *Drying level* or *Duration*, possibly an *Extra*.
- Insert payment (B).
- Touch the *Start/Stop* sensor control (C).

### ④ Unload the laundry



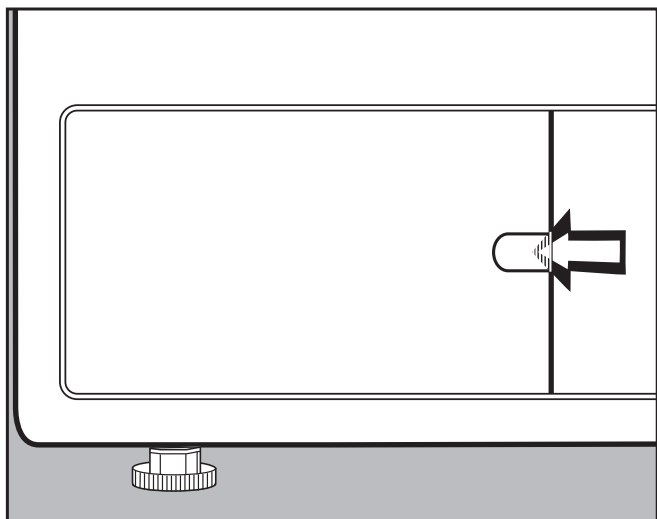
- Finish* appears in the display.
- Open the door.
  - Unload the drum.

Programme	max.	Items
<b>Cottons PRO</b>	8 kg	Cotton items with normal residual moisture such as those described under <i>Cottons</i> .
<b>Cottons</b>	8 kg	Jackets, workwear, overalls, aprons, baby clothes, t-shirts, underwear, cotton blankets, tea towels, hand towels, bath towels, towelling bathrobes, jersey bed linen, boil-proof table linen
<b>Minimum iron</b>	4 kg	Workwear, overalls, tops, dresses, trousers, table linen, tights
<b>Express</b>	4 kg	Items suitable for the <i>Cottons</i> programme.
<b>Delicates</b>	4 kg	Delicate tops, dresses, trousers, overalls, table cloths, shirts, blouses, garments decorated with sequins and beading and lingerie
<b>Shirts</b>	2 kg	Shirts and blouses
<b>Denim</b>	3.5 kg	Trousers, jackets, skirts, shirts
<b>Woollens</b>	2 kg	Tops, cardigans, leggings
<b>Silks</b>	1 kg	Blouses, shirts
<b>Towelling</b>	8 kg	Items made from 100 % towelling, hand towels, bath towels/bathrobes, face flannels, bed linen.
<b>Smoothing</b>	1 kg	Cotton and linen fabric
<b>Automatic plus</b>	5 kg	Mixed loads suitable for the <i>Cottons</i> and <i>Minimum iron</i> programmes
<b>Microfibre</b>	7 kg	Mops, cleaning cloths
<b>Timed drying - warm air</b>	8 kg	Jackets, pillows, sleeping bags, padded items, items made up of multiple layers, small loads
<b>Timed drying - cool air</b>	8 kg	All items that need to be aired.
<b>Basket programme</b> <b>Basket - Low temp.</b>	–	These programmes must only be used with the drying basket. Follow the operating instructions supplied with the drying basket.
<b>Programme packages</b>		
<b>Sport, Soft furnishings, Hygiene, WetCare, Flatwork, Special programmes</b>		Various programmes are available for selection.
<b>Extras</b>		
<b>Low temperature</b>		Reduced temperature during drying.
<b>Anti-crease</b>		Will reduce creasing if the laundry is not removed immediately at the end of a programme.

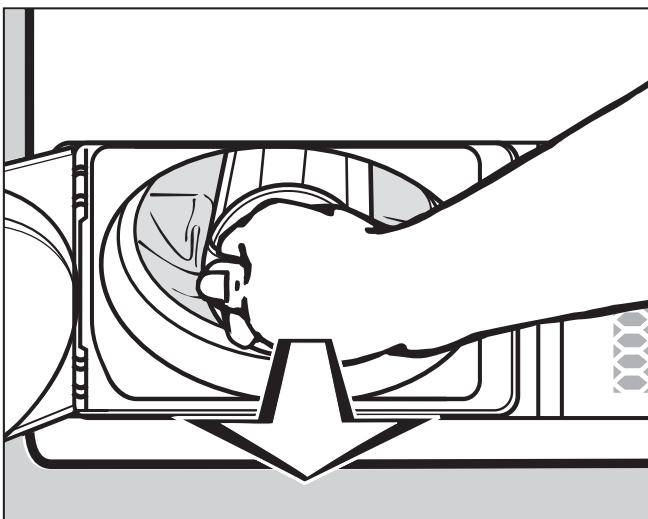


**Tip: Have a vacuum cleaner ready**

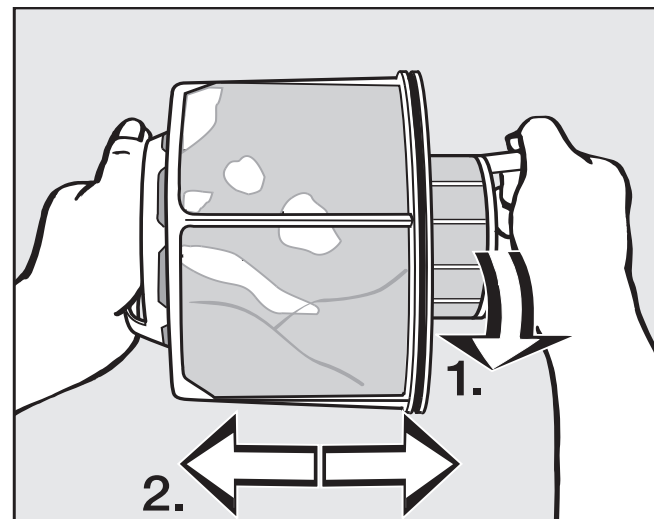
**Cleaning: After drying – and whenever Clean out airways or Clean the fluff filter appears in the display**



The tumble dryer stays switched on.  
 ■ Open the fluff filter flap.  
 Reminder goes out after 10 seconds.

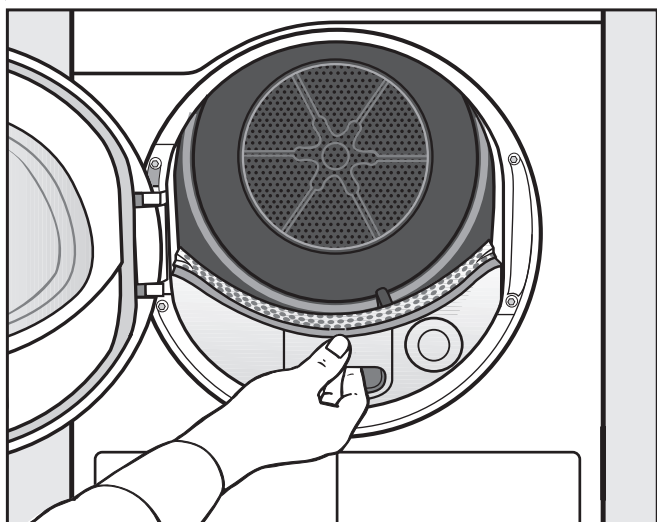


■ Remove the fluff filter.  
 ■ Check the fluff filter at regular intervals for signs of wear.

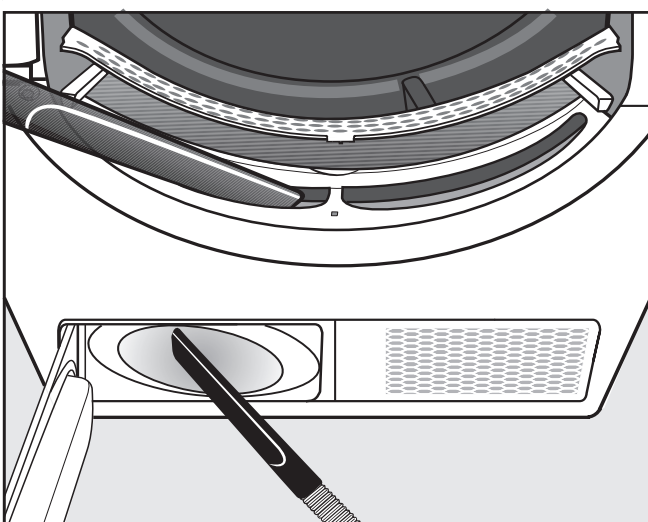


■ Take the fluff filter apart.  
 ■ Remove the fluff from both sections with your fingers or with a vacuum cleaner.

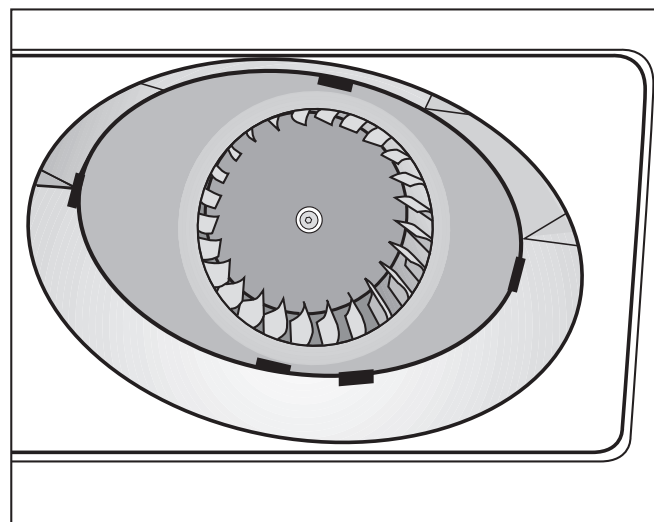
**– Also check and clean if necessary**



■ Remove the cover.  
 ■ Use a damp cloth to remove fluff from the cover.

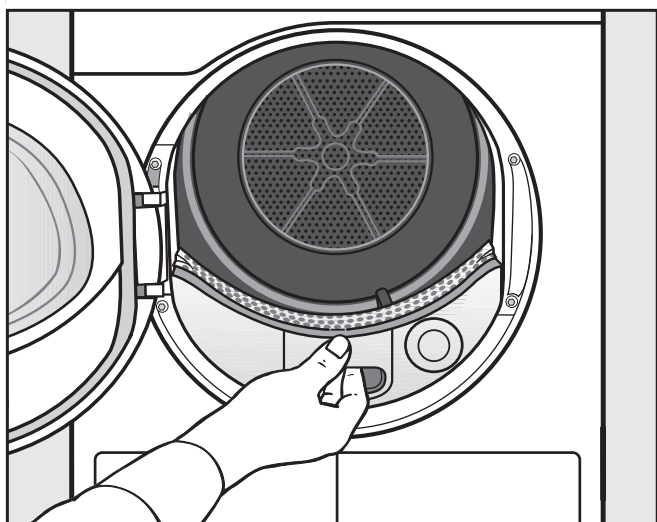


■ Use a vacuum cleaner and crevice nozzle to remove fluff.

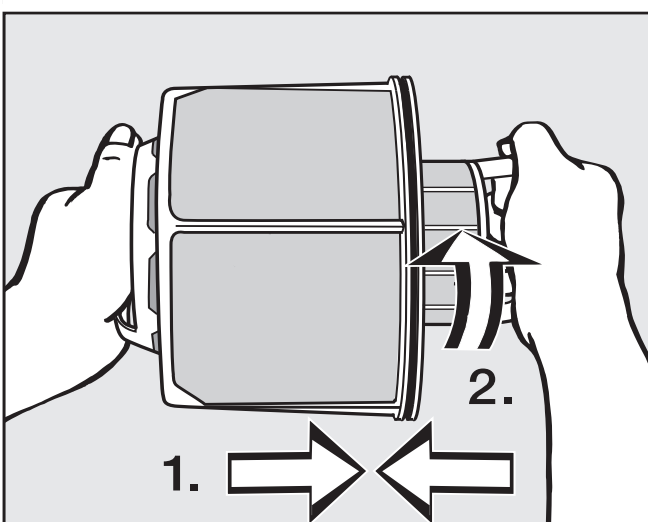


■ Carefully remove the following with a damp cleaning cloth:  
 ... deposits on the fan wheel  
 ... fluff from the area in front of the fan wheel

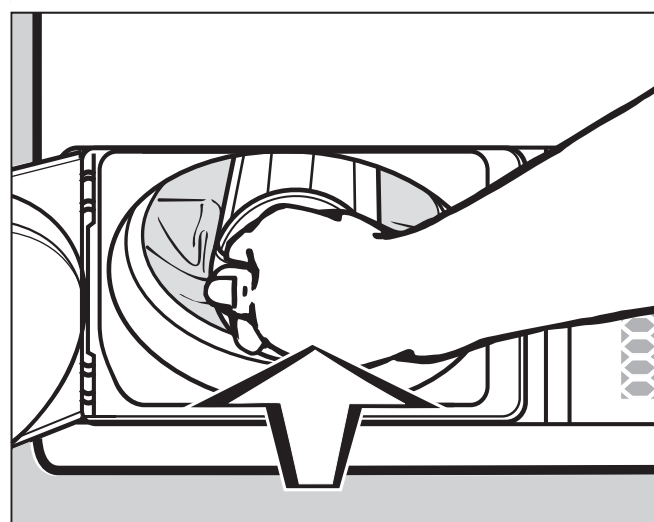
**Refitting the cover and fluff filter**



■ Slide in the cover.



■ Put the fluff filter back together.



■ Slide in the fluff filter.  
 ■ Close the fluff filter cap.

