

Using for the first time

⚠ Before commissioning the tumble dryer for the first time, make sure it has been installed correctly. Connect it correctly. Please read the separate operating instructions supplied with the appliance.



⚠ Damage caused by switching the appliance on too soon. The heat pump can be damaged. After setting up the tumble dryer, wait for at least one hour before starting a drying programme.

Switching on the tumble dryer

- Press the sensor.

The welcome screen will light up.

The display will guide you step by step through the initial commissioning process.

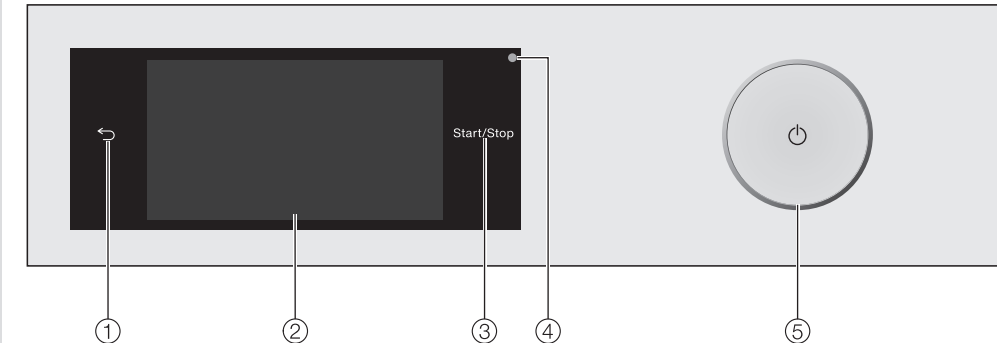
For further information, please refer to the separate operating instructions.

Energy savings

By taking these measures, you can reduce energy consumption:

- Spin the laundry at the maximum spin speed in the washing machine
- Dry a full load size
- Ventilate well at high room temperature
- Clean the fluff filters.

Operation



- sensor**
Takes you back one level in the menu.
- Touch display**

- Start/Stop sensor**
Touching the Start/Stop sensor starts the selected programme or cancels a programme that has already started. The programme can be started as soon as the sensor is flashing on and off. The sensor lights up constantly once the programme has started.
- Optical interface**
For service technicians.

Touch display and sensors

The and **Start/Stop** sensors and the sensors in the display react to fingertip contact.

The touch display can be scratched by pointed or sharp objects, e.g. pens. Only touch the display with your fingers.

- sensor**

For switching the tumble dryer on and off. The tumble dryer switches off automatically to save energy. This occurs 15 minutes after the end of the programme/Anti-crease phase, or after being switched on if no further selection is made.

Main menu

After switching on the tumble dryer, the main menu will appear in the display. You can access all important sub-menus from the main menu. Touch the sensor at any time to return to the main menu. Values that have not yet been confirmed are not saved when you return to the main menu.

Programmes

For selecting drying programmes.

Favourites

You can save your own customised drying programmes.

Wash2Dry

A drying programme tailored to the laundry is set in conjunction with the connected washing machine.

MobileStart

With *MobileControl* you can operate your tumble dryer remotely with the Miele App.

Drying assistant

The Drying assistant guides you step by step so that you can select the optimum drying programme for your laundry.

Settings

You can alter the tumble dryer's electronics to suit changing requirements in the *Settings* menu.

Operating the touch display

Scrolling through menus

You can scroll to the right or the left by swiping your finger across the screen. The orange scroll bar under the pictures shows that there are additional options to choose from.

Options

Touch an option in the menu to select it. If there are multiple options, the selected option will be highlighted in orange.

Pull-down menu

Touch the top edge of the screen in the middle and drag down with your finger.

Drying

Preparing the laundry

⚠ Damage due to foreign objects which were not removed from the laundry. Foreign objects can melt, burn, or explode.

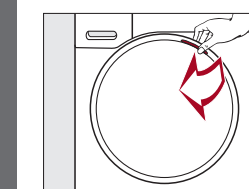
- Remove foreign objects (e.g. detergent dispenser, loose bra hangers, lighter and all objects) from the laundry.
- Fasten duvet covers and pillow cases to prevent small items from being rolled up inside them.

Care symbols in textiles

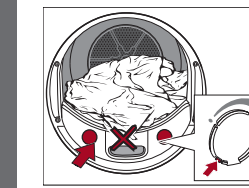
- ☒ Do not tumble dry
- ☒ Suitable for tumble drying
- ☒ *DryCare 40* or *Gentle tumble*
- ☒ Ironing (●●● hot, ●● moderate, ● warm)

Loading the tumble dryer

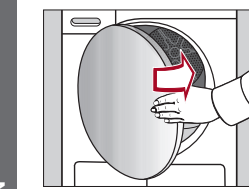
Do not overload the drum. Overloading can give a disappointing drying result and cause unnecessary wear and tear to the laundry. It can also cause more creasing.



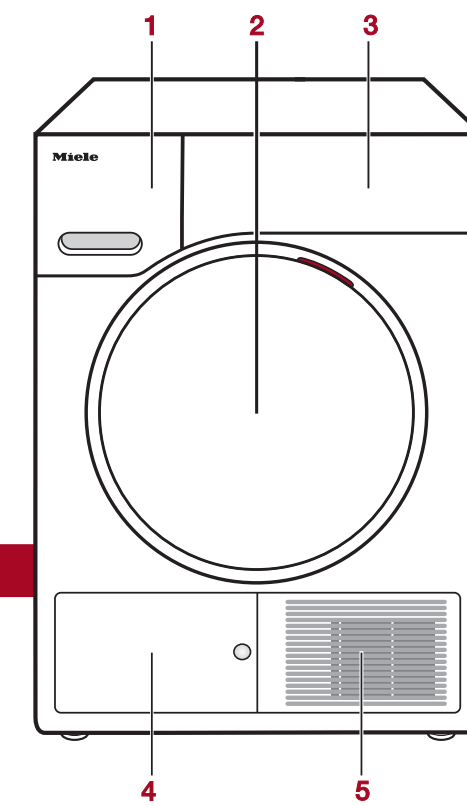
- Loosen the laundry.
- Open the tumble dryer door.
- Check that the drum is empty.
- Load the laundry in the drum.
- Insert the fragrance flacon.



- If you are drying without a fragrance capsule, close both sockets. Slide the tab of each slider downwards (arrows).
- Shut the door with a gentle swing.



- Risk of damage to laundry. When closing the door, make sure that laundry does not get trapped in the door opening.



- Condensed water container**
- Door**
- Control panel**
- Plinth filter access panel**
- Cold air intake grille**

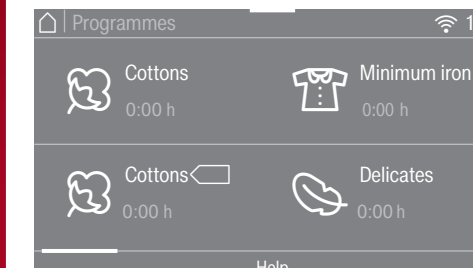
When selecting Wash2Dry

After the programme has finished in the washing machine, the tumble dryer display will show the most appropriate drying programme for the laundry.

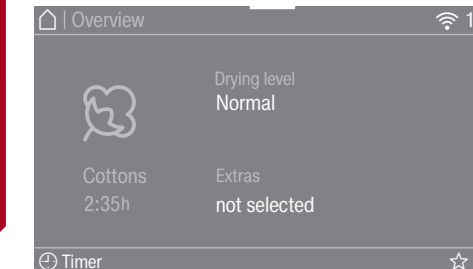
- Once the wash programme has ended, place the clean laundry in the tumble dryer and close the door.
- To start the programme, all you need to do is press the **Start/Stop** sensor on the tumble dryer.

1. Selecting a programme

- Touch the Programmes sensor.



- Scroll to the right of the display until the programme you want appears.



- Touch the sensor for that programme.
- You can change the drying level or the Duration (only in timed drying programmes).

The display will change to show the Overview menu.

There are 4 further ways of selecting a programme.

- The Wash2Dry function
- Favourites
- Drying assistant
- MobileStart

2. Selecting programme settings

Useful tip: The condensed water container must be filled to use certain programmes.

Selecting the drying level

Drying levels can be selected for certain programmes as per the "Programme chart".

- Touch the Drying level sensor.
- Scroll in the display until the drying level you want appears.
- Touch the sensor for the drying level.

Useful tip: *HygieneDry*: reduce laundry load by half.

Selecting the programme duration

You can select a programme duration for the programmes *Cool air*, *Warm air*, *Basket programme*.

- Touch the Duration sensor (only in the *Warm air* programme).
- Place your finger on the number that you want to change and move your finger in the desired direction.
- Confirm with the OK sensor.

Selecting an Extra

Extras can be selected as per the "Programme chart", but are not available for all drying levels.

- Touch the Extras sensor.
- Touch the sensor for the Extra you want.
- Confirm with the OK sensor.

DryFresh

Refreshing without steam.

Tip: use the *DryFresh* fragrance flacon, reduce the load size.

PowerFresh

Refresh using steam.

Tip: use the *DryFresh* fragrance flacon, reduce the load size.

DryCare 40

Gentle temperature for all fabrics that are free of wool and are washable at temperatures of 40°C and above. Tip: reduce the amount of laundry for the load.

Gentle tumble

Temperature protection of textiles with the care symbol .

Freshen up

Refreshing of damp textiles. Tip: use a fragrance flacon.

DRYING

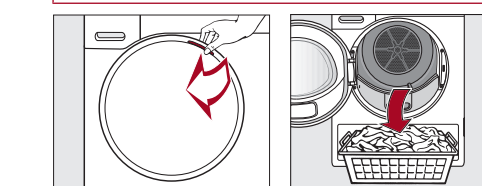
End of the programme

At the end of the programme

The programme is finished when Finish/Anti-crease appears in the display. The **Start/Stop** sensor will no longer light up.

- 10 minutes after the end of the programme the **Start/Stop** sensor will begin to flash slowly and the display will go out.
- The tumble dryer switches off automatically.

Do not open the tumble dryer door before the end of the programme.



- Open the door.
- Remove the laundry.

Items left in the dryer could be damaged by overdrying when the dryer is used the next time. Always remove all items from the drum.

If the dryer is switched on and the door is opened, the drum lighting will come on. The drum lighting will go out after a few minutes to save energy.

- Switch the tumble dryer off with the sensor.
- Clean the fluff filters.
- Close the drum door.
- Empty the condensed water container.

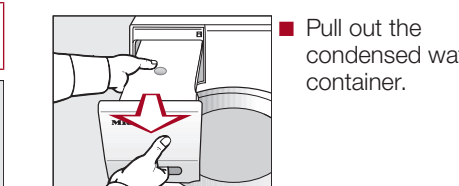
CHANGING THE PROGRAMME SEQUENCE

Emptying the condensed water container

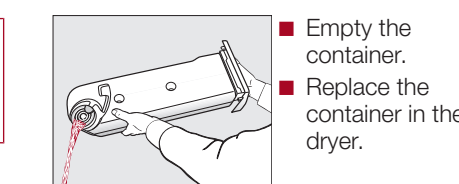
Empty the condensed water container after every drying programme.

The Empty the container or check the drain outlet. indicator will light up if the maximum level of the condensed water container is reached.

- Open and close the door to deactivate this message.



- Pull out the condensed water container.
- To prevent water running out, hold the condensed water container by the front panel and at the back to keep it in a horizontal position.

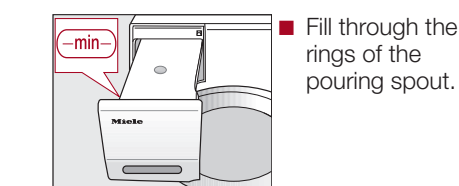


- Empty the container.
- Replace the container in the dryer.

Filling the condensed water container

For some programme applications, the condensed water container must be filled to at least the -min- mark.

With the condensed water draining externally, the condensed water container must be empty. Only fill with commercially available condensed water.



- Fill through the rings of the pouring spout.
- To stop the spray jet becoming calcified, only fill with tap water in exceptional circumstances.

← fold here

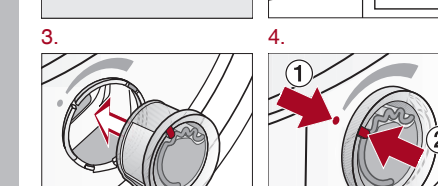
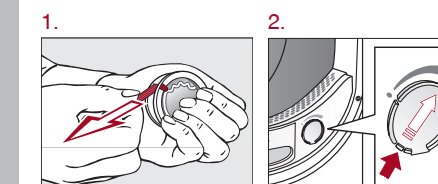
FragranceDos

Useful tip: This tumble dryer has 2 sockets for inserting fragrance flacons. You can use one or both sockets to give your laundry a pleasant fragrance.

Close the unused socket.

Before using a fragrance flacon, please read "Warning and Safety instructions - Using a fragrance flacon (optional accessory)" and "Fragrance flacon" in the operating instructions.

Inserting a fragrance flacon



Setting the fragrance intensity

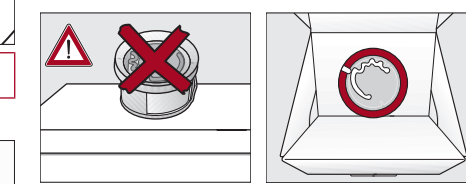
The further you turn the outer ring of the fragrance flacon clockwise, the more intense the fragrance.

Closing the fragrance flacon

Turn the outer ring anti-clockwise until marker ② is in position ①.

Turn the outer ring until marker ② is in position ①.

Remove the fragrance flacon.



To prevent any fragrance running out of the flacon, do not lay it down on any surface.

Only store the fragrance flacon in its original packaging.

M.-Nr. 11 909 400

en-AU, NZ

TWR 780 WP

← fold here

← fold here

← fold here

← fold here

← fold here

Programme overview

Programme	Load (weight of dry laundry)	Items	Extras
Cottons	9 kg	Cotton items such as those described under Cottons Normal with normal residual moisture.	-
Cottons	9 kg	Towelling, jersey wear, T-shirts, underwear, baby clothes, workwear, covers, jackets, bathrobes, and flannelette bed linen. Do not use <i>Extra dry</i> for jersey fabrics (e.g. T-shirts, underwear, baby clothes), as they have a tendency to shrink.	☹️
Minimum iron	4 kg	Workwear, overalls, pullovers, dresses, trousers, leggings and table linen.	☹️
Delicates	2.5 kg	Dress shirts, blouses, lingerie, appliqued garments.	☹️
Bed linen	4 kg	Bed linen.	☹️
Automatic	5 kg	Loading mix of cotton and easy care.	☹️
Woolens handcare	2 kg	Pullovers, knitted jackets, socks, stockings.	☹️
Silks handcare	1 kg	Blouses, shirts.	☹️
Express	4 kg	Garments suitable for the Cottons programme.	☹️
Shirts	2 kg	Shirts and blouses.	☹️
Denim	3 kg	Denim garments, e.g., jackets, jeans, shirts, and skirts.	☹️
Steam care	1 kg	Cotton trousers, anoraks, shirts.	☹️
Sportswear	3 kg	Sportswear	☹️
Basket programme	3.5 kg basket load	Use dryer basket for bags, shoes, soft toys, beanies, scarves, gloves, sequined tops.	☹️
Outerwear	2.5 kg	For outdoor clothing.	☹️
Proofing	2.5 kg	Microfibre fabric, skiwear, outerwear, fine close weave cotton garments (poplin), tablecloths. Risk of fire! Do not use proofing agents containing paraffin.	☹️
Warm air	9 kg	Thick and multi-layered jackets, pillows, sleeping bags, blankets.	☹️
Cool air	9 kg	All textiles.	☹️
Standard/Large pillows	-	Pillows: 2 small 40 x 80 cm or 1 large 80 x 80 cm	☹️
Cottons hygiene	4 kg	Underwear, baby linen, bed linen, towelling.	☹️
Pre-ironing	1 kg	Cotton trousers, anoraks, shirts.	☹️

X = Yes, - = No
 ☹️ = DryFresh, ☹️^o = PowerFresh, ☹️^o = DryCare 40, ☹️ = Gentle tumble, ☹️ = Freshen up
 Extras cannot be combined.

Cleaning and care

Fluff filter

Removing visible fluff

Clean the 2 fluff filters in the door opening at the end of every programme.

Remove the fragrance flacon.

- Pull the upper fluff filter forwards to remove it.
- Use your fingers or a vacuum cleaner ...
- ... to remove the fluff from the surface of the filter.
- Push the upper fluff filter back in until it clicks into position.
- Close the door.

Cleaning the fluff filters and air flow openings thoroughly

If the drying duration has become longer or the surface of the filters is visibly compacted with fluff, you should carry out the following cleaning procedure.

- Pull the upper fluff filter forwards to remove it.
- Turn the yellow dial on the lower fluff filter in the direction of the arrow (until you hear it click).
- Hold the dial and pull the fluff filter forwards to remove it.
- Use a vacuum cleaner with a long crevice nozzle attached to remove any visible fluff from the upper air flow openings.
- Flush the fluff filters through with warm running water.
- Shake the fluff filters thoroughly and then dry them carefully.
- Refit all of the fluff filters and close the door.

Ensure the filters are dry before replacing them. Wet filters could cause operational faults.

- Use a damp cloth to remove any fluff.

Plinth filter

Refitting the plinth filter

Clean the plinth filter when the programme cycle time is longer than usual. Clean it whenever the 1 Clean the fluff and plinth filters. See the operating instruction manual for more information. message lights up too.

To delete the message: Confirm with OK.

- Fit the plinth filter back on the handle the right way round.
- Push the plinth filter in completely. Insert the right guide pin at the same time.
- Close the panel.

When the plinth filter is pulled out, the right guide pin will slide out. The guide pin prevents the flap from being closed without the plinth filter in place.

- Pull the handle out of the plinth filter.
- Clean the filter thoroughly under running water.
- Squeeze the plinth filter carefully several times as you rinse it.
- Rinse the plinth filter until all visible residues have been removed.

Problem solving guide

Problem	Possible cause and remedy
000	Access via a code has been activated. <ul style="list-style-type: none"> ■ You must enter the correct PIN code to use the tumble dryer. See "Settings – Code" in the operating instructions.
☹️ Empty the container or check the drain outlet. + Programme cancellation	The condensed water container is full or there is a kink in the drain hose. <ul style="list-style-type: none"> ■ Open and close the door with the tumble dryer switched on to clear the fault, or switch the tumble dryer off and then on again. ■ Empty the condensed water container. ■ Check the drain hose.
☹️ Clean the fluff and plinth filters. See the operating instruction manual for more information. + Programme cancellation	There is a build-up of fluff. <ul style="list-style-type: none"> ■ To deactivate the message, confirm with OK. ■ See "Cleaning and care" in the operating instructions. ■ Clean the fluff filter. ■ Clean the plinth filter.
☹️ Clean the fluff filter. Check the airways. + Programme cancellation	There is a blockage due to a build-up of fluff. <ul style="list-style-type: none"> ■ See "Cleaning and care" in the operating instructions. ■ To deactivate the message, turn the programme selector to the ☹️ position. ■ Clean the fluff filter. ■ Clean the plinth filter. ■ Clean the air flow openings. ■ Clean the heat exchanger.
☹️ Fill the condensate container with water	The condensed water container is empty. When certain programmes are being used, water is taken from the condensed water container and recycled. <ul style="list-style-type: none"> ■ To deactivate the message, confirm with OK. ■ Fill the condensed water container to at least the —min— mark.
Finish/Cooling down	The laundry is cooled down at the end of the programme. <ul style="list-style-type: none"> ■ Either remove the laundry and spread it out to cool down or leave it in the tumble dryer to cool down during the cooling phase.

Problem	Possible cause and remedy
The display is in a different language.	A different language has been selected in "Settings – Language". <ul style="list-style-type: none"> ■ Set the language you want. The flag symbol serves as a guide.
The display remains dark, and the sensor does not light up or flash.	There is no power to the tumble dryer. <ul style="list-style-type: none"> ■ Check whether the mains plug is plugged in and switched on. ■ Check whether the circuit breaker has tripped. <p>The tumble dryer has switched off automatically to save energy. <ul style="list-style-type: none"> ■ Switch the tumble dryer back on. </p>
The laundry is not sufficiently dry.	The load consisted of different types of fabric. <ul style="list-style-type: none"> ■ Finish drying using the <i>Warm air</i> programme. ■ Select a more suitable programme next time.
Items made of synthetic fibres are charged with static electricity after drying.	Items made of synthetic fibre can become charged with static electricity in the tumble dryer. <ul style="list-style-type: none"> ■ Static charge can be reduced by adding fabric softener to the final rinse in the washing programme.
There is a build-up of fluff.	Fluff is principally the result of friction when garments are being worn and to some extent when they are being washed. Tumble drying hardly causes any fluff to form. Fluff is collected by the fluff filters and the plinth filter. <ul style="list-style-type: none"> ■ See "Cleaning and care" in the operating instructions.
There are operating noises (whirring/humming).	This is not a fault. The compressor (heat pump) is operating, or you have selected a programme which sprays condensed water into the drum. <ul style="list-style-type: none"> ■ No action is required.

Miele

Quick Start Guide

Heat pump tumble dryer

These short instructions are not a substitute for the operating instructions supplied with the appliance. Please read the operating instructions supplied with your tumble dryer before using it for the first time and take note of the Warning and Safety instructions, as well as the full descriptions on how to use your appliance.

en-AU, NZ

M.-Nr. 11 909 400 / 00