

Before the first use

⚠ Damage resulting from incorrect installation and connection. Installing and connecting the washing machine incorrectly will cause serious damage. Please read the separate operating instructions supplied with the appliance.

⚠ Damage resulting from failure to remove the transit bars. Failure to remove the transit bars can result in damage to the washing machine and to adjacent cabinetry or appliances. Please read the separate operating instructions supplied with the appliance.

Running the first wash programme

- Turn on the tap.
- Turn the programme selector to *Cottons*. The washing machine is now switched on and the temperature 40 and spin speed 1400 light up.
- Touch the ►|| sensor.

The programme will start.

Opening the door at the end of the programme

The door remains locked during the Anti-crease phase. The indicators light up for the first 15 minutes.

- Turn the programme selector to the ⏻ position.

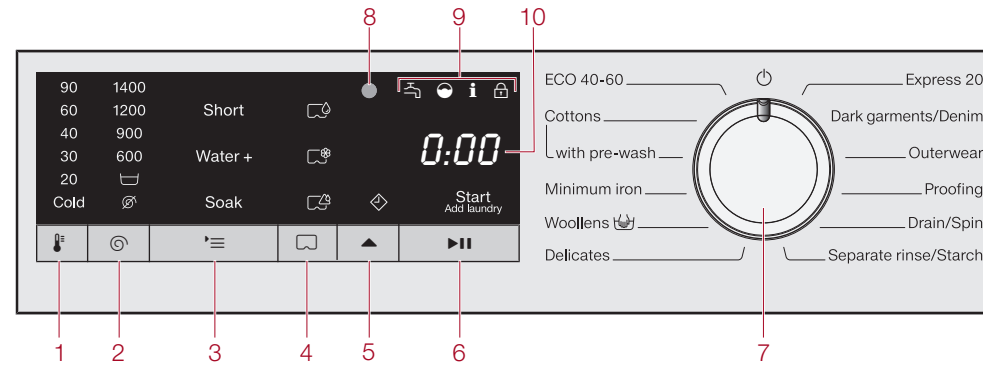
-0- appears in the display and the ⏻ indicator light goes out.

The door will unlock.

- Reach under the door grip and pull the door open.

Note: For safety reasons close the door.

Operating the washing machine



- 1 (temperature) sensor** for selecting the temperature.
- 2 (spin speed) sensor** for selecting the spin speed.
- 3 (Extras) sensor** for selecting Extras
- 4 CapDosing sensors**
 - ☼ = Detergent (for the main wash only)
 - ☼ = Fabric care (e.g. fabric softener)
 - ☼ = Additives (e.g. detergent enhancers)
- 5 ▲ (Delay start) sensor** for activating Delay start.
- 6 ►|| (Start/Add laundry) sensor**
 - Ⓐ Touching the ►|| sensor starts the selected programme. *Start/Add laundry* will light up constantly in the display.
 - Ⓑ Once the programme has been started, the ►|| sensor allows you to add laundry.
- 7 Programme selector** for selecting programmes and for switching the washing machine off. The washing machine is switched on by selecting a programme, and switched off by turning the programme selector to the ⏻ position.
- 8 Optical interface** For service technicians.
- 9 Indicator lights**
 - ☼ = Water inlet or drainage faults
 - ☼ = Excess detergent used
 - i = Reminder about hygiene information
 - Ⓐ = The Add laundry function cannot be selected
- 10 Time display** After the programme has started, the programme duration will be shown in the display in hours and minutes. When Delay start is being used, the programme duration will appear after the Delay start time has elapsed.

Washing environmentally and economically

- Programmes that are more efficient with regard to energy and water consumption generally have a longer running time. By extending the programme running time, the wash temperature that is actually reached can be reduced while still providing the same wash results.
- For example, the Cottons 40°C programme has a longer running time than the Cottons 40°C or 60°C programme, but the Cottons 40°C programme is more efficient in terms of energy and water consumption.
- To get the most out of your machine, load the maximum dry load for the programme you are using.
- Use the *Express 20* programme for small, lightly soiled loads.

Washing

- 1. Preparing the laundry**
 - Empty all pockets.
 - ⚠ Foreign objects (e.g. nails, coins, paper clips, etc.) can cause damage to garments and components in the machine.
 - Sort the laundry by colour and by care label. Most garments have a textile care label in the collar or side seam.
 - Pre-treat stains and badly soiled areas (Please refer to the Miele website or Miele@mobile App for more information on stain removal.).

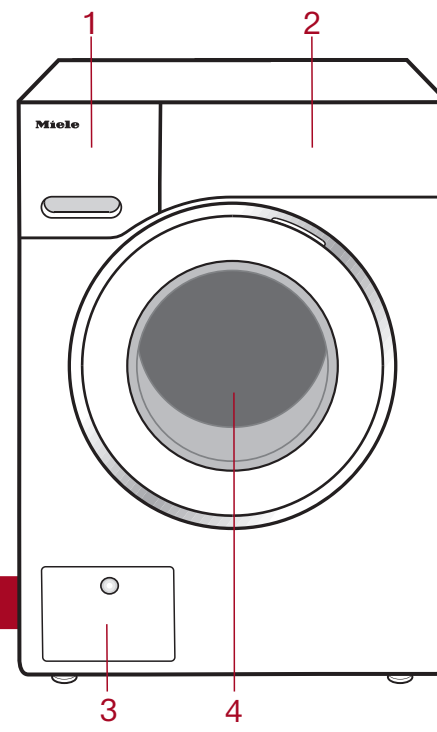
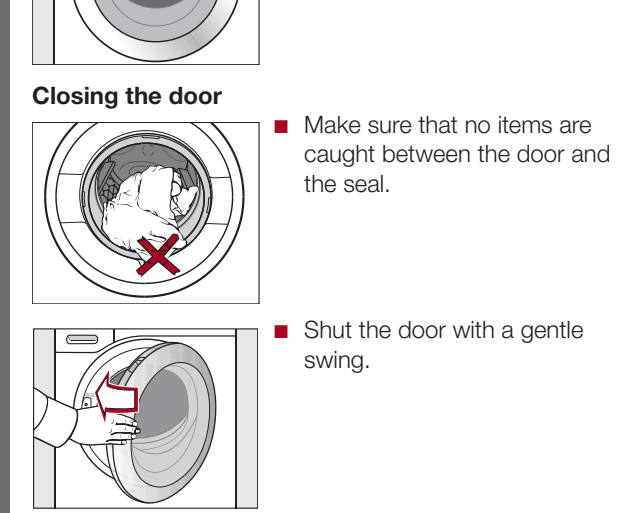
- 2. Loading the washing machine**

Opening the door

 - Reach under the door grip and pull the door open.
 - Unfold the laundry and load loosely in the drum.

Closing the door

 - Make sure that no items are caught between the door and the seal.
 - Shut the door with a gentle swing.



- 1 Detergent dispenser drawer**
- 2 Control panel**
- 3 Access to drain filter, drain pump and emergency release**
- 4 Door**

- 3. Selecting a programme** The washing machine is switched on by turning the programme selector to a wash programme.
- Programme selection**
 - Turn the programme selector to the required programme.
- The estimated wash time is shown in the time display and the preset temperature and spin speed light up.
- Selecting the temperature and spin speed** The wash programme's preset temperature and spin speed light up brightly.
 - Touch the (temperature) sensor to change the preset temperature. Each touch of the sensor decreases the value. After the smallest value is reached, the display jumps to the maximum value.
 - Touch the (spin speed) sensor to change the preset spin speed. Proceed as for setting the temperature.

- Selecting Extras**
- Touch the *≡ sensor.
 - **Once:** the *Short* Extra is selected and lights up.
 - **2 times:** the *Water + Extra* is selected and lights up.
 - **3 times:** the *Soak* Extra is selected and lights up.
 - **4 times:** all the Extras are switched off.

WASHING

fold here

- 4. Adding detergent** There are several options for adding detergent.
- Detergent dispenser drawer**
 - Pull out the detergent dispenser drawer and add detergent to the compartments.
- CapDosing** Three different types of capsules are available:
 - ☼ Detergent
 - ☼ Fabric care (e.g. fabric softener)
 - ☼ Additives (e.g. booster)
- Activating CapDosing**
 - Touch the ☼ sensor:
 - **Once:** the ☼ symbol is selected and lights up.
 - **2 times:** the ☼ symbol is selected and lights up.
 - **3 times:** the ☼ symbol is selected and lights up.
 - **4 times:** CapDosing is switched off.
- 5. Starting the programme**
 - Touch the ►|| sensor.The door will lock and the programme will start.
- Adding laundry during a programme sequence** Laundry can be added or removed at any time, provided that the ⏻ symbol is not lit up on the control panel.
 - Touch the ►|| sensor.Rotating bars LJJ ... LJJ ... LJJ are shown in the time display.
- When the word *Add* appears in the display, the door can be opened.
 - Open the door and add or remove laundry.
 - Close the door.
 - Touch the ►|| sensor.The wash programme will continue. Laundry cannot usually be added or removed if:
 - The suds temperature is above 55°C
 - The water inside the drum is above a certain level
- 6. At the end of the programme** The door is locked in the Anti-crease phase. 0:00 appears in the time display.
 - Turn the programme selector to the ⏻ position.The ⏻ indicator light will go out. The door will unlock.
- Note:** After the Anti-crease phase, the door will unlock automatically.
- Reach under the door grip and pull the door open.
- Remove the laundry.
- Check the folds in the door seal for any small articles, e.g. buttons, which might be lodged there.
- Note:** For safety reasons close the door.
- Remove any used capsules from the detergent dispenser drawer.
- Tip:** Leave the detergent dispenser drawer slightly open to allow it to dry.

- Changing the programme (safety lock)**
- It is not possible to change the programme, the temperature, the spin speed or the selected Extras after the programme has started. This prevents the appliance being operated unintentionally, e.g. by children.
- Cancelling a programme**
- You can cancel a programme at any time after it has started.
- Turn the programme selector to the ⏻ position.
 - Turn the programme selector to any position.
- Rotating bars LJJ ... LJJ ... LJJ are shown in the time display.
- The water is pumped away and the door lock is released.
- Selecting a new programme**
- Turn the programme selector to the required programme.
 - Check that there is still sufficient detergent in the detergent drawer. Add more detergent if necessary.
 - Touch the ►|| sensor.

ADDING LAUNDRY

fold here

Delay start/Extras

- Delay start**
- With Delay start you can delay the start of a programme from 30 minutes up to a maximum of 24 hours.
- This allows you to make use of night-time economy electricity rates, for example.
- Selecting Delay start**
- Select the programme required.
 - Touch the ▲ sensor.
- The Delay start time lights up in the time display.
- For below 3 hours, the Delay start time changes in increments of 30 minutes.
 - For more than 3 hours, the Delay start time changes in increments of 1 hour.
- Touch the ►|| sensor.
- The Delay start process starts and counts down in the time display.
- Note:** Delay start cannot be selected with the *Drain/Spin* or *Proofing* programmes.
- Extras**
- You can select or deselect Extras by touching the corresponding sensor on the control panel.
- Short**
- For light soiling with no visible staining. The wash duration is reduced.
- Water plus**
- The water level in the main wash and the rinses will be increased.
- You can programme other options for the *Water plus* Extra. These are described in "Programmable functions" in the operating instructions.
- Soak**
- For heavily soiled and stained items with protein stains.
- A duration of between 30 minutes and 2 hours can be chosen for the soak process in 30-minute increments (see "Programmable functions" in the operating instructions).
- Pre-wash**
- For laundry with large amounts of dirt, e.g. dust and sand.

Programme chart

| Programme | Load (in kg) | Temperature | Items | Extra |
|------------------------|--------------|--------------|---|--------------------|
| ECO 40-60 ¹ | 7.0 | | For normally soiled cotton garments. A laundry load consisting of mixed cottons that are intended for washing at 40°C or 60°C can be washed in the same wash cycle. This programme is the most efficient in terms of energy and water consumption for washing cottons. | (A), (B), (C), (D) |
| Cottons | 7.0 | Cold to 90°C | Cottons, linens or cotton mix fabrics, e.g. table linen, towelling, underwear, T-shirts etc. Where particularly high levels of hygiene are required, please select a temperature of 60°C or higher. If you want to select a pre-wash, turn the programme selector to the Pre-wash position. | |
| Minimum iron | 3.5 | Cold to 60°C | Synthetic and mixed fibre textiles and easy care cotton. | (A), (B), (C) |
| Woolens | 2.0 | Cold to 40°C | Machine-washable or hand-washable wool or wool blend fabric. If the care label does not specify a temperature, wash using the cold setting. | |
| Delicates | 2.0 | Cold to 40°C | Delicate garments made from synthetic fibre, mixed fibre, rayon and viscose. | (A), (B), (C) |
| Express 20 | 3.5 | Cold to 40°C | Cotton garments that have hardly been worn or are only very lightly soiled. | (A) |
| Dark garments/Denim | 3.0 | Cold to 60°C | Black and dark garments made from cotton, mixed fibres and denim. | (A), (B), (C) |
| Outerwear | 2.5 | Cold to 40°C | Performance outerwear (e.g. jackets and trousers) made from membrane fabric such as Gore-Tex®, SYMPATEX®, WINDSTOPPER®, etc. | (A), (B), (C) |
| Proofing | 2.5 | 40°C | Microfibre fabric, skiwear and table linen made from mainly synthetic fibres. | |
| Drain/Spin | - | | Drain only: Select for the spin speed. | |
| Separate rinse/ Starch | 7.0 | | For rinsing hand-washed items/ For starching table cloths, serviettes and workwear. | (B) |

¹ Information for customers:

You cannot select any temperatures or Extras for the ECO 40-60 wash programme. The Cottons wash programme, which is the most efficient in terms of energy and water consumption, can be selected via the ECO 40-60 wash programme.








– Touch the sensor 2 times for the Cottons programme. Only 40 lights up in the display.

= Short; = Water +; = Soak; = Pre-wash

PROGRAMME CHART

Detergent

Miele recommended detergents

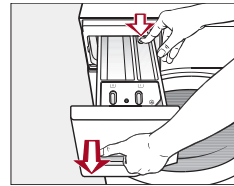
| Programmes | Miele detergents | | Miele capsules | | |
|---|---|------------|---|---|---|
| | UltraWhite | UltraColor |  |  |  |
| ECO 40-60 | ✓ | ✓ | – | ✓ | ✓ |
| Cottons | ✓ | ✓ | – | ✓ | ✓ |
| Minimum iron | – | ✓ | – | ✓ | ✓ |
| Woolens  | – | – | ✓ | – | – |
| Delicates | – | ✓ | ✓ | ✓ | – |
| Express 20 | – | ✓ | – | ✓ | – |
| Dark garments/ Denim | – | ✓ | ✓ | ✓ | – |
| Outerwear | – | – | ✓ | – | – |
| Drain/Spin | – | – | – | – | – |
| Separate rinse/ Starch | –/– | –/– | –/– | ✓/– | –/– |
| ✓ Recommended |  | | Specialist detergents (e.g. WoolCare) | | |
| – Not recommended |  | | Fabric care (e.g. fabric softener) | | |
| |  | | Additive (e.g. booster) | | |

Cleaning and care

Cleaning the detergent dispenser drawer

Washing at low temperatures and the use of liquid detergent can lead to a build-up of mould and bacteria in the detergent dispenser drawer.

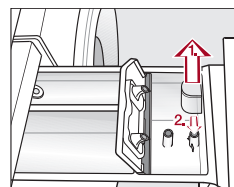
- For hygiene reasons, clean the entire drawer at regular intervals.



- Pull out the detergent dispenser drawer until a resistance is felt.

- Press down the release button and, at the same time, pull the drawer right out of the machine.
- Clean the detergent drawer with warm water.

Cleaning the siphon tube and the fabric softener channel

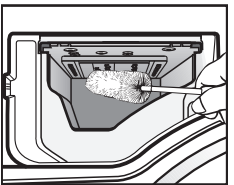


- Clean the siphon tube in the same way.
- Refit the siphon.



⚠ Liquid starch can cause the siphon to become clogged. Make sure that you clean the siphon and siphon tube particularly thoroughly after using liquid starch a few times.

Cleaning the detergent dispenser drawer housing



- Use a bottle brush to remove detergent residues and limescale from the jets inside the detergent dispenser drawer housing.

Cleaning the drum (Hygiene info)

Washing at low temperatures and/or using liquid detergent can cause bacteria and unpleasant odours to build up in the washing machine. Use the *Cottons 90°C* programme to clean the washing machine. Clean the drum at the latest when the indicator light comes on.

Problem solving guide

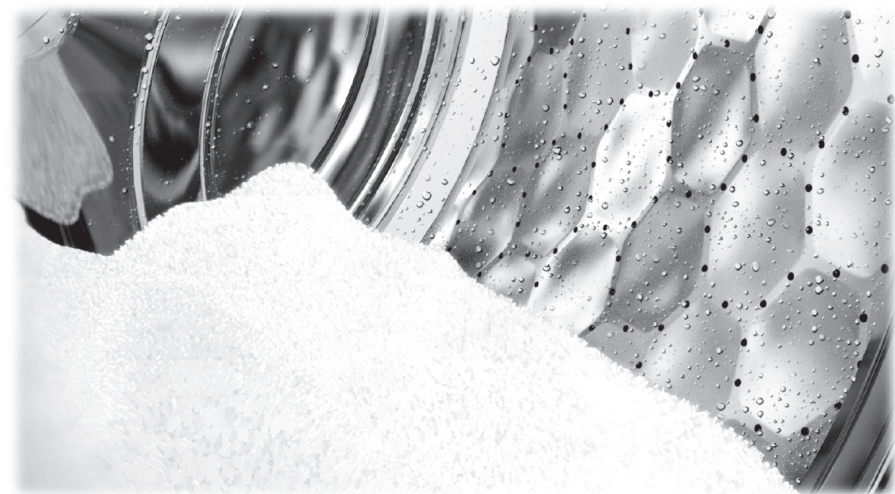
With the help of the following guide, minor faults in the performance of the appliance, some of which may result from incorrect operation, can be remedied without contacting Miele. This will save you time and money because you won't need a service call.

| Problem/Fault message | Possible cause and remedy |
|---|--|
| The control panel remains dark. | There is no power to the machine. ■ Check whether the mains plug is plugged in and switched on. ■ Check whether the circuit breaker has tripped. The washing machine has switched off automatically to save energy. ■ Turn the programme selector to switch the washing machine back on. |
| F and 34 alternate in the time display. | The door is not closed properly. The door lock could not engage. ■ Close the door again. ■ Start the programme again. If the fault message appears again, contact Miele. |
| The fault indicator light lights up. F and 11 alternate in the time display and the buzzer sounds. | The water outlet is blocked or restricted. The drain hose has been fixed too high. ■ Clean the filter and the drain pump. ■ The maximum drain height is 1 m. |
| The fault indicator light lights up. F and 10 alternate in the time display and the buzzer sounds. | The filter in the water inlet is blocked. ■ Clean the filter (see the operating instructions). The water inlet is blocked or restricted. ■ Check whether the tap is turned on properly. ■ Check whether the inlet hose is kinked. ■ Check whether there is sufficient water pressure. |
| F and XXX alternate in the time display and the buzzer sounds. | The filter in the water inlet is blocked. ■ Clean the filter (see the operating instructions). There is a fault. ■ Disconnect the washing machine from the electricity supply, either by switching it off at the wall socket and withdrawing the plug, or by disconnecting it at the circuit breaker. ■ Wait at least 2 minutes before reconnecting the washing machine to the electricity supply. ■ Then switch the washing machine back on. ■ Restart the programme. If the fault message appears again, contact Miele. |

| Problem/Fault message | Possible cause and remedy |
|--|---|
| -0- lights up in the time display. | The programme selector was moved to a different position after the programme had started. ■ Turn the programme selector back to the original position. |
| The indicator light lights up. | Excessive foam has built up during washing. ■ Use less detergent next time and follow the manufacturer's instructions on dosage given on the packaging. |
| The indicator light lights up. | A programme using a temperature above 60°C has not been run for a long period of time. ■ In order to prevent bacteria and unpleasant odours building up in the machine, run the <i>Cottons 90°C</i> programme using the Miele IntenseClean machine cleaner or a universal powder detergent. This will clean the washing machine and prevent a build-up of bacteria and odours. |
| After the programme is cancelled, flashing bars appear in the time display. | For safety reasons, the door cannot be opened if the suds temperature is higher than 55°C. ■ Wait until the temperature in the drum has decreased and the bars have stopped flashing in the display. |
| F and 35 alternate in the time display. | The door lock has jammed. ■ Call Miele. |
| The door cannot be pulled open during a programme. | The drum is locked during a programme. ■ Follow the instructions in "5. Starting the programme – Adding laundry during a programme sequence". |



Quick Start Guide
Washing machine



PROBLEM SOLVING GUIDE

These short instructions are not a substitute for the operating instructions supplied with the appliance. Please read the operating instructions supplied with your washing machine before using it for the first time and take note of the Warning and Safety instructions, as well as the full descriptions on how to use your appliance.

