

Before the first use

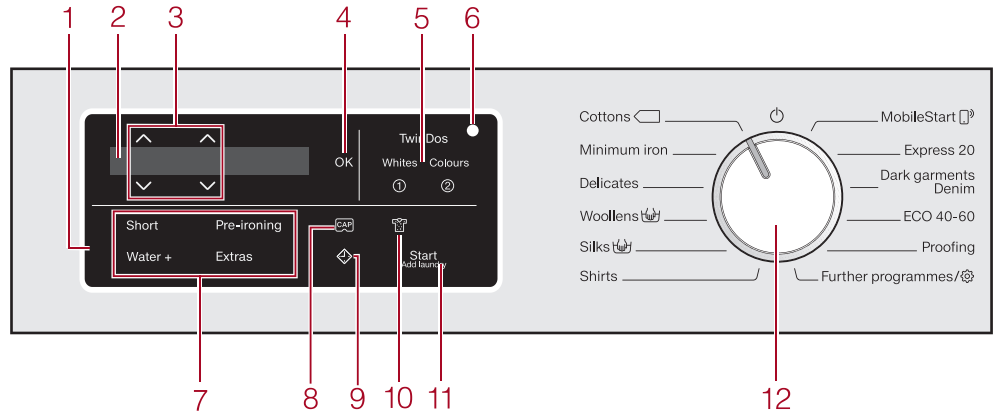
⚠ Damage resulting from incorrect installation and connection. Installing and connecting the washing machine incorrectly will cause serious damage. Please read the separate operating instructions supplied with the appliance.

⚠ Damage resulting from failure to remove the transit bars. Failure to remove the transit bars can result in damage to the washing machine and to adjacent cabinetry or appliances. Please read the separate operating instructions supplied with the appliance.

Switching on the washing machine

- Turn the programme selector to the *Cottons* programme.
- The welcome tone will sound and the welcome screen will light up.
- The display will guide you through the initial commissioning, which is divided into 5 steps.
- For further information please refer to the separate operating instructions.

Operating the washing machine



1 Control panel

The control panel consists of a display and various sensor controls.

2 Display

The following values are displayed and/or selected in the display:

3 V sensors

The values in the display can be changed with the V sensors.

4 OK sensor

The OK sensor is used to confirm selected values.

5 TwinDos sensors with options for Whites and Colours

The TwinDos sensor is used for deactivating and activating automatic detergent dispensing.

6 Optical interface

For service technicians.

7 Sensors for Extras

You can supplement the wash programmes with Extras.

8 sensor

Activates detergent dispensing with a capsule.

9 sensor

The sensor starts the Delay start function.

10 sensor

You can specify the level of soiling of the load in three settings. This sensor is only active with the TwinDos option activated.

Operating the sensor controls

The sensor controls react to fingertip contact. Selection is possible as long as the respective sensor is illuminated. If a sensor is brightly lit, this means: currently selected. If a sensor is dimly lit, this means: selection possible.

11 Start/Add laundry sensor

- A Touching the Start/Add laundry sensor starts a programme. The sensor lights up constantly.
- B Once the programme has been started, the Start/Add laundry sensor allows you to add laundry.

12 Programme selector

For selecting programmes and switching the washing machine off.

Washing environmentally and economically

- Programmes that are more efficient with regard to energy and water consumption generally have a longer running time. By extending the programme running time, the wash temperature that is actually reached can be reduced while still providing the same wash results.
- For example, the Cottons 40°C programme has a longer running time than the Cottons 40°C or 60°C programme, but the Cottons 40°C programme is more efficient in terms of energy and water consumption.
- To get the most out of your machine, load the maximum dry load for the programme you are using.
- Use the Express 20 programme for small, lightly soiled loads.

Preparing the laundry

1. Preparing the laundry

- Empty all pockets.



⚠ Foreign objects (e.g. nails, coins, paper clips, etc.) can cause damage to garments and components in the machine.

- Sort the laundry by colour and by care label. Most garments have a textile care label in the collar or side seam.
- Pre-treat stains and badly soiled areas (Please refer to the Miele website or Miele@mobile App for more information on stain removal.).

2. Selecting a programme

- Turn the programme selector to a programme.

Programme selection

There are three possible ways to select a programme:

1. Selecting standard programmes via the programme selector

- Turn the programme selector to the required programme.
- The selected programme will appear in the display. This will then be replaced by the standard display.

2. Selecting further programmes via the "Further programmes/" setting and the display:

- Turn the programme selector to the *Further programmes/* position.
- Touch the V sensors until the programme you want appears in the display.
- Confirm the programme with the OK sensor.

3. Selecting programmes via the MobileStart function and the Miele@mobile App

- Turn the programme selector to the *MobileStart* position.
 - Touch the Start/Add laundry sensor.
- The washing machine can now be operated via a mobile device using the Miele@mobile App.

Selecting a programme

3. Loading the washing machine

Opening the door

- Take hold of the door and pull it open.
- Unfold the laundry and load loosely in the drum.

Closing the door

- Make sure that no items are caught between the door and the seal.
- Shut the door with a gentle swing.

4. Selecting programme settings

Selecting a temperature/spin speed

- Touch the V sensors above or below the temperature or spin speed value in the display until the temperature/spin speed you want appears in the display.

Selecting Extras

There are two ways of selecting Extras.

1. Directly above the sensors

- Touch the sensor for the Extra you want. It then lights up brightly.

2. Via the Extras sensor and the display

- Touch the Extras sensor.
- The following appears in the display: No Extras ✓
- Touch the V sensors until the Extra you want appears in the display and confirm this with the OK sensor.

PREPARING THE LAUNDRY/SELECTING A PROGRAMME

Starting the programme

6. Starting the programme

- Touch the flashing Start/Add laundry sensor.
- The door will lock and the programme will start.
- The programme status is displayed.

Energy savings

- After 10 minutes the indicators will dim. The Start/Add laundry sensor flashes slowly. You can reactivate the indicators:
- Touch the Start/Add laundry sensor (this does not have any effect on a running programme).

Adding laundry during a programme sequence

- Laundry can be added or removed at any time, provided that the symbol is not lit up in the display.
- Touch the Start/Add laundry sensor. The following appears in the display: Please wait
- Wait until the following display lights up: Door can be opened
- Open the door and add or remove laundry.
- Close the door.
- Touch the Start/Add laundry sensor. The wash programme will continue.

7. At the end of the programme

The door is locked in the Anti-crease phase. The display will change to show:

Anti-crease/Finish and

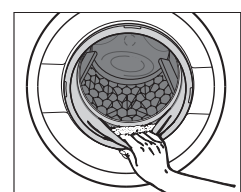
Press the Start button.

- Unlock the door either by touching the Start/Add laundry sensor or by turning the programme selector to the position.

The door will be unlocked.

- Pull the door open and unload the drum.

Items left in the drum could shrink or discolour other items in the next wash. Remove all items from the drum.



- Check the folds in the door seal for any small articles, e.g. buttons, which might be lodged there.
- Note:** For safety reasons close the door.
- Remove any used capsules from the detergent dispenser drawer.
- Tip:** Leave the detergent dispenser drawer slightly open to allow it to dry.

Extras

Extras

You can use the Extras sensor to augment the wash programmes.

Short

The programme duration is reduced. Mechanical action and energy usage are increased.

Pre-ironing

In order to reduce creasing, the laundry undergoes a smoothing process at the end of the programme. Reducing the maximum load by 50% will give a better result. Follow the instructions in the display. Small loads give a better result. The garments must be suitable for drying in a tumble dryer and suitable for ironing.

Water +

The water level in the wash and rinse stages is increased and a second rinse is carried out in the "Separate rinse/Starch" programme. You can select other functions for the Water + sensor control. These are described in "Settings".

Pre-wash

For laundry with large amounts of dirt, e.g. dust and sand.

Soak

For heavily soiled and stained items with protein stains. A duration of between 30 minutes and 6 hours can be chosen for the soak process. See "Settings" for more information. The factory default setting is 30 minutes.

Intensive

For hard-wearing laundry that is very heavily soiled. Cleaning efficiency is increased through more intense mechanical action and the application of more heat energy.

Extra quiet

This option reduces noise levels during the wash programme. Use this if you want to wash during quiet periods (for instance, when children are sleeping). The final spin is automatically reduced to (Rinse hold). The programme duration is increased.

Extra gentle

Drum rotation and wash duration are reduced. Lightly soiled fabrics are washed more gently.

AllergoWash

This option should be used where high standards of hygiene are required. More energy is used to lengthen temperature holding times and more water is used to increase rinsing efficiency. The items must be suitable for drying in a tumble dryer and suitable for ironing.

ADDING LAUNDRY

Programme chart

Programme	Load (in kg)	Temperature	Items	Extras
Cottons	9.0		Normally soiled cotton garments. These settings are the most efficient in terms of energy and water consumption for washing cottons.	A, B, C, D, E, F, G, H, I
Cottons	9.0	Cold to 90°C	Cottons, linens or cotton mix fabrics, e.g. table linen, towelling, underwear, T-shirts etc.	A, B, C, D, E, F, G, H, I
Minimum iron	4.0	Cold to 60°C	Synthetic, mixed fibre and easy care cotton.	A, B, C, D, E, F, G, H, I
Delicates	3.0	Cold to 60°C	Delicate garments made from synthetic fibre, mixed fibre, rayon and viscose.	A, B, C, D, E, F, G, H, I
Woolens	2.0	Cold to 40°C	Machine-washable or hand-washable wool or wool blend fabric. If the care label does not specify a temperature, wash using the cold setting.	G
Silks	1.0	Cold to 30°C	Silks and other handwashable fabrics with no wool content. e.g. satin, lace and silk.	G
Shirts	1.0/2.0	Cold to 60°C	Shirts and blouses made of cotton and mixed fibre. If the preset Pre-ironing Extra is switched off, the maximum load capacity is increased to 2.0 kg.	A, B, C, D, E, F, G, H, I
MobileStart	-	-	The Miele@mobile App is used for selecting programmes and operating the machine.	-
Express 20	3.5	Cold to 40°C	Cotton garments that have hardly been worn or are only very lightly soiled.	A, B
Dark garments/Denim	3.0	Cold to 60°C	Black and dark garments made from cotton, mixed fibres and denim.	A, B, C, D, E, F, G, H, I
ECO 40-60	9.0		For moderately soiled cotton garments A laundry load consisting of mixed cottons that are intended for washing at 40°C or 60°C can be washed in the same wash cycle.	
Proofing	2.5	40°C	For treating microfibre fabric, skiwear and table linen made from mainly synthetic fibres to provide a water and dirt resistant finish.	-
Outerwear	2.5	Cold to 40°C	Performance outerwear (e.g. jackets and trousers) made from membrane fabric such as Gore-tex®, SYMPATEX®, WINDSTOPPER® etc.	A, C, D, E, F, G, H
Sportswear	3.0	Cold to 60°C	Sportswear such as jersey shirts and leggings, and microfibre and fleece garments.	A, C, D, E, F, G, H, I
Automatic plus	6.0	Cold to 40°C	Mixed loads of garments sorted according to colour which are suitable for the Cottons and Minimum iron programmes.	A, B, C, D, E, F, G, H, I
Separate rinse/Starch	8.0	-	For rinsing items washed by hand. For starching table cloths, serviettes and workwear.	C
Drain/Spin	-	-	Drain only: Select 0 rpm for the spin speed.	-
Clean machine	No load	85°C	With frequent washing at low temperatures there is a danger of a build-up of bacteria in the washing machine. Cleaning the washing machine will significantly reduce bacteria, mould, and biofilm, and prevent the build-up of unpleasant odours.	-

A = Short; B = Pre-ironing; C = Water+, D = Pre-wash, E = Soak, F = Intensive; G = Extra quiet; H = Extra gentle; I = AllergoWash

PROGRAMME CHART

Detergent

Miele recommended detergents

Programmes	Miele UltraPhase 1 and 2	Miele capsules
Cottons	✓	-
Minimum iron	✓	-
Delicates	✓	✓
Woolens	-	✓
Silks	-	✓
Shirts	✓	-
Express 20	✓	-
Dark garments/Denim	✓	✓
ECO 40-60	✓	-
Sportswear	-	✓
Automatic plus	✓	-
Separate rinse/Starch	-/-	-/-

✓ Recommended

- Not recommended

Specialist detergents (e.g. WoolCare)

Fabric care (e.g. fabric softener)

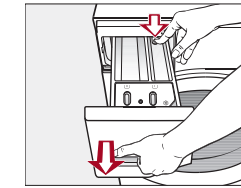
Additive (e.g. booster)

Cleaning and care

Cleaning the detergent dispenser drawer

Washing at low temperatures and the use of liquid detergent can lead to a build-up of mould and bacteria in the detergent dispenser drawer.

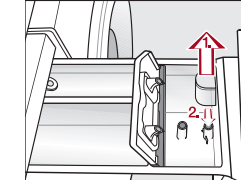
- For hygiene reasons, clean the entire drawer at regular intervals.



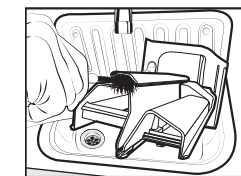
- Pull out the detergent dispenser drawer until a resistance is felt.

- Press down the release button and, at the same time, pull the drawer right out of the machine.
- Clean the detergent drawer with warm water.

Cleaning the siphon tube and the fabric softener channel



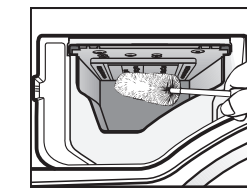
- Clean the siphon tube in the same way.
- Refit the siphon.



- Clean the fabric softener channel using a brush and warm water.

⚠ Liquid starch can cause the siphon to become clogged. Make sure that you clean the siphon and siphon tube particularly thoroughly after using liquid starch a few times.

Cleaning the detergent dispenser drawer housing



- Use a bottle brush to remove detergent residues and limescale from the jets inside the detergent dispenser drawer housing.

Cleaning the drum (Hygiene info)

Washing at low temperatures and/or using liquid detergents can cause bacteria and odours to build up in the washing machine. Use the Clean machine programme to clean the machine. Note the message in the display:

- Hygiene info: Run a programme at min. 75°C or "Clean machine" programme

Cleaning the TwinDos system

⚠ Damage resulting from dried washing detergent. If the system has not been used for a long time (more than two months), the detergent in the hoses can become viscous or dry out. The hoses can become blocked and would then need to be cleaned by a service technician. Clean the TwinDos system.

To clean the system, a refillable TwinDos container is required (sold separately), available online at shop.miele.com.

Problem solving guide

Some of the messages in the display are more than one line long. Touch the V or ^ sensor to read them in full.

Message	Possible cause and remedy
The control panel remains dark.	<ul style="list-style-type: none">There is no power to the machine.Check whether the mains plug is plugged in and switched on.Check whether the fuse or circuit breaker has tripped. <p>The washing machine has switched off automatically to save energy.</p> <ul style="list-style-type: none">Switch the washing machine on again by turning the programme selector.
Door lock. Service	<p>The door is not closed properly. The door lock could not engage.</p> <ul style="list-style-type: none">Close the door again.Restart the programme. If the fault message appears again, contact Miele.
Check drainage. See	<p>The water outlet is blocked or restricted. The drain hose has been fixed too high.</p> <ul style="list-style-type: none">Clean the drain filter and the pump.Check whether the maximum delivery head of 1 m has been exceeded.
Water intake. See	<p>The water inlet is blocked or restricted.</p> <ul style="list-style-type: none">Check whether the tap is turned on properly.Check whether the inlet hose is kinked.Check whether there is sufficient water pressure.
Waterproof syst. Service.	<p>The filter in the water inlet is blocked.</p> <ul style="list-style-type: none">Clean the filter (see the operating instructions).
	<p>There is a fault.</p> <ul style="list-style-type: none">Disconnect the washing machine from the main electricity supply, either by switching it off at the wall socket and withdrawing the plug, or by disconnecting it at the circuit breaker.Wait at least 2 minutes before reconnecting the washing machine to the main electricity supply.Then switch the washing machine on again.Restart the programme.If the fault message appears again, contact Miele.
Door jammed. Service.	<p>The door lock has jammed.</p> <ul style="list-style-type: none">Call Miele.

Message	Possible cause and remedy
Check detergent	<p>Excessive foam has built up during washing.</p> <ul style="list-style-type: none">Check the amount of detergent dispensed.With automatic detergent dispensing, check the dosage amount set.Observe the instructions on the detergent packaging and the degree of soiling of the laundry.If necessary, reduce the dosage amount by increments of 10%.
Hygiene information: Run a programme at min. 75°C or "Clean machine" programme	<p>A programme using a temperature above 60°C has not been run for a long time.</p> <ul style="list-style-type: none">Turn the programme selector to <i>Further programmes</i>/ and select the Clean machine programme in the Care submenu.Run the Clean Machine programme using Miele IntenseClean or a universal powder detergent. <p>This will clean the washing machine and prevent a build-up of bacteria and odours.</p>
Levelling the machine	<p>The <i>Pre-ironing</i> Extra which runs at the end of the programme could not be carried out properly.</p> <ul style="list-style-type: none">Check whether the washing machine is aligned correctly as described in "Installation and connection – Levelling the machine".Check whether the maximum delivery head of 1 m has been exceeded. <p>If the fault message appears again, contact Miele. The washing machine can still be used, however without the <i>Pre-ironing</i> Extra.</p>
UltraPhase 1 almost empty Only a few more programmes are possible	<p>The detergent in the cartridge is running low. There are between 4 and 8 wash cycles remaining.</p> <ul style="list-style-type: none">Order a new cartridge.
Use TwinDos or start Maintenance See	<p>TwinDos or automatic dispensing via compartment ① and/or ② has not been used for a long time.</p> <ul style="list-style-type: none">Use TwinDos for one of your next loads.Carry out the TwinDos maintenance programme as described in "Cleaning and care - TwinDos maintenance".
TwinDos maintenance for compartment ① must be started See	<p>TwinDos or automatic dispensing via compartment ① and/or ② has not been used for a long time. It is possible that detergent has dried inside the hoses.</p> <ul style="list-style-type: none">Carry out the TwinDos maintenance programme immediately as described in "Cleaning and care - TwinDos maintenance".

The messages will appear at the end of the programme and when the washing machine is switched on and need to be confirmed with the OK sensor.



Quick Start Guide
Washing machine



These short instructions are not a substitute for the operating instructions supplied with the appliance. Please read the operating instructions supplied with your washing machine before using it for the first time and take note of the Warning and Safety instructions, as well as the full descriptions on how to use your appliance.

PROBLEM SOLVING GUIDE