

PG 8581, PG 8591 UNDERCOUNTER WASHER-DISINFECTORS

Miele's washer-disinfectors PG 8581 and PG 8591 for dental applications stand for excellence in hygiene and safety in the reprocessing of dental instruments – offering cassette-ready solutions for processing up to 24 medium cassettes in a load. For spotlessly clean results in your daily work!



- Automated washer-disinfector including a pre-wash
- Targeted application General Practice, Oral Surgery, Orthodontics
- Rear basket docking
- Variable Speed pump
- Liquid Dispensing
- Multi-stage filtration system
- Spray arm monitoring
- Neutralization wash block for passivation of instruments
- Thermal disinfection at 93°C (199°F) for 5 min.
- PG 8581 ECO Dry - AutoOpen function
- PG 8591 DryPlus - Hot air HEPA drying*
- PG 8591 External DOS pump*
- PG 8581/91 240V version*

*CDN version only

Test Certificate

- cCSAus Certificate
- Class II medical device
- Compliant with EN ISO 15883

Business Benefits



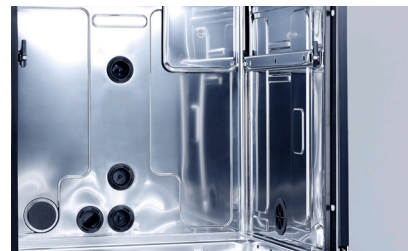
- Flexibility of the chamber design makes it ideal for cleaning and disinfecting dental instruments needs for General Practice, Oral Surgery and Orthodontics
- Standard setup includes loading capacity up to 18 medium sized cassettes per cycle, open baskets for loose instruments and mesh-enclosed basket for smaller items
- A wide range of interchangeable inserts available, including a specialized direct-injection module for handpieces (CDN only)



Labor Savings



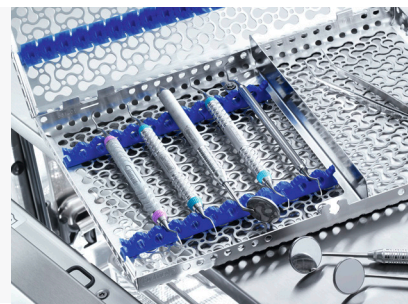
- Rear basket docking system guarantees a streamlined and efficient water and air circuit usage
- Variable-speed pump and heater element for perfect spray pressure in all program phases
- No pre-soak, gel or foam preparation needed, thus saving labor resources
- Built in Germany and factory tested for 15,000 operating hours



Exceptional Protection



- Washer-disinfector, including a pre-wash offers safe and reliable disinfection of instruments
- With thermal disinfection, post handling of dental instruments are safer for staff personnel
- Passivation of instruments thanks to the neutralization wash block
- ProCare Dent process chemicals form the basis for the thorough and gentle treatment of instruments



For more information on product, scan the QR code.



For more information on product, scan the QR code.



PG 8581, PG 8591 UNDERCOUNTER WASHER-DISINFECTORS



PG 8581
10249980
(62858107CDN)
(62858127CDN) 240V*

PG 8591*
(62859102CDN)
(62859122CDN) 240V

*CDN version only

Program	Max. Temperature	Cycle Time	Drying	Total Water Consumption [L]
PG8581				
Vario TD Dental	199°F (93°C)	FR 48 min.	5 min. Auto Open	46.1
PG8591*				
<i>CDN only</i>				
Vario TD Dental	199°F (93°C)	FR 48 min.	52 min. Dry Plus	46.1

Legend:
FR - Final Rinse

Unit Dimensions

Machine dimensions H x W x D [mm, in.]	835, 32 7/8 x 600, 23 5/8 x 600, 23 5/8	Chamber size [L, cu.ft]	145, 5.12
Usable wash cabinet H x W x D [mm, in.]	520, 20 1/2 x 530, 20 7/8 x 520 20 1/2		

Electrical

Default	2AC 208V 30A 60Hz / 6.2KW / 3 x AWG 10; NEMA L6-30R required on site	Alternate 2AC 240V 30A (CDN only)
Option	3AC 208V 20A 60Hz	

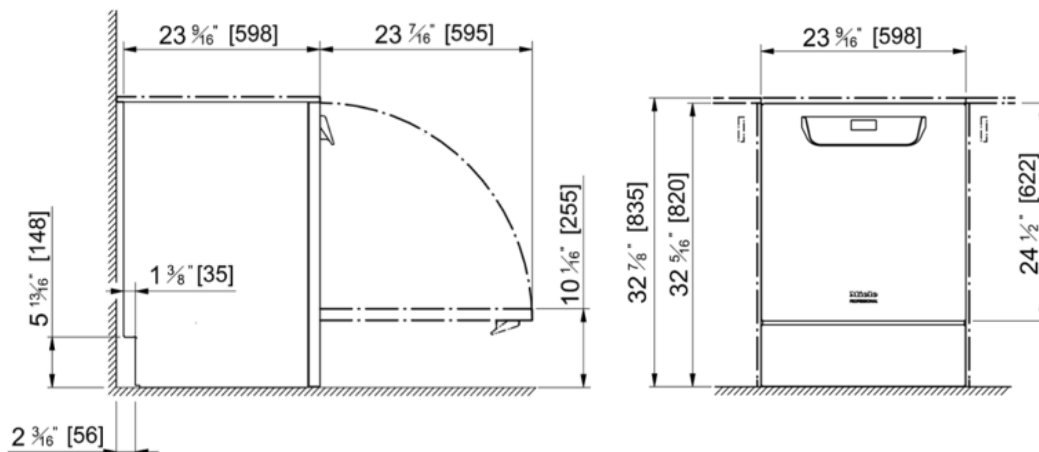
Plumbing

Cold water	2 x 3/4 in. MGHT required on site / Flow rate 2 gpm (7.5L/min.) / Water pressure 14.5-145 psi (100-1,000 KPa), pressurized
Hot water	1 x 3/4 in. MGHT required on site / Flow rate 2 gpm (7.5L/min.) / Water pressure 5.8-145 psi (40-1,000 KPa), pressurized
DI water	1 x 3/4 in. MGHT required on site / Flow rate 2 gpm (7.5L/min.) / Water pressure 4.4-145 psi (30-1,000 KPa), pressurized. Below 29 psi = booster pump
Drain connection	1 x 3/4 in. Barbed connector required on site / Flow rate 4.2 gpm (16L/min.)

Shipping

Dimensions H x W x D [mm, in.]	920, 34 1/4 x 670, 26 3/8 x 740, 29 1/2	Weight [kg, lbs.]	74, 163
--------------------------------	---	-------------------	---------

For more information, refer to Installation Manual.



Please refer to the installation plan for connections.