



Installation plan
Commercial flatwork ironer
(electrically heated)
PRI318 EL
PRI418 EL
PRI421 EL

To avoid the risk of accidents or damage to the machine, it is **essential** to read these instructions before it is installed and used for the first time.

en-GB



Installation notes	4
Installation requirements	4
Operating conditions	4
Floor anchoring	4
Electrical connection	4
Ducting	5
PRI318 EL (electrically heated)	7
Dimensions.....	7
Installation	8
Installation	9
Technical data	10
Voltage variants/electrical data	10
Exhaust air.....	10
Dimensions/weight.....	11
Emissions data	11
Floor anchoring	11
PRI418 EL (electrically heated)	12
Dimensions.....	12
Installation	13
Installation	14
Technical data	15
Voltage variants/electrical data	15
Exhaust air.....	15
Dimensions/weight.....	16
Emissions data	16
Floor anchoring	16
PRI421 EL (electrically heated)	17
Dimensions.....	17
Installation	18
Installation	19
Technical data	20
Voltage variants/electrical data	20
Exhaust air.....	20
Dimensions/weight.....	21
Emissions data	21
Floor anchoring	21

Installation notes

Installation requirements

The flatwork ironer must only be set up by a Miele authorised and trained service technician or an authorised dealer.

- ▶ This flatwork ironer must be installed in accordance with all relevant regulations and standards. Local energy supplier regulations must also be observed.
- ▶ This flatwork ironer must only be operated in a room that has sufficient ventilation and which is frost-free.

Operating conditions

In general, the operating conditions of DIN 60204 and EN 60204-1 apply.

- Ambient temperature: +5 °C to +40 °C
- Humidity: 10 % to 85 %
- At +21 °C ambient temperature, the maximum permissible relative humidity is 70 %.
- Maximum height above sea level of location site: 1000 m

⚠ The ironer must not be operated in the same room as dry-cleaning equipment using perchloroethylene or solvents containing CFCs. Collector motor sparking may convert solvent vapours into hydrochloric acid which can lead to consequential damage. Ensure adequate ventilation is present in the room in which the ironer is installed whilst it is being used.

Floor anchoring

Measures to secure the ironer in place on the floor are essential.

The ironer must be secured to the floor after installation using the plugs and screws supplied.

The fittings supplied are for bolting the machine to a concrete floor. For other types of flooring, please purchase suitable fastening materials separately.

Electrical connection

The electrical connection must be carried out by a qualified electrician who must ensure that all electrical work is carried out in accordance with applicable regulations and standards.

It is recommended to connect the ironer to the electrical supply via a suitably rated plug and socket.

The electrical connection and wiring diagram are located behind the mounting flap of the right-hand side column.

The required voltage, rated load and external fuse rating can be found on the data plate on the flatwork ironer.

Connection to a supply voltage other than the one quoted on the data plate can lead to functional faults and damage to the flatwork ironer.

Before connecting the flatwork ironer to the electricity supply, please ensure that the mains supply voltage complies with the values given on the data plate.

The electrical equipment of the flatwork ironer complies with standards IEC 61000-3-12, IEC/EN 60335-1, IEC/EN 60335-2-44, EN ISO 10472-1 and EN ISO 10472-5.

For ease of servicing and maintenance the ironer should be installed with a suitably rated plug and socket.

In the case of unfavourable electrical conditions, the flatwork ironer may lead to interfering voltage fluctuations. If the mains impedance is greater than 0.265 ohm at the connection point to the public mains network, additional measures may be required before the appliance can be properly operated using this connection. The mains impedance can be requested from the local power supply company if necessary.

The plug connector or isolator switch should be easily accessible at all times.

If the flatwork ironer is disconnected from the electricity supply, the disconnecter must be lockable or the point of disconnection must be monitored at all times.

If it is necessary to install a residual current device (RCD) in accordance with the local regulations, a type-A residual current device can be used.

If the machine is hard wired, an all-pole means of deactivation must be installed. Switches with a minimum contact gap greater than 3 mm are suitable disconnectors. These include circuit breakers, fuses and contactors (VDE 0660).

Ducting

The warm and moist exhaust air of the ironer must be conducted outside or to a suitable venting duct over the shortest path possible.

The exhaust air ducting must not be channelled into a chimney or flue already in use for any gas-, coal- or oil-burning installation.

The exhaust ducting for the ironer must be installed separately from the exhaust ducting of any tumble dryers.

The exhaust ducting must be laid in such a way that air flow is not hindered (few bends, short lines, well-made connections and transitions). Do not install any filters or louvres into the ducting.

Since the relative humidity can be up to 100 %, suitable measures must be taken to prevent condensate from flowing back into the flatwork ironer.

If the machine fan is not powerful enough to remove the moist air, a suitably powerful additional fan must be installed in the shaft or the roof outlet on-site.

Make sure that a sufficient air quantity is fed to the room in which the appliance is installed (e.g. non-lockable ventilation openings).

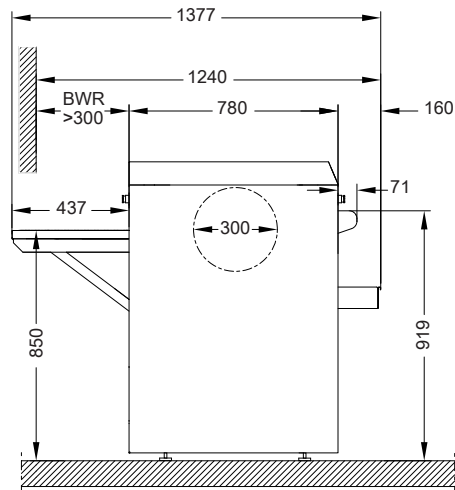
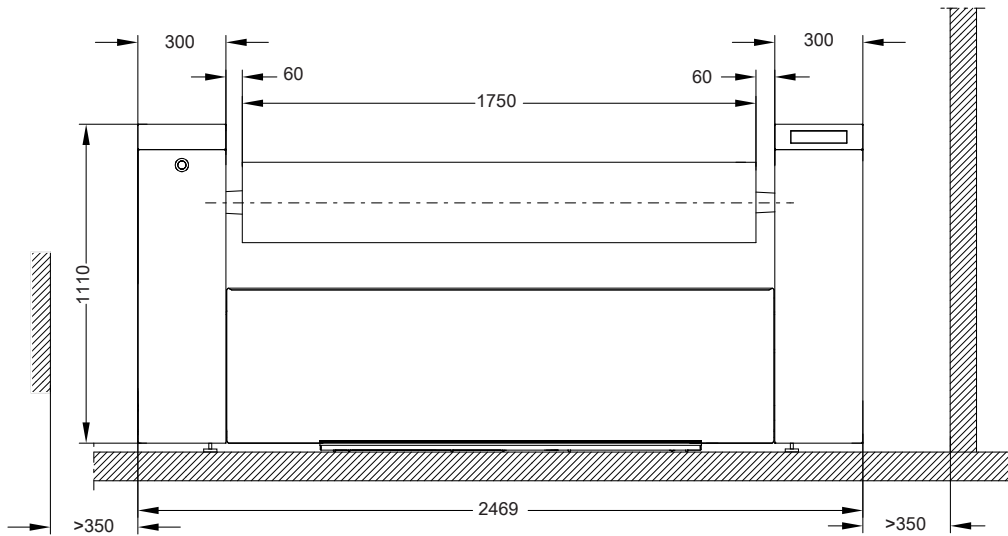
If the exhaust ducting is leading upwards, a condensate drain hole with a diameter of 3–5 mm must be provided at the lowest point.

Installation notes

The on-site ducting system and the exit point to the outside must be checked on a regular basis for a build-up of lint. Clean them if required.

The end of ducting leading outside must be protected against the elements, e.g. with a downward-facing 90° bend, without any grilles or louvres fitted. The ironer must not exhaust into a plenum box.

Dimensions



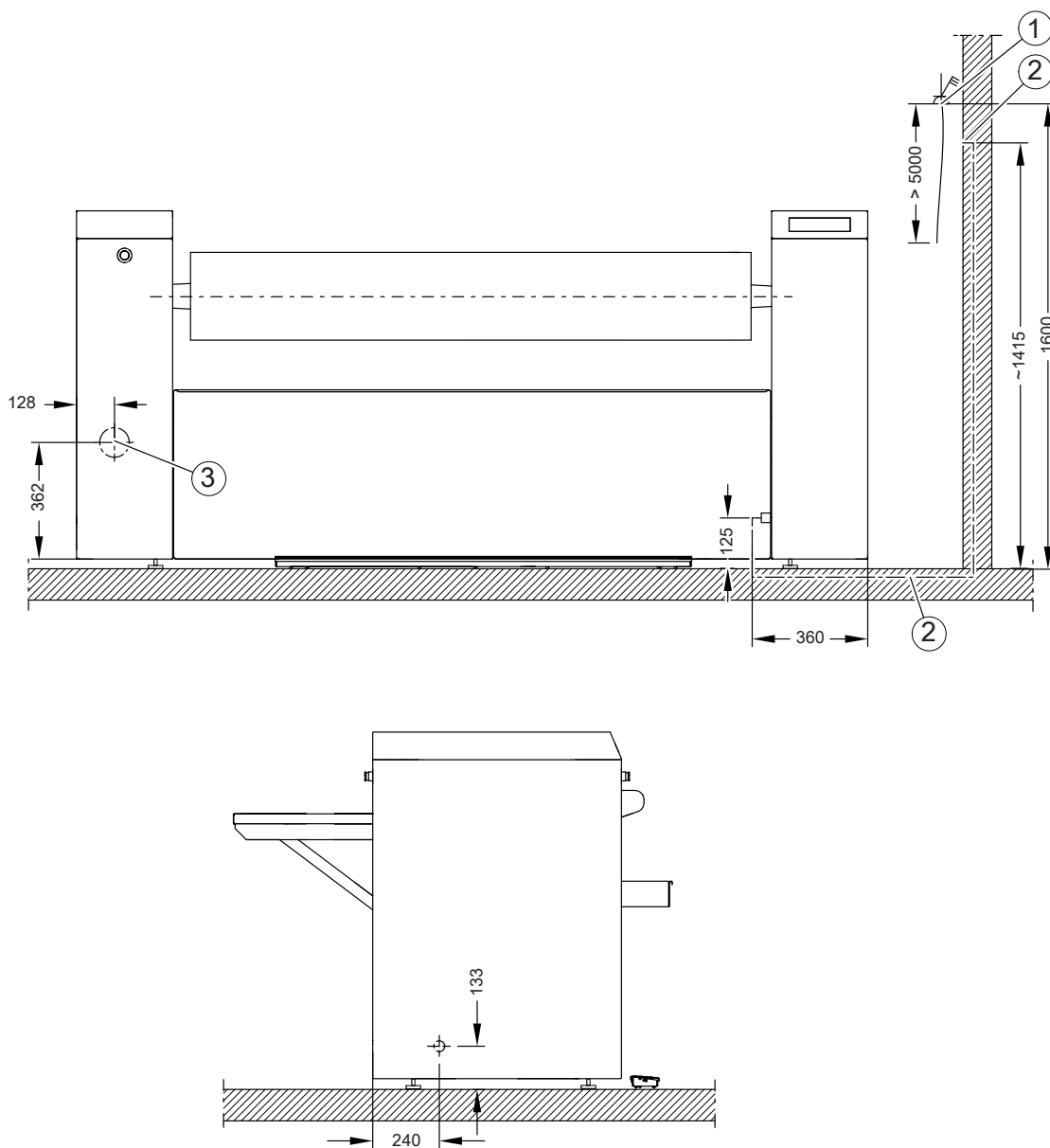
Dimensions quoted in millimetres

BWR Laundry return feed kit

Optional feature which allows the laundry to be removed from the front once it has been ironed.

PRI318 EL (electrically heated)

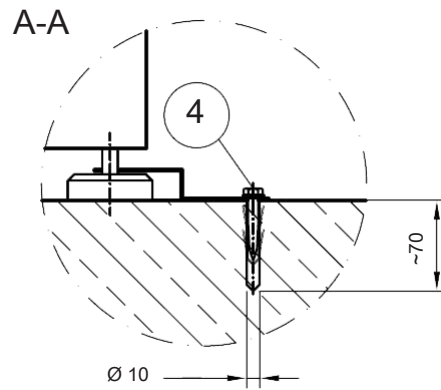
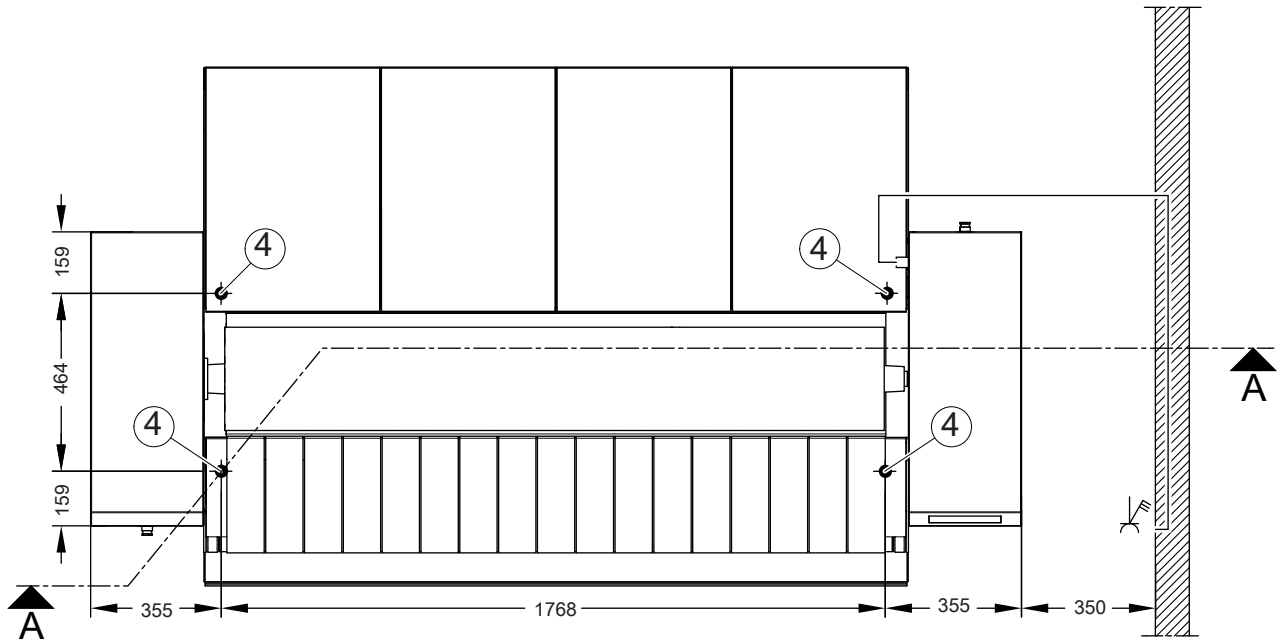
Installation



Dimensions quoted in millimetres

- ① Electrical connection
- ② Electrical conduit
For laying the electrical connection cable within the building structure.
- ③ Vent connection

Installation



Dimensions quoted in millimetres

④ Drill hole/anchor point

PRI318 EL (electrically heated)

Technical data

Voltage variants/electrical data

3NAC 400 V, 50–60 Hz

Supply voltage	3NAC 400 V
Frequency	50–60 Hz
Power rating	18.3 kW
Required fuse rating (on site)	3 x 35 A
Connection cable, min. cross-section	5 x 6 mm ²
Screw thread	M32

3AC 450/440 V, 50–60 Hz

	<i>Standard connection</i>	<i>Convertible to</i>
Supply voltage	3AC 450 V	3AC 440 V
Frequency	50–60 Hz	50–60 Hz
Power rating	19.1 kW	18.3 kW
Required fuse rating (on site)	3 x 35 A	3 x 35 A
Connection cable, min. cross-section	4 x 6 mm ²	4 x 6 mm ²
Screw thread	M32	M32

3AC 230/208 V, 50–60 Hz

	<i>Standard connection</i>	<i>Convertible to</i>
Supply voltage	3AC 230 V	3AC 208 V
Frequency	50–60 Hz	50–60 Hz
Power rating	19.4 kW	16.0 kW
Required fuse rating (on site)	3 x 50 A	3 x 50 A
Connection cable, min. cross-section	4 x 10 mm ²	4 x 10 mm ²
Screw thread	M40	M40

Exhaust air

Diameter of vent connection	70 mm
Maximum exhaust air temperature (approx.)	93 °C
Fan power	0.11 kW
Fan air output (0 bar)	115 m ³ /h
Maximum permitted pressure loss	100 Pa

PRI318 EL (electrically heated)

Dimensions/weight

Overall machine width	2469 mm
Overall machine height	1110 mm
Overall machine depth	1377 mm
Height adjustment via screw feet	29 mm
Roller length	1750 mm
Roller diameter	300 mm
Largest removable part	Heater plate
Width of largest removable part	440 mm
Height of largest removable part	242 mm
Depth of largest removable part	1855 mm
Packaging width	2576 mm
Packaging height	1388 mm
Packaging depth	1096 mm
Maximum gross volume	3918 l
Maximum gross weight	492 kg
Maximum net weight	415 kg
Max. floor load in operation	4071 N

Emissions data

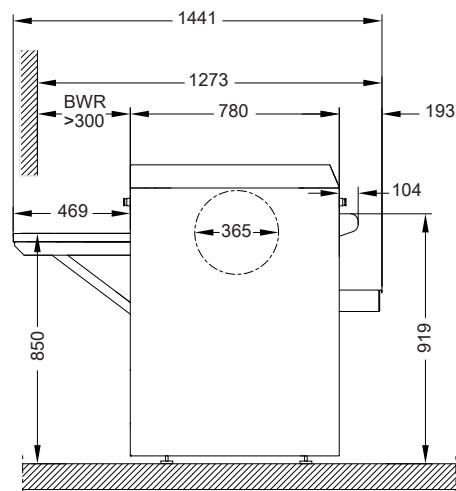
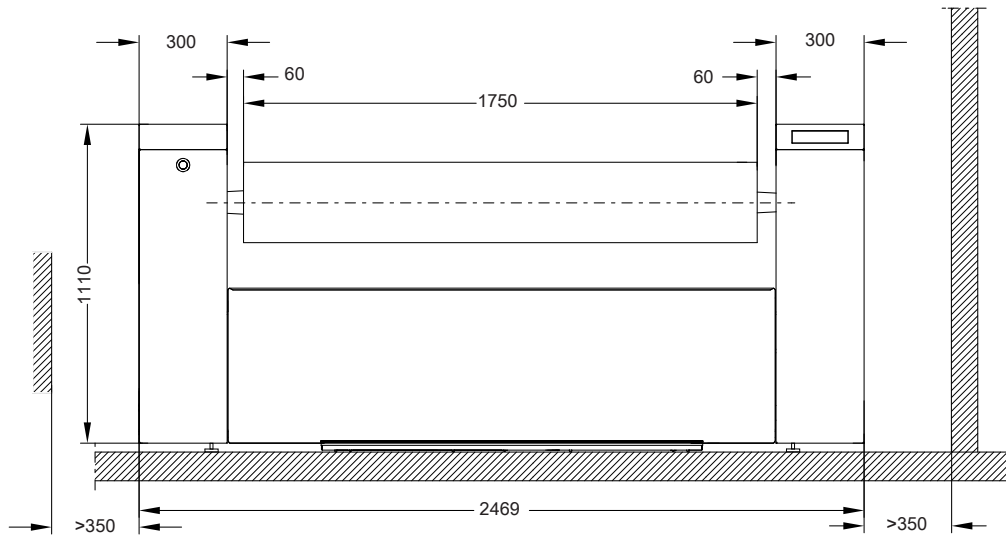
Emission sound pressure level	56 dB(A) re 20 µPa
Heat dissipation rate to installation site	10.8 MJ/h

Floor anchoring

Required anchor points	4
DIN 571 wood screw (diameter x length)	8 mm x 50 mm
Rawl plugs (diameter x length)	10 mm x 50 mm

PRI418 EL (electrically heated)

Dimensions

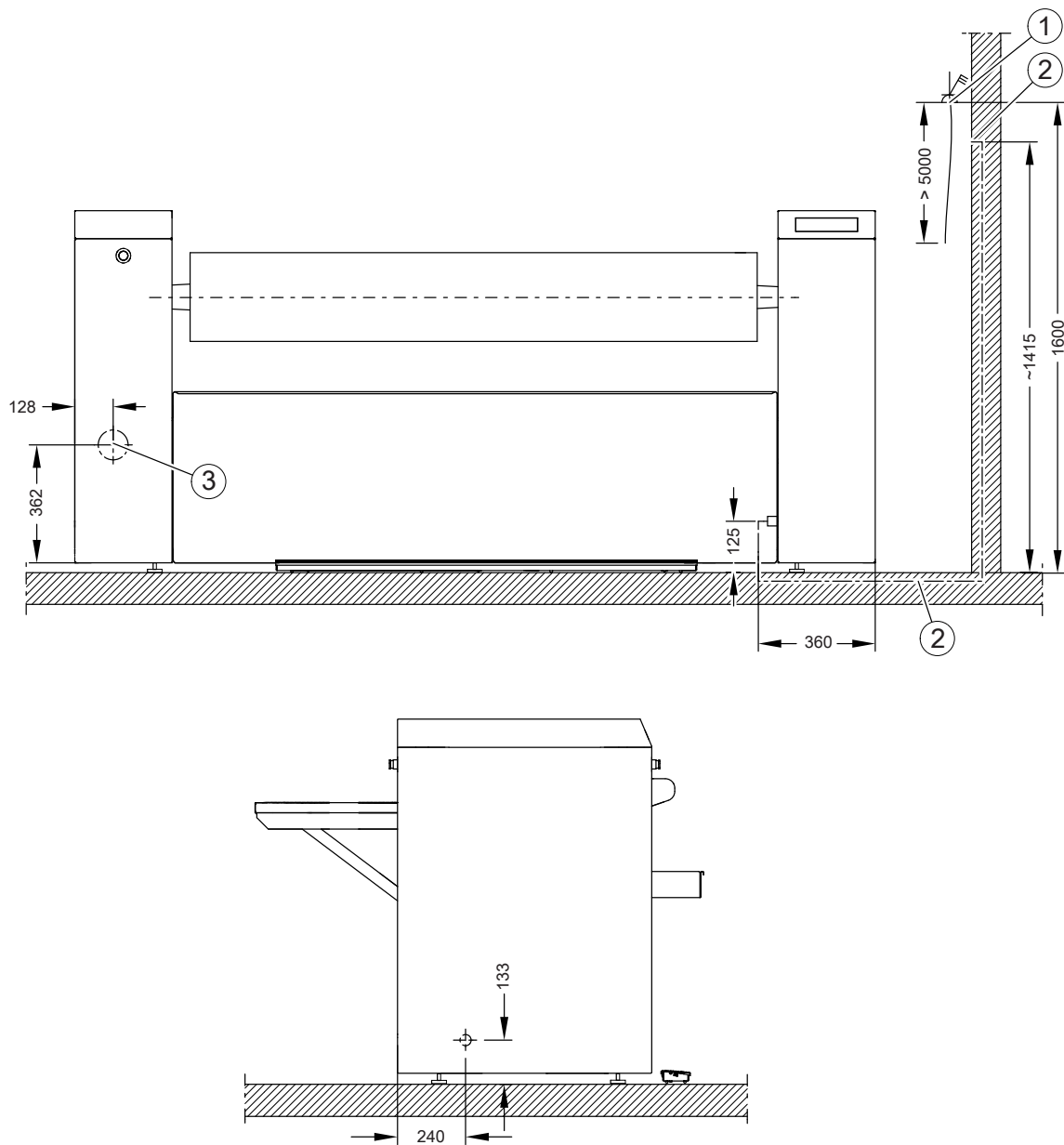


Dimensions quoted in millimetres

BWR Laundry return feed kit

Optional feature which allows the laundry to be removed from the front once it has been ironed.

Installation

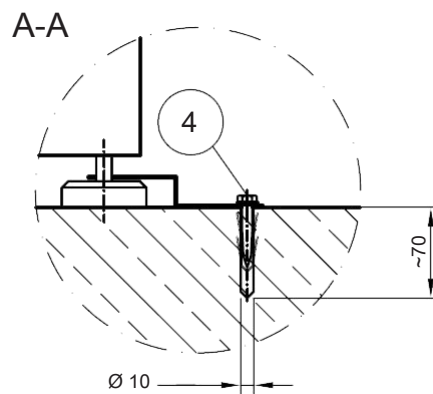
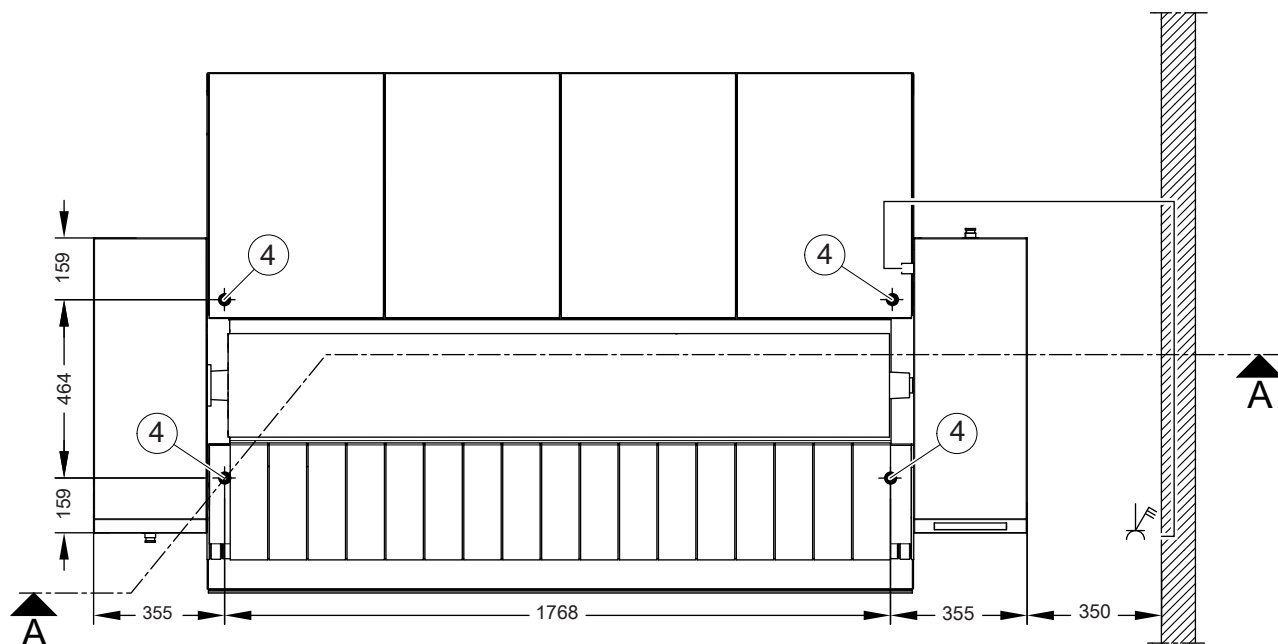


Dimensions quoted in millimetres

- ① Electrical connection
- ② Electrical conduit
For laying the electrical connection cable within the building structure.
- ③ Vent connection

PRI418 EL (electrically heated)

Installation



Dimensions quoted in millimetres

④ Drill hole/anchor point

Technical data

Voltage variants/electrical data

3NAC 400 V, 50–60 Hz

Supply voltage	3NAC 400 V
Frequency	50–60 Hz
Power rating	22.0 kW
Required fuse rating (on site)	3 x 50 A
Connection cable, min. cross-section	5 x 10 mm ²
Screw thread	M40

3AC 450/440 V, 50–60 Hz

	<i>Standard connection</i>	<i>Convertible to</i>
Supply voltage	3AC 450 V	3AC 440 V
Frequency	50–60 Hz	50–60 Hz
Power rating	23.0 kW	22.0 kW
Required fuse rating (on site)	3 x 50 A	3 x 50 A
Connection cable, min. cross-section	4 x 10 mm ²	4 x 10 mm ²
Screw thread	M40	M40

3AC 230/208 V, 50–60 Hz

	<i>Standard connection</i>	<i>Convertible to</i>
Supply voltage	3AC 230 V	3AC 208 V
Frequency	50–60 Hz	50–60 Hz
Power rating	23.4 kW	19.2 kW
Required fuse rating (on site)	3 x 63 A	3 x 50 A
Connection cable, min. cross-section	4 x 16 mm ²	4 x 16 mm ²
Screw thread	M40	M40

Exhaust air

Diameter of vent connection	70 mm
Maximum exhaust air temperature (approx.)	113 °C
Fan power	0.11 kW
Fan air output (0 bar)	115 m ³ /h
Maximum permitted pressure loss	100 Pa

PRI418 EL (electrically heated)

Dimensions/weight

Overall machine width	2469 mm
Overall machine height	1110 mm
Overall machine depth	1441 mm
Height adjustment via screw feet	29 mm
Roller length	1750 mm
Roller diameter	365 mm
Largest removable part	Heater plate
Width of largest removable part	500 mm
Height of largest removable part	270 mm
Depth of largest removable part	1855 mm
Packaging width	2576 mm
Packaging height	1388 mm
Packaging depth	1096 mm
Maximum gross volume	3918 l
Maximum gross weight	521 kg
Maximum net weight	444 kg
Max. floor load in operation	4356 N

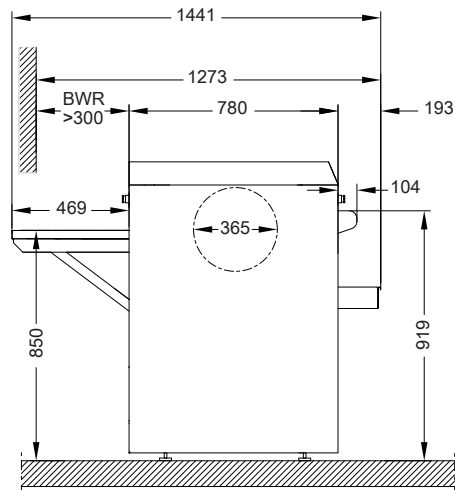
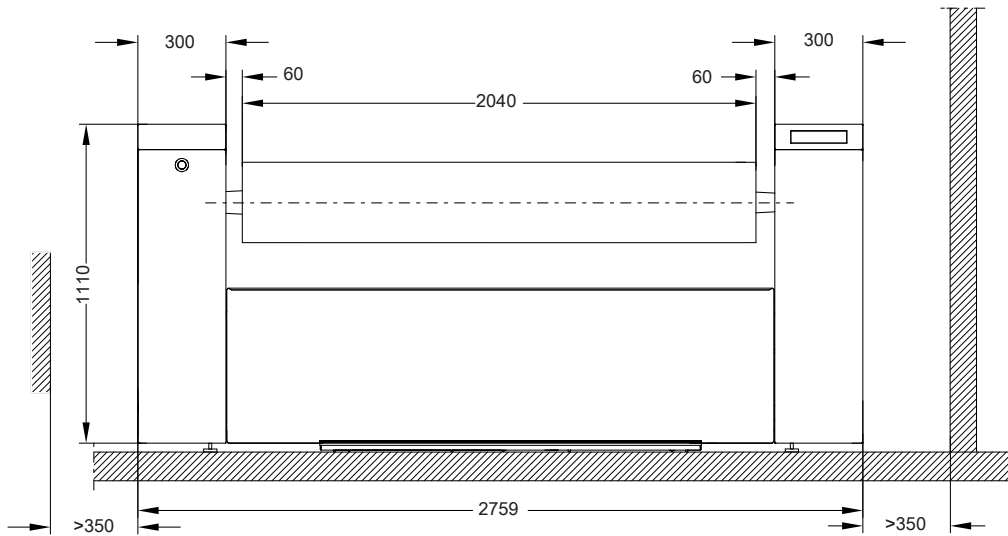
Emissions data

Emission sound pressure level	56 dB(A) re 20 µPa
Heat dissipation rate to installation site	12.6 MJ/h

Floor anchoring

Required anchor points	4
DIN 571 wood screw (diameter x length)	8 mm x 50 mm
Rawl plugs (diameter x length)	10 mm x 50 mm

Dimensions



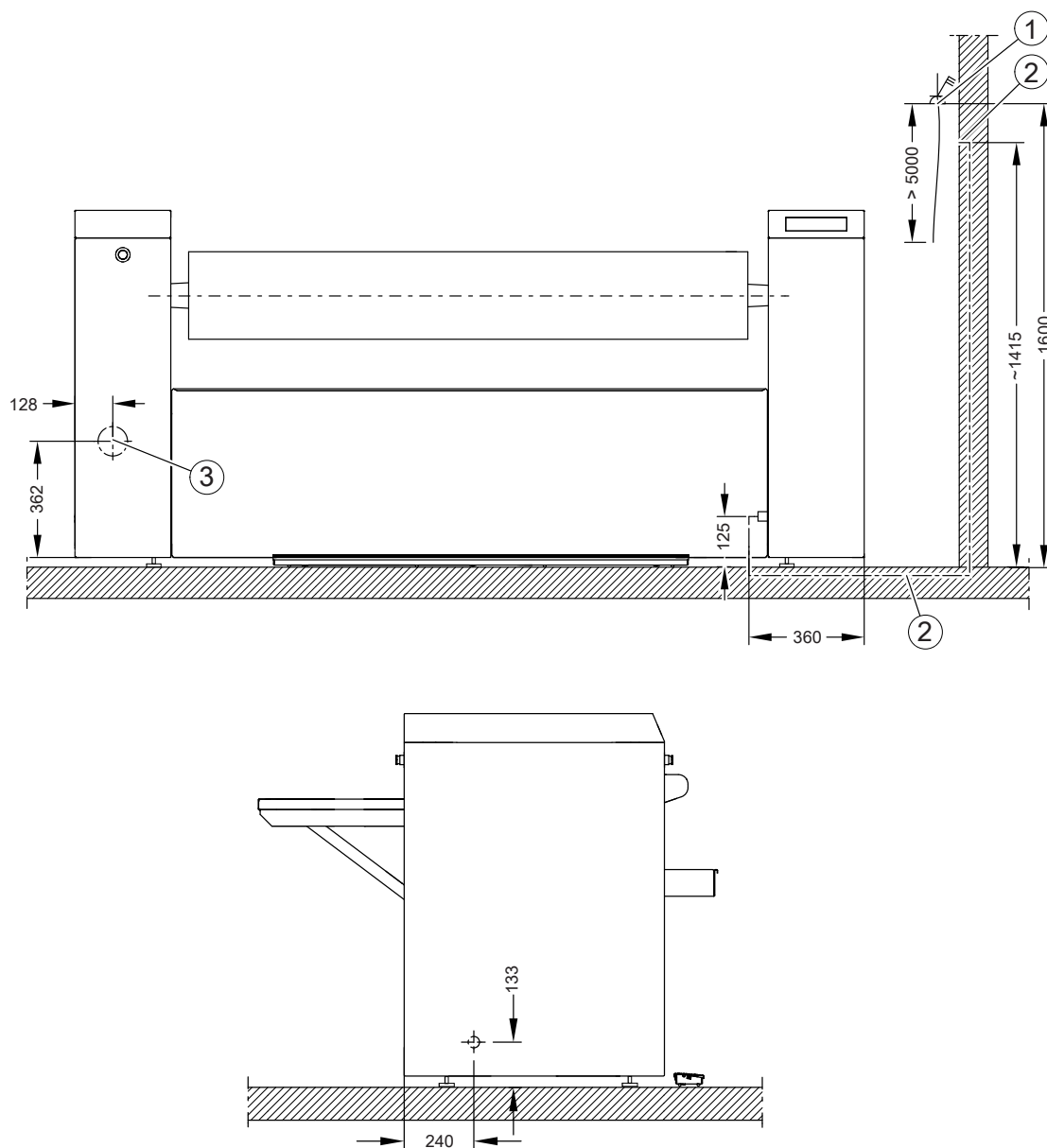
Dimensions quoted in millimetres

BWR Laundry return feed kit

Optional feature which allows the laundry to be removed from the front once it has been ironed.

PRI421 EL (electrically heated)

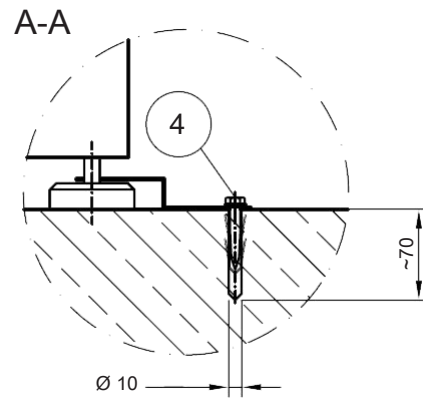
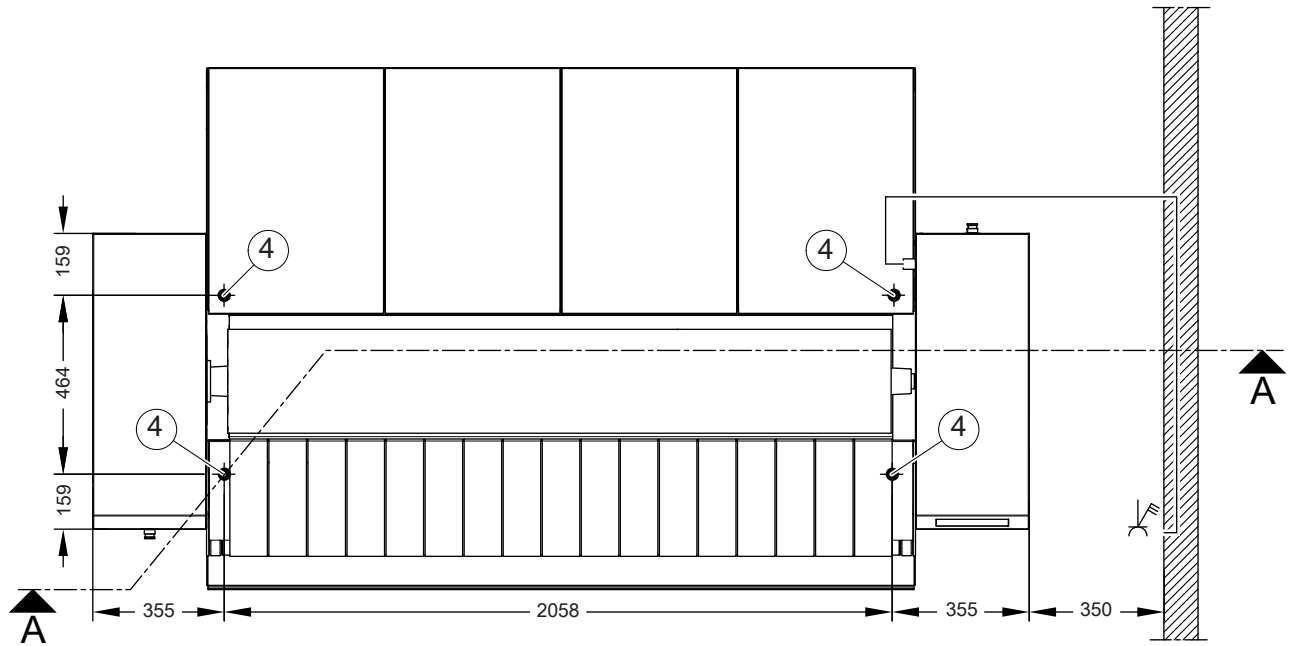
Installation



Dimensions quoted in millimetres

- ① Electrical connection
- ② Electrical conduit
For laying the electrical connection cable within the building structure.
- ③ Vent connection

Installation



Dimensions quoted in millimetres

④ Drill hole/anchor point

PRI421 EL (electrically heated)

Technical data

Voltage variants/electrical data

3NAC 400 V, 50–60 Hz

Supply voltage	3NAC 400 V
Frequency	50–60 Hz
Power rating	23.5 kW
Required fuse rating (on site)	3 x 50 A
Connection cable, min. cross-section	5 x 10 mm ²
Screw thread	M40

3AC 450/440 V, 50–60 Hz

	<i>Standard connection</i>	<i>Convertible to</i>
Supply voltage	3AC 450 V	3AC 440 V
Frequency	50–60 Hz	50–60 Hz
Power rating	24.6 kW	23.5 kW
Required fuse rating (on site)	3 x 50 A	3 x 50 A
Connection cable, min. cross-section	5 x 10 mm ²	5 x 10 mm ²
Screw thread	M40	M40

3AC 230/208 V, 50–60 Hz

	<i>Standard connection</i>	<i>Convertible to</i>
Supply voltage	3AC 230 V	3AC 208 V
Frequency	50–60 Hz	50–60 Hz
Power rating	25.0 kW	20.6 kW
Required fuse rating (on site)	3 x 63 A	3 x 63 A
Connection cable, min. cross-section	4 x 16 mm ²	4 x 16 mm ²
Screw thread	M40	M40

Exhaust air

Diameter of vent connection	70 mm
Maximum exhaust air temperature (approx.)	97 °C
Fan power	0.11 kW
Fan air output (0 bar)	115 m ³ /h
Maximum permitted pressure loss	100 Pa

PRI421 EL (electrically heated)

Dimensions/weight

Overall machine width	2759 mm
Overall machine height	1110 mm
Overall machine depth	1441 mm
Height adjustment via screw feet	29 mm
Roller length	2040 mm
Roller diameter	365 mm
Largest removable part	Heater plate
Width of largest removable part	500 mm
Height of largest removable part	270 mm
Depth of largest removable part	2145 mm
Packaging width	2866 mm
Packaging height	1388 mm
Packaging depth	1096 mm
Maximum gross volume	4359 l
Maximum gross weight	537 kg
Maximum net weight	458 kg
Max. floor load in operation	4493 N

Emissions data

Emission sound pressure level	56 dB(A) re 20 µPa
Heat dissipation rate to installation site	13.7 MJ/h

Floor anchoring

Required anchor points	4
DIN 571 wood screw (diameter x length)	8 mm x 50 mm
Rawl plugs (diameter x length)	10 mm x 50 mm

United Kingdom

Miele Co. Ltd.
Fairacres, Marcham Road
Abingdon, Oxon, OX14 1TW
Professional Sales, Tel: 0845 365 6608
E-mail: professional@miele.co.uk
Internet: www.miele.co.uk/professional

Australia

Miele Australia Pty. Ltd.
ACN 005 635 398
ABN 96 005 635 398
1 Gilbert Park Drive, Knoxfield, VIC 3180
Tel: 1300 731 411
Internet: www.miele-professional.com.au
E-mail: info@miele-professional.com.au

China

Miele (Shanghai) Trading Ltd.
1-3 Floor, No. 82 Shi Men Yi Road
Jing' an District, 200040 Shanghai, PRC
Tel: +86 21 6157 3500, Fax: +86 21 6157 3511
E-mail: info@miele.cn, Internet: www.miele.cn

Miele (Hong Kong) Limited

41/F - 4101, Manhattan Place
23 Wang Tai Road
Kowloon Bay, Hong Kong
Tel: (852) 2610 1025, Fax: (852) 3579 1404
Email: customerservices@miele.com.hk
Website: www.miele.hk

India

Miele India Pvt. Ltd.
Ground Floor, Copia Corporate Suites
Plot No. 9, Jasola
New Delhi - 110025
Tel: 011-46 900 000, Fax: 011-46 900 001
E-mail: customercare@miele.in, Internet: www.miele.in

Ireland

Miele Ireland Ltd.
2024 Bianconi Avenue
Citywest Business Campus, Dublin 24
Tel: (01) 461 07 10, Fax: (01) 461 07 97
E-Mail: info@miele.ie, Internet: www.miele.ie

Manufacturer: Miele & Cie. KG
Carl-Miele-Straße 29, 33332 Gütersloh, Germany



Miele
PROFESSIONAL

Malaysia

Miele Sdn Bhd
Suite 12-2, Level 12
Menara Sapura Kencana Petroleum
Solaris Dutamas No. 1, Jalan Dutamas 1
50480 Kuala Lumpur, Malaysia
Phone: +603-6209-0288
Fax: +603-6205-3768

New Zealand

Miele New Zealand Limited
IRD 98 463 631
Level 2, 10 College Hill
Freemans Bay, Auckland 1011, NZ
Tel: 0800 464 353
Internet: www.miele-professional.com.au
E-mail: info@miele-professional.com.au

Singapore

Miele Pte. Ltd.
163 Penang Road
04 - 03 Winsland House II
Singapore 238463
Tel: +65 6735 1191, Fax: +65 6735 1161
E-Mail: info@miele.com.sg
Internet: www.miele.sg

South Africa

Miele (Pty) Ltd
63 Peter Place, Bryanston 2194
P.O. Box 69434, Bryanston 2021
Tel: (011) 875 9000, Fax: (011) 875 9035
E-mail: info@miele.co.za
Internet: www.miele.co.za

United Arab Emirates

Miele Appliances Ltd.
Showroom 1, Eiffel 1 Building
Sheikh Zayed Road, Umm Al Sheif
P.O. Box 114782 - Dubai
Tel. +971 4 3044 999, Fax. +971 4 3418 852
800-MIELE (64353)
E-Mail: info@miele.ae, Website: www.miele.ae