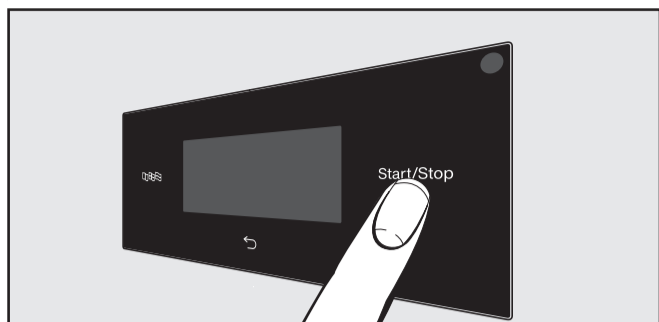
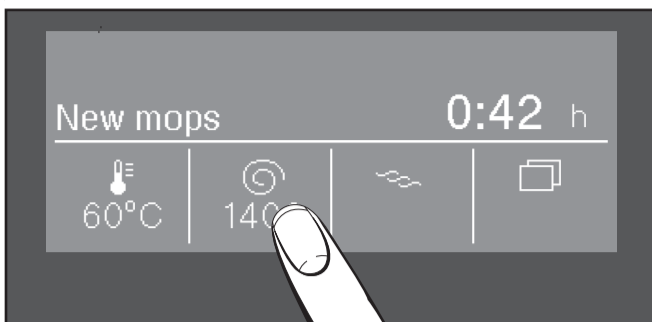


### Touch display and sensor controls

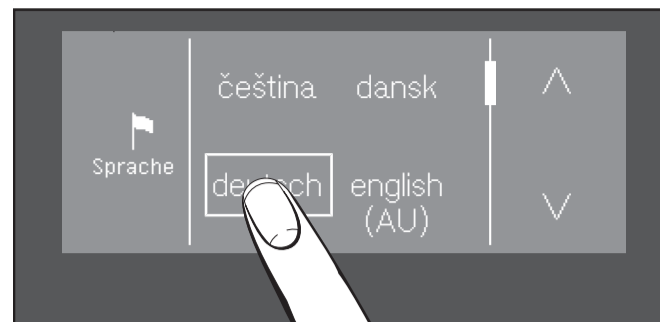


- Switch on the appliance with the button.
- The , and *Start/Stop* sensor controls and the sensor controls in the display react to finger tip contact.



You can change or activate the temperature, spin speed or Extras by touching the , and sensor controls.

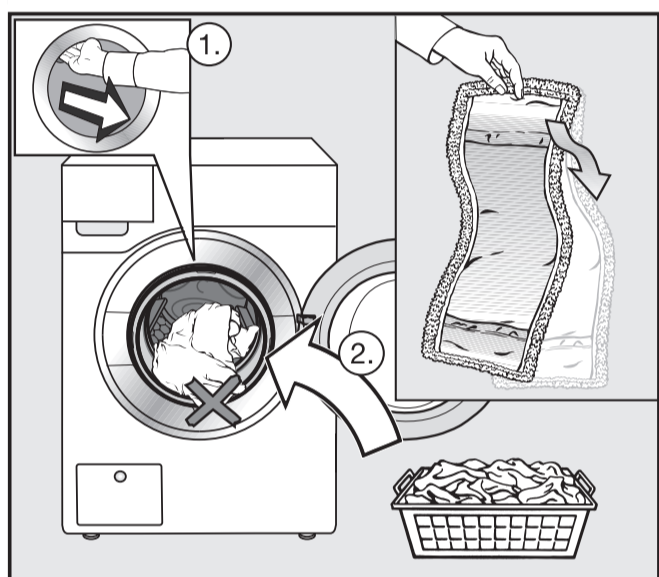
### 1 Selecting the language



- Touch the sensor control.
- Touch the or sensor control until the language you want appears in the display.
- Select the language.

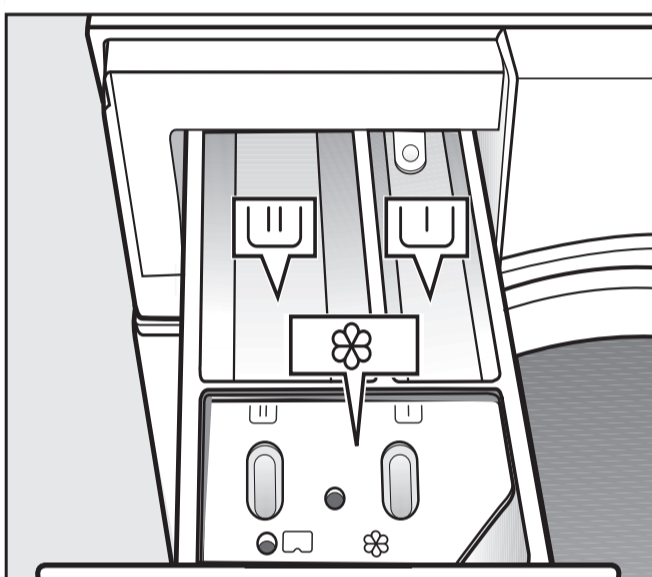
## Mops

### 2 Loading the washing machine



- Always shake mops out thoroughly before washing them.
- Open the door and put the mops inside.
- Shut the door with a gentle swing. Make sure mops do not get caught in the door.

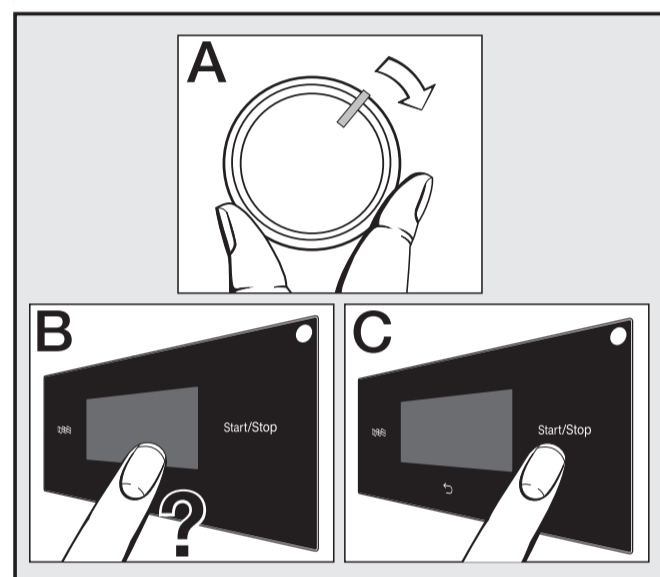
### 3 Adding detergent



- Fill compartment with detergent.
- Fill compartment with pre-treating agent.

For disinfection programmes, the and compartments can be filled with detergent.

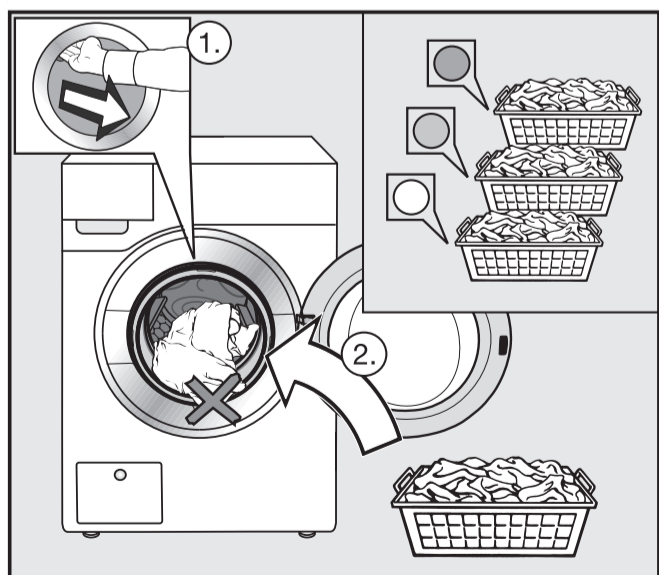
### 4 Selecting and starting the programme



- Select a programme (A).
- Select the spin speed and Extras (B).
- Touch the *Start/Stop* sensor control (C).

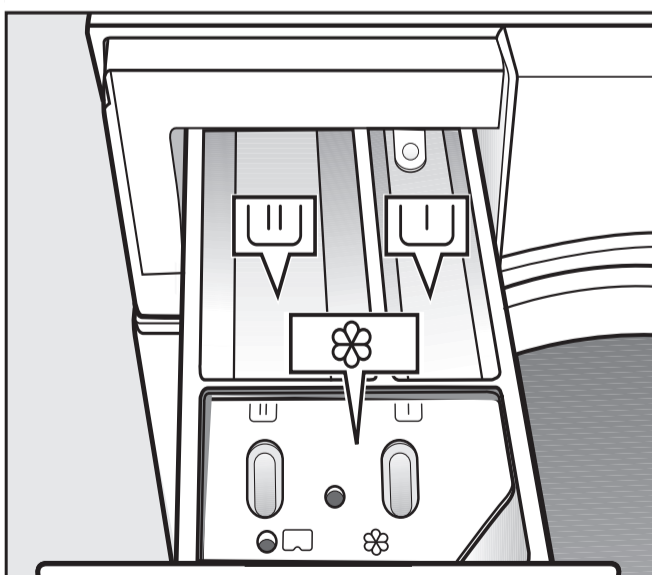
## Cleaning cloths

### 2 Loading the washing machine



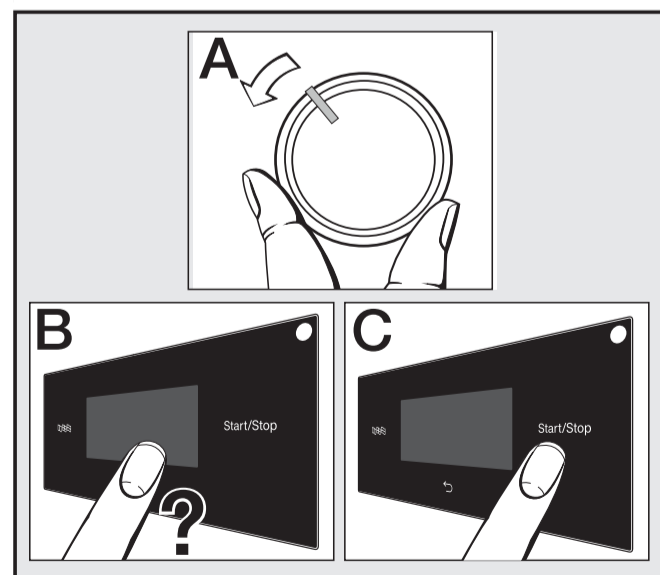
- Sort cleaning cloths by colour.
- Open the door and put the cloths inside.
- Shut the door with a gentle swing. Make sure cloths do not get caught in the door.

### 3 Adding detergent



- Fill compartment with detergent for the pre-wash, if selected.
- Fill compartment with detergent for the main wash.
- Fill compartment with pre-treating agent.

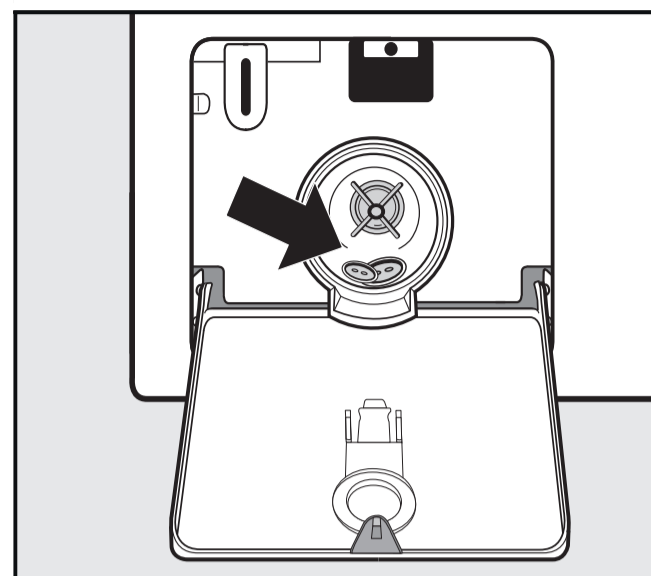
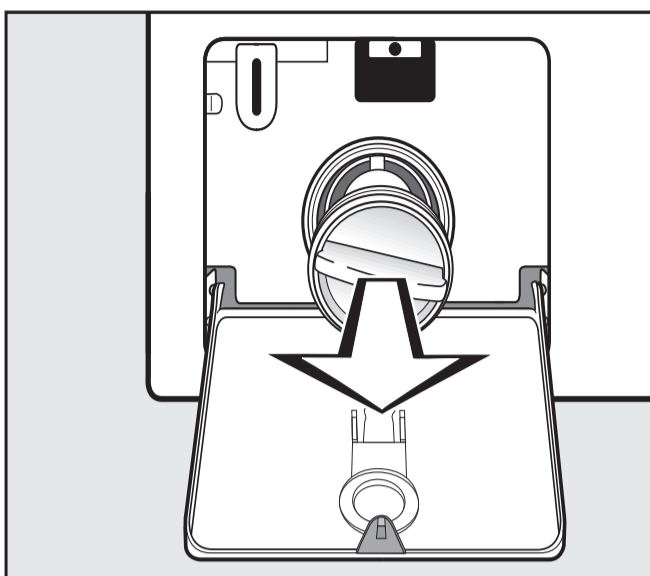
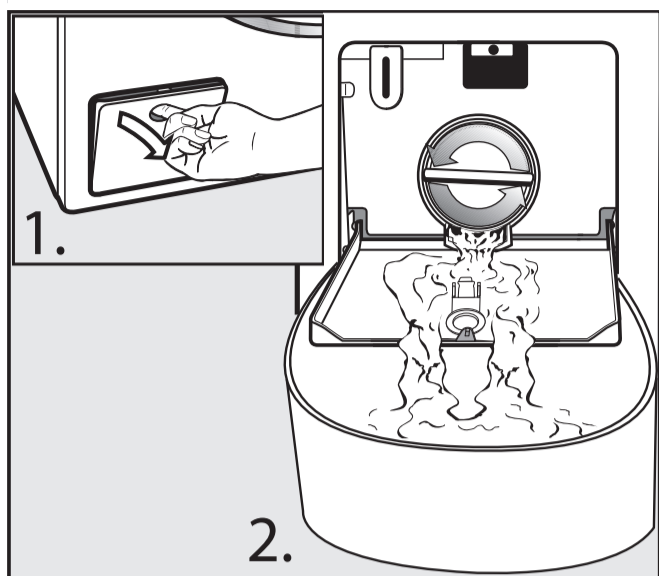
### 4 Selecting and starting the programme



- Select a programme (A).
- Select the spin speed and Extras (B).
- Touch the *Start/Stop* sensor control (C).



**Daily cleaning of the drain filter and the drain pump**



- Open the access panel to the drainage system (1).
- Slowly unscrew the drain filters to let the water out (2).
- Unscrew the drain filter completely and remove it.
- Clean the drain filter thoroughly under running water.
- Remove foreign objects and clean the interior.
- Replace the drain filter and tighten it securely.

Mop programmes		Load
<b>Mops 60 °C /  Mops plus 40 °C to 90 °C</b>		<b>max. 6.0 kg</b>
Use for	Cotton, mixed fibre or microfibre mops.	
<b>Mops – thermal disinfection</b>		<b>max. 6.0 kg</b>
Use for	Cotton, mixed fibre or microfibre mops.	
<b>Mops – chemo-thermal disinfection</b>		<b>max. 6.0 kg</b>
Use for	Cotton, mixed fibre or microfibre mops.	
<b>Cleaning cloth programmes</b>		
<b>Cleaning cloths 60 °C /  Cleaning cloths plus 40 °C to 90 °C</b>		<b>max. 3.0 kg</b>
Use for	Cotton, mixed fibre or microfibre cloths.	
<b>Thermal disinfection 85 °C/15 min</b>		<b>max. 3.0 kg</b>
Use for	Cotton, mixed fibre or microfibre cloths.	
<b>Chemo-thermal disinfection</b>		<b>max. 3.0 kg</b>
Use for	Cotton, mixed fibre or microfibre cloths.	
<b>Pads 40 °C</b>		<b>max. 1.0 kg</b>
Use for	Microfibre polishing pads and buffers.	
<b>Cottons PRO 60 °C</b>		<b>max. 6.0 kg</b>
Use for	Mixed fibre textiles (50 % cotton and 50 % polyester).	

Further programmes are described in the operating instructions.

