

Before the first use

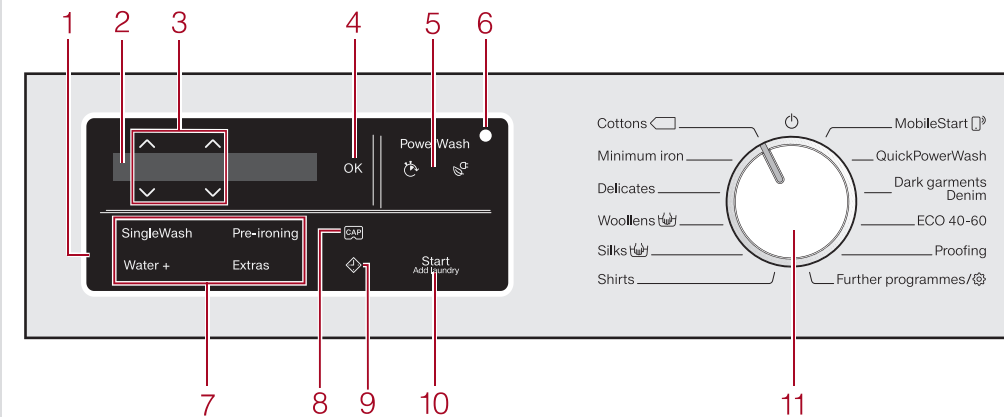
⚠ Damage resulting from incorrect installation and connection. Installing and connecting the washing machine incorrectly will cause serious damage. Please read the separate operating instructions supplied with the appliance.

⚠ Damage resulting from failure to remove the transit bars. Failure to remove the transit bars can result in damage to the washing machine and to adjacent cabinetry or appliances. Please read the separate operating instructions supplied with the appliance.

Switching on the washing machine

■ Turn the programme selector to the **Cottons** programme. The welcome tone will sound and the welcome screen will light up. The display will guide you through the initial commissioning process, which is divided into 4 steps. For further information, please refer to the separate operating instructions.

Operating the washing machine



1 Control panel

The control panel consists of a display and various sensor controls.

2 Display

The following values are displayed and/or selected in the display:

3 $\wedge \vee$ sensors

The values in the display can be changed with the $\wedge \vee$ sensors.

4 OK sensor

The OK sensor is used to confirm selected values.

5 PowerWash display with the Quick and Eco sensors

If the PowerWash indicator lights up when you select a wash programme, you can choose between three programme sequences.

6 Optical interface

For service technicians. You can supplement the wash programmes with Extras.

7 Sensors for Extras

Activates detergent dispensing with a capsule.

8 \square sensor

The \square sensor starts the Delay start function.

Operating the sensor controls

The sensor controls react to fingertip contact. Selection is possible as long as the respective sensor is illuminated. If a sensor is brightly lit, this means: **currently selected**. If a sensor is dimly lit, this means: **selection possible**.

10 Start/Add laundry sensor

Ⓐ Touching the *Start/Add laundry* sensor starts a programme. The sensor lights up constantly.

Ⓑ Once the programme has been started, the *Start/Add laundry* sensor allows you to add laundry.

11 Programme selector

For selecting programmes and switching the washing machine off.

Washing environmentally and economically

- Programmes that are more efficient with regard to energy and water consumption generally have a longer running time. By extending the programme running time, the wash temperature that is actually reached can be reduced while still providing the same wash results.
- For example, the Cottons 40°C programme has a longer running time than the Cottons 40°C or 60°C programme, but the Cottons 40°C programme is more efficient in terms of energy and water consumption.
- To get the most out of your machine, load the maximum dry load for the programme you are using.
- Use the *Express 20* programme for small, lightly soiled loads.

Preparing the laundry

1. Preparing the laundry



■ Empty all pockets. Foreign objects (e.g. nails, coins, paper clips, etc.) can cause damage to garments and components in the machine.

■ Sort the laundry by colour and by care label. Most garments have a textile care label in the collar or side seam.

■ Pre-treat stains and badly soiled areas (Please refer to the Miele website or Miele@mobile App for more information on stain removal.).

2. Selecting a programme

■ Turn the programme selector to a programme.

Programme selection

There are three possible ways to select a programme:

1. Selecting standard programmes via the programme selector

■ Turn the programme selector to the required programme. The selected programme will appear in the display. This will then be replaced by the standard display.

2. Selecting further programmes via the "Further programmes/Extras" setting and the display:

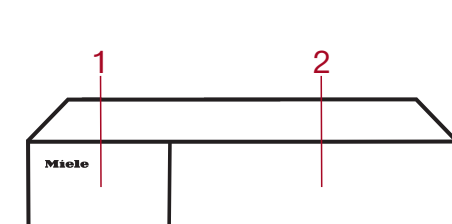
- Turn the programme selector to the *Further programmes/Extras* position. *Express 20* appears in the display.
- Touch the $\wedge \vee$ sensors until the programme you want appears in the display.
- Confirm the programme with the OK sensor.

3. Selecting programmes via the MobileStart function and the Miele@mobile App

■ Turn the programme selector to the *MobileStart* position. ■ Touch the *Start/Add laundry* sensor. The washing machine can now be operated via a mobile device using the Miele@mobile App.

Selecting a programme

3. Loading the washing machine



1 Detergent dispenser drawer

2 Control panel

3 Access to drain filter, drain pump and emergency release

4 Door

Opening the door

■ Take hold of the door and pull it open. Unfold the laundry and load loosely in the drum.

Closing the door

■ Make sure that no items are caught between the door and the seal.

■ Shut the door with a gentle swing.

4. Selecting programme settings

Selecting a temperature/spin speed

■ Touch the $\wedge \vee$ sensors above or below the temperature or spin speed value in the display until the temperature/spin speed you want appears in the display.

Selecting Extras

There are two ways of selecting Extras.

1. Directly above the sensors

■ Touch the sensor for the Extra you want. It then lights up brightly.

2. Via the Extras sensor and the display

■ Touch the *Extras* sensor. The following appears in the display: No Extras ✓ ■ Touch the $\wedge \vee$ sensors until the Extra you want appears in the display and confirm this with the OK sensor.

PowerWash display with the \square and \square sensors

PowerWash display

Normal programme sequence. ■ Do not activate the \square or \square sensors.

\square sensor (Quick)

Short programme sequence. Mechanical action and energy are increased with this option. ■ Touch the \square sensor.

\square sensor (Eco)

Energy-saving programme sequence. The wash temperature is reduced and the programme duration increased. ■ Touch the \square sensor.

Delay start \diamond

Delay start

With Delay start you can delay the start of a programme. The start of the programme can be delayed from 15 minutes up to a maximum of 24 hours.

SmartStart

The SmartStart function (only functional in selected countries) lets you define a period of time during which your washing machine will start automatically. The appliance will start on receipt of a signal, e.g. from your energy supplier, that indicates that the electricity tariff is particularly economical.

5. Adding detergent

Any detergent suitable for automatic front loading washing machines can be used with this appliance. Please observe the instructions for use and dosage on the detergent packaging. There are several options for adding detergent.

Adding detergent

■ Pull out the detergent dispenser drawer and add detergent to the compartments.

Detergent for the pre-wash

■ Detergent for the main wash, including Soak if selected

■ Fabric softener, liquid starch or capsules

Activating CapDosing

■ Touch the \square sensor.

The following appears in the display: No cap ✓

■ Touch the $\wedge \vee$ sensors until the capsule you want appears in the display.

■ Confirm the capsule with the OK sensor. See "Detergent" in the operating instructions for more information on detergents, capsules and dosage.

Using detergent tablets or pods

Always put detergent tablets or pods directly in the drum with the laundry. They cannot be added via the detergent dispenser drawer.

Starting the programme

6. Starting the programme

■ Touch the flashing *Start/Add laundry* sensor. The door will lock and the programme will start.

The programme status is displayed. ■ Energy savings After 10 minutes the indicators will dim. The *Start/Add laundry* sensor flashes slowly. You can reactivate the indicators:

■ Touch the *Start/Add laundry* sensor (this does not have any effect on a running programme).

Adding laundry during a programme sequence

Laundry can be added or removed at any time, provided that the \square symbol is not lit up in the display.

■ Touch the *Start/Add laundry* sensor. The following appears in the display:

■ Please wait

■ Wait until the following display lights up: \square Door can be opened

■ Open the door and add or remove laundry.

■ Close the door.

■ Touch the *Start/Add laundry* sensor. The wash programme will continue.

7. At the end of the programme

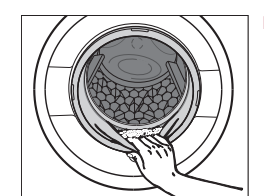
The door is locked in the Anti-crease phase. The display will change to show: Anti-crease/Finish and

■ Press the Start button.

■ Unlock the door either by touching the *Start/Add laundry* sensor or by turning the programme selector to the \square position. The door will be unlocked.

■ Pull the door open and unload the drum.

Items left in the drum could shrink or discolour other items in the next wash. Remove all items from the drum.



■ Check the folds in the door seal for any small articles, e.g. buttons, which might be lodged there.

Note: For safety reasons close the door.

■ Remove any used capsules from the detergent dispenser drawer.

Tip: Leave the detergent dispenser drawer slightly open to allow it to dry.

Extras

Extras

You can use the Extras sensor to augment the wash programmes.

SingleWash

For efficiently washing a very small load (< 1 kg) in a normal wash programme. The wash duration is reduced.

Please note the following advice:

- Use liquid detergent
- Reduce the dosage to a maximum of 50% of the amount quoted for a 1/2 load

Pre-ironing

In order to reduce creasing, the laundry undergoes a smoothing process at the end of the programme. Reducing the maximum load by 50% will give a better result. Follow the instructions in the display. Small loads give a better result. The garments must be suitable for drying in a tumble dryer \square and suitable for ironing \square .

Water +

The water level in the wash and rinse stages is increased and a second rinse is carried out in the "Separate rinse/ Starch" programme. You can select other functions for the *Water +* sensor control. These are described in "Settings".

Pre-wash

For laundry with large amounts of dirt, e.g. dust and sand.

Soak

For heavily soiled and stained items with protein stains. A duration of between 30 minutes and 6 hours can be chosen for the soak process. See "Settings" for more information.

The factory default setting is 30 minutes.

Intensive

For hard-wearing laundry that is very heavily soiled. Cleaning efficiency is increased through more intense mechanical action and the application of more heat energy.

Extra quiet

This option reduces noise levels during the wash programme. Use this if you want to wash during quiet periods (for instance, when children are sleeping). The final spin is automatically reduced to \square (Rinse hold). The programme duration is increased.

Extra gentle

Drum rotation and wash duration are reduced. Lightly soiled fabrics are washed more gently.

AllergoWash

This option should be used where high standards of hygiene are required. More energy is used to lengthen temperature holding times and more water is used to increase rinsing efficiency. The items must be suitable for drying in a tumble dryer \square and suitable for ironing \square .

Programme chart

Programme	Load (in kg)	Temperature	Items	Extras
Cottons	9.0	40°C	Normally soiled cotton garments. These settings are the most efficient in terms of energy and water consumption for washing cottons.	(A, B), (C), (D), (E), (F), (G), (H), (I)
Cottons	9.0	Cold to 90°C	Cottons, linens or cotton mix fabrics, e.g. table linen, towelling, underwear, T-shirts etc.	(A, B), (C), (D), (E), (F), (G), (H), (I)
Minimum iron	4.0	Cold to 60°C	Synthetic, mixed fibre and easy care cotton.	(A, B), (C), (D), (E), (F), (G), (H), (I)
Delicates	3.0	Cold to 60°C	Delicate garments made from synthetic fibre, mixed fibre, rayon and viscose.	(A, B), (C), (D), (E), (F), (G), (H), (I)
Woolens	2.0	Cold to 40°C	Machine-washable or hand-washable wool or wool blend fabric. If the care label does not specify a temperature, wash using the cold setting.	(A), (B)
Silks	1.0	Cold to 30°C	Silks and other handwashable fabrics with no wool content, e.g. satin, lace and silk.	(A), (B), (C), (D), (E), (F), (G), (H), (I)
Shirts	1.02.0	Cold to 60°C	Shirts and blouses made of cotton and mixed fibre. If the preset Pre-ironing Extra is switched off, the maximum load capacity is increased to 2.0 kg.	(A), (B), (C), (D), (E), (F), (G), (H), (I)
MobileStart	-	-	The Miele@mobile App is used for selecting programmes and operating the machine.	-
QuickPowerWash	4.0	40°C – 60°C	Moderately soiled garments which are also suitable for washing in the Cottons programme.	(A), (B)
Dark garments/ Denim	3.0	Cold to 60°C	Black and dark garments made from cotton, mixed fibres and denim.	(A), (B), (C), (D), (E), (F), (G), (H), (I)
ECO 40-60	9.0	-	For moderately soiled cotton garments. A laundry load consisting of mixed cottons that are intended for washing at 40°C or 60°C can be washed in the same wash cycle.	(A), (B), (C), (D), (E), (F), (G), (H), (I)
Proofing	2.5	40°C	For treating microfibre fabric, skiwear and table linen made from mainly synthetic fibres to provide a water and dirt resistant finish.	(A), (B), (C), (D), (E), (F), (G), (H), (I)
Outerwear	2.5	Cold to 40°C	Performance outerwear (e.g. jackets and trousers) made from membrane fabric such as Gore-tex®, STIMPATEX®, WINDSTOPPER® etc.	(A), (B), (C), (D), (E), (F), (G), (H), (I)
Express 20	3.5	Cold to 40°C	Cotton garments that have hardly been worn or are only very lightly soiled.	(A), (B), (C), (D), (E), (F), (G), (H), (I)
Sportswear	3.0	Cold to 60°C	Sportswear such as jersey shirts and leggings, and microfibre and fleece garments.	(A), (B), (C), (D), (E), (F), (G), (H), (I)
Automatic plus	6.0	Cold to 40°C	Mixed loads of garments sorted according to colour which are suitable for the Cottons and Minimum iron programmes.	(A), (B), (C), (D), (E), (F), (G), (H), (I)
Separate rinse/ Starch	8.0	-	For rinsing items washed by hand. For starching table cloths, serviettes and workwear.	(C), (D)
Drain/Spin	-	-	Drain only: Select 0 rpm for the spin speed.	(C), (D)
Clean machine	No load	85°C	With frequent washing at low temperatures there is a danger of a build-up of bacteria in the washing machine. Cleaning the washing machine will significantly reduce bacteria, mould, and biofilm, and prevent the build-up of unpleasant odours.	(C), (D)

(A) = SingleWash; (B) = Pre-ironing; (C) = Water +; (D) = Pre-wash; (E) = Intensive; (F) = Soak; (G) = Extra quiet; (H) = Extra gentle; (I) = AllergoWash

PROGRAMME CHART

Detergent

Miele recommended detergents

Programmes	Miele detergents		Miele capsules		
	UltraWhite	UltraColor			
Cottons	✓	✓	-	✓	✓
Minimum iron	-	✓	-	✓	✓
Delicates	-	✓	✓	✓	-
Woolens	-	-	✓	-	-
Silks	-	-	✓	-	-
Shirts	✓	✓	-	✓	✓
QuickPowerWash	✓	✓	-	-	-
Dark garments/ Denim	-	✓	✓	✓	-
ECO 40-60	✓	✓	-	✓	✓
Express 20	-	✓	-	✓	-
Sportswear	-	-	✓	-	-
Automatic plus	-	✓	-	✓	✓
Separate rinse/ Starch	-/-	-/-	-/-	✓/-	-/-

- ✓ Recommended
- Not recommended

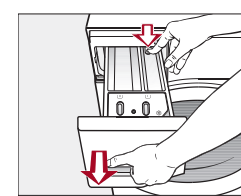
- Specialist detergents (e.g. WoolCare)
- Fabric care (e.g. fabric softener)
- Additive (e.g. booster)

Cleaning and care

Cleaning the detergent dispenser drawer

Washing at low temperatures and the use of liquid detergent can lead to a build-up of mould and bacteria in the detergent dispenser drawer.

- For hygiene reasons, clean the entire drawer at regular intervals.

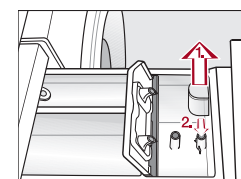


- Pull out the detergent dispenser drawer until a resistance is felt.

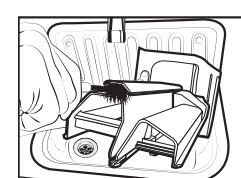
- Press down the release button and, at the same time, pull the drawer right out of the machine.

- Clean the detergent drawer with warm water.

Cleaning the siphon tube and the fabric softener channel



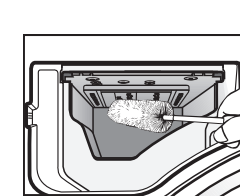
- Clean the siphon tube in the same way.
- Refit the siphon.



- Clean the fabric softener channel using a brush and warm water.

⚠ Liquid starch can cause the siphon to become clogged. Make sure that you clean the siphon and siphon tube particularly thoroughly after using liquid starch a few times.

Cleaning the detergent dispenser drawer housing



- Use a bottle brush to remove detergent residues and limescale from the jets inside the detergent dispenser drawer housing.

Cleaning the drum (Hygiene info)

Washing at low temperatures and/or using liquid detergents can cause bacteria and odours to build up in the washing machine. Use the Clean machine programme to clean the machine. Note the message in the display:

- Hygiene info: Run a programme at min. 75°C or "Clean machine" programme

Problem solving guide

Some of the messages in the display are more than one line long. Touch the V or ^ sensor to read them in full.

Message	Possible cause and remedy
The control panel remains dark.	<ul style="list-style-type: none"> There is no power to the machine. Check whether the mains plug is plugged in and switched on. Check whether the circuit breaker has tripped. <p>The washing machine has switched off automatically to save energy.</p> <ul style="list-style-type: none"> Switch the washing machine on again by turning the programme selector.
Door lock. Service	<p>The door is not closed properly. The door lock could not engage.</p> <ul style="list-style-type: none"> Close the door again. Start the programme again. If the fault message appears again, contact Miele.
Check drainage. See	<p>The water outlet is blocked or restricted. The drain hose has been fixed too high.</p> <ul style="list-style-type: none"> Clean the drain filter and the pump. Check whether the maximum delivery head of 1 m has been exceeded.
Water intake. See	<p>The water inlet is blocked or restricted.</p> <ul style="list-style-type: none"> Check whether the tap is turned on properly. Check whether the inlet hose is kinked. Check whether there is sufficient water pressure.
Service. Waterproof syst. Turn off	<p>The filter in the water inlet is blocked.</p> <ul style="list-style-type: none"> Clean the filter (see the operating instructions). <p>The water protection system has reacted.</p> <ul style="list-style-type: none"> Turn off the tap. Call Miele.
Service. Fault F	<p>There is a fault.</p> <ul style="list-style-type: none"> Disconnect the washing machine from the mains electricity supply, either by switching it off at the wall socket and withdrawing the plug, or by disconnecting it at the circuit breaker. Wait at least 2 minutes before reconnecting the washing machine to the mains electricity supply. Then switch the washing machine on again. Restart the programme. <p>If the fault message appears again, contact Miele.</p>
Door jammed. Service.	<p>The door lock has jammed.</p> <ul style="list-style-type: none"> Call Miele.

Message	Possible cause and remedy
Check detergent	<p>Excessive foam has built up during washing.</p> <ul style="list-style-type: none"> Check the amount of detergent dispensed. Observe the instructions on the detergent packaging and the degree of soiling of the laundry. If necessary, reduce the dosage amount by increments of 10%. <p>A programme using a temperature above 60°C has not been run for a long time.</p> <ul style="list-style-type: none"> Turn the programme selector to <i>Further programmes</i> and select the Clean machine programme in the Maintenance submenu. Run the Clean Machine programme using the Miele IntenseClean machine cleaner or a universal powder detergent. This will clean the washing machine and prevent a build-up of bacteria and odours.
Hygiene info: Run a programme at min. 75°C or "Clean machine" programme	<p>The <i>Pre-ironing Extra</i> which runs at the end of the programme could not be carried out properly.</p> <ul style="list-style-type: none"> Check whether the washing machine is aligned correctly as described in "Installation and connection – Levelling the machine". Check whether the maximum delivery head of 1 m has been exceeded. <p>If the fault message appears again, contact Miele. The washing machine can still be used, however without the <i>Pre-ironing Extra</i>.</p>
Align the washing machine	<p>The pumps are dirty.</p> <ul style="list-style-type: none"> Clean the pumps as described in "Problem solving guide - Opening the door in the event of a blocked drain outlet and/or power cut". Start the programme again after cleaning. <p>The jet in the top of the door ring is blocked with fluff.</p> <ul style="list-style-type: none"> Remove the fluff with your finger. Do not use any sharp or pointed tools to do this. Start the programme again after cleaning. <p>If the fault message appears again, contact Miele. The washing machine can still be used but with reduced functionality.</p>
Check filter + jet	<p>The messages will appear at the end of the programme and when the washing machine is switched on and need to be confirmed with the OK sensor.</p>

Miele

Quick Start Guide Washing machine



These short instructions are not a substitute for the operating instructions supplied with the appliance. Please read the operating instructions supplied with your washing machine before using it for the first time and take note of the Warning and Safety instructions, as well as the full descriptions on how to use your appliance.