

## THE BENCHMARK MACHINES



### PWM 916 | 35 lbs. PERFORMANCE PLUS

#### FEATURES

- M Touch Pro Plus freely programmable color display
- Short program cycles
- Patented Honeycomb Drum 2.0
- 3D imbalance monitoring
- G-force of 462
- High durability: tested for 30,000 operating hours
- Safe disinfection
- Low consumption values

**OPL** | ON-PREMISE LAUNDRY



No Heater



Steam Indirect



Electric Heating

#### Exclusive to Miele



#### Patented Honeycomb Drum 2.0

The scoop rib perforations in the Honeycomb Drum 2.0 cause water to shower down on the load, guaranteeing thorough soaking.



#### Short Program Cycles

Premium commercial technology allows you to benefit from quick and efficient program cycles.



#### EcoSpeed Patented Wash Process

The EcoSpeed washing process features an optimized drum rhythm and enhanced washing action, allowing intensive cleaning performance with reduced water usage.



#### Proven Hygiene

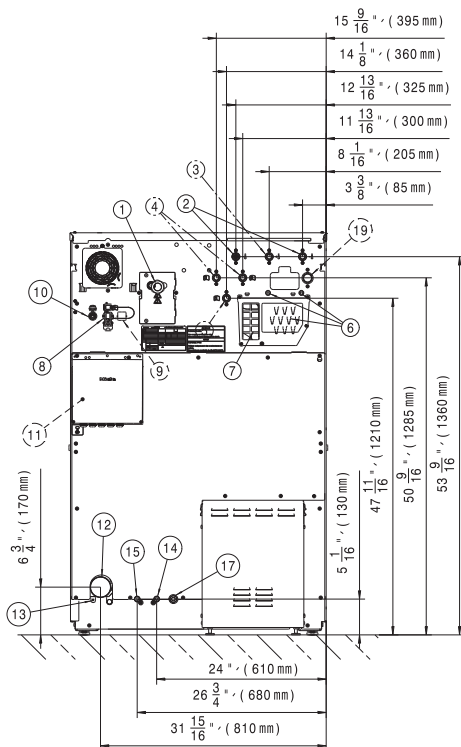
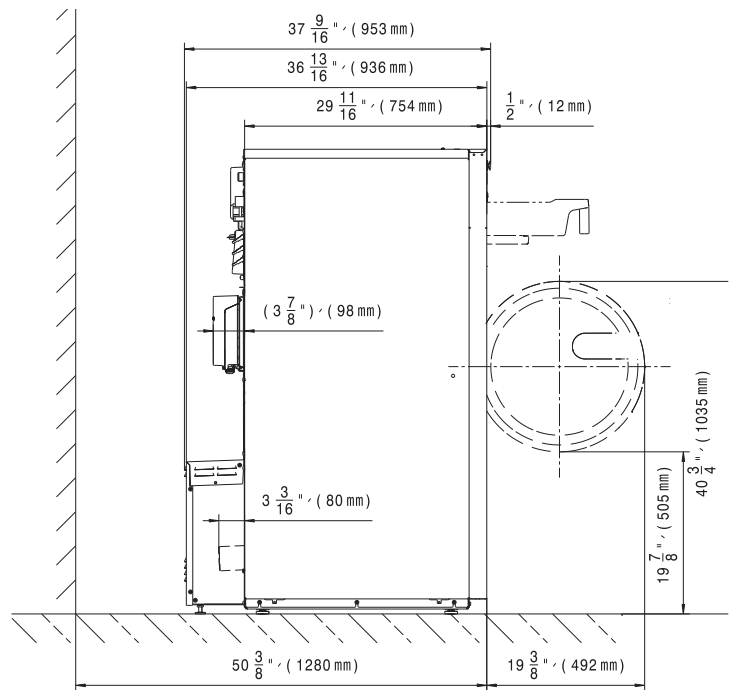
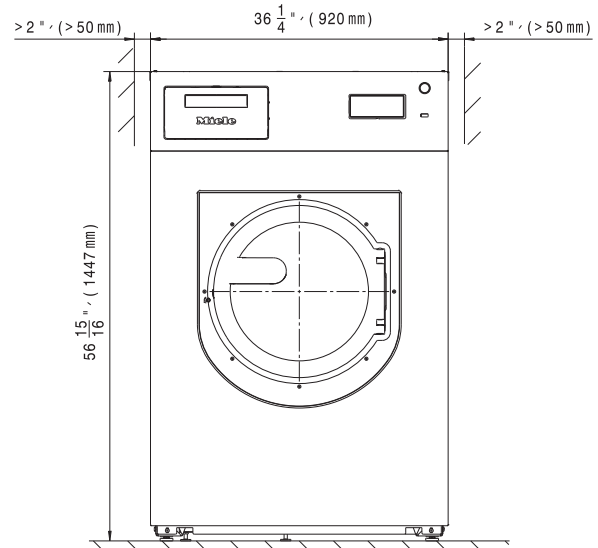
Our washing machines in the Benchmark series remove more than 99.9% of all viruses (including coronaviruses).\*

\*May not apply for No Heater version.

Model	Heat Type	Electrical Specification Voltage/Hz/Phase (Amp)	Color	Material No.	Article No.
PWM 916	No Heater	240/60/1 (2 x 20 A)	Iron Grey	11803210	51916026NAM
PWM 916	No Heater	240/60/1 (2 x 20 A)	Stainless Steel	11803130	51916059NAM
PWM 916	Steam	240/60/1 (2 x 20 A)	Iron Grey	11803280	51916027NAM
PWM 916	Steam	240/60/1 (2 x 20 A)	Stainless Steel	11803260	51916049NAM
PWM 916	Steam	208, 240/60/3 (3 x 15 A)	Stainless Steel	12084550	51916032NAM
PWM 916	Electric	208, 240/60/3 (3 x 40 A)	Stainless Steel	11803110	51916017NAM

## Specifications

Capacity	35 lbs. (15.5 kg)
Cylinder Diameter	16 <sup>5</sup> / <sub>16</sub> in. (415 mm)
Cylinder Depth	14 <sup>3</sup> / <sub>16</sub> in. (361 mm)
Cylinder Volume	4.9 cu.ft. (140 l)
Machine Dimensions (WxDxH)	36 <sup>3</sup> / <sub>8</sub> x 37 <sup>1</sup> / <sub>2</sub> x 57 <sup>1</sup> / <sub>16</sub> in. (924 x 953 x 1,450 mm)
Door Opening	16 <sup>5</sup> / <sub>16</sub> in. (415 mm)
Floor to Door	19 <sup>7</sup> / <sub>8</sub> in. (505 mm)
Reversible Door	No
Shipping Dimensions (WxDxH)	43 x 44 <sup>1</sup> / <sub>2</sub> x 62 <sup>3</sup> / <sub>8</sub> in. (1,090 x 1,130 x 1,585 mm)
Net Weight	771-845 lbs. (350 - 383 kg)
Crated Weight	822-895 lbs. (373 - 406 kg)
Wash Speed	38 rpm
Extract Speed	1,075 rpm
G-force	462
Water Inlets	6 x <sup>3</sup> / <sub>4</sub> in. (153 x 19 mm)
Hot Water (No Heater version)	1 x 1 in. (26 x 26 mm)
Steam Inlets (Steam version)	2 x <sup>1</sup> / <sub>2</sub> in. (51 x 13 mm)
Drain Diameter	2 <sup>3</sup> / <sub>4</sub> in. (70 mm)
Recommended Water Pressure	14.5 - 145 psi
Water Flow	52.8 gal/min. (200 l /min.)
Min. Recommended Distance Between Machines	2 in. (50 mm)
Agency Approvals	Intertek



Heating	Voltage (Voltage/Hz/Phase)	Wire	Circuit Breaker Amps	Running Amps	Total Power (kW)
No Heater	240/60/1	2 Wire + Ground	20	16	2.3
Steam	240/60/1	2 Wire + Ground	20	16	2.3
Steam	208, 240/60/3	3 Wire + Ground	15	8.2	2.3
Electric	208, 240/60/3	3 Wire + Ground	40	38.4	15.7

Specifications subject to change without notice or obligation.  
Contact Miele USA at (800) 991-9380 or Miele Canada at  
(888) 325-3957 for dimensions not shown or for clarification.