

Commissioning

⚠ Damage resulting from incorrect installation and connection. Installing and connecting the tumble dryer incorrectly will cause serious property damage. Please follow the instructions in “Installation”.



⚠ This tumble dryer contains a refrigerant that is flammable and explosive. Please follow the instructions in “Installation”.

Carrying out commissioning

- Approach the tumble dryer or touch **On/Off**. The display shows the first step for commissioning.

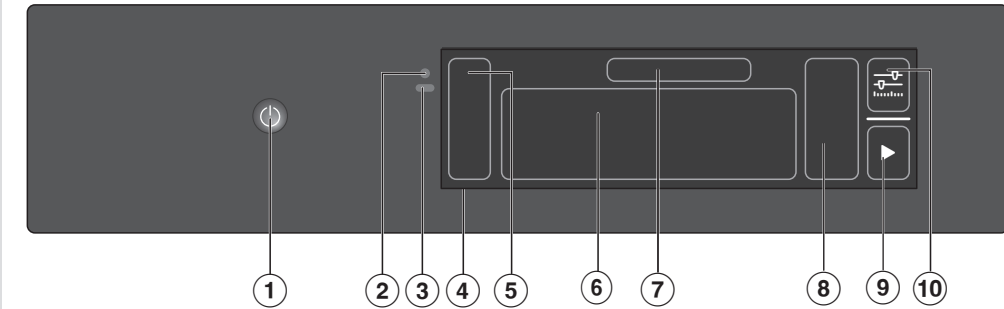
- Follow the steps in the display.

Requirements for networking

Note the following requirements for networking:

1. A home network is available at the installation site. Have the Wi-Fi password ready.
2. The Miele App is available on a mobile device.
3. You have a user account in the Miele App. You can also carry out the networking at a later time. Skip the “Networking” menu option during commissioning.

Familiarising yourself with the appliance



- 1 **On/Off** sensor
- 2 **Optical interface** (for Customer Service)
- 3 **Proximity sensor (MotionReact)**
- 4 **Display**

Operating principles

Switching the tumble dryer on or off
Press **On/Off** until the tumble dryer switches on or off.

Useful tip: With MotionReact, the tumble dryer is automatically switched on when you approach it.

Operating the display

Swipe your finger in the required direction on the display. To select a menu option, press the required menu option or symbol. The menu option is highlighted.

Exiting a menu level

Depending on the menu, select **X Close window** or **↩**. The higher-level menu is displayed.

Selecting a programme

Swipe your finger on the display until the required programme is highlighted. If you want to start the programme with the parameters displayed, select **▶ Start**.

Useful tip: If you want to change the parameters, select the programme symbol or **⌂ Further parameters**.

- 5 **Sidebar**
- 6 **Programmes** (for Customer Service)
- 7 **Name of the highlighted programme**

Adjusting parameters

Switching parameters on or off

Select the parameter you want to switch on or off. Confirm with **✓ OK**. The parameter is saved.

Changing parameters on a scale

Select the parameter you want to change. Move the scale to the left or right until the required value is highlighted. Confirm with **✓ OK** or wait for the change to be applied automatically. The value is saved.

Displaying the context menu

To open the context menu, press and hold a Favourite or select **⊕ Context menu**. Make the required change. To close the context menu, select **X Close window**.

Sharp objects such as pens can scratch the display. Only touch the display with your fingertips.

- 8 **Parameters for the programme**
- 9 **Start**
- 10 **Further parameters**

Proximity sensor/MotionReact

The tumble dryer has a proximity sensor. The proximity sensor reacts to movement and detects when you approach the tumble dryer. Depending on the operating status of the tumble dryer, you can trigger various actions using the proximity sensor, including switching on the tumble dryer.

ComfortOpen

A motorised door opener opens the door when a hand approaches the door handle sensor. The door opens a little automatically at the end of the programme.

PerfectDry

PerfectDry dries the laundry precisely, although the result is also influenced by the calcium content of the water used to wash the laundry. The active PerfectDry adjusts the drying process to the residual moisture of the laundry and water quality, making the programme running time more accurate. PerfectDry is not active in programmes with a selectable duration.

Operating sequence

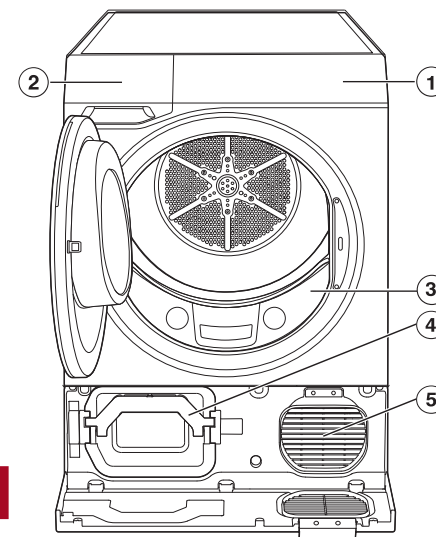
On the tumble dryer

Standard:

1. Prepare the laundry
2. Switch on the tumble dryer
3. Load the laundry
4. Close the door
5. Select a programme
6. Set programme parameters
7. Start with **▶ Start**
8. End of the programme

Wash2Dry:

1. Prepare the laundry
2. Switch on the tumble dryer
3. Load the laundry
4. Close the door
5. Select **Wash2Dry**
6. Start with **▶ Start**
7. End of the programme



- 1 **Control panel**
- 2 **Condensate container**
- 3 **Fluff filter**
- 4 **Holder with plinth filter**
- 5 **Cooling fan**

Via the App

1. Prepare the laundry
2. Switch on the tumble dryer
3. Load the laundry
4. Close the door
5. Select **Remote control** on the tumble dryer
6. Start with **▶ Start**
7. Select a programme via the App
8. Start the programme via the App
9. End of the programme

Tips on operational steps

Preparing the laundry

- Check that the drum is empty.
- Remove foreign objects and all objects such as detergent dispensing aids or loose underwires from bras.

Loading the laundry

- Load the laundry loosely in the drum.

Useful tip: Note the maximum load size of the programmes shown in the display.

What to do after removing laundry

- Clean the fluff filters in the door opening.
- Empty the condensate container.

More operating options

Delay start

You can use Delay start to either delay the start of the drying programme or to set when you want a drying programme to end. The Delay start function is possible within a 24-hour period. Further information can be found in the operating instructions.

Add laundry (AddLoad)

Laundry can be added or removed if the display shows “Add laundry”.

- Touch the display.

- Select **Add laundry**.

The drying programme is interrupted and the door will open a little.

- Open the door fully.

- Close the door.

- Select **▶ Start**.

The programme will continue.

Programme modifications after starting the programme

Once the programme has started, neither the programme nor the parameters can be changed. To make a change, you must cancel the programme.

Cancelling a programme

- Select **■ Stop**.

The display will ask whether you want to cancel the programme.

- Select .

The programme is cancelled and the door is opened.

Interrupting a programme

- Switch the tumble dryer off.
- Switch the tumble dryer on again to continue the programme.

♥ Favourites

You can save up to 12 programmes as Favourites. You can change the programme name and certain parameters for your Favourite programmes. Further information can be found in the operating instructions.

OPERATION

Drying levels

You can choose from various drying levels to dry your laundry to meet your specific needs.

HygieneDry

- For fabrics with special hygiene requirements.

- The programme must not be interrupted, as the dried laundry would not meet hygiene requirements in this case.

- Maximum load in the *Cottons* programme: 4.5 kg.

- In other programmes, do not exceed the maximum load specified for each programme.

Extra dry

For multi-layered or very thick fabrics and for fabrics that do not dry evenly using *Normal plus*.

Normal plus

For fabrics that are to be put away immediately.

Normal

For fabrics that may shrink such as light cotton or jersey fabrics.

Hand iron plus, Hand iron

For items that are to be ironed after drying.

Adjustable programme running time

For some programmes, such as the *Warm air* programme, you can select a *Duration*.

Useful tip: Do not select the longest *Duration* to start with. Check the items as you are drying them to find the optimal *Duration*.

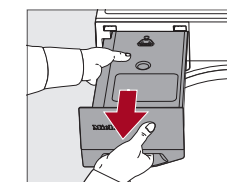
COMMISSIONING

Condensate container

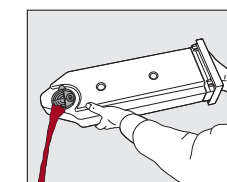
Emptying the condensate container

Empty the condensate container after drying and when prompted to do so by the display.

Damage to the dryer door and the condensate container. Damage and scratches may occur. First close the dryer door and then pull out the condensate container.



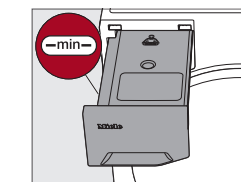
- To pull out the condensate container, keep a firm hold on the fascia panel and in the middle of the container.



Useful tip: You can collect the condensed water to use later for the SteamCare function if the condensate container is empty when preparing the next drying programme.

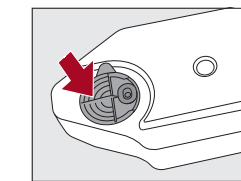
Checking the condensate container fill level

If you are using SteamCare, the condensate container must be filled to at least the —min— mark.



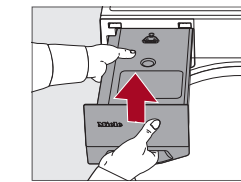
- Check the fill level.

⚠ Only fill with mains water in exceptional cases. Otherwise, use condensate water (from tumble drying, for example).



- Pour the condensed water through the rings on the spout.

Inserting the condensate container



- Insert the condensate container.

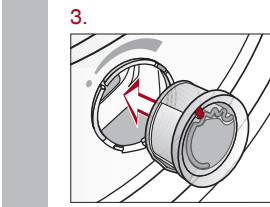
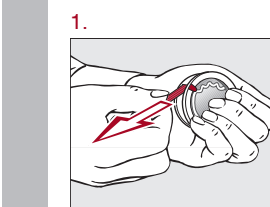
FragranceDos

Useful tip: You can use a fragrance flacon to give your laundry a pleasant fragrance. There are 2 sockets in the fluff filter.

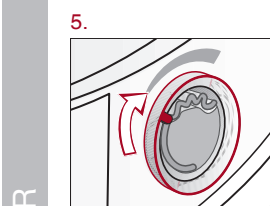
Close the unused socket.

Please read the “Warning and safety instructions” and “Operation” sections of the operating instructions carefully.

Inserting a fragrance flacon

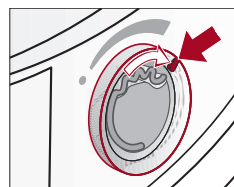


The marker ② must be pointing to the ① position.



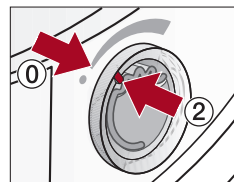
Turn the outer ring clockwise a little. The marker ② must be pointing to the ① position.

Setting the fragrance intensity



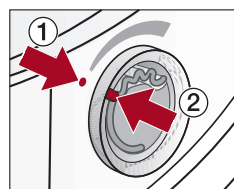
- The further you turn the outer ring of the fragrance flacon clockwise, the more intense the fragrance.

Closing the fragrance flacon



- Turn the outer ring anti-clockwise until the marker ② is pointing to the ① position.

Removing the fragrance flacon



- Turn the outer ring until the marker ② is pointing to the ① position.
- Remove the fragrance flacon.



To prevent any fragrance running out of the flacon, do not lay it down on any surface.





- Only store the fragrance flacon in its original packaging.

CONDENSATE CONTAINER

Programme overview

Programme	Load	Items	Tips
Wash2Dry	–	The programme is selected automatically in conjunction with the programme selection on the connected washing machine.	To use the function, you must own a Miele W2 washing machine and network your washing machine and tumble dryer with the Miele App.
ECO	9 kg	Cotton items with normal residual moisture, as for <i>Cottons Normal</i>	Reduce to 4.5 kg for <i>HygieneDry</i> .
Cottons	9 kg	Towelling, jersey wear, T-shirts, underwear, baby clothes, workwear, covers, jackets, bathrobes, and flannelette bed linen	Fasten zips and buttons.
Minimum iron	4 kg	Synthetic and mixed fibre textiles as well as easy care cotton e.g. jumpers, dresses, trousers and socks/tights	Shortening of the programme running time
QuickPowerDry	4 kg	Garments made of cotton, synthetic fibres or mixed fibres	Dry jumpers separately. Select a shorter drying time for delicate woollens.
Woollens	1 kg	Woollen garments and fabric containing wool blends with a care label stating that they are suitable for washing, e.g. jumpers, cardigans, socks/tights	For freshening up and smoothing with steam
Shirts/Blouses	2 kg	Shirts and blouses made of cotton and mixed fibre	For freshening up without additional steam
PowerFresh	1 kg	Washed, damp textiles	
Delicates	2.5 kg	Delicate garments made from synthetic fibre, mixed fibre and viscose with the care symbol  , e.g. lingerie and appliquéd garments	This may cause a fire hazard. Do not dry fabrics which have been treated with proofing agents containing paraffin.
Warm air	9 kg	Dry all garments or dry to end of programme	For freshening up without additional steam
Denim	3 kg	All garments made from denim	
Outerwear	2.5 kg	Functional textiles such as outdoor jackets and trousers made from membrane fabrics like Gore-Tex®, SYMPATEX®, WINDSTOPPER®	Fasten zips and buttons
Proofing	2.5 kg	Items made of microfibre and mainly synthetic fibres, e.g. outerwear, skiwear and rainwear, table linen	This may cause a fire hazard. Do not dry fabrics which have been treated with proofing agents containing paraffin.
DryFresh Sportswear	4 kg	Washed, damp textiles	
Express	3 kg	Sportswear such as singlets and leggings as well as microfibre and fleece garments	For freshening up without additional steam
Down filled items/Duvets	4 kg	Garments suitable for the <i>Cottons</i> programme	
Woollens handcare	–	Pillows and duvets with feather (down) or synthetic filling	1–2 pillows 40 x 80 cm or 1 pillow 80 x 80 cm or 1 duvet
Silks handcare	1 kg	Woollen garments and fabric containing wool blends, e.g. pullovers, cardigans, socks/tights	Wool and wool blend items contain a finish and are only fluffed up; they are not dried completely.
Smoothing	1 kg	Silk garments such as shirts and blouses	This programme reduces creasing. Items are not dried completely.
QuickHygiene	4 kg	Washed, damp textiles	To smooth out creasing caused during the spin cycle in the washing machine without additional steam.
Bed linen	4 kg	Cottons and linen fabric which will be in direct contact with the skin, e.g. underwear, baby clothes, bed linen, towelling	Also suitable for clean, dry laundry.
Automatic	5 kg	Mixed loads of garments suitable for the <i>Cottons</i> and Minimum iron programmes	Fasten zips and buttons.
Basket programme	3.5 kg	Items suitable for tumble drying for which mechanical stress should be avoided.	Always use the drying basket.
Cool air	9 kg	All textiles	

Care symbols

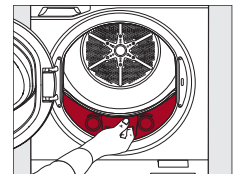
-  Do not tumble dry
-  Suitable for tumble drying
-  Suitable for gentle tumble drying
-  Iron (●●● hot, ●● medium, ● warm)

Cleaning and care

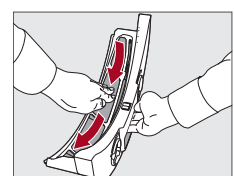
Cleaning the fluff filters

Clean the fluff filters after every drying programme.

- Open the tumble dryer door.



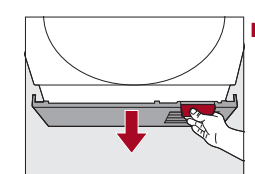
- Pull the fluff filter out.



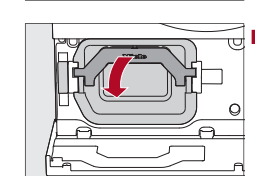
- Remove the fluff.

Cleaning the plinth filter

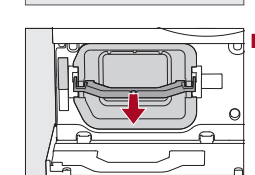
Clean the plinth filter only when prompted to do so by the display or if the programme running time has been extremely long.



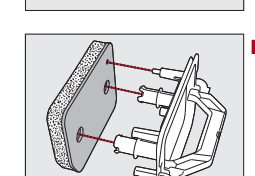
- Open the plinth flap.



- Fold the handle downwards.



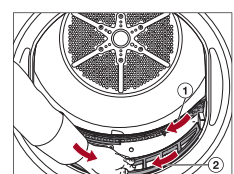
- Grasp the handle and pull the holder forwards to remove it.



- Pull the plinth filter off the holder.

Useful tip: A ball of fluff forms under your fingers when you start wiping. Strip off all remaining fluff using the fluff ball.

Useful tip: Alternatively, use a vacuum cleaner with a dusting brush.

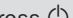


- Use a cleaning cloth to remove fluff ①.
- Remove fluff ②.

- Push the fluff filter all the way in.
- Close the drum door.

Useful tip: To collect the cleaning water, place a bowl or bucket under the tap.

PROBLEM SOLVING GUIDE

Problem	Possible cause and remedy
The tumble dryer does not switch on. The display remains dark.	<p>There is no power to the tumble dryer.</p> <ul style="list-style-type: none">Check whether the mains plug is plugged in and switched on.Check whether the circuit breaker has tripped. <p>The proximity sensor is switched off. The proximity sensor does not respond.</p> <ul style="list-style-type: none">Press  <i>On/Off</i> and switch the tumble dryer on.Check the <i>Proximity sensor</i> setting in Settings.Check the proximity sensor by approaching the tumble dryer from the front. <p>With stacked installation, the proximity sensor in the tumble dryer may not work or its response will be limited. This is not a fault.</p>
Empty the container or check the drain outlet.	<p>The condensate container is full or there is a kink in the drain hose.</p> <ul style="list-style-type: none">To switch off the message, you must switch off the tumble dryer and wait a short while before switching it on again.Empty the condensate container.Check the drain hose. The drain hose must not be kinked.
Switch the appliance off and on again. If the fault persists, call Miele.	<p>There is no obvious cause.</p> <ul style="list-style-type: none">To switch off the message, you must switch off the tumble dryer.Switch the tumble dryer back on.Start a programme. <p>If the fault occurs again, contact Miele Customer Service.</p>
Clean the fluff and plinth filters.	<p>The tumble dryer is not working correctly or economically. This may be caused by fluff or detergent residues.</p> <ul style="list-style-type: none">Clean the fluff filters and the plinth filter. <p>You can influence when the indicator lights up.</p> <ul style="list-style-type: none">Follow the instructions in “Adjusting settings – Airways indicator” in the operating instructions.

Problem	Possible cause and remedy
Fault F66 • Airways - Clean the fluff and plinth filters. Check the heat exchanger and airways. Switch the appliance off and on again. If the fault persists, contact Miele.	<p>Fluff or detergent residues have clogged the fluff filters and the plinth filter.</p> <ul style="list-style-type: none">To switch off the message, you must switch off the tumble dryer.Clean the fluff filters and the plinth filter.If the fluff filters and the plinth filter are damaged or out of shape, or if they cannot be cleaned, they must be replaced. <p>If the fault message is displayed again after cleaning, you will find detailed instructions on how to proceed in the operating instructions.</p>
The laundry is not sufficiently dry.	<p>The load consisted of different types of fabric.</p> <ul style="list-style-type: none">Finish drying using the <i>Warm air</i> programme.Select a more suitable programme next time.
Items made of synthetic fibres are charged with static electricity after drying.	<p>Items made of synthetic fibre can become charged with static electricity in the tumble dryer.</p> <ul style="list-style-type: none">Static charge can be reduced by adding fabric softener to the final rinse in the washing programme.
There is a build-up of fluff.	<p>Fluff is principally the result of friction when garments are being worn and to some extent when they are being washed. Tumble drying hardly causes any fluff to form. Fluff is collected by the fluff filters and the plinth filter.</p> <ul style="list-style-type: none">See “Cleaning and care” in the operating instructions.
You can hear buzzing or humming operating noises	<p>Whirring and humming noises during drying are not a fault. This noise is emitted by the compressor (heat pump) or the pump for SteamCare.</p> <ul style="list-style-type: none">No action is required.

Quick Start Guide

Heat pump tumble dryer



These short instructions are not a substitute for the operating instructions supplied with the appliance. Please read the operating instructions supplied with your tumble dryer before using it for the first time and take note of the Warning and Safety instructions, as well as the full descriptions on how to use your appliance.