

Installation Plan
Tumble dryer



PT 8407 D (Steam Heated)

8 6 \$

0 L H O H , Q F

1 D W L R Q D O + H D G T X D U W H U V
, Q G H S H Q G H Q F H : D \
3 U L Q F H W R Q 1 -

3 K: 800-991-9380
609-419-9898

Fax: 609-419-4241

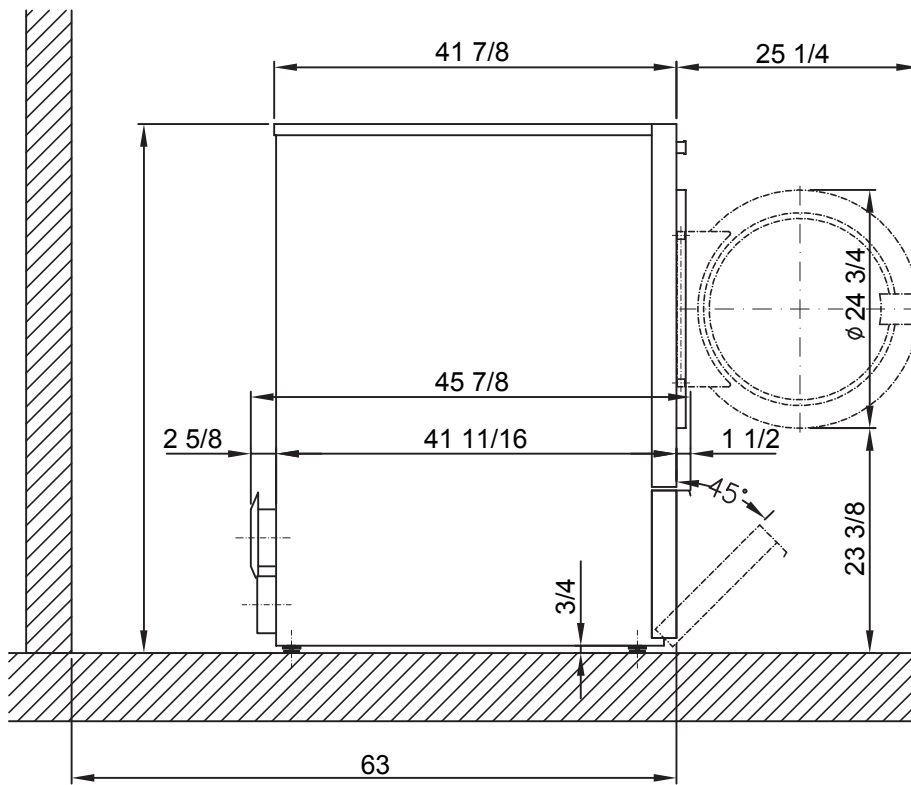
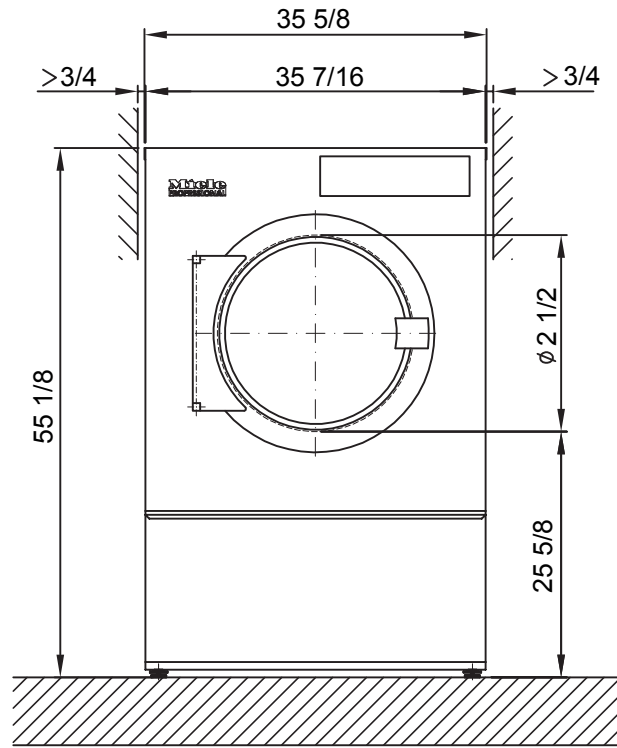
www.mieleusa.com

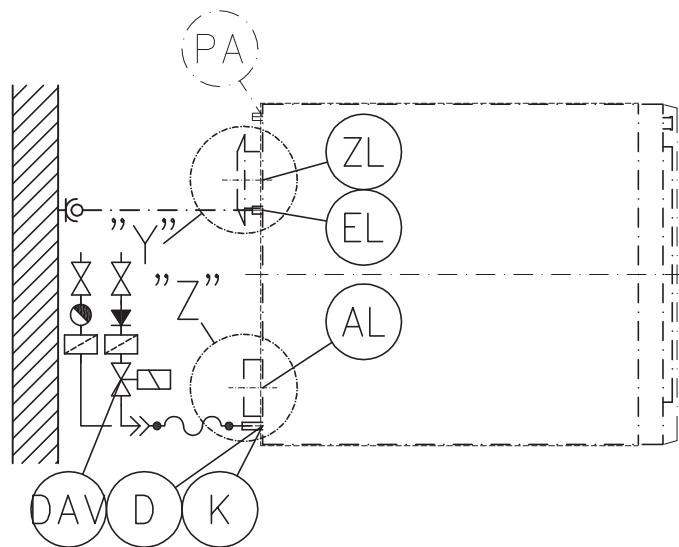
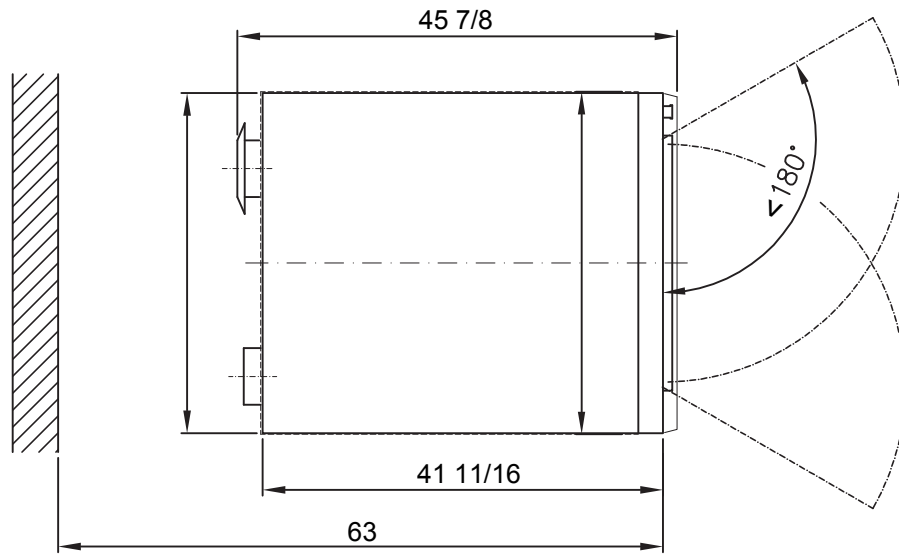
Technical Service & Support
Nationwide
Phone: 800-991-9380
Fax: 800-220-1348

proservice@mieleusa.com

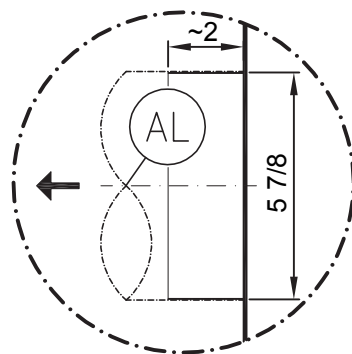
It is essential to read the operating and installation instructions before installing, commissioning or using the machine. This avoids the risk of accidents or damage.

All rights reserved

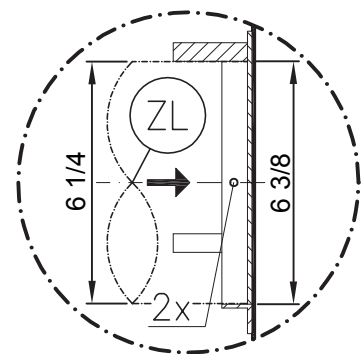


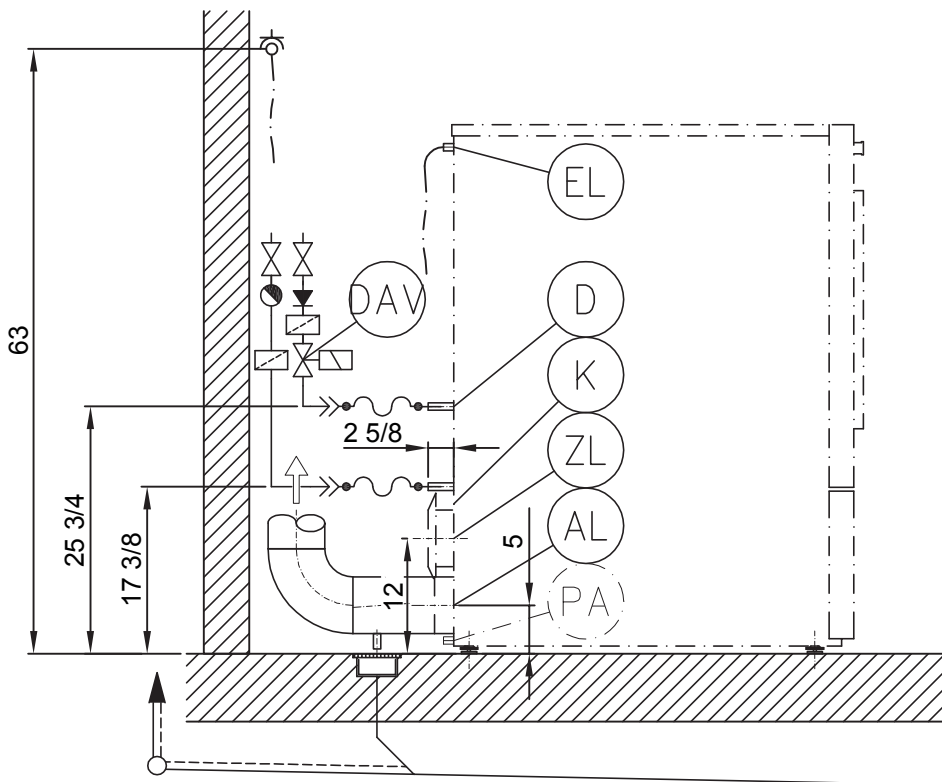
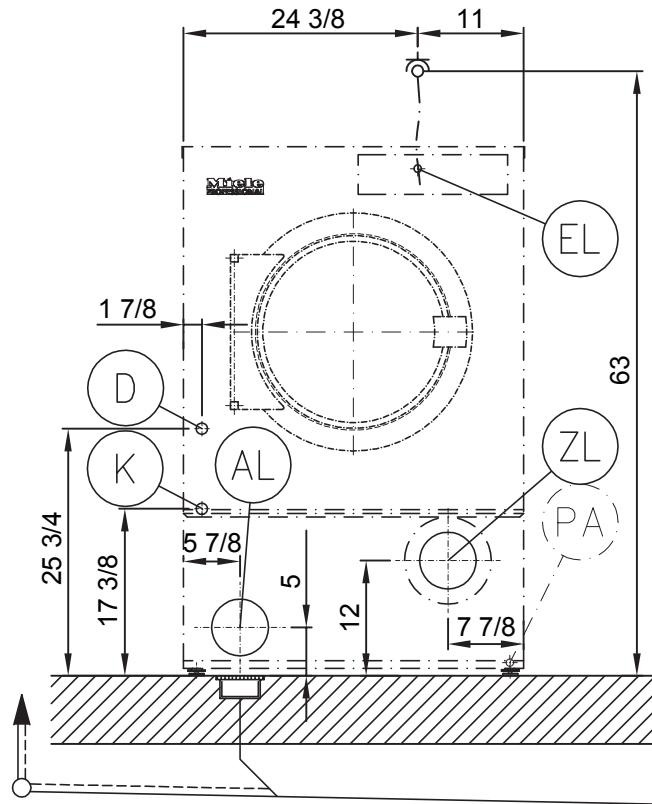


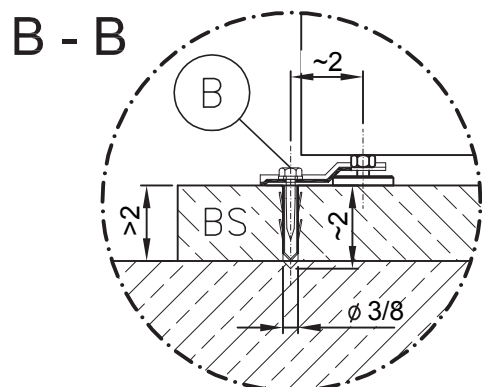
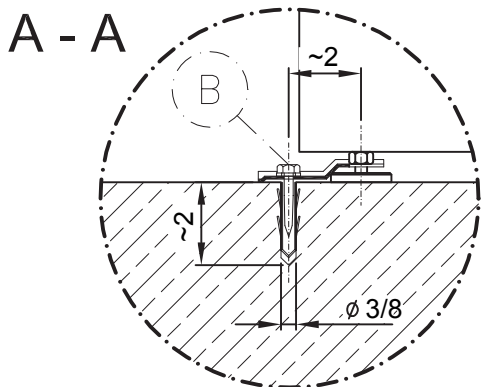
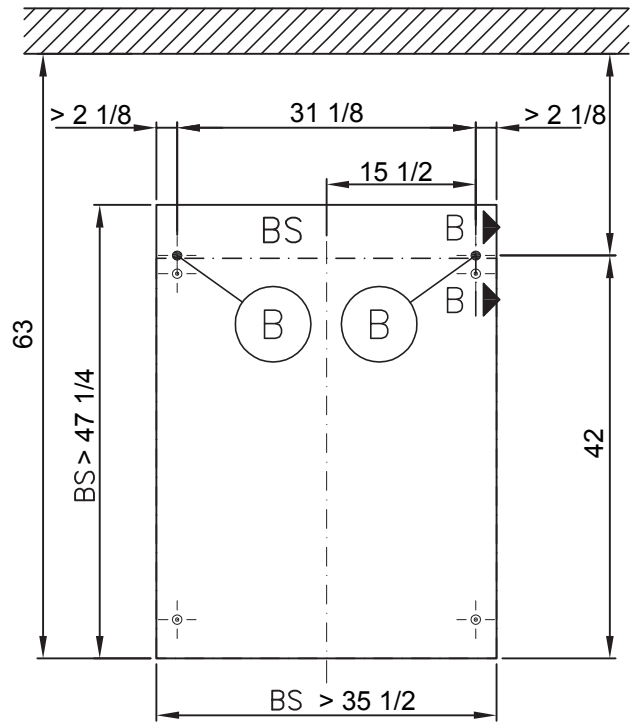
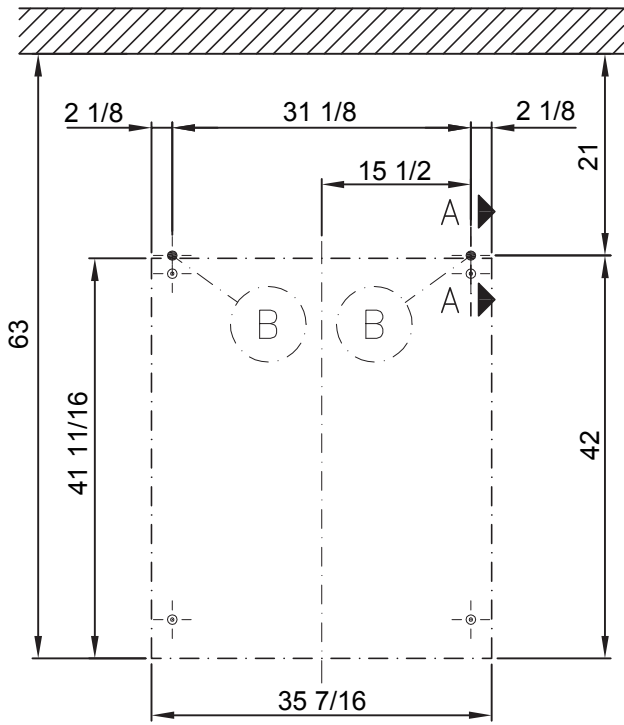
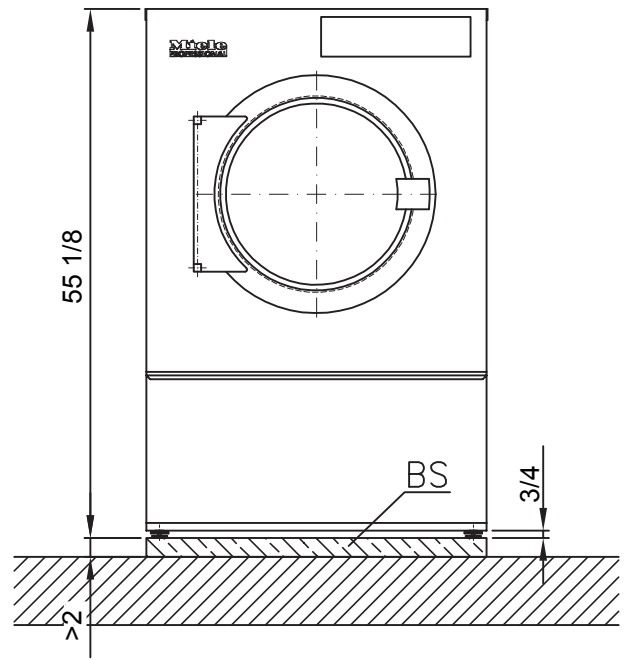
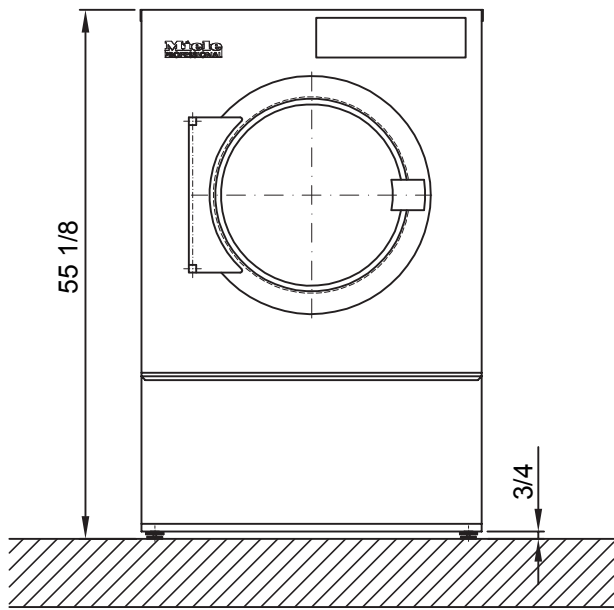
"Z"

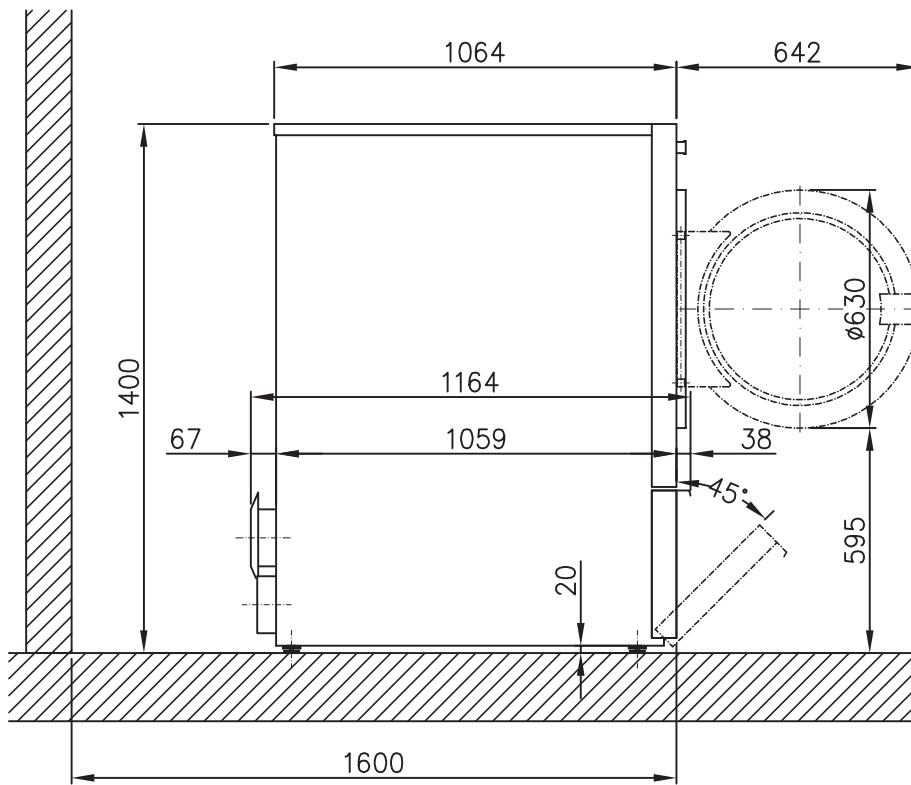
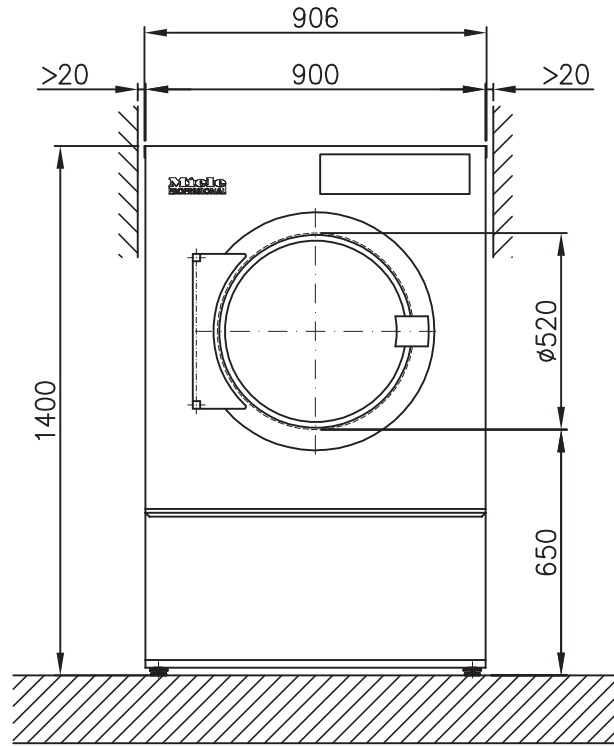


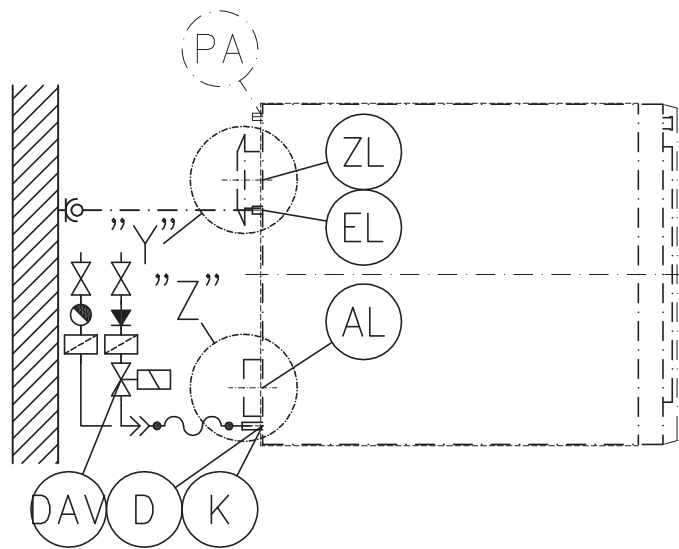
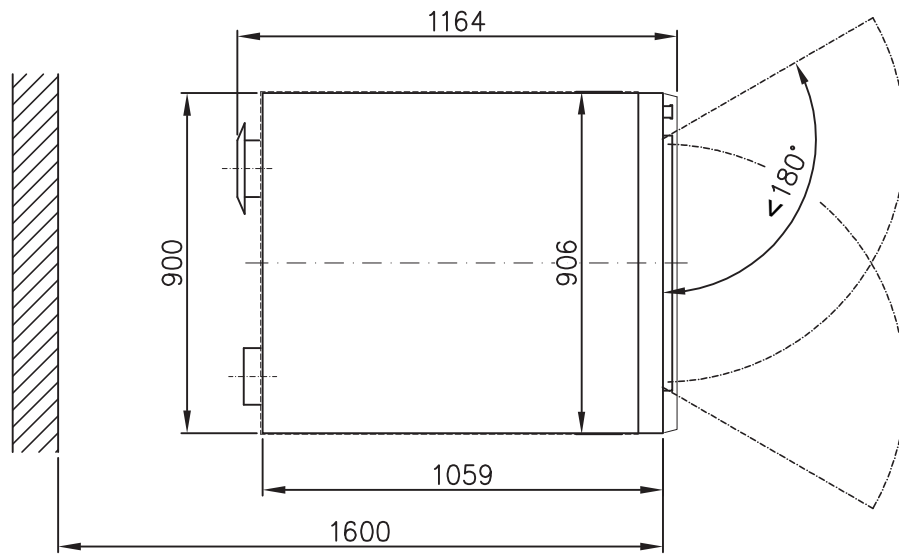
"Y"



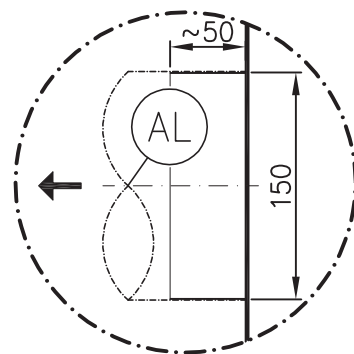




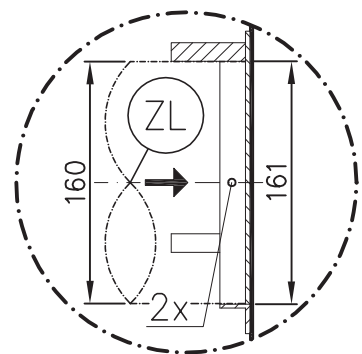


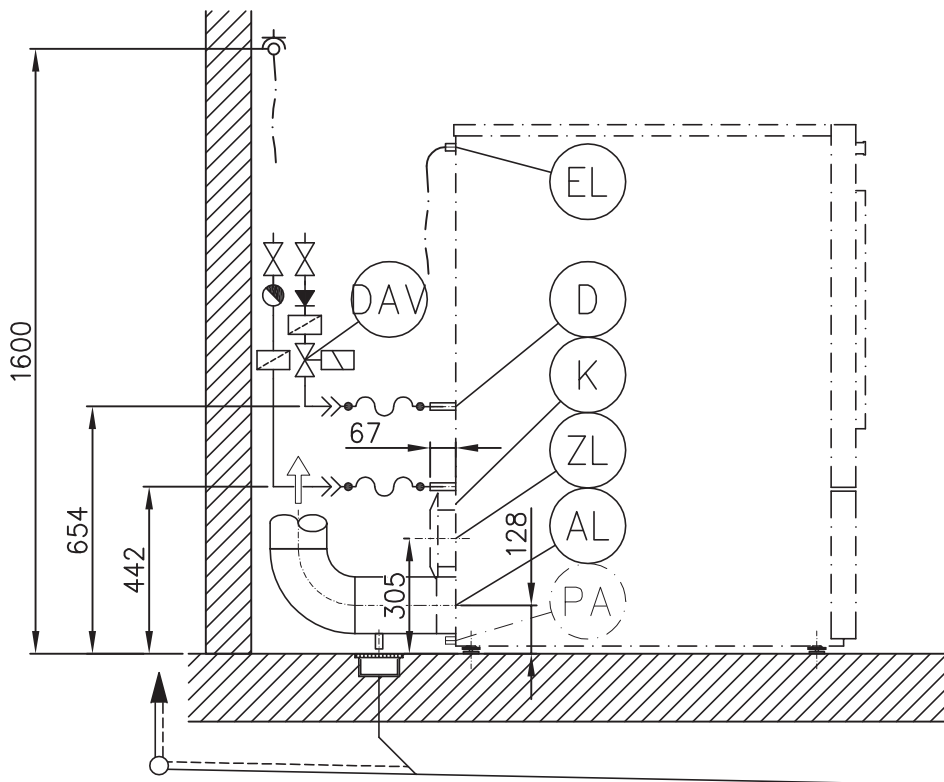
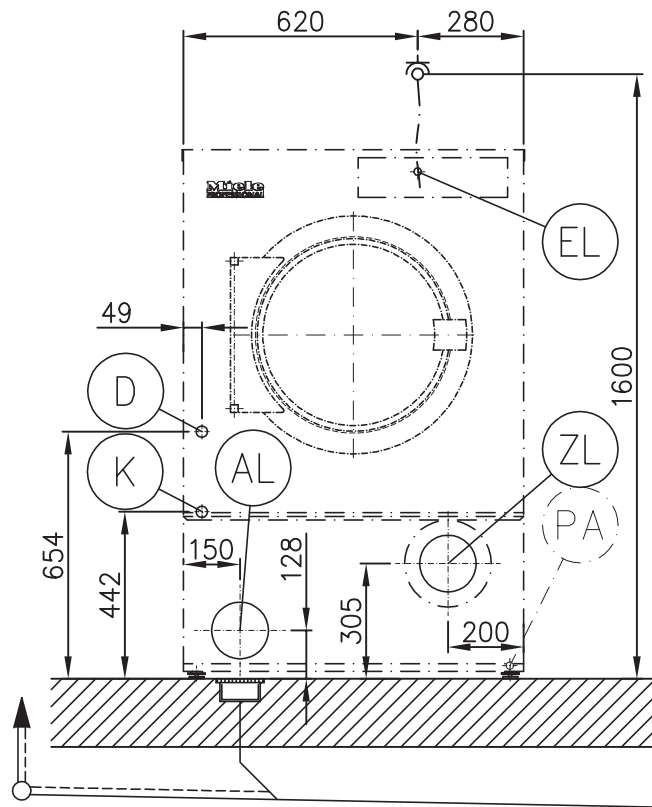


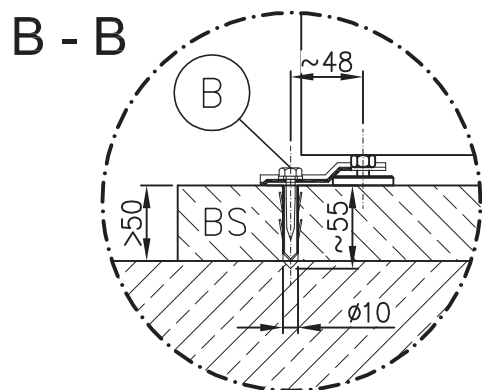
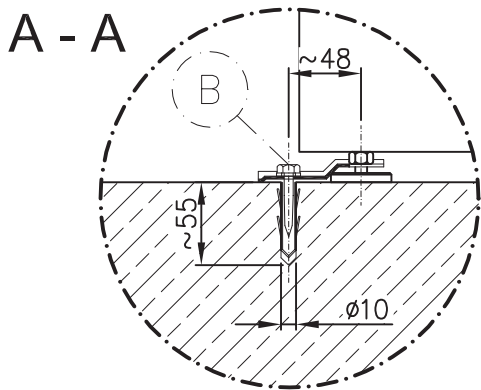
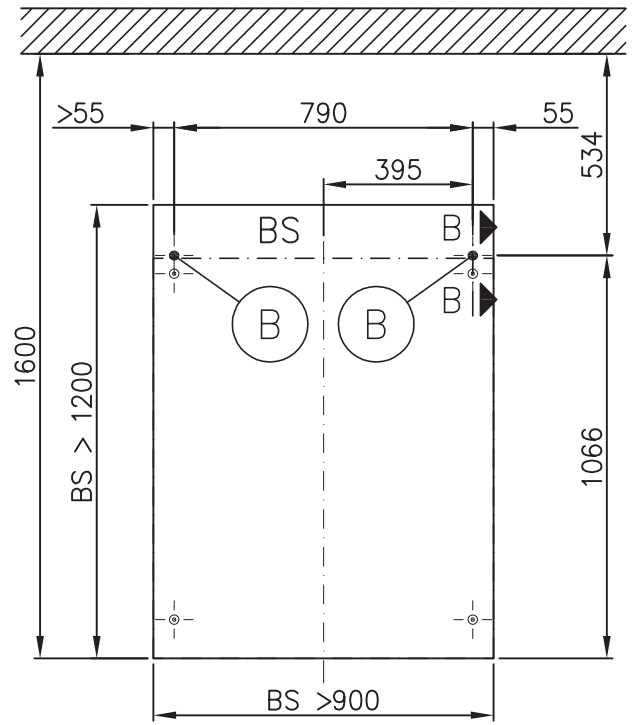
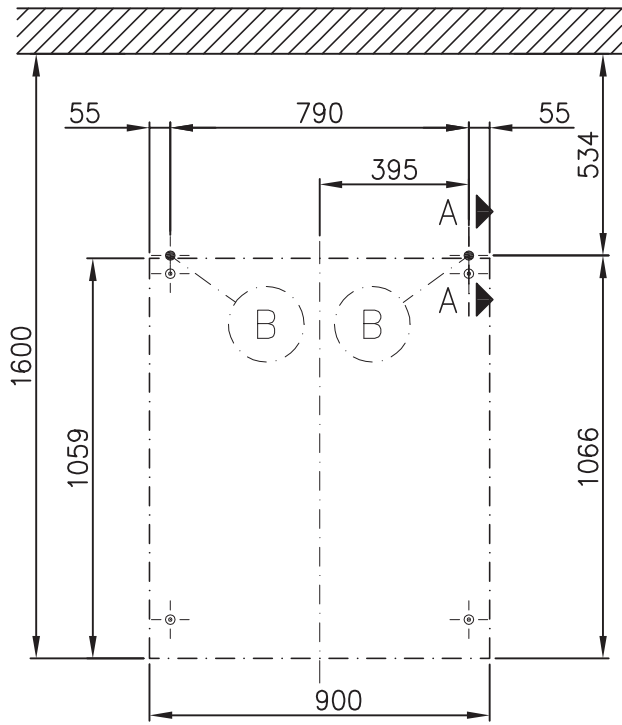
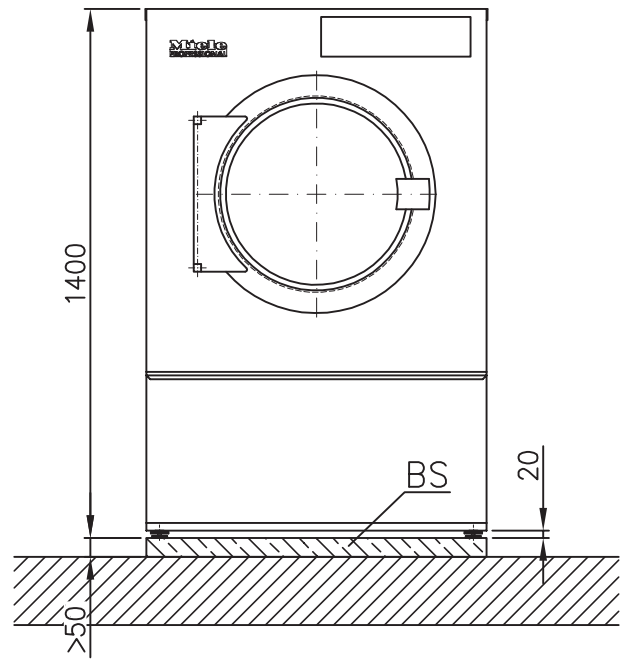
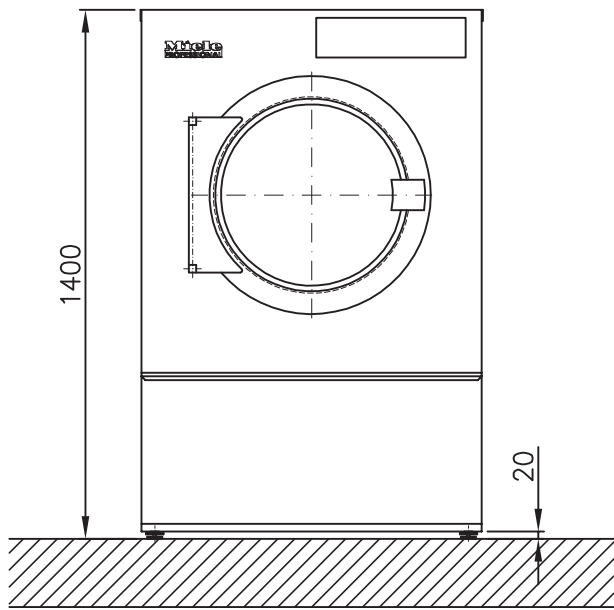
"Z"



"Y"







Technical datasheet



Tumble dryer:
Heating:

PT 8407
Steam (D)

Legend:



Abbreviations in bold type:
Connection required



Abbreviations in circle with dashes:
Connection optional or required depending on model version

en - US

Optional extras:

BS	Concrete base	Quality and density of concrete must comply with load. Concrete base must be firmly secured to floor! Recommended height Minimum height Minimum width Minimum depth	3 15/16" 1 31/32" 35 7/16" 47 1/4"	100 mm 50 mm 900 mm 1200 mm
DAV	Steam connection valve	The steam connection valve to regulate the steam supply must be provided on site. The following valves can be ordered separately as electric steam valves or as pneumatic steam valves. Pneumatic steam valve (PND) Regulatable steam pressure Connection gauge Supply point and pneumatic valve controls must be provided on site.	0 - 145 psi 1/2"	0 - 1000 kPa

Machine connections:

(EL)	Electrical connection	Standard voltage Frequency Rated load Fuse rating Connection cable, min. cross-section Connection cable to be ordered separately	3 AC 208V 60 Hz 4438.8 BTU/h 3 x 10 A 4 x AWG 16	1.3 kW 4 x 1.5 mm ²
		Alternative voltage Frequency Rated load Fuse rating Connection cable, min. cross-section Connection cable to be ordered separately	3 AC 220-240V 60 Hz 4439 BTU/h 3 x 10 A 4 x AWG 16	1.3 kW 4 x 1.5 mm ²
		Electrical connection must comply with national regulations. Connection using multi-pole wall socket in compliance with IEC/EN 60309 and IEC/EN 60947 is recommended in order to simplify electrical tests. If machines are hard-wired, a multi-pole switch must be provided on site. A wall socket or isolator must be accessible after installation.		

<p>(PA)</p>	<p>Equipotential bonding</p>	<p>Connection with male thread Connection with washers and nut Accessories to be ordered separately If necessary, equipotential bonding with good galvanic contact must be provided in accordance with all appropriate national and local regulations.</p>	<p>3/8" x 1 3/8" 3/8"</p>	<p>10 mm x 35 mm M 10</p>
<p>(D)</p>	<p>Steam connection</p>	<p>Steam pressure Boiling point Steam supply capacity Connection thread (on site) Steam valve, steam filter and steam faucet must be provided on site. Supply lead Steam valve Length The supply lead for the electric steam valve is included. The steam valve should be installed close to the steam connection. Note installation instructions for steam-heated Miele tumble dryers.</p>	<p>87 - 145 psi 329 - 363 °F 108 lbs/h ½" internal thread 19 11/16"</p>	<p>600 - 1.000 kPa 165 - 184 °C 49 kg/h 500 mm</p>
<p>(K)</p>	<p>Condensate connection</p>	<p>Connection thread (on site) Steam valve, steam filter and steam faucet must be provided on-site. Installation of the steam trap needs to allow complete drainage of the heater element during machine downtime. This means, no condensate is left in the heater element. Installation of an inverted bucket steam trap is recommended.</p>	<p>½" internal thread</p>	
<p>(AL)</p>	<p>Vented</p>	<p>Max. nominal air flow in vented mode Max. permissible pressure loss Connection on machine side (ext. diameter) Connection pipe provided on site (int. diameter) Max. temperature As relative humidity inside the vent ducting can be as high as 100%, suitable measures must be taken to prevent a backflow of condensate into the machine.</p>	<p>26486 cfm 0.04 psi 5 29/32" 5 29/32" 176 °F</p>	<p>750 m³/h 300 Pa 150 mm 150 mm 80 °C</p>
<p>(ZL)</p>	<p>Air intake</p>	<p>Standard connection: Air intake from installation site Unobstructed air intake into room recommended (corresponding to 3 times the vent cross-section of machine) A sufficient supply of fresh air should be ensured to replace the air extracted. Alternative connection: Ducted air intake (from outside building) Connector on machine (int. diameter) Connection pipe provided on site (ext. diameter) Lid removal exposes live components! For safety reasons, the pipe connected for central air intake should be at least 35 7/16" [900 mm] long and secured using two screws.</p>	<p>82.31 in² 6 11/32" 6 5/16"</p>	<p>531 cm² 161 mm 160 mm</p>

B	Fittings (supplied)	Without base: 2 x clamps 2 x screws DIN 571 (Ø x length) 2 x rawl plugs (Ø x length) Machine must be bolted to the floor! Fixing materials for floor screed have to be provided on site.	1/4" x 1 9/16" 3/8" x 1 31/32"	6 mm x 40 mm 10 mm x 50 mm
		On concrete platform: 2 x clamps 2 x screws DIN 571 (Ø x length) 2 x rawl plugs (Ø x length) Machine must be bolted to the floor! Fixing materials for floor screed have to be provided on site.	1/4" x 1 9/16" 3/8" x 1 31/32"	6 mm x 40 mm 10 mm x 50 mm
	Machine data	Width Depth Height Casing width Casing depth Minimum width of delivery access to installation site Recommended rear wall gap (measured to front of machine) Min. wall gap (to rear edge of lid) Net weight Dynamic floor load, max. Average heat dissipation (depends on ambient room temperature and selected program) A Noise level A Sound pressure level (measured at a distance of 39 3/8" [1 m] from the machine and at a height of 63" [1.6 m])	35 21/32" 45 27/32" 55 1/8" 35 7/16" 41 11/16" 36 7/32" 63" 19 11/16" 476.2 lbs 2413 N 2508 BTU/h 72.8 dB (A) 60 dB (A)	906 mm 1164 mm 1400 mm 900 mm 1059 mm 920 mm 1600 mm 500 mm 216 kg 735 W

Installation should only be carried out by authorized installers in accordance with all local and national regulations. Follow installation instructions when installing machine! All rights reserved.