

## Before the first use

⚠ Damage resulting from incorrect installation and connection. Installing and connecting the washing machine incorrectly will cause serious damage to property. See "Installation".

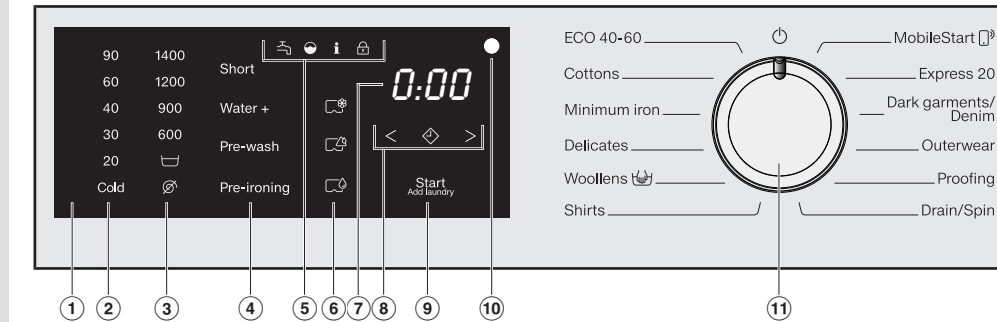
⚠ Damage resulting from failure to remove the transit bars. Failure to remove the transit bars can result in damage to the washing machine and to adjacent cabinetry or appliances. Remove the transit bars as described in "Installation".

The setting up procedure for the washing machine occurs in 3 steps.

1. Removing the transit bars
2. Setting up Miele@home
3. Starting a programme to calibrate the appliance

For further information, please refer to the separate operating instructions.

## Operating the washing machine



- 1 **Control panel**
- 2 **Temperature sensors** for selecting the temperature
- 3 **Spin speed sensors** for selecting the spin speed
- 4 **Extras sensors**  
You can supplement wash programmes with Extras. If a wash programme has been selected, the sensor controls for the possible Extras light up dimly.
- 5 **Indicator lights**
  - Water inlet or drainage faults
  - Excess detergent used
  - Reminder about hygiene information
  - The Add laundry function cannot be selected
- 6 **CapDosing sensors**
  - Fabric care (e.g. fabric softener)
  - Additives (e.g. detergent enhancers)
  - Detergent (for the main wash only)
- 7 **Time display**  
After the programme has started, the programme duration will be shown in the display in hours and minutes.
- 8 **< > sensors** for the Delay start function

### Washing environmentally and economically

- Programmes that are more efficient with regard to energy and water consumption generally have a longer running time. By extending the programme running time, the wash temperature that is actually reached can be reduced while still providing the same wash results.

### Operating the sensors

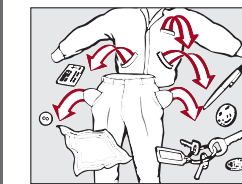
The sensors react to fingertip contact. Selection is possible as long as the respective sensor is illuminated. If a sensor is brightly lit, this means: currently selected. If a sensor is dimly lit, this means: selection possible.

- 9 **Start/Add laundry sensor**
  - A Touching the *Start/Add laundry* sensor starts the selected programme. The sensor lights up constantly.
  - B Once the programme has been started, the *Start/Add laundry* sensor allows you to add laundry.
- 10 **Optical interface**  
For service technicians.
- 11 **Programme selector** for selecting programmes and for switching the washing machine off. The washing machine is switched on by selecting a programme, and switched off by turning the programme selector to the 0 position.

- For example, the *ECO 40-60* programme has a longer running time than *Cottons 40°C* or *60°C*, but the *ECO 40-60* programme is more efficient in terms of energy and water consumption.
- To get the most out of your machine, load the maximum dry load for the programme you are using.
- Use the *Express 20* programme for small, lightly soiled loads.

## Washing

### 1. Preparing the laundry

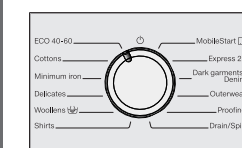


- Empty all pockets.
- ⚠ Damage due to foreign objects. Nails, coins, paper clips, and so on can cause damage to garments and components in the machine. Check the laundry before washing and remove any foreign objects.

- Sort the laundry by colour and by care label. Most garments have a textile care label in the collar or side seam.
- Pre-treat stains and badly soiled areas (Please refer to the Miele website or Miele App for more information on stain removal).

### 2. Selecting a programme

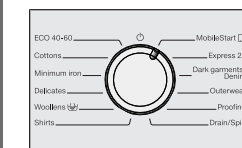
#### 1. Selecting wash programmes using the programme selector



- Turn the programme selector to the required programme. The programme running time appears in the time display.

#### 2. Selecting programmes using the MobileStart [M] programme selector position and Miele App

To use *MobileStart* [M], the washing machine must be signed on to the Wi-Fi network and Remote control must be switched on.

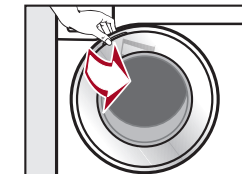


- Turn the programme selector to the *MobileStart* [M] programme selector position. *Con* appears in the time display.

Once the programme has started, the washing machine can be operated with the Miele App.

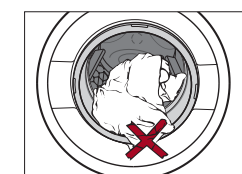
### 3. Loading the washing machine

#### Opening the door

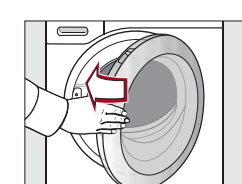


- Take hold of the door and pull it open.
- Unfold the laundry and load loosely in the drum.

#### Closing the door



- Make sure that no items are caught between the door and the seal.



- Shut the door with a gentle swing.

### 4. Selecting programme settings

#### Selecting the temperature and spin speed

The wash programme's preset temperature and spin speed light up brightly. The choice of temperatures and spin speeds selectable for the wash programme light up dimly.

- Touch the sensor for the temperature you want. It will light up brightly.
- Touch the sensor for the spin speed you want. It will light up brightly.

#### Selecting Extras

The selection of Extras available for the wash programme lights up dimly.

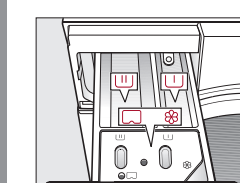
- Touch the sensor for the Extra you want. It then lights up brightly.

**Useful tip:** You can select multiple Extras for a wash programme.

### 5. Adding detergent

There are several options for adding detergent.

#### Detergent dispenser drawer



- Pull out the detergent dispenser drawer and add detergent to the compartments.

- U Detergent for the pre-wash
- U Detergent for the main wash
- ⊗ / Fabric softener, liquid starch or capsules

#### CapDosing

Three different types of capsules are available:

- ⊗ Fabric care (e.g. fabric softener)
- ⊗ Additives (e.g. detergent enhancers)
- ⊗ Detergent

See "Detergent" in the operating instructions for more information on detergents, capsules and dosage.

### 6. Starting the programme



- Touch the flashing *Start/Add laundry* sensor.

The door will lock and the programme will start.

#### Adding or removing laundry during a programme sequence (AddLoad)

Laundry can be added or removed at any time, provided that the *Con* symbol is not lit up on the control panel.

- Touch the *Start/Add laundry* sensor.

The display shows rotating bars *U... U... U... U...*

When the word *Add* appears in the display, the door can be opened.

- Open the door and add or remove laundry.
- Close the door.
- Touch the *Start/Add laundry* sensor.

The wash programme will continue.

## End of the programme

### Changing the programme (safety lock)

It is not possible to change the programme, the temperature, the spin speed or the selected Extras after the programme has started. This prevents the appliance being operated unintentionally, e.g. by children.

#### cancelling a programme

You can cancel a programme at any time after it has started.

- Turn the programme selector to the 0 position.
- Turn the programme selector to any position.

The display shows rotating bars *U... U... U... U...* or *-U-*. The water is pumped away and the door lock is released.

#### Selecting a new programme

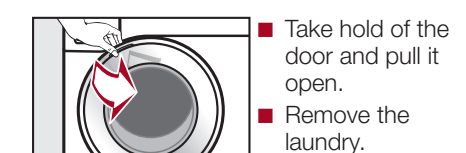
- Turn the programme selector to the required programme.
- Check that there is still detergent in the dispenser drawer. Add more detergent if necessary.
- Touch the *Start/Add laundry* sensor.

### 7. At the end of the programme

The door is locked in the Anti-crease phase.

- Turn the programme selector to the 0 position.
- U-* appears in the display and the *Con* indicator light goes out. The door will unlock.

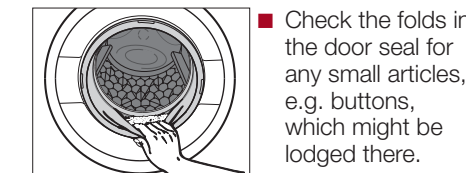
**Useful tip:** After the Anti-crease phase, the door will unlock automatically.



- Take hold of the door and pull it open.
- Remove the laundry.

Items left in the drum could discolour other items in the next wash or become discoloured themselves.

Check that all items have been removed from the drum.



- Check the folds in the door seal for any small articles, e.g. buttons, which might be lodged there.

**Useful tip:** For safety reasons, close the door.

- Remove any used capsules from the detergent dispenser drawer.

**Useful tip:** Leave the detergent dispenser drawer slightly open to allow it to dry.

## Delay start/Extras

### Delay start/SmartStart

You can delay the start of a programme from 30 minutes up to a maximum of 24 hours. This allows you to make use of night-time economy electricity rates, for example.

#### Selecting Delay start

- Select the programme required.



- Touch the *Con* sensor.

- Touch the < or > sensor repeatedly until the required Delay start time appears in the time display.

- For less than 10 hours, the Delay start time changes in increments of 30 minutes.

- For more than 10 hours, the Delay start time changes in increments of 1 hour.

- Touch the flashing *Start/Add laundry* sensor.

The Delay start process starts and counts down in the time display.

#### SmartStart - setting time period

If the *P38* SmartGrid programmable function is activated, the function of the *Con* sensor changes. The time display no longer shows the Delay start period, and instead shows the time period in which your washing machine can be started automatically. The procedure for setting this is the same as for the Delay start time. For further information, please refer to the separate operating instructions.

### Extras

You can select or deselect Extras by touching the corresponding sensor on the control panel.

#### Short

For light soiling with no visible staining. The wash duration is reduced.

#### Water +

The water level in the main wash and the rinses will be increased.

You can programme other options for the *Water + Extra*. These are described in "Programmable functions" in the operating instructions.

#### Pre-wash

For laundry with large amounts of dirt, e.g. dust and sand.

#### Pre-ironing

In order to reduce creasing, the laundry undergoes a smoothing process at the end of the programme. For optimal smoothing, reduce the maximum load by 50%. Follow the instructions in the display. Small loads achieve a better result. The garments must be suitable for drying in a tumble dryer and suitable for ironing .

## Programme chart

Programme	Load (in kg)	Temperature	Items	Extra
ECO 40-60 <sup>1</sup>	9.0		For normally soiled cotton garments. A laundry load consisting of mixed cottons that are intended for washing at 40°C or 60°C can be washed in the same wash cycle. This programme is the most efficient in terms of energy and water consumption for washing cottons.	
Cottons	9.0	Cold to 90°C	Cottons, linens or cotton mix fabrics, e.g. table linen, towelling, underwear, T-shirts etc.	(A), (B), (C), (D)
Minimum iron	4.0	Cold to 60°C	Synthetic and mixed fibre textiles and easy care cotton.	(A), (B), (C), (D)
Delicates	3.0	Cold to 40°C	Delicate garments made from synthetic fibre, mixed fibre, rayon and viscose. Performance outerwear (e.g. jackets and trousers) made from membrane fabric such as Gore-Tex®, SYMPATEX®, WINDSTOPPER®, etc. Curtains specified as machine-washable by the manufacturer.	(A), (B), (C), (D)
Woolens (W)	2.0	Cold to 40°C	Machine-washable or hand-washable wool or wool blend fabric. If the care label does not specify a temperature, wash using the cold setting.	(A), (B), (C), (D)
Shirts	1.0/2.0	Cold to 60°C	Shirts and blouses made of cotton and mixed fibre. Wash silk shirts and blouses in the Delicates programme. If the preset Pre-ironing option is switched off, the maximum load capacity is increased to 2.0 kg.	(A), (B), (C), (D)
MobileStart (M)			The Miele App is used for selecting programmes and operating the machine.	(A)
Express 20	3.5	Cold to 40°C	Cotton garments that have hardly been worn or are only very lightly soiled.	(A), (B), (C), (D)
Dark garments/Denim	3.0	Cold to 60°C	Black and dark garments made from cotton, mixed fibres and denim.	(A), (B), (C), (D)
Outerwear	2.5	Cold to 40°C	Performance outerwear (e.g. jackets and trousers) made from membrane fabric such as Gore-Tex®, SYMPATEX®, WINDSTOPPER®, etc.	(A), (B), (C)
Proofing	2.5	40°C	For treating microfibre fabric, skiwear and table linen made from mainly synthetic fibres to provide a water and dirt resistant finish.	
Drain/Spin	-	-	Drain only: Select (S) for the spin speed.	

(A) = Short; (B) = Water +; (C) = Pre-wash; (D) = Pre-ironing

◀ fold here

## Detergent

	Miele detergents		Miele capsules		
	UltraWhite	UltraColor	(W)	(S)	(S)
ECO 40-60	✓	✓	-	✓	✓
Cottons	✓	✓	-	✓	✓
Minimum iron	-	✓	-	✓	✓
Delicates	-	✓	✓	✓	-
Woolens (W)	-	-	✓	-	-
Shirts	✓	✓	-	✓	✓
Express 20	-	✓	-	✓	-
Dark garments/Denim	-	✓	✓	✓	-
Outerwear	-	-	✓	-	-
Drain/Spin	-	-	-	-	-

✓ Recommended  
 - Not recommended

(W) Specialist detergents (e.g. WoolCare)  
 (S) Fabric care (e.g. fabric softener)  
 (S) Additive (e.g. booster)

PROGRAMME CHART

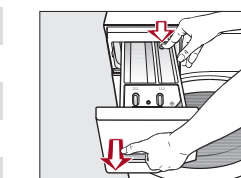
◀ fold here

## Cleaning and care

### Cleaning the detergent dispenser drawer

Washing at low temperatures and the use of liquid detergent can lead to a build-up of mould and bacteria in the detergent dispenser drawer.

- For hygiene reasons, clean the entire drawer at regular intervals.

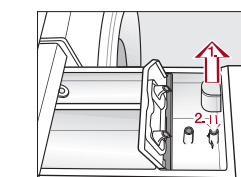


- Pull out the detergent dispenser drawer until a resistance is felt.

- Press down the release button and, at the same time, pull the drawer right out of the machine.

- Clean the detergent drawer with warm water.

### Cleaning the siphon tube and the fabric softener channel



- Pull the siphon out of the compartment and clean it under warm running water.

- Clean the siphon tube in the same way.
- Refit the siphon.



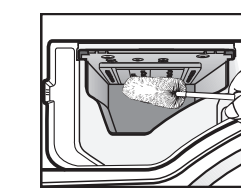
- Clean the fabric softener channel using a brush and warm water.

Liquid starch results in clogging. If clogged, the siphon in the (S)/(S) compartment will not work and the compartment can overflow.

Clean the siphon particularly thoroughly after using liquid starch a few times.

◀ fold here

### Cleaning the detergent dispenser drawer housing



- Use a bottle brush to remove detergent residues and limescale from the jets inside the detergent dispenser drawer housing.

- Replace the detergent dispenser drawer slightly open to allow it to dry.

### Cleaning the drum (Hygiene info)

Washing at low temperatures and/or using liquid detergent can cause bacteria and unpleasant odours to build up in the washing machine. Use the *Cottons* 90°C programme to clean the washing machine. Clean the drum no later than the point at which the **i** indicator light and **!** light up in the time display.

CLEANING AND CARE

◀ fold here

## Problem solving guide

With the help of the following guide, minor faults in the performance of the appliance, some of which may result from incorrect operation, can be remedied without contacting Miele. This will save you time and money because you won't need a service call.

Problem	Possible cause and remedy
<b>The control panel remains dark.</b>	<ul style="list-style-type: none"> <li>There is no power to the machine.</li> <li>Check whether the mains plug is plugged in and switched on.</li> <li>Check whether the circuit breaker has tripped.</li> </ul> <p>The washing machine has switched off automatically to save energy.</p> <ul style="list-style-type: none"> <li>Switch the washing machine back on by turning the programme selector.</li> </ul>
<b>F and 34 alternate in the time display.</b>	<p>The door is not closed properly. The door lock could not engage.</p> <ul style="list-style-type: none"> <li>Close the door again.</li> <li>Start the programme again.</li> </ul> <p>If the fault message appears again, contact Miele.</p>
<b>The fault indicator light (S) lights up. F and ! alternate in the time display and the buzzer sounds.</b>	<p>The water outlet is blocked or restricted. The drain hose has been fixed too high.</p> <ul style="list-style-type: none"> <li>Clean the filter and the drain pump (see the operating instructions).</li> <li>The maximum drain height is 1 m.</li> </ul>
<b>The fault indicator light (S) lights up. F and ! alternate in the time display and the buzzer sounds.</b>	<p>The water inlet is blocked or restricted.</p> <ul style="list-style-type: none"> <li>Check whether the tap is turned on properly.</li> <li>Check whether the inlet hose is kinked.</li> <li>Check whether there is sufficient water pressure.</li> </ul>
<b>The fault indicator light (S) lights up. F and ! alternate in the time display and the buzzer sounds.</b>	<p>The filter in the water inlet is blocked.</p> <ul style="list-style-type: none"> <li>Clean the filter (see the operating instructions).</li> </ul>
<b>The fault indicator light (S) lights up. F and ! alternate in the time display and the buzzer sounds.</b>	<p>The water protection system has reacted.</p> <ul style="list-style-type: none"> <li>Turn off the tap.</li> <li>Call Miele.</li> </ul>
<b>F and XXX alternate in the time display and the buzzer sounds.</b>	<p>There is a fault.</p> <ul style="list-style-type: none"> <li>Disconnect the washing machine from the electricity supply, either by switching it off at the wall socket and withdrawing the plug, or by disconnecting it at the circuit breaker.</li> <li>Wait <b>at least 2 minutes</b> before reconnecting the washing machine to the electricity supply.</li> <li>Then switch the washing machine back on.</li> <li>Restart the programme.</li> </ul> <p>If the fault message appears again, contact Miele.</p>

Problem	Possible cause and remedy
<b>-0- lights up in the time display.</b>	<p>The programme selector was moved to a different position after the programme had started.</p> <ul style="list-style-type: none"> <li>Turn the programme selector back to the original position.</li> </ul>
<b>The indicator light (S) lights up.</b>	<p>Excessive foam has built up during washing.</p> <ul style="list-style-type: none"> <li>Use less detergent next time and follow the manufacturer's instructions on dosage given on the packaging.</li> </ul>
<b>The i indicator light lights up and ! appears in the time display.</b>	<p>A programme using a temperature above 60°C has not been run for a long period of time.</p> <ul style="list-style-type: none"> <li>Run the <i>Cottons</i> 90°C programme using the Miele IntenseClean machine cleaner or a universal powder detergent.</li> </ul> <p>This will clean the washing machine and prevent a build-up of bacteria and odours.</p>
<b>F and 37 appear alternately in the time display.</b>	<p>The <i>Pre-ironing</i> Extra which runs at the end of the programme could not be carried out properly.</p> <ul style="list-style-type: none"> <li>Check that the washing machine is standing level.</li> <li>Check whether the maximum delivery head of 1 m has been exceeded.</li> </ul> <p>If the fault message appears again, contact Miele. The washing machine can still be used, however without the <i>Pre-ironing</i> Extra.</p>
<b>F and 35 alternate in the time display.</b>	<p>The door lock has jammed.</p> <ul style="list-style-type: none"> <li>Call Miele.</li> </ul>
<b>The door cannot be pulled open during a programme.</b>	<p>The drum is locked during a programme.</p> <ul style="list-style-type: none"> <li>Follow the instructions in "6. Starting the programme – Adding or removing laundry during a programme sequence".</li> </ul>

◀ fold here

Miele

## Quick Start Guide

## Washing machine



PROBLEM SOLVING GUIDE

◀ fold here

These short instructions are not a substitute for the operating instructions supplied with the appliance. It is essential to familiarise yourself with the washing machine before using it for the first time. Take note of the Warning and Safety instructions, as well as the full descriptions on how to use your appliance.

en-AU, NZ

M.-Nr. 12 145 870 / 00