

Miele

Installation plan

Vented dryer



PDR 507 EL

It is **essential** to read the operating and installation instructions before installation and commissioning.
This prevents both personal injury and damage to the appliance.

en-AU, NZ

11 716 900/03

Miele Australia Pty. Ltd.

ACN 005 635 398

ABN 96 005 635 398

Melbourne:

Level 4, 141 Camberwell Road

Hawthorn East, VIC 3123

Telephone: 1300 731 411

service.prof@miele.com.au

www.miele.com.au/professional**professional.sales@miele.com.au****Miele New Zealand Limited**

IRD 98 463 631

8 College Hill

Freemans Bay

Auckland 1011

New Zealand

Telephone: 0800 4 MIELE

(0800 464 353)

www.miele.com.au/professionalprofessional.sales@miele.com.au

Miele Global Headquarters: Miele & Cie. KG

Carl-Miele-Straße 29, 33332 Gütersloh, Germany

Key:

Connection required

Connection optional or required,
depending on model

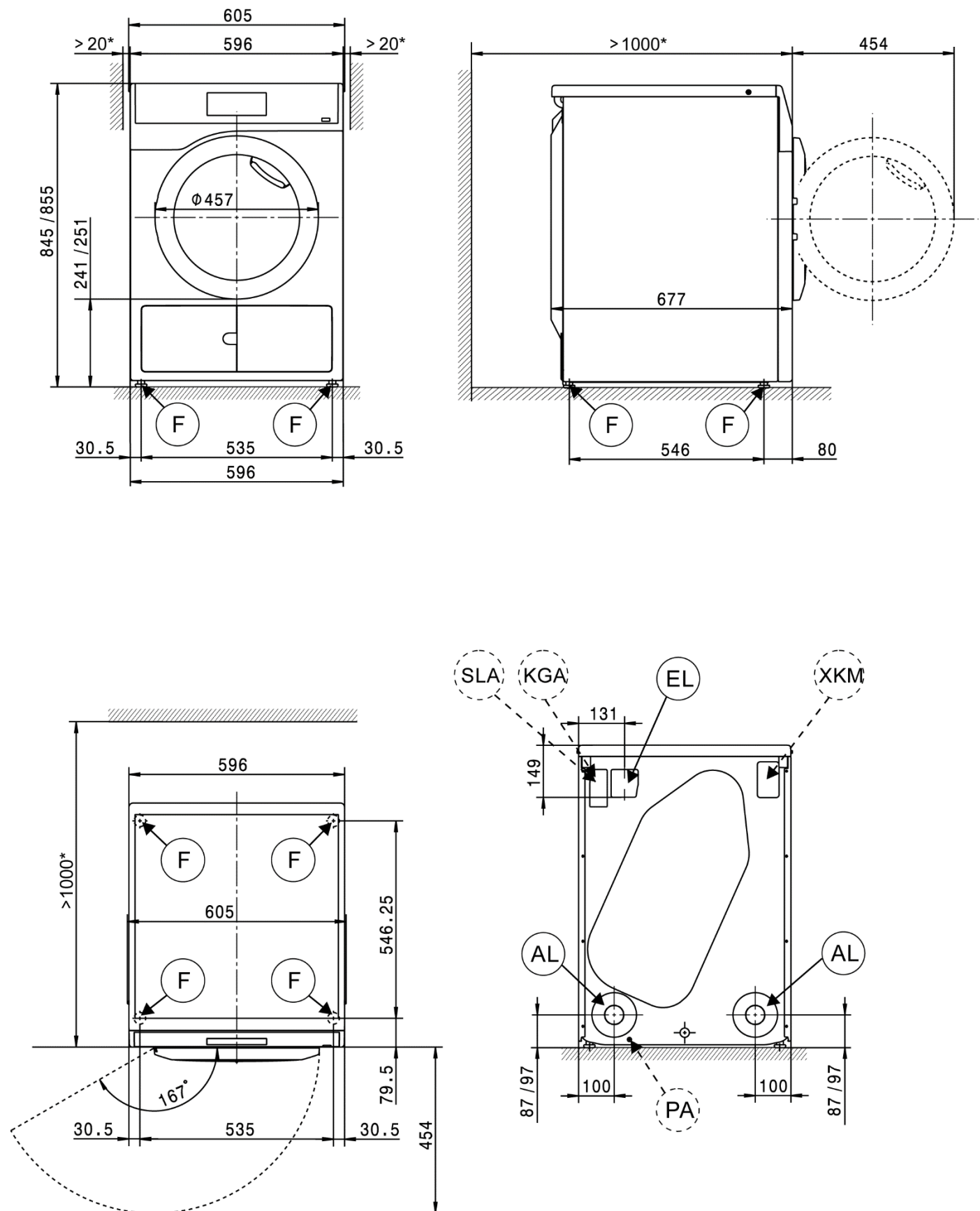
| | |
|-----|----------------------------|
| AL | Exhaust air |
| ASK | Condensate drain hose |
| B | Appliance anchoring |
| EL | Electrical connection |
| F | Appliance feet, adjustable |
| KG | Payment system |
| KGA | Payment system connection |
| KLA | Cooling air vent |

| | |
|----------|---------------------------|
| KLZ | Cooling air intake |
| PA | Equipotential bonding |
| SLA | Peak-load connection |
| APCL SST | Box plinth |
| APCL OB | Open plinth |
| APCL 001 | Washer-dryer stacking kit |
| XKM | Communication module |
| ZL | Air intake |

Technical changes and errors excepted.

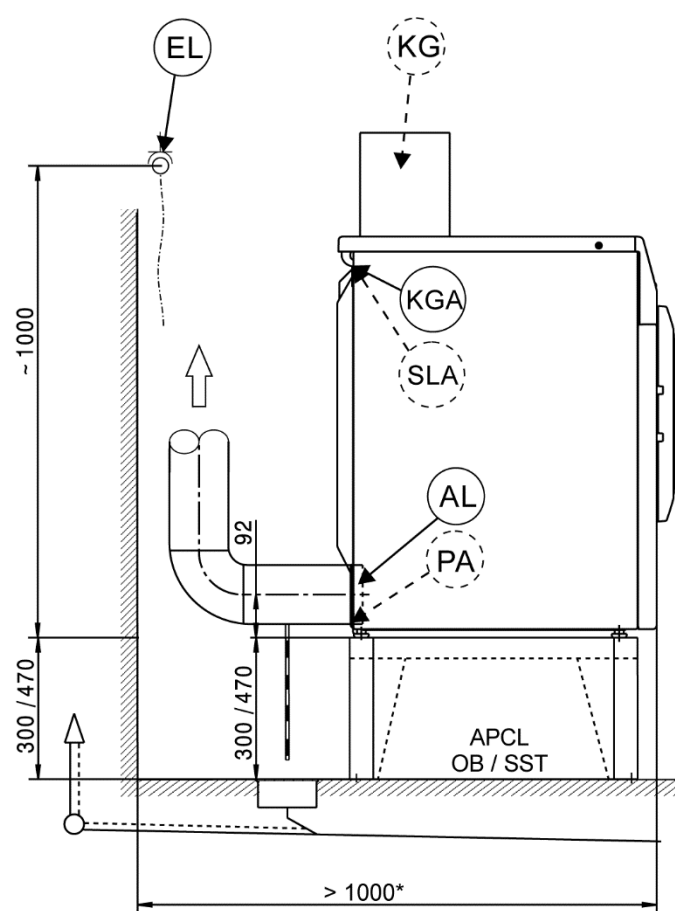
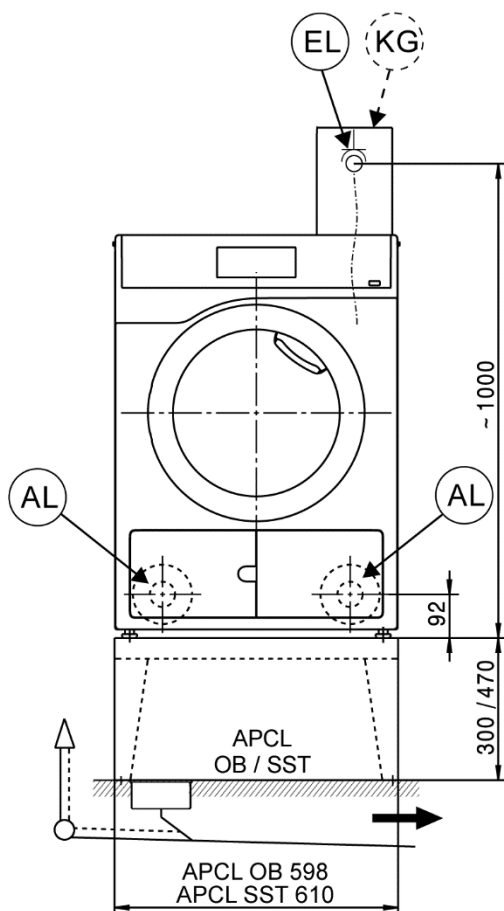
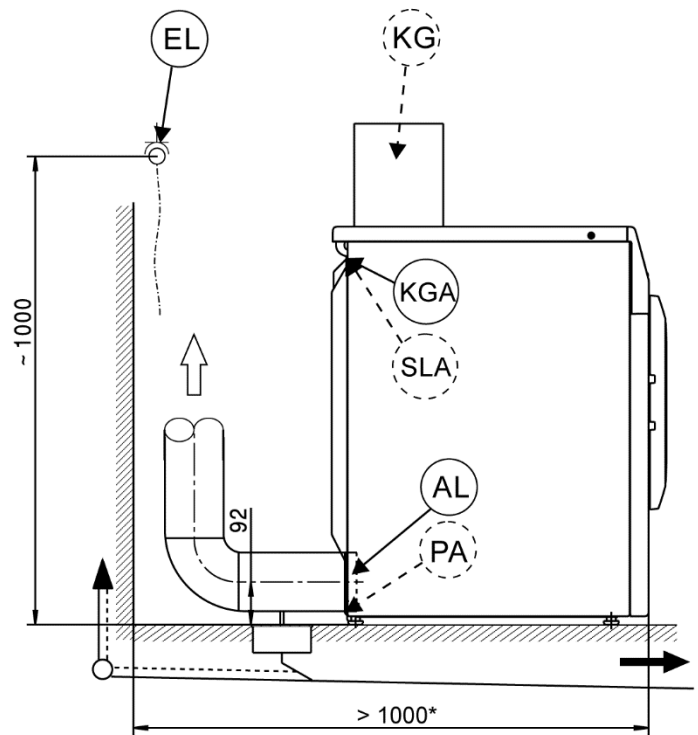
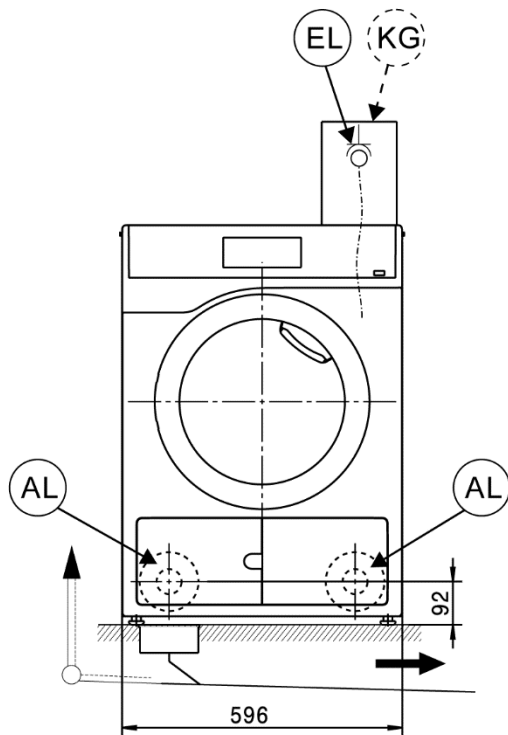
Appliance dimensions

* The wall spacers are recommended for making service work easier. The machine may be pushed against the wall if installation conditions mean there is limited space.



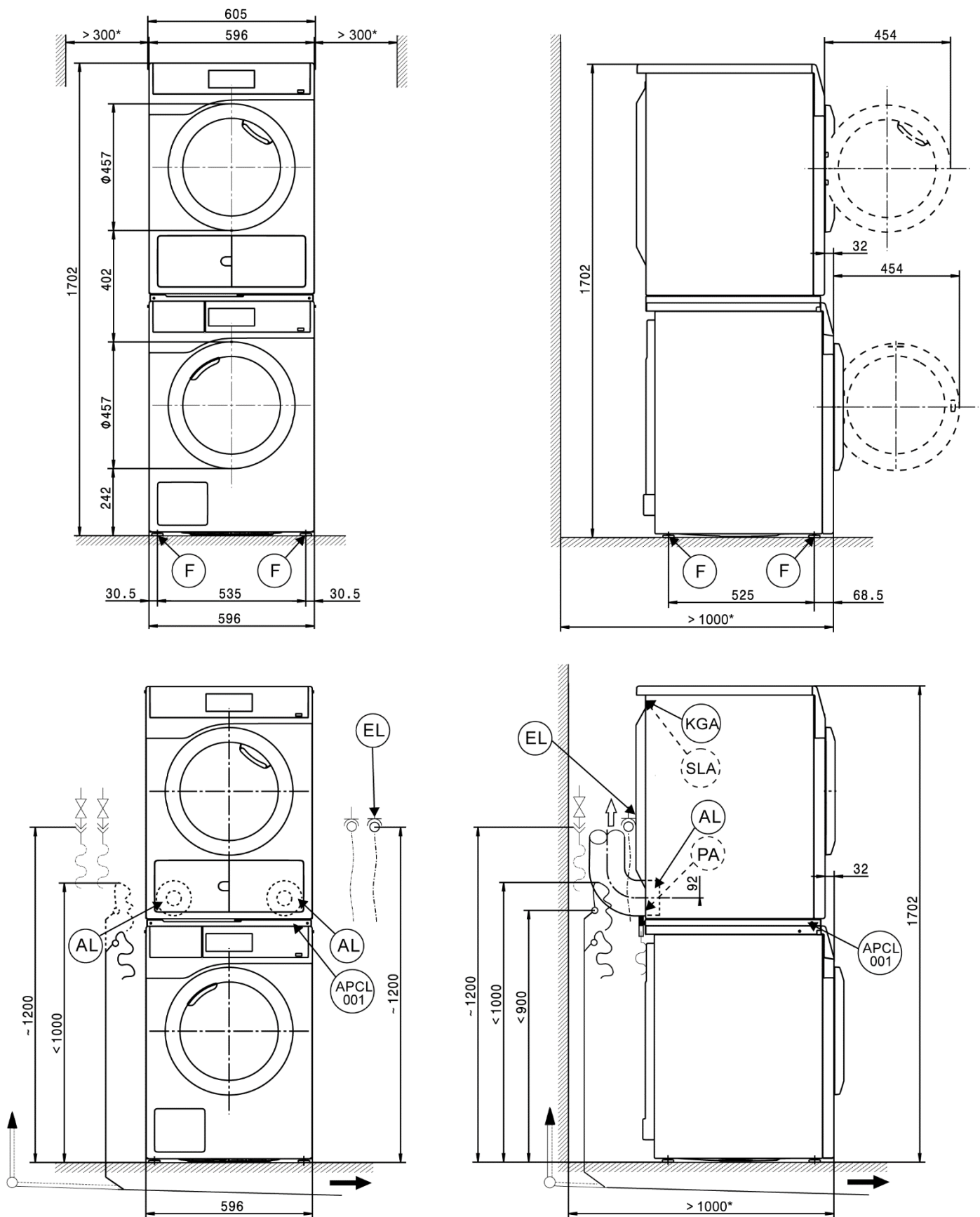
Installation

* The wall spacers are recommended for making service work easier. The machine may be pushed against the wall if installation conditions mean there is limited space.



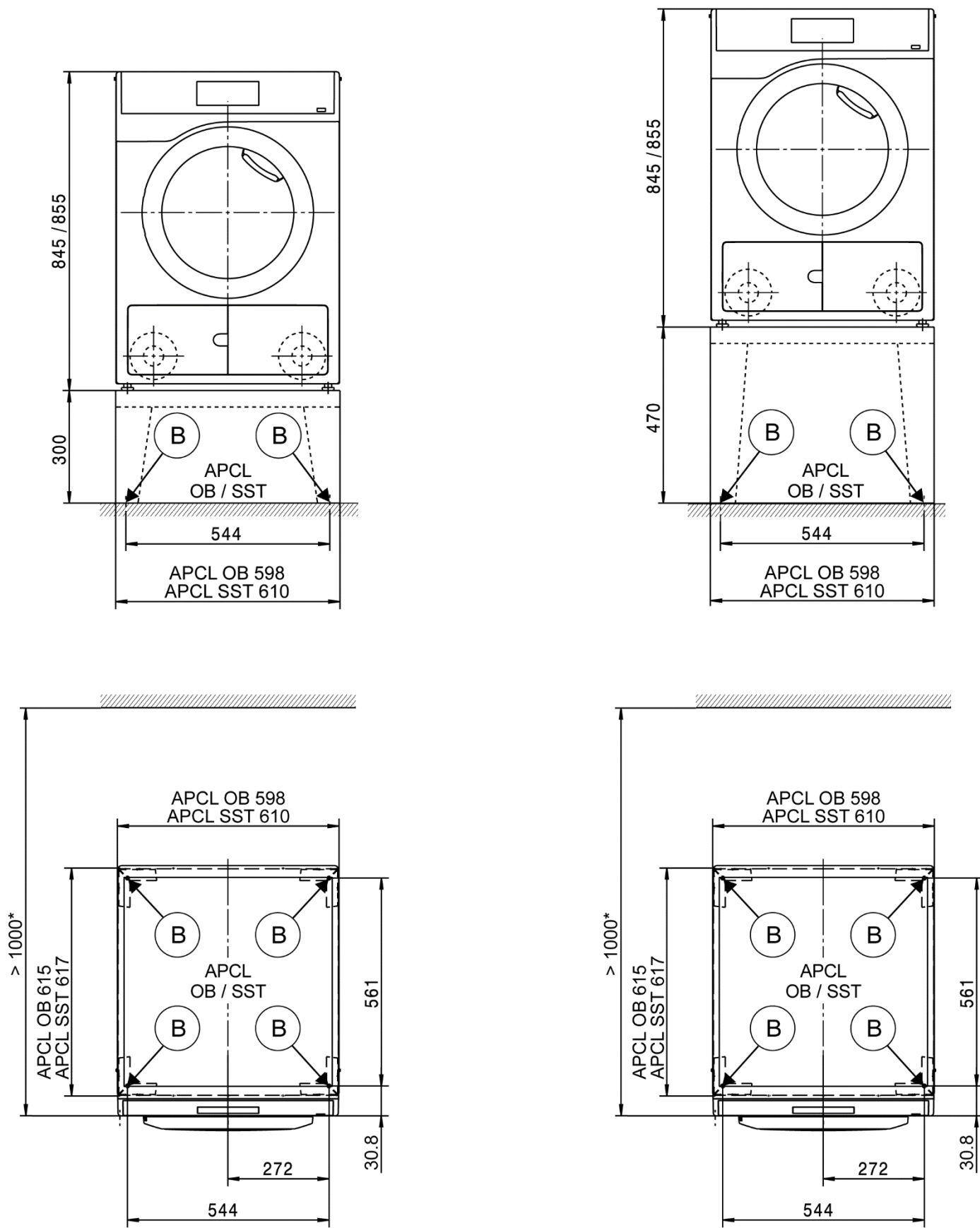
Washer-dryer stack

* The wall spacers are recommended for making service work easier. The machine may be pushed against the wall if installation conditions mean there is limited space.



Installation

* The wall spacers are recommended for making service work easier. The machine may be pushed against the wall if installation conditions mean there is limited space.



Technical data

| PDR 507 EL | | |
|-----------------------|----|--------|
| Drying system | | Vented |
| Drum volume | l | 130 |
| Load capacity | kg | 7.0 |
| Door opening diameter | mm | 370 |

Electrical connection (EL)

| Standard voltage | | | 3N AC 400 V |
|---|-----------------|--|-------------|
| Frequency | Hz | | 50/60 |
| Total rated load | kW | | 6.4 |
| Fuse rating (B trip rating according to EN 60898) | A | | 3 x 10 |
| Supply lead min. cross-section | mm ² | | 5 x 1.5 |
| Supply lead without plug | | | ● |
| Length of supply lead | mm | | 2000 |

| Alternativ voltage (convertible by Miele Customer Service Department) | | | 1N AC 230 V |
|---|-----------------|--|-------------|
| Frequency | Hz | | 50/60 |
| Total rated load | kW | | 3.24 |
| Fuse rating (B trip rating according to EN 60898) | A | | 1 x 16 |
| Supply lead min. cross-section | mm ² | | 3 x 1.5 |

| Alternativ voltage (convertible by Miele Customer Service Department) | | | 3 AC 230 V |
|---|-----------------|--|------------|
| Frequency | Hz | | 50/60 |
| Total rated load | kW | | 6.4 |
| Fuse rating (B trip rating according to EN 60898) | A | | 3 x 16 |
| Supply lead min. cross-section | mm ² | | 4 x 1.5 |

| Standard voltage (AU, NZ only) | | | 1N AC 230 V |
|---|-----------------|--|-------------|
| Frequency | Hz | | 50/60 |
| Total rated load | kW | | 5.47 |
| Fuse rating (B trip rating according to EN 60898) | A | | 1 x 25 |
| Supply lead min. cross-section | mm ² | | 3 x 2.5 |
| Supply lead without plug | | | ● |
| Length of supply lead | mm | | 2000 |

Vented (EL)

| | | |
|------------------------------|----|-----|
| Connection (ext. diameter) | mm | 100 |
| Max. exhaust air temperature | °C | 80 |

Electrical connection with 50 Hz/60 Hz

| | | |
|--|-------------------|-----|
| Max. permissible pressure loss | Pa | 340 |
| Max. flow rate w/o counterpressure (0 Pa) in vented mode | m ³ /h | 285 |

Equipotential bonding (PA)

| | |
|--|---|
| Appliance connection (with installation kit) | ○ |
|--|---|

XCI-Box / XCI-AD interface

| | |
|--|---|
| | ● |
|--|---|

Peak load/energy management (SLA)

| | |
|-------------------------------------|---|
| Appliance connection (with XCI-Box) | ○ |
|-------------------------------------|---|

Payment system connection (KGA)

| | |
|---|---|
| Connection of payment systems (with XCI-Box / XCI-AD) | ○ |
|---|---|

Communication module (XKM)

| | |
|--------------------------------------|---|
| Communication module XKM 3200 WL PLT | ○ |
|--------------------------------------|---|

Installation on appliance feet (F)

| | | |
|---|-----|------|
| No. of appliance feet | No. | 4 |
| Appliance foot, height-adjustable with thread | mm | ± 5 |
| Appliance foot diameter | mm | 31.7 |

● = standard, ○ = optional, + = only on request, - not available

PDR 507 EL

Anchoring of Miele plinths

| | | |
|--|-----|---------|
| Miele plinth installation (fasteners included) | | 0 |
| Required anchor points | No. | 4 |
| Wood screws according to DIN 571 | mm | 8 x 65 |
| Rawl plugs (diameter x length) | mm | 12 x 60 |

| | | |
|--|----|---------|
| Appliance installation on on-site plinth (concrete or masonry) | | Ø |
| Min. plinth installation footprint (W/D) | mm | 600/650 |
| Wood screws according to DIN 571 | mm | 6 x 50 |
| Rawl plugs (diameter x length) | mm | 8 x 40 |

| | | |
|--------------------------------------|----|-------------|
| Overall appliance dimensions (H/W/D) | mm | 850/605/717 |
| Casing dimensions (H/W/D) | mm | 850/596/677 |

| | | |
|--|----|---------|
| Min. site-access opening (excl. packaging) | mm | 900/605 |
|--|----|---------|

| | | |
|--|----|------|
| Side gap | mm | 20 |
| Recommended side gap – washer-dryer stack | mm | 300 |
| Recommended distance to opposite wall from appliance front | mm | 1000 |

| | | |
|-------------------------------|----|-----|
| Appliance weight (net weight) | kg | 50 |
| Max. floor load in operation | N | 670 |

| | | |
|--|-------|-----|
| Sound pressure level (in accordance with EN ISO 11204/11203) | dB(A) | <70 |
| Heat dissipation rate to installation site | W | 200 |

Installation and planning notes

Installation requirements

The tumble dryer should only be connected to a power supply provided in accordance with all appropriate local and national legislation and regulations.

In addition, all regulations issued by the appropriate utilities as well as standards relating to occupational safety and all applicable valid regulations and technical standards must be observed.

General operating conditions

Ambient temperature in installation room: +2 °C to +35 °C.

Electrical connection

Depending on the model, the tumble dryer is delivered with a supply lead with/without a plug.

The appliance may only be connected to an electrical system that conforms to the national and local codes and regulations. The installation must be performed by a qualified electrician.

The data plate indicates the nominal power consumption and the appropriate fuse rating. Compare the specifications on the data plate with those of the electrical power supply.

It is always recommended to connect the appliance via a plug and socket so that electrical safety checks, e.g. during repair or service work, can be carried out easily.

The appliance can either be hard-wired or connected using a plug-and-socket connection. If the appliance is hard-wired, an all-pole disconnection must be provided on site. When switched off there must be an all-pole contact gap of at least 3 mm in the isolator switch (including circuit breakers, fuses and contactors according to AS/NZ 3000 in AU and NZ).

The plug connector or isolator switch should be easily accessible at all times. If the appliance is disconnected from the electricity supply, the isolator must be lockable or the point of disconnection must be monitored at all times.

The tumble dryer should never be connected by an extension cable, e.g. power strips, to avoid the risk of fire.

New connections, modifications to the system or servicing of the earthing conductor, including determining the correct fuse amperage, must be carried out by a qualified electrician, as they are familiar with the pertinent regulations and the specific requirements of the electric utility company.

The appliance must not be connected to devices such as timers which would switch it off automatically.

References to cable cross-sections in the technical data refer only to the required mains cable. Please consult relevant local and national regulations when calculating any other wire gauges.

Vent connection

Hot moist exhaust air should be vented to atmosphere along the shortest possible route or connected to a suitable vent system.

Depending on the duct path, the moist exhaust air can condense on the duct walls to a greater or lesser extent. For this reason it is recommended to lay ducting with a downwards slope to the air exit.

If ducting slopes upwards, a condensate trap either with a drip tray or a connection to a suitable on-site floor drain must be fitted in the system at the lowest point.

Condensate must not flow back into the appliance.

It is permissible to vent exhaust air via an external wall. In this case, measures must be taken to minimise the risk and annoyance to neighbouring buildings.

The end of exhaust air ducting leading into the open should be protected against the elements, e.g. using a suitable hood or with a 90° bend.

The cross-sectional area of the ducting must not be reduced or obstructed by built-in parts. Filters and louvres must not be fitted in the ducting.

Congestion in the line may lead to a drop in appliance performance or to appliances being switched off to guarantee safety.

Proper functioning of the tumble dryer cannot be guaranteed if the max. permissible pressure loss is exceeded in the on-site vent ducting system.

When connecting several tumble dryers to a common duct, the cross-sectional area of the duct must be increased accordingly.

Additionally, in such a case every tumble dryer must have its own non-return valve to prevent dryers affecting others in the system. This requires the provision of on-site additional parts.

In the event that exhaust air ducts from several tumble dryers are merged into a common duct, a non-return device should be installed in each separate line to prevent backflow.

With complex ducting with many bends and additional components, or with the connection of several different tumble dryers to a common duct, it is recommended that a detailed calculation is carried out by a suitable specialist.

Air intake

The air supply for the tumble dryer is taken directly from the installation site.

During operation, adequate ventilation of the installation site should be guaranteed. Depending on the appliance version, it is necessary to ensure an intake of fresh air to compensate for the volume of exhaust air extracted in order to avoid the creation of a vacuum.

It should not be possible to close or otherwise obstruct air intake grilles or alternative measures should be implemented to ensure that an adequate supply of fresh air is available at all times during appliance operation.

Equipotential bonding

If necessary, equipotential bonding with good galvanic contact must be guaranteed in compliance with all applicable local and national installation specifications.

Connection material for equipotential bonding must be provided on site or using a kit available from the Miele Customer Service Department.

Peak load/energy management

The appliance can be connected to a peak-load or energy management system using an optional kit.

When the peak-load function is activated, the heating is deactivated. A message appears in the display to inform you of this.

Payment system

The tumble dryer can be fitted with a single-machine payment system as an optional accessory using an optional kit (XCI-Box / XCI-AD).

The programming required for connecting a payment system can be carried out during the initial commissioning process. After initial commissioning, changes may only be carried out by your Miele dealer or the Miele Customer Service Department.

Interface

The appliance can be fitted with an XKM 3200 WL PLT communication module.

This module can be used as a WiFi or LAN interface.

The LAN interface provided via the module complies with SELV (Safety Extra Low Voltage) in accordance with EN 60950. Connected appliances must also comply with SELV. The LAN connection uses a RJ45 connector in accordance with EIA/TIA 568-B.

Installation and anchoring

The appliance must be installed on a perfectly smooth, level and firm surface which is able to withstand the quoted loads.

The floor load created by the appliance is concentrated and transferred to the installation footprint via the appliance feet.

The appliance should be levelled in both directions with the aid of the adjustable feet.

Plinth installation

The tumble dryer can be installed on a plinth (open or box plinth, available as an optional Miele accessory) or on a concrete plinth to be provided on site.

The quality of the concrete and its strength must be assessed according to the appliance load. Ensure that any raised concrete plinth is adequately bonded to the floor below.

Washer-dryer stack

The tumble dryer can be installed as a washer-dryer stack together with a Miele washing machine. A stacking kit (optional accessory) is required for this.

Installation of the stacking kit must be performed by the Miele Customer Service Department or an authorised Miele service technician.